

RECORD OF SURVEY

LOCATED IN

SECTION 15, T28S, R3W, W.M.

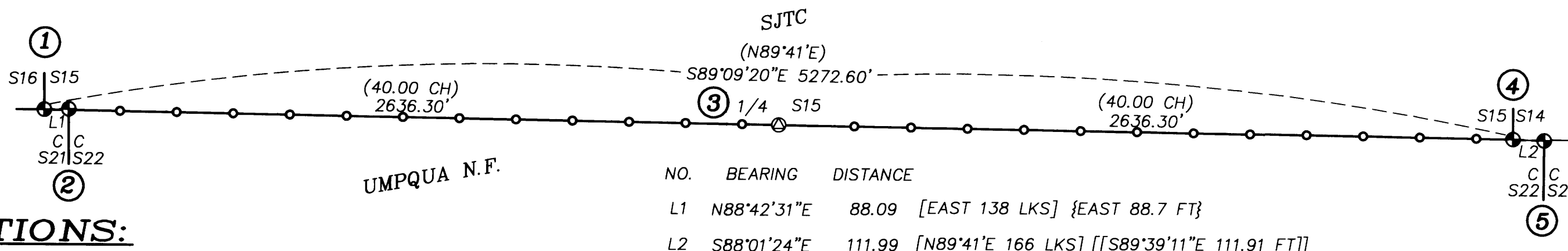
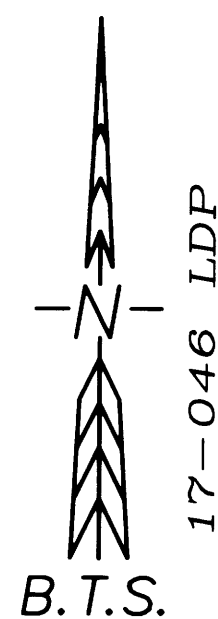
DOUGLAS COUNTY, OREGON

"CAVITT 15 SURVEY"

FILED

Date: 8-1-2017 By: J.C.
 This Survey Consists of:
 Map: M173-46
 Narrative:
 Corner Rpt.:
 DOUGLAS COUNTY
 SURVEYOR

MAP FILE M173-46

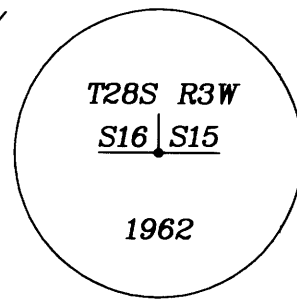


CORNER DESCRIPTIONS:

ALL NEW BEARING TREES HAVE DOUBLE BLAZED FACES WITH A 1" BRASS WASHER STAMPED "DEGROOT PLS 89398" NAILED INTO THE LOWER BLAZE. BEARINGS ARE TAKEN TO THE CENTER OF THE TREE AT THE ROOT CROWN AND DISTANCES ARE MEASURED TO A NAIL IN THE ROOT CROWN AT THE SIDE AND CENTER OF THE TREE WITH A TOTAL STATION. ALL BEARING TREES HAVE A 6" RED BAND PAINTED AROUND THE TREE AND THE BLAZED FACE PAINTED RED AND BEARING TREE SIGNS NAILED TO THE TREE.

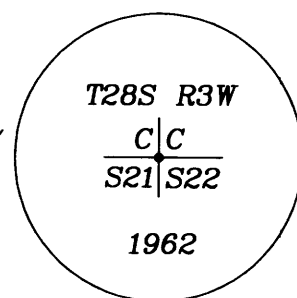
① S15/S16 ONLY PLSS ID. NO. T28SR03W 400400 ORIGINAL
 FOUND A 1 1/4" IRON POST BY J. BYRON IN 1962 PER C.S. 52/126, PROJECTING 18" ABOVE GROUND, LOOSELY SET AND LEANING EASTERLY, WITH A 2 1/2" COUNTY SURVEYORS OFFICE BRASS CAP MARKED:
 I RESET MONUMENT, NOW PROJECTING 8" ABOVE GROUND, IN AN 18" STONE COLLAR.

FROM WHICH THE REMAINING ORIGINAL BEARING TREES BY FLINT IN 1882:
 A 26" ROTTED MADRONE STUMP BEARS N.53°E., 36.1 FT (N.55°E., 56 LKS) [N.53°E., 56 LKS]
 A 43" D.FIR BEARS N.20°W., 45.0 FT W/ HEALED SINGLE BLAZE (N.20°W., 70 LKS)
 AND AN UN-RECORDED BEARING TREE:
 A 28" D.FIR BEARS N.17°30'W., 40.7 FT W/ PARTIALLY HEALED PREVIOUSLY OPENED BLAZE
 AND A NEW BEARING TREE:
 A 9" D.FIR BEARS N.51°30'W., 19.8 FT SCRIBED "T28S R3W S15 BT"



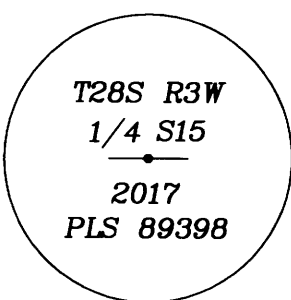
② CC S21/S22 PLSS ID. NO. T28SR03W 402400 ORIGINAL
 FOUND A 1 1/4" IRON POST BY J. BYRON IN 1962 PER C.S. 52/126, PROJECTING 18" ABOVE GROUND, LOOSELY SET AND LEANING SOUTH EASTERLY, WITH A 2 1/2" COUNTY SURVEYORS OFFICE BRASS CAP MARKED:
 I RESET MONUMENT, NOW PROJECTING 8" ABOVE GROUND, IN A 12" STONE COLLAR.

FROM WHICH THE ORIGINAL BEARING TREES BY GIBB IN 1910:
 A 27" D.FIR HIGH STUMP BEARS S.21°45'E., 29.8 FT W/ HEALED BLAZE [S.24°E., 44 LKS]
 A 23" D.FIR HIGH STUMP BEARS S.40°W., 9.9 FT I REOPEN BLAZE AND FIND SCRIBE MKS "8S R3W S21 BT" [S.40°W., 14 LKS]
 AND NEW BEARING TREES:
 A 9" D.FIR BEARS S.42°15'E., 12.5 FT MARKED "T28S R3W S22 BT"
 A 10" D.FIR BEARS S.85°W., 22.4 FT MARKED "T28S R3W S21 BT"



③ 1/4 S15 ONLY PLSS ID. NO. T28SR03W 440400
 AT THE PROPORTIONED POSITION:
 SET A 1 1/2" X 30" IRON POST, 22" IN THE GROUND, IN A 18" DIAM. X 6" HIGH STONE MOUND,
 WITH A 2 1/2" BRASS CAP MARKED:

FROM WHICH NEW BEARING TREES:
 A 14" HEMLOCK BEARS N.56°15'E., 23.5 FT SCRIBED "1/4 S15 BT"
 A 22" HEMLOCK BEARS N.42°W., 16.8 FT SCRIBED "1/4 S15 BT"
 AND NEW REFERENCE MONUMENTS:
 A MAG-HUB AND BRASS WASHER SET IN LOW FACE NOTCH OF A 74" D.FIR BEARS S.66°47'W., 8.53 FT
 A MAG-HUB AND BRASS WASHER SET IN OPENED FACE OF A 37" D.FIR BEARS S.56°04'E., 56.11 FT



④ S14/S15 ONLY PLSS ID. NO. T28SR03W 500400 ORIGINAL
 FOUND A 2 1/2" STAINLESS STEEL POST BY KENNETH SAVELAND IN 2009 PER USBLM PLAT NO. 7481, DATED 03/24/2011 (DCSO VOL 56 PG 22292), PROJECTING 4" ABOVE GROUND, WITH A PROPERLY MARKED 3 1/4" BRASS CAP AND ACCESSORIES PER THE 2009 BLM RECORD.

⑤ CC S22/S23 PLSS ID. NO. T28SR03W 502400 ORIGINAL
 FOUND A 2 1/2" STAINLESS STEEL POST BY KENNETH SAVELAND IN 2009 PER USBLM PLAT NO. 7481, DATED 03/24/2011 (DCSO VOL 56 PG 22293), PROJECTING 2" ABOVE GROUND, WITH A PROPERLY MARKED 3 1/4" BRASS CAP AND ACCESSORIES PER THE 2009 BLM RECORD.

NO.	BEARING	DISTANCE
L1	N88°42'31"E	88.09 [EAST 138 LKS] {EAST 88.7 FT}
L2	S88°01'24"E	111.99 [N89°41'E 166 LKS] [[S89°39'11"E 111.91 FT]]

NARRATIVE:

THE PURPOSE OF THIS SURVEY IS TO POST AND MARK THE SOUTH BOUNDARY AND MONUMENT THE SOUTH 1/4 CORNER OF SECTION 15, T.28S., R.3W., W.M. SECTION 15 WAS ORIGINALLY SURVEYED BY SAMUEL FLINT IN 1882, PER GLO CONTRACT NO. 459, WHICH SURVEYED A PORTION OF T.28S., R.3W., OF WHICH SECTION 15 WAS ON THE SOUTHERN TIER OF THE ORIGINAL SURVEYED SECTIONS. THE TOWNSHIP WAS COMPLETED BY WILLIAM GIBB IN 1910, PER GLO CONTRACT NO. 783, AND AS PERTAINING TO THIS SURVEY, SET THE ORIGINAL CLOSING CORNERS OF SECTIONS 21 & 22, AND SECTIONS 22 & 23 ON THE SOUTH BOUNDARY OF SECTIONS 15 & 14, BUT DID NOT RETRACE THE SOUTH BOUNDARY OF S15. THE CC S22/S23 AND THE STANDARD CORNER OF S15/S14 WERE MONUMENTED IN THEIR ORIGINAL POSITIONS BY THOMAS SHRUM IN 1960 PER M11-79, PERPETUATED BY DCOS IN 1962, AND REMONUMENTED BY SAVELAND IN 2009. THE STANDARD CORNER OF S16/S15 AND THE CC OF S21/S22 WERE MONUMENTED IN THEIR ORIGINAL POSITIONS BY DCOS IN 1962. I MAKE DILIGENT SEARCH AT THE COMPUTED POSITION OF THE 1/4 S15 FOR THE ORIGINAL BEARING TREES, WITH NO EVIDENCE RECOVERED, THE CORNER IS LOST. THERE IS MUCH EVIDENCE OF SURVEY BRUSH LINES, AND CUT LINES NORTH AND SOUTH OF THE BOUNDARY WHICH ARE HARMONIOUS WITH THE STRAIGHT LINE BETWEEN THE STANDARD CORNERS. THEREFORE I ACCEPT THE STANDARD CORNERS AS CONTROLLING THE SOUTH BOUNDARY OF SECTION 15, MONUMENT THE 1/4 S15 AT THE PROPORTIONED POSITION, AND POST, PAINT, & BLAZE THE BOUNDARY LINE.

A STATIC GPS SURVEY NETWORK WAS PERFORMED, HOLDING ODOT ORGN STATIONS "RSBG" AND "PSPT" FIXED IN THEIR PUBLISHED POSITIONS, WITH NEW CONTROL POINTS PROCESSED AND ADJUSTED IN LEICA GEO OFFICE BY THE METHOD OF LEAST SQUARES. THE RESULTANT GEODETIC COORDINATES WERE THEN PROJECTED INTO THE BELOW DEFINED COORDINATE SYSTEM. A SINGLE LINE TRAVERSE WAS SURVEYED FROM THE GPS CONTROL ALONG THE SOUTH BOUNDARY OF SECTION 15, AND ADJUSTED IN LEICA GEO OFFICE BY THE METHOD OF LEAST SQUARES. THIS SURVEY WAS PERFORMED BY ADAM DEGROOT, ALEX HOLLAND, AND RYLAND PARAZOO USING LEICA SYSTEM 1200 GPS RECEIVERS AND A LEICA TCRP 1203 TOTAL STATION WITH COMPUTATIONS AND DRAFTING BY ALEX HOLLAND & ADAM DEGROOT.

TRANSVERSE MERCATOR PROJECTION: 17-046 LDP
 REFERENCE DATUM: NAD 83 (2011) EPOCH 2010.00
 LATITUDE OF ORIGIN: 43°06'00"N.
 CENTRAL MERIDIAN: 123°02'30"W.
 CENTRAL MERIDIAN SCALE: 1.000140
 FALSE NORTHING: 100000.000 FTI
 FALSE EASTING: 250000.000 FTI

NAD 83 (2011) EPOCH 2010.00 GEODETIC COORDINATES:		
STATION	LATITUDE	LONGITUDE
400400	43°07'35.90791"N	123°03'05.38592"W
402400	43°07'35.92761"N	123°03'04.19860"W
440400	43°07'35.52567"N	123°02'29.84555"W
500400	43°07'35.14037"N	123°01'54.30530"W
502400	43°07'35.10208"N	123°01'52.79627"W

LEGEND:

- ⊙ = FOUND PLSS MONUMENT AS NOTED
- ⊕ = SET 1 1/2" X 30" BRASS CAPPED IRON POST AS NOTED
- () = RECORD PER USGLO PLAT NO. 393 - SAMUEL FLINT 1882
- [] = RECORD PER USGLO PLAT NO. 394 - WILLIAM GIBB 1910
- { } = RECORD PER C.S. FILE 52/126 - JAMES BYRON 1962
- [[]] = RECORD PER USBLM PLAT NO. 7481 - KENNETH SAVELAND 2009
- = PROPERTY LINES BLAZED, PAINTED & POSTED WITH 5 1/2' STEEL POSTS

REGISTERED
**PROFESSIONAL
 LAND SURVEYOR**

OREGON
 MAY 26, 2015
ADAM DEGROOT
 89398

RENEWS: 12-31-2017

BTS

SURVEYING, INC.
 348 SE JACKSON ST., ROSEBURG, OR 97470
 (541) 673-0966 adam@btssurveying.com

SCALE: 1" = 400'	FOR: SENECA JONES TIMBER CO. PO BOX 2129 ROSEBURG, OR 97470	JOB #: 17-046 FILE: 17-046 CAVITT15.DWG SHEET 1 OF 1
DATE: JULY 31, 2017		

MAP FILE M173-46