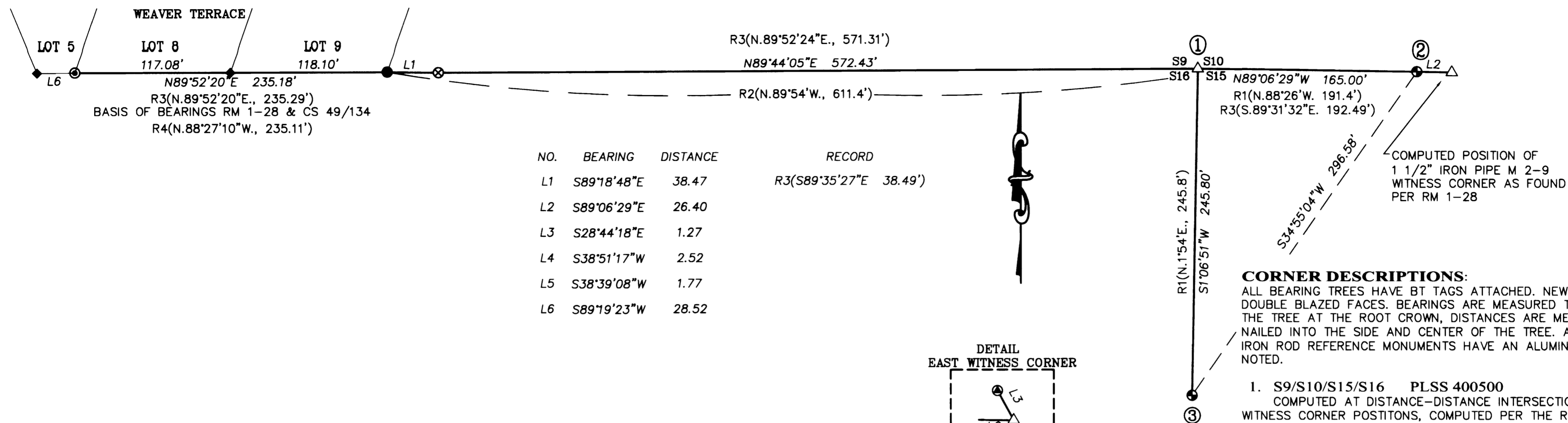
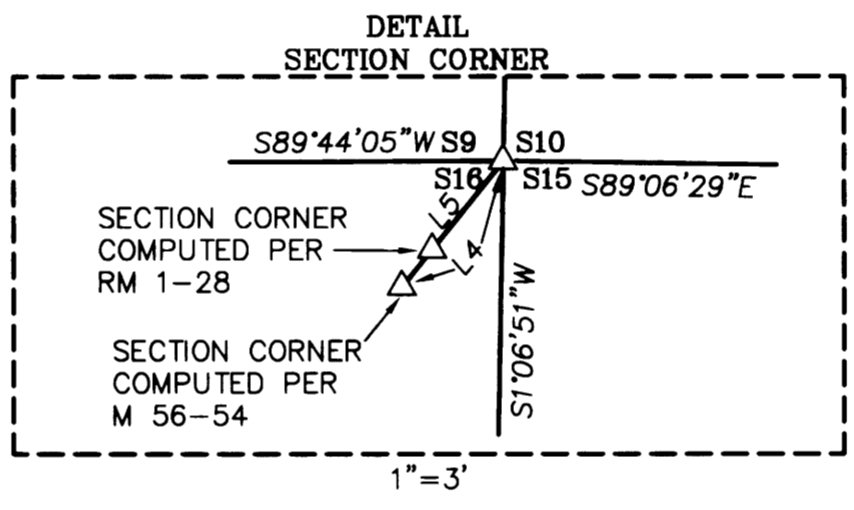


MAP FILE A173-22

FILED
 Date: 5-2-2017
 By: JC
 Map: A173-22
 Narrative:
 Corner Rpt: CS 6744-1
 DOUGLAS COUNTY SURVEYOR



NO.	BEARING	DISTANCE	RECORD
L1	S89°18'48\"E	38.47	R3(S89°35'27\"E 38.49')
L2	S89°06'29\"E	26.40	
L3	S28°44'18\"E	1.27	
L4	S38°51'17\"W	2.52	
L5	S38°39'08\"W	1.77	
L6	S89°19'23\"W	28.52	



CORNER DESCRIPTIONS:

ALL BEARING TREES HAVE BT TAGS ATTACHED. NEW BEARING TREES HAVE DOUBLE BLAZED FACES. BEARINGS ARE MEASURED TO THE CENTER OF THE TREE AT THE ROOT CROWN, DISTANCES ARE MEASURED TO A SPIKE NAILED INTO THE SIDE AND CENTER OF THE TREE. ALL NEW 5/8" x 30" IRON ROD REFERENCE MONUMENTS HAVE AN ALUMINUM CAP STAMPED AS NOTED.

- S9/S10/S15/S16 PLSS 400500**
 COMPUTED AT DISTANCE-DISTANCE INTERSECTION FROM M 2-9 WITNESS CORNER POSITIONS, COMPUTED PER THE RM 1-28 & CS49/134 RECORD AS DETAILED IN THE NARRATIVE.
- EAST WITNESS CORNER**
 AT A POINT ON THE NORTH LINE OF SECTION 15, 165.00 FEET EAST OF THE SECTION CORNER I SET A 1"x 32" IRON PIPE, 32" IN THE GROUND WITH A 2 1/2" BRASS CAP MARKED:
 COUNTY SURVEYORS OFFICE

T30S	R4W
S9	S10
165'W	S16
	S15
	2016

FROM WHICH A BEARING TREE BY BYRON IN 1963 PER CS 53/26:
 A 34" B. OAK BEARS N.53°W., 27.6 FT. WITH A HEALED BLAZE
 AND A REFERENCE MONUMENT BY BYRON IN 1963 PER CS 53/26:
 A 3/4" IRON ROD BURIED 12" BELOW THE GROUND BEARS N.88°26'21"E., 25.80 FT.
 AND A NEW BEARING TREE:
 A 21" E. WALNUT BEARS N.16°E., 173.4 FT. SCRIBED "BT" ON A SINGLE BLAZE.
 NOTE: THE CS 53/26 BRASS CAP IS MISSING AND THE BEARING TREES PER CS 49/134 ARE MISSING.

- SOUTH WITNESS CORNER**
 FOUND A 3"x6"x14" STONE PER M 2-9, BURIED 12" WITH A CHISEL MARKS (CROWS FOOT) PER RM 1-28 VISIBLE. I SET A 1"x 32" IRON PIPE, 30" IN THE GROUND WITH A 2 1/2" BRASS CAP MARKED:
 COUNTY SURVEYOR

T30S	R4W
WC	S9
	S10
	S16
	S15
	NORTH
	245.8'
	2017

FROM WHICH A BEARING TREE BY STEWART PER M 2-9:
 A 16" W. OAK BEARS S.40°45'E., 43.0 FT. BLAZE NO LONGER EVIDENT (REC. S.39°E., 43.0 FT.)
 AND REFERENCE MONUMENTS BY BROWN PER M 119-62:
 A 5/8" IRON ROD WITH PLASTIC CAP BEARS N.3°29'28"W., 10.95 FT.
 A 5/8" IRON ROD WITH PLASTIC CAP BEARS S.1°17'21"W., 156.37 FT.
 AND NEW BEARING TREES:
 A 7" W. OAK BEARS N.19°15'E., 14.9 FT. SCRIBED "SWC CS BT".
 A 11" MADRONE BEARS S.6°30'W., 75.9 FT. SCRIBED SWC CS BT"
 RE-SET 3"x6"x14" STONE ON S. EDGE OF BCIP FLUSH WITH GROUND

LEGEND:

- ⊕ = SET DCSO BCIP AS NOTED PER CORNER DESCRIPTION
- ◆ = FOUND 1 1/2" IRON PIPE (I.D.) PER M 13-80
- ⊗ = FOUND 1/2" IRON PIPE (I.D.) PER RM 1-28
- ⊙ = FOUND 3/4" IRON ROD PER C.S. FILE NO. 53/26
- △ = COMPUTED POINT NOT SET

- R1() = RECORD PER M 2-9 & VOL. 3, PG. 136
- R2() = RECORD PER M 13-80
- R3() = RECORD PER RM 1-28 & CS 49/134
- R4() = RECORD PER M 161-6

NARRATIVE:

SURVEY HISTORY:

1854 USGLO NATHANIEL FORD, USGLO PLAT AND FIELD NOTES FOR T.30S., R.04W., W.M. FORD SET A POST & MARKED ONE BEARING TREE
 1889 USGLO WM. THIEL, USGLO PLAT NO. 557 FOR T.30S., R.04W., W.M. AND FIELD NOTE PAGES 7060-7061. THIEL RESTORED THE CORNER FROM FORD'S ORIGINAL LINE BLAZES NORTH, SOUTH, EAST AND WEST OF THE CORNER AND THEN SET A WITNESS CORNER 278 LKS. EAST ON THE NORTH LINE OF SECTION 15 AND MARKED TWO NEW BEARING TREES.
 1922 DCSO G.G. STEWART, DEPUTY COUNTY SURVEYOR PER M 2-9, VOL 3, PG. 136 & C.S. FILE NO. 7/6. STEWART SUBDIVIDED SECTION 15 AND COMPUTED THE POSITION OF THE 1889 WITNESS CORNER FROM THIEL'S BEARING TREES AND THEN SET A NEW IRON PIPE WITNESS CORNER ON THE NORTH LINE OF SECTION 15, 290 LKS. EAST OF THE SECTION CORNER AND ALSO SET A NEW ROCK WITNESS CORNER ON THE WEST LINE OF SECTION 15, 245.8 FT. SOUTH OF THE SECTION CORNER.
 1928 DCSO H.L. EPPSTEIN, COUNTY SURVEYOR PER M 4-45, VOL. 3, PG 288-289 & C.S. FILE NO. 7/52. EPPSTEIN SET THE CORNER FROM STEWART'S WITNESS CORNERS AND SUBDIVIDED SECTION 9, SETTING AN IRON PIPE AT THE E 1/16 OF SECTIONS 9 AND 16.
 1944 B.B. IRVING PER M 13-80 & C.S. FILE NO. 39/6. IRVING COMPUTED THE SECTION CORNER FROM AT RECORD DISTANCES FROM STEWART'S TWO WITNESS CORNERS AND SET IRON PIPES ON THE NORTH LINE OF SECTION 16 WEST OF THE SECTION CORNER.
 1945 DCSO B.B. IRVING, COUNTY SURVEYOR, PER M 26-48 & C.S. FILE NO. 38/35. IRVING FOUND THE IRON PIPE WITNESS CORNER 191.4 FT. (290 LKS.) EAST OF THE SECTION CORNER AND SET A 3/4" IRON PIPE ON THE NORTH LINE OF SECTION 15, 126.0 FT. EAST OF THE SECTION CORNER.
 1959 DCSO J.W. BYRON, DEPUTY COUNTY SURVEYOR, PER RM 1-28 & C.S. FILE NO. 49/134. BYRON SUBDIVIDED SECTION 16 AND FOUND BOTH OF STEWART'S WITNESS CORNERS. BYRON HELD EPPSTEIN'S E 1/16 CORNER PER M 4-45 & IRVING'S M 13-80 IRON PIPE AT 200 FT. WEST OF THE CORNER TO CONTROL THE NORTH LINE OF SECTION 16 AND HELD THIEL'S WITNESS CORNER TO THE 1/4 CORNER OF SECTIONS 15 & 16 AND STEWART'S ROCK WITNESS CORNER, 245.8 FT. SOUTH OF THE SECTION CORNER TO CONTROL THE EAST LINE OF SECTION 16. BYRON RETURNED NEW DISTANCES FROM THE SECTION CORNER TO THE TWO FOUND WITNESS CORNERS.
 1963 DCSO J.W. BYRON, DEPUTY COUNTY SURVEYOR PER C.S. FILE NO. 53/26. STEWART'S IRON PIPE WITNESS CORNER WAS MISSING AND STEWART'S ROCK WITNESS CORNER WAS NOT MENTIONED IN BYRON'S RENEWAL. BYRON SET A NEW 3/4" IRON ROD AT THE POSITION OF STEWART'S IRON PIPE WITNESS CORNER FROM STEWART'S BEARING TREES AND THE SET A NEW BRASS CAPPED IRON PIPE WITNESS CORNER AT 165.5 FEET EAST OF THE CORNER AND MARKED NEW BEARING TREES TO THE BRASS CAP.
 1976 W.J. RUPPERT PER M 56-54 COMPUTED THE SECTION CORNER PROPORTIONATELY BETWEEN BYRON'S 3/4" IRON ROD AND EPPSTEIN'S 1" IRON PIPE AT THE E 1/16 S9/S16.
 1995 R.F. BROWN PER M 119-62 HELD RUPPERT'S COMPUTED CORNER POSITION AND SET NEW MONUMENTS ON THE EAST LINE OF SECTION 16 AS SET FORTH IN M 56-54.
 2003 D.J. BEEDLE PER PARTITION PLAT 2003-0074 COMPUTED THE SECTION CORNER PER M 56-54 & M 119-62.

PURPOSE AND PROCEDURE:

THE PURPOSE OF THIS SURVEY IS TO RENEW THE SECTION CORNER COMMON TO SECTIONS 9, 10, 15 & 16 OF T.30S., R.04W., W.M.
 THIS SURVEY COMPUTES THE 1889 THIEL CORNER POSITION AS PERPETUATED UNDER M 2-9, M 4-45, M 13-80 AND M 26-48 FROM THE COORDINATES SET FORTH IN RM 1-28 (CS 49/134). CS 49/134 IS THE COMPUTATION FILE FOR RM 1-28 AND CONTAINED COORDINATES FOR THE 1 1/4" IRON PIPE EAST WITNESS CORNER PER M 2-9, THE ROCK SOUTH WITNESS CORNER PER M 2-9, AND FOUR MONUMENTS ON THE NORTH LINE OF SECTION 16 LYING BETWEEN THE EAST 1/16 S9/S16 PER M 4-45. UNDER THIS SURVEY THREE OF THE FOUR MONUMENTS WERE FOUND: A 1 1/2" IRON PIPE PER M 13-80, A 1/2" IRON PIPE AT THE SOUTHEAST CORNER OF LOT 8, WEAVER TERRACE AND A 1/2" IRON PIPE ALONG WITH THE 3/4" IRON ROD PER CS 53/26. USING THE CS 49/134 COORDINATES, I COMPUTED THE POSITION OF THE 1 1/4" IRON PIPE EAST WITNESS CORNER AND THE ROCK SOUTH WITNESS CORNER PER M 2-9 AND THEN FOUND THE ROCK WITNESS CORNER AT THE COMPUTED CORNER POSITION. I THEN COMPUTE THE POSITION OF THE SECTION CORNER AT A DISTANCE-DISTANCE INTERSECTION OF RECORD M 2-9 DISTANCES AND DO NOT ACCEPT THE RM 1-28 OR THE M 56-54 CORNER POSITIONS. I THEN ESTABLISHED A NEW WITNESS CORNER ON THE COMPUTED NORTH LINE OF SECTION 15, 165.00 FEET EAST OF THE SECTION CORNER AND RESTORE THE SOUTH WITNESS CORNER ON THE WEST LINE OF SECTION 15 IN ITS FOUND M 2-9 POSITION.
 THIS SURVEY WAS PERFORMED BY STEPHEN FLAUSE & MIKE KOCH WITH SURVEY MEASUREMENTS TAKEN WITH A NIKON DTM 520 TOTAL STATION AND ADJUSTED WITH TRAVERSE PC SOFTWARE. THIS SURVEY WAS COMMENCED IN SEPTEMBER, 2016 AND COMPLETED IN FEBRUARY, 2017.

RECORD OF SURVEY		REGISTERED PROFESSIONAL LAND SURVEYOR
LOCATED IN THE NW 1/4 of SECTION 15 & NE 1/4 of SECTION 16 T.30S., R.04W., W.M. DOUGLAS COUNTY, OREGON		
DOUGLAS COUNTY SURVEYOR		
ROOM 105 JUSTICE BLDG. 1036 S.E. DOUGLAS AVE. ROSEBURG, OREGON 97470		
SCALE: 1" = 60'	FILE: 30-04-400500.dwg	OREGON JULY 17, 1981 KRISTIAN O. DEGROOT 1941
DATE: MARCH, 2017	SHEET 1 OF 1	
		RENEWAL DATE: 12-31-2017

MAP FILE A173-22