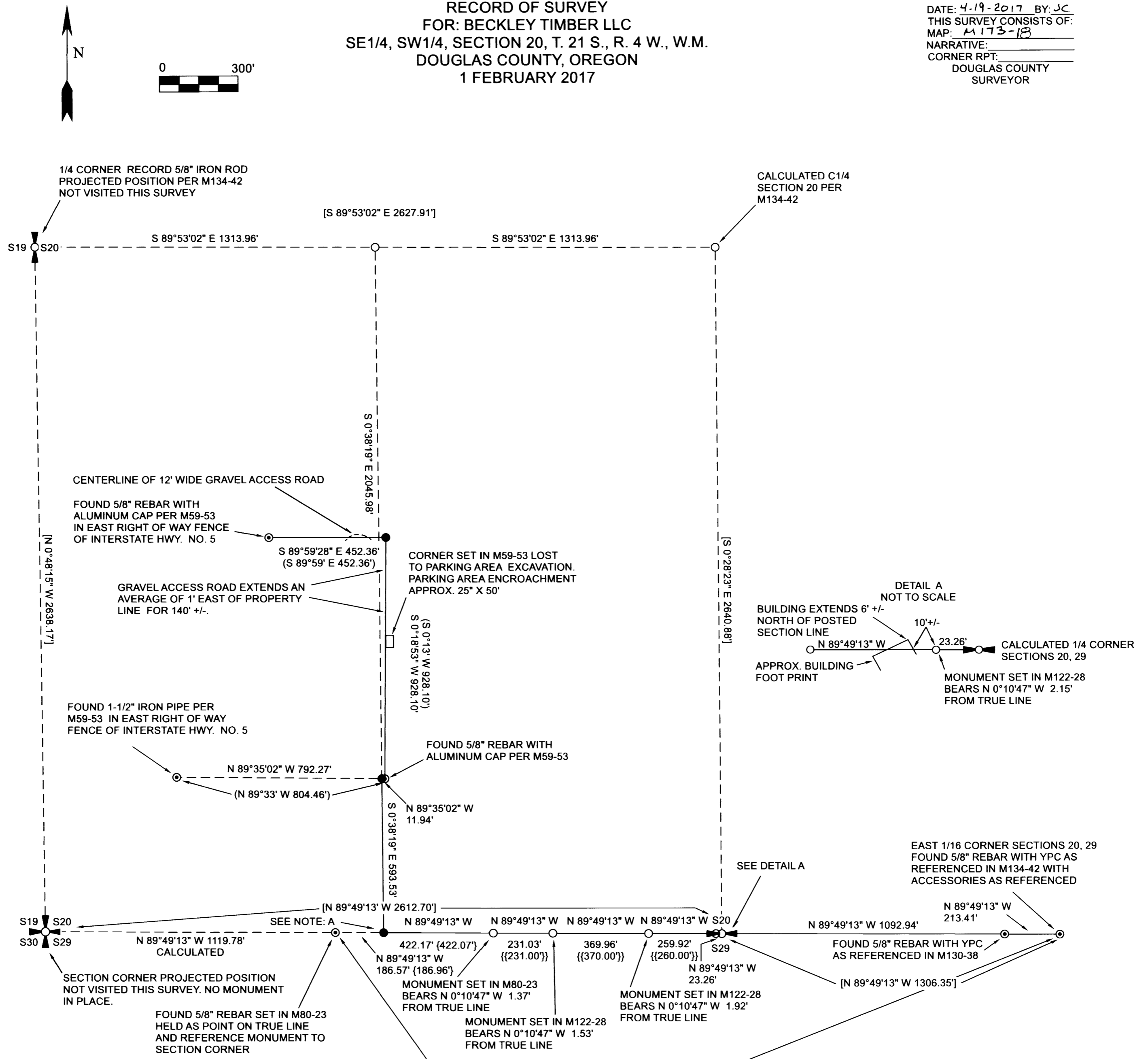


RECORD OF SURVEY
 FOR: BECKLEY TIMBER LLC
 SE1/4, SW1/4, SECTION 20, T. 21 S., R. 4 W., W.M.
 DOUGLAS COUNTY, OREGON
 1 FEBRUARY 2017

FILED
 DATE: 4-19-2017 BY: JC
 THIS SURVEY CONSISTS OF:
 MAP: M173-18
 NARRATIVE:
 CORNER RPT:
 DOUGLAS COUNTY
 SURVEYOR



NOTE: A
 W1/16 SECTIONS 20, 29
 SET 5/8" X 30" REBAR WITH 2-1/2" ALUMINUM CAP MARKED AS
 SHOWN AND ESTABLISHED THE FOLLOWING ACCESSORIES:
 9" MADRONE BEARS S 27° E 6.0' - BLAZED, SCRIBED W1/16 S29 BT
 8" W. OAK BEARS N 46° W 9.1' - BLAZED, SCRIBED W1/16 S20 BT

NARRATIVE:
 THE PURPOSE OF THIS SURVEY WAS TO MARK TRUE LINE BETWEEN THE CORNERS AS
 SHOWN HEREON AND ESTABLISH OR REESTABLISH CERTAIN CORNERS NOT PREVIOUSLY
 SET OR MISSING IN SECTION 20, OF TOWNSHIP 21 SOUTH, RANGE 4 WEST, WILLAMETTE
 MERIDIAN.

FOR THE ESTABLISHMENT OF THE NORTH-SOUTH CENTERLINE OF THE SW1/4 OF SECTION
 20, A PROJECTION OF COUNTY SURVEY FILE M134-42 WAS USED. CORNERS ALONG THE
 SOUTH LINE OF SECTION 20 WERE TIED FOR CONTROL. THE MOST WESTERLY MONUMENT
 SET IN M80-23 ON THE SOUTH LINE OF SECTION 20 WAS HELD AS A POINT ON LINE AND
 CLOSELY MATCHES THE SOUTH LINE AS SURVEYED IN M130-38. ALSO NOTE M130-38
 DOCUMENTS THE CORNERS SET IN M122-28 AS NOT FALLING ON LINE. THE W1/16 CORNER
 ON THE SOUTH LINE OF SECTION 20 WAS SET AT THE MIDPOINT OF THE RECORD HALF MILE
 PER M134-42.

THE INTERSECTION OF THE NORTH-SOUTH CENTERLINE OF THE SW1/4 OF SECTION 20 WITH
 THE SOUTH LINE OF THE SAMUEL HALL D.L.C. NO. 37 WAS CALCULATED BY TIEING
 CONTROLLING CORNERS AS REFERENCED IN COUNTY SURVEY FILE M59-53. COUNTY
 SURVEY FILE M59-53 WAS ROTATED TO A COMMON BASIS OF BEARING WITH M134-42. THE
 NORTHEAST CORNER OF M59-53 WAS MISSING ALONG WITH ALL BEARING TREES. THIS
 CORNER WAS RESET BY DISTANCE-DISTANCE INTERSECTION HOLDING RECORD M59-53
 MEASURE FROM THE FOUND SOUTHEAST AND NORTHWEST CORNERS.

LEGEND

- 1/4 CORNER AS NOTED
- SECTION CORNER AS NOTED
- LINE MARKED AS DEFINED IIN NARRATIVE
- [] COUNTY SURVEY FILE M134-42 RECORD DATA
- () COUNTY SURVEY FILE M59-53 RECORD DATA
- { } M80-23 RECORD DATA
- {{ }} M122-28 RECORD DATA
- CALCULATED POSITION
- SET 5/8" X 30" REBAR WITH YELLOW PLASTIC CAP MARKED 54633LS UNLESS OTHERWISE NOTED
- ⊙ FOUND SURVEY MONUMENT AS NOTED

REGISTERED
 PROFESSIONAL
 LAND SURVEYOR
Ronald L. Rice
 OREGON
 JULY 9, 2002
 RONALD L. RICE
 54633LS

Northwest Land Surveying, Inc.
 P. O. Box 2827
 FLORENCE, OR 97439 541-997-9201

FILE NAME 17-001.TRV	DRAWING RECORD OF SURVEY	
SCALE 300 Ft/In	DATE 2-1-2017	DRAWN BY RLR
JOB CURTIN S20	REVISION -----	SHEET 1/1

EXPIRATION DATE: 12-31-2018

This map was drawn with TRAVERSE PC Software