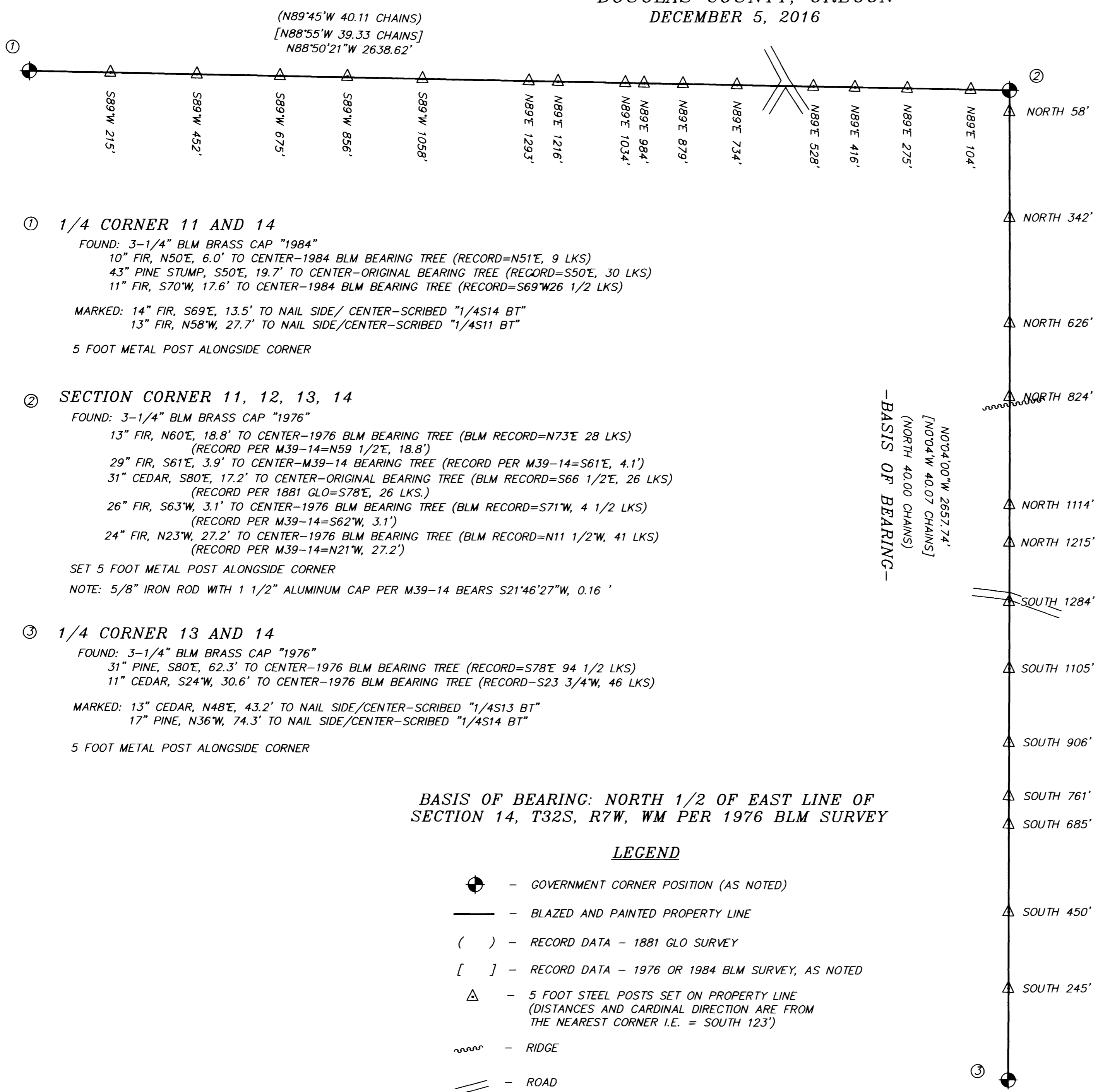


**BOUNDARY SURVEY IN
NORTHEAST 1/4 OF SECTION 14, T32S, R7W, W.M.
DOUGLAS COUNTY, OREGON
DECEMBER 5, 2016**

FILED
Date: 1-12-2017 By: JC
This survey consists of:
Map: H173-1
Narrative:
Corner Rpt:
DOUGLAS COUNTY
SURVEYOR

N
SCALE 1" = 200'



① 1/4 CORNER 11 AND 14

FOUND: 3-1/4" BLM BRASS CAP "1984"
10" FIR, N50°E, 6.0' TO CENTER-1984 BLM BEARING TREE (RECORD=N51°E, 9 LKS)
43" PINE STUMP, S50°E, 19.7' TO CENTER-ORIGINAL BEARING TREE (RECORD=S50°E, 30 LKS)
11" FIR, S70°W, 17.6' TO CENTER-1984 BLM BEARING TREE (RECORD=S69°W26 1/2 LKS)
MARKED: 14" FIR, S69°E, 13.5' TO NAIL SIDE/CENTER-SCRIBED "1/4S14 BT"
13" FIR, N58°W, 27.7' TO NAIL SIDE/CENTER-SCRIBED "1/4S11 BT"
5 FOOT METAL POST ALONGSIDE CORNER

② SECTION CORNER 11, 12, 13, 14

FOUND: 3-1/4" BLM BRASS CAP "1976"
13" FIR, N60°E, 18.8' TO CENTER-1976 BLM BEARING TREE (BLM RECORD=N73°E 28 LKS)
(RECORD PER M39-14=N59 1/2°E, 18.8')
29" FIR, S61°E, 3.9' TO CENTER-M39-14 BEARING TREE (RECORD PER M39-14=S61°E, 4.1')
31" CEDAR, S80°E, 17.2' TO CENTER-ORIGINAL BEARING TREE (BLM RECORD=S66 1/2°E, 26 LKS)
(RECORD PER 1881 GLO=S78°E, 26 LKS.)
26" FIR, S63°W, 3.1' TO CENTER-1976 BLM BEARING TREE (BLM RECORD=S71°W, 4 1/2 LKS)
(RECORD PER M39-14=S62°W, 3.1')
24" FIR, N23°W, 27.2' TO CENTER-1976 BLM BEARING TREE (BLM RECORD=N11 1/2°W, 41 LKS)
(RECORD PER M39-14=N21°W, 27.2')
SET 5 FOOT METAL POST ALONGSIDE CORNER
NOTE: 5/8" IRON ROD WITH 1 1/2" ALUMINUM CAP PER M39-14 BEARS S21°46'27"W, 0.16'

③ 1/4 CORNER 13 AND 14

FOUND: 3-1/4" BLM BRASS CAP "1976"
31" PINE, S80°E, 62.3' TO CENTER-1976 BLM BEARING TREE (RECORD=S78°E 94 1/2 LKS)
11" CEDAR, S24°W, 30.6' TO CENTER-1976 BLM BEARING TREE (RECORD-S23 3/4°W, 46 LKS)
MARKED: 13" CEDAR, N48°E, 43.2' TO NAIL SIDE/CENTER-SCRIBED "1/4S13 BT"
17" PINE, N36°W, 74.3' TO NAIL SIDE/CENTER-SCRIBED "1/4S14 BT"
5 FOOT METAL POST ALONGSIDE CORNER

BASIS OF BEARING: NORTH 1/2 OF EAST LINE OF SECTION 14, T32S, R7W, WM PER 1976 BLM SURVEY

LEGEND

- GOVERNMENT CORNER POSITION (AS NOTED)
- BLAZED AND PAINTED PROPERTY LINE
- RECORD DATA - 1881 GLO SURVEY
- RECORD DATA - 1976 OR 1984 BLM SURVEY, AS NOTED
- 5 FOOT STEEL POSTS SET ON PROPERTY LINE (DISTANCES AND CARDINAL DIRECTION ARE FROM THE NEAREST CORNER I.E. = SOUTH 123')
- RIDGE
- ROAD

-NARRATIVE-

THIS SURVEY WAS MADE IN DECEMBER, 2016 BY DANIEL W. BAKER OF BAKER AND ASSOCIATES SURVEYORS, INC. FOR WEYERHAEUSER COMPANY IN THE NORTHEAST 1/4 OF SECTION 14, TOWNSHIP 32 SOUTH, RANGE 7 WEST, WILLAMETTE MERIDIAN. THE PURPOSE OF THIS SURVEY WAS TO LOCATE AND MARK IN THE FIELD, THE EAST 1/2 OF THE NORTH LINE AND THE NORTH 1/2 OF THE EAST LINE OF SECTION 14. THE BASIS OF BEARING FOR THIS SURVEY WAS THE NORTH 1/2 OF THE EAST LINE OF SECTION 14 PER THE 1976 BUREAU OF LAND MANAGEMENT SURVEY. A CLOSED TRAVERSE WAS RUN BETWEEN FOUND CORNERS FOR CONTROL, WITH AN ERROR OF GREATER THAN 1' IN 20,000', BEFORE ANGULAR ADJUSTMENT. THE SECTION CORNER COMMON TO SECTIONS 11, 12, 13 AND 14 WAS A PERPETUATED ORIGINAL CORNER THAT WAS MONUMENTED BY THE BUREAU OF LAND MANAGEMENT IN 1976. THE 1/4 CORNER COMMON TO SECTIONS 11 AND 14 WAS A PERPETUATED ORIGINAL CORNER THAT WAS MONUMENTED BY THE BUREAU OF LAND MANAGEMENT IN 1984. THE 1/4 CORNER COMMON TO SECTIONS 13 AND 14 WAS A PROPORTIONED CORNER THAT WAS MONUMENTED BY THE BUREAU OF LAND MANAGEMENT IN 1976 (THE ORIGINAL CORNER WAS NOT FOUND). THE TRUE PROPERTY (SECTION) LINES WERE MARKED BY BLAZING TREES ON EITHER SIDE OF THE TRUE PROPERTY LINE (BLAZES PAINTED ORANGE) AND BY SETTING 5 FOOT METAL POSTS AT RANDOM INTERVALS ALONG THE TRUE PROPERTY LINES, AS NOTED. NO NEW CORNERS WERE ESTABLISHED IN THIS SURVEY AND CORNER ACCESSORIES WERE ADDED AS NEEDED.

REGISTERED
PROFESSIONAL
LAND SURVEYOR

OREGON
JULY 16, 1982
DANIEL W. BAKER
1978

EXPIRES 12/31/17
I CERTIFY THAT THIS MAP WAS PREPARED USING A HP51645A INK CARTRIDGE ON JPC-4M2 DOUBLE MATTE FILM

BOUNDARY SURVEY IN NORTHEAST 1/4 OF SECTION 14, T32S, R7W, W.M. DOUGLAS COUNTY, OREGON	
CLIENT:	WEYERHAEUSER COMPANY
DRAWN BY: DWB	BAKER AND ASSOCIATES, SURVEYORS
DATE: 12/05/16	1347 MARKET STREET
FILE: PL320714	SPRINGFIELD, OREGON (541) 343-7243

MAP FILE H173-1

MAP FILE H173-1