

**RECORD OF SURVEY**

LOCATED IN  
NW 1/4 OF SECTION 18 T. 30 S. R. 2 W. W. M.  
DOUGLAS COUNTY, OR

SURVEY FOR: LONE ROCK TIMBERLAND CO.  
P.O. BOX 1127 ROSEBURG, OR 97470  
SURVEY BY: LONE ROCK TIMBER MANAGEMENT COMPANY  
P.O. BOX 1127 ROSEBURG, OR 97470  
TRACT: EVANS DATE: NOV. 2016

Date: 1-3-2017 By: JC  
Map: M172-79  
Narrative:  
Corner Rpt:

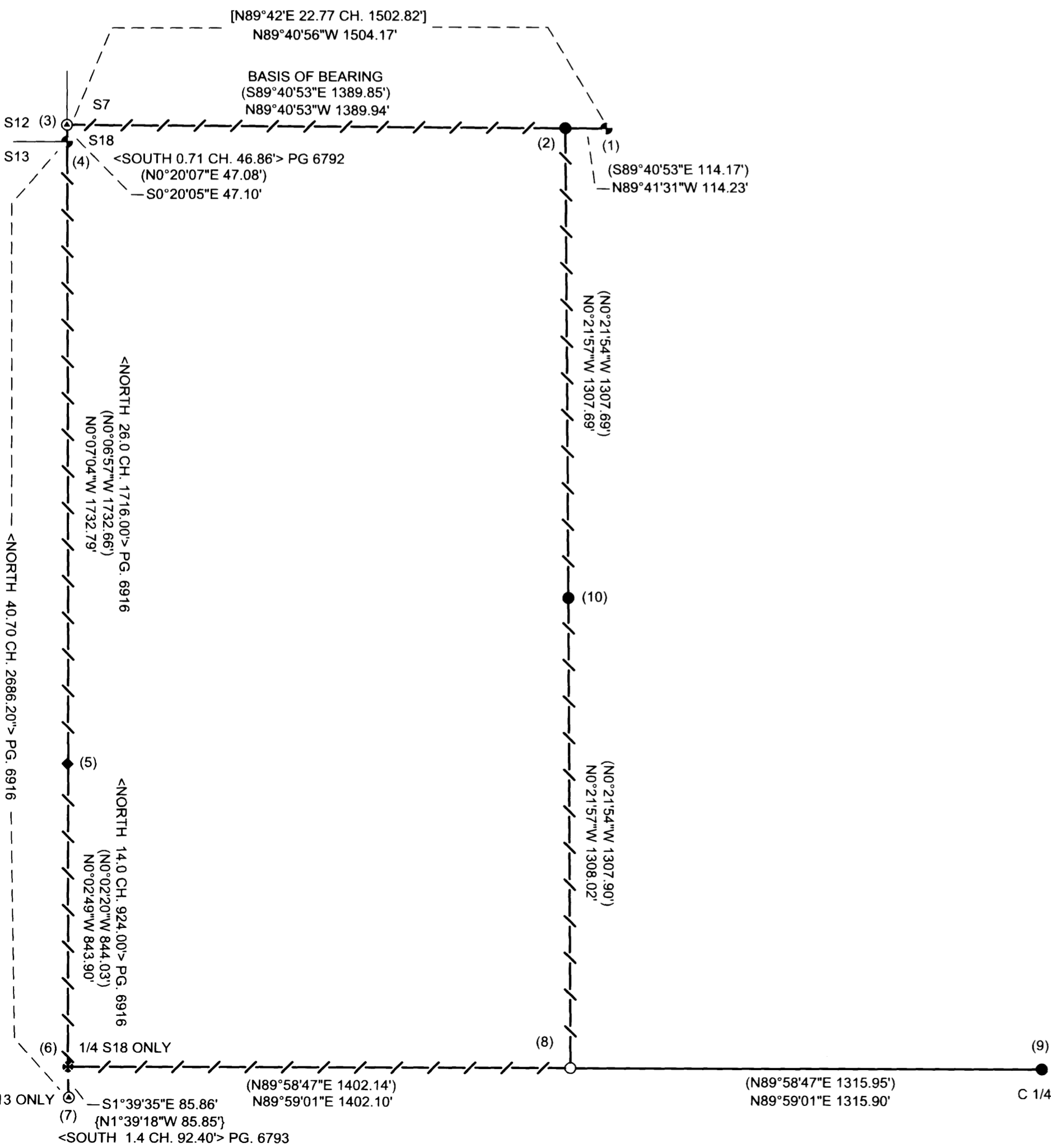
**CORNER INFORMATION:**

DOUGLAS COUNTY  
SURVEYOR

**NARRATIVE:**

THE PURPOSE OF THIS SURVEY IS TO ESTABLISH PROPERTY CORNERS AND PROPERTY LINES FOR TIMBER MANAGEMENT PURPOSES. WE INITIATED THIS SURVEY NEAR THE STUMP OF AN ORIGINAL LINE TREE ON THE SECTION LINE BETWEEN SECTIONS 13 AND 18 IDENTIFIED BY GEISLER ON M100-78. WE RAN A RANDOM CLOSED LOOP TRAVERSE AROUND THE WEST 1/4 OF THE NORTHWEST 1/4 OF SECTION 18 AND AN OPEN TRAVERSE 1/4 MILE ALONG THE EAST-WEST CENTERLINE OF SECTION 18 TO THE CENTER 1/4. THE NORTHWEST AND WEST 1/4 CORNERS OF SECTION 18 AND THE NORTHEAST CORNER OF SECTION 13 ARE MONUMENTS THAT WERE SET FROM PERPETUATED ORIGINAL EVIDENCE THAT WE USE AS OUR PRIMARY CONTROL ON THE NORTH AND WEST LINE OF SECTION 18. THE WEST 1/16 AND CENTER 1/4 MONUMENTS WERE SET BY GEISLER IN 1986 (MAP 100-78), WHICH WE ALSO USE AS CONTROL FOR THE SUBDIVISION OF THE NW QUARTER OF SECTION 18. WE FOUND AN ORIGINAL LINE TREE STUMP FIRST FOUND AND PERPETUATED BY GEISLER FOR WHICH WE FURTHER PERPETUATE WITH IRON RODS WE SET ON THE WEST LINE OF SECTION 18. WE COMPUTED AND SET THE CW1/16 CORNER AT PROPER PROPORTION ON THE CENTERLINE OF THE SECTION AND MARKED THE PROPERTY LINES AS SHOWN ON THIS MAP. THIS SURVEY WAS DONE WITH A NIKON DTM 522 TOTAL STATION WITH GARY ANGIOLET, JOSH FOWLER, IGNACIO ROMAN AND DAN SAILY ASSISTING ME.

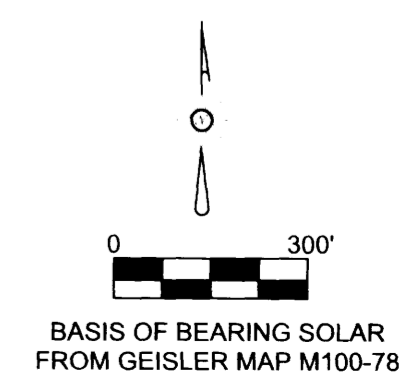
- 1) WEST 1/16 SECTION 7 ONLY FOUND 1970 BLM BCIP PER FIELD NOTES PAGE 14517  
-- 15" FIR SNAG BEARS N15°E 1.6 FEET AS PER RECORD FROM MAP M 100 - 78 HEALED FACE AND TAG  
-- 15" FIR SNAG BEARS N82°W 17.9 FEET AS PER RECORD FROM MAP M 100 - 78 HEALED FACE AND TAG  
-- 18" WHITE FIR BEARS N25°E 55.4 FEET AS PER RECORD FROM MAP M 100-78 HEALED FACE AND TAG  
CORNER LIES ON SOUTHEAST SLOPE APPROX. 50 FEET WEST OF ROCK ROAD
- 2) FOUND WEST 1/16 CORNER FOR SECTION 18 ONLY AN ALUMINUM CAP SET BY GEISLER IN MAP M 100 - 78  
-- 20" DOUGLAS FIR BEARS S57 1/2°E 13.4 FEET (RECORD S58°E 13.9 FEET) HEALED FACE AND TAG  
-- 24" DOUGLAS FIR BEARS N84°W 10.3 FEET (UNRECORDED TREE WITH TAG THAT READS S70°E 10.0 FEET)  
-- 3/4" IRON ROD BEARS N87°35'48"W 36.36 FEET (RECORD N87°36'57" W 36.37 FEET)  
LOGGED UNIT TO SOUTH AND A METAL FENCE POST APPROX. 1.0 FEET SOUTH OF CORNER.
- 3) FOUND COUNTY 1963 BCIP CLOSING CORNER FOR SECTIONS 7 AND 18 T. 30 S. R. 2 W. GCDB 100500  
-- 3/4" IRON ROD BEARS N89°45'29"W 2.46 FEET (RECORD FROM MAP M100-78 IS N89°42'W 2.64 FEET)  
-- 20" DOUGLAS FIR BEARS S60 1/4°E 45.4 FEET (RECORD S60 1/4°E 45.54 FEET) HEALED FACE AND TAG  
-- 19" DOUGLAS FIR BEARS N56°E 58.6 FEET (RECORD N56 1/2°E 58.74 FEET) HEALED FACE AND TAG  
CORNER IS APPROX. 1.0 FEET ABOVE GROUND LEVEL AND IS APPROX. 60 FEET NORTH OF DRAW.  
METAL U-POST APPROX. 0.5 FEET NORTH OF CORNER.
- 4) FOUND 1970 BLM BCIP SECTION CORNER FOR SECTIONS 12 AND 13 T. 30 S. R. 3 W. GCDB 700500  
-- 21" CEDAR STUMP BEARS S50°W 17.4 FEET (RECORD S49°W 17.6 FEET) VISIBLE SCRIBING AND TAG  
-- 22" CEDAR BEARS N34 3/4°W 11.9 FEET (RECORD N37 1/2°W 11.7 FEET) VISIBLE SCRIBING AND TAG  
-- 8" DOUGLAS FIR BEARS S86 1/4°W 38.2 FEET (RECORD S86°W 38.2 FEET) VISIBLE SCRIBING AND TAG  
CORNER IS ON NORTH EDGE OF DRAW WITH METAL FENCE POST APPROX. N45°W 0.2 FEET.
- 5) FOUND ORIGINAL LINE TREE STUMP AS CALLED IN GEISLER MAP M 100 78 COULD NOT FIND ANY EVIDENCE OF 12" SPIKE SET 5/8" X 40" IRON ROD WITH ORANGE PLASTIC CAP IN CENTER OF STUMP  
-- SET 5/8" X 40" IRON ROD ON SECTION LINE WITH ORANGE PLASTIC CAP MARKED LONE ROCK TIMBER PLS 2291 BEARS N0°07'12"W 20.00 FEET. PUT U-POST APPROX. 1.0 FEET NORTH OF REFERENCE ROD  
-- SET 5/8" X 40" IRON ROD ON SECTION LINE WITH ORANGE PLASTIC CAP MARKED LONE ROCK TIMBER PLS 2291 BEARS S0°02' 58"E 20.0 FEET. PUT U-POST APPROX. 1.0 FEET SOUTH OF REFERENCE ROD  
-- FOUND UPROOT RECORD 9" FIR AS CALLED FOR BY GEISLER IN MAP M 100 - 78
- 6) FOUND 1 1/4" IRON PIPE FOR THE WEST 1/4 CORNER OF SECTION 18 ONLY WITH SCRIBED YEW POST ALONGSIDE GCDB 100440  
-- 12" CEDAR BEARS N61 1/2°E 29.6 FEET (RECORD N62°E 29.6 FEET) HEALED FACE AND TAG  
-- 13" DOUGLAS FIR BEARS S19 3/4°E 14.2 FEET (RECORD S20°E 14.0 FEET) HEALED FACE AND TAG  
-- FOUND BADLY DECAYED SUGAR PINE STUMP AT RECORD S 27°E 17.2 FEET. SOME VISIBLE SCRIBING. INDETERMINATE DIAMETER APPROXIMATELY 1 FOOT TALL.  
-- FOUND BADLY DECAYED DOUGLAS FIR STUMP AT RECORD N 66°E 31.7 FEET. AX MARKS VISIBLE IN BARK NEAR ROTTEN FACE. INDETERMINATE DIAMETER APPROXIMATELY 4 FEET TALL.  
CORNER IS 0.6 FEET ABOVE GROUND AND APPROX. 50 FEET WEST OF DRAW. METAL U-POST IS APPROX. 3.0 FEET EAST OF CORNER
- 7) FOUND 1962 COUNTY CAP FOR THE EAST 1/4 CORNER OF SECTION 13 ONLY GCDB 700440  
-- 41" DOUGLAS FIR AT RECORD BEARING S70°W. WE MEASURE 15.8 FEET TO SIDE (RECORD 14.5 FEET) HEALED FACE. WE TAG.  
-- 25" DOUGLAS FIR AT RECORD BEARING N71°W. WE MEASURE 19.2 FEET TO SIDE (RECORD 17.8 FEET) HEALED FACE AND TAG  
-- 16" WHITE FIR AT RECORD N 4°E. WE MEASURE 32.7 FEET TO SIDE (RECORD 31.8 FEET) HEALED FACE AND TAG.  
CORNER IS 0.8 FEET ABOVE GROUND AND APPROX. 50 FEET WEST OF DRAW. METAL U-POST BESIDE CORNER.
- 8) SET 5/8" X 40" IRON ROD WITH 2 1/2" ALUMINUM CAP MARKED LONE ROCK TIMBER CW 1/16 S18 2016 PLS 2291  
-- UNRECORDED AXLE BEARS S10°30'33" E 54.25 FEET  
-- 15" DOUGLAS FIR BEARS N10 3/4°W 9.1 FEET WE SCRIBE CW 1/16 S18 BT AND TAG TREE  
-- 15" DOUGLAS FIR BEARS S73 1/2°E 25.4 FEET WE SCRIBE CW 1/16 S18 BT AND TAG TREE  
CORNER IS 0.3 FEET ABOVE GROUND ON AN EAST FACING SLOPE. METAL U-POST IS APPROX. 1.0 FEET NORTH OF CORNER
- 9) THE CENTER 1/4 CORNER FOR SECTION 18 IS AN ALUMINUM CAP PER GEISLER MAP M 100 - 78 GCDB 140440  
-- 1 1/4" IRON PIPE BEARS N0°24'59" E 34.43 FEET (RECORD N0°30'34"E 34.5 FEET)  
-- 12" DOUGLAS FIR BEARS N10 1/4°E 20.2 FEET (RECORD N14°E 20.8 FEET) HEALED FACE AND TAG  
-- 7" DOUGLAS FIR BEARS S77 1/2°W 10.1 FEET (RECORD S78°W 10.2 FEET) HEALED FACE AND TAG  
CORNER IS APPROX. 1.0 FEET SOUTH OF FENCE CORNER. FENCE RUNS EAST AND NORTH.  
METAL U-POST APPROX. 2 FEET EAST OF CORNER.
- 10) THE NORTHWEST 1/16 CORNER FOR SECTION 18 IS AN ALUMINUM CAP PER GEISLER MAP M 100 - 78  
-- 9" DOUGLAS FIR BEARS N62 1/4°E 20.2 FEET (RECORD N65°E 20.3 FEET) HEALED FACE AND TAG  
-- 11" DOUGLAS FIR BEARS N35 1/4°E 26.9 FEET (RECORD N32°E 26.9 FEET) HEALED FACE AND TAG  
CORNER IS AT GROUND LEVEL AND AT SOUTHWEST CORNER OF RECENT CLEARCUT.  
METAL FENCE POST APPROX. 2.5 FEET NORTHWEST OF CORNER



**LEGEND**

- FOUND ALUMINUM CAPS SET BY GEISLER IN MAP M 100 - 78
- ✱ 1 1/4" COUNTY IRON PIPE PER CORNER RENEWAL GCDB 100440
- ⊕ 1970 BLM BRASS CAP
- ⊙ 1962 & 1963 COUNTY CAPS
- SET 5/8" X 40" IRON ROD WITH ALUMINUM CAP
- ◆ SET 5/8" X 40" IRON ROD WITH ORANGE PLASTIC CAP IN CENTER OF 35" STUMP AS RECORD LINE TREE
- ( ) GEISLER 1986 SURVEY M 100 - 78 FILED IN DOUGLAS COUNTY SURVEYORS OFFICE
- [ ] 1970 BLM FIELD NOTES PAGES 14516 -14517 FILED IN DOUGLAS COUNTY SURVEYORS OFFICE
- < > 1909 GLO FIELD NOTES FILED IN DOUGLAS COUNTY SURVEYORS OFFICE
- { } 2006 HOSTETTER SURVEY M 150 - 49 FILED IN DOUGLAS COUNTY SURVEYORS OFFICE
- - - LINES BLAZED, PAINTED, RIBBONED, AND TAGGED
- — — PROJECTED LINES

REGISTERED  
PROFESSIONAL  
LAND SURVEYOR  
*Ken W. Hoffine*  
OREGON  
JULY 16, 1987  
KEN W. HOFFINE  
2291  
EXPIRES: 6/30/2017



MAP FILE M172-79

MAP FILE M172-79