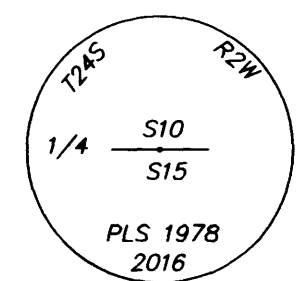


MAP FILE M172-71

FILED  
Date: 12-27-2016 By: JC  
This survey consists of:  
Map: M172-71  
Narrative:  
Corner Rpt:  
DOUGLAS COUNTY SURVEYOR

# BOUNDARY SURVEY IN NORTHWEST 1/4 AND SOUTHWEST 1/4 OF SECTION 15, T24S, R2W, W.M. DOUGLAS COUNTY, OREGON OCTOBER 21, 2016

SCALE 1" = 400'



## ① 1/4 CORNER 10 & 15, T24S, R2W W.M.

FOUND: 12"x6"x10" BASALT STONE MARKED "1/4" ON TOP  
68" FIR STUMP, N80°E, 43.0' TO "W" NAIL IN FACE - 1964 WEYERHAEUSER BEARING TREE  
ROTTEN HEMLOCK STUMP, S6°W, 21.8' TO CENTER - ORIGINAL BEARING TREE  
ROTTEN HEMLOCK STUMP, N9°W, 23.1' TO CENTER - ORIGINAL BEARING TREE  
(STONE PLACED ALONGSIDE NEW CORNER MONUMENT)

SET: 5/8" X 36" REBAR WITH 2 1/2" ALUMINUM CAP IN PLACE OF STONE  
MARKED: 11" FIR, N35°E, 6.1' TO SPIKE SIDE/CENTER-SCRIBED "1/4S10 BT"  
16" FIR, S24°E, 13.5' TO SPIKE SIDE/CENTER-SCRIBED "1/4S15 BT"  
14" FIR, S36°W, 3.4' TO SPIKE SIDE/CENTER-SCRIBED "1/4S15 BT"  
13" FIR, N27°W, 10.6' TO SPIKE SIDE/CENTER-SCRIBED "1/4S10 BT"

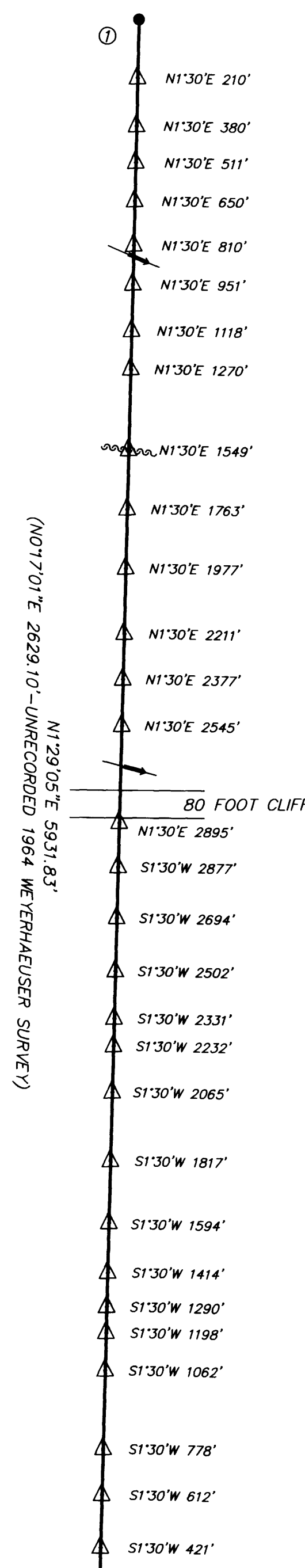
## ② 1/4 CORNER 15 & 22, T24S, R2W W.M.

FOUND: 2 1/2" DOUGLAS COUNTY BRASS CAP "1969"  
VINE MAPLE CLUMP, N5°E, 23.8' TO CENTER PER 1894 GLO SURVEY  
64" FIR, N82°E, 38.4' (RECORD=37.4')-WEYERHAEUSER BEARING TREE  
22" ROTTEN HEMLOCK STUMP, S85°E, 66.0' TO CENTER-M6-45 BEARING TREE  
(RECORD = S85 1/2°E, 65.2')  
22" ROTTEN HEMLOCK STUMP, S85°E, 66.0' TO CENTER-M6-45 BEARING TREE  
(RECORD = N 1/2°W, 24.2')

MARKED: 13" FIR, S22°E, 18.0' TO SPIKE SIDE/CENTER-SCRIBED "1/4S22 BT"  
17" FIR, S78°W, 8.7' TO SPIKE SIDE/CENTER-SCRIBED "1/4S15 BT"

## ③ SECTION CORNER 15, 16, 21, 22

FOUND: 5/8" REBAR WITH RED PLASTIC CAP "NORTHSTAR SURVEYING" PER M160-24  
60" FIR STUMP, N12°E, 27.3' TO CENTER-ORIGINAL BEARING TREE [RECORD=N14°E 42 LINKS]  
13" CEDAR, N70°E (RECORD=N80°E), 9.3' TO CENTER-M160-24 BEARING TREE  
14" FIR, S43°E, 30.2' TO CENTER-M160-24 BEARING TREE  
50" FIR STUMP, S34°E, 23.2' TO "W" NAIL IN FACE-ORIGINAL BEARING TREE [RECORD=40 LINKS]  
13" HEMLOCK, S21°W, 11.5' TO CENTER-M160-24 BEARING TREE  
42" FIR STUMP, S25°W, 43.1' TO CENTER-ORIGINAL BEARING TREE [RECORD=66 LINKS]  
18" FIR, N55°W, 21.8' TO CENTER-M160-24 BEARING TREE



### -NARRATIVE-

THIS SURVEY WAS MADE IN SEPTEMBER AND OCTOBER, 2016 BY DANIEL W. BAKER OF BAKER AND ASSOCIATES SURVEYORS, INC. FOR WEYERHAEUSER COMPANY IN THE NORTHEAST 1/4 THE SOUTHWEST 1/4 OF SECTION 10, TOWNSHIP 24 SOUTH, RANGE 2 WEST, WILLAMETTE MERIDIAN. THE PURPOSE OF THIS SURVEY WAS TO LOCATE AND MARK THE WEST 1/2 OF THE SECTION LINE COMMON TO SECTIONS 15 AND 22, TOWNSHIP 24 SOUTH, RANGE 2 WEST, WILLAMETTE MERIDIAN. THE BASIS OF BEARING FOR THIS SURVEY WAS THE WEST 1/2 OF THE SECTION LINE COMMON TO SECTIONS 15 AND 22 PER THE 1894 GENERAL LAND OFFICE SURVEY. THE 1/4 CORNER COMMON TO SECTIONS 15 AND 22 WAS PERPETUATED ORIGINAL CORNER POSITION, MONUMENTED BY A DOUGLAS COUNTY BRASS CAP, SET IN 1970. THE SOUTHWEST SECTION CORNER WAS REMONUMENTED WITH A 5/8" REBAR AND RED PLASTIC CAP MARKED "NORTHSTAR SURVEYING" AND NOTED ON M160-24. THE 1/4 CORNER COMMON TO SECTIONS 10 AND 15 WAS MONUMENTED WITH THE ORIGINAL GLO BASALT STONE MARKED "1/4". THIS ORIGINAL CORNER WAS REMONUMENTED IN THIS SURVEY WITH A 5/8" X 36" REBAR WITH 2 1/2" ALUMINUM CAP, MARKED AS SHOWN ON THE SURVEY MAP, STONE PLACED ALONGSIDE THE REBAR AND CAP. THE TRUE PROPERTY LINE WAS MARKED BY BLAZING TREES ON EITHER SIDE OF THE TRUE PROPERTY LINE (BLAZES PAINTED ORANGE) AND BY SETTING 5 1/2 FOOT "U" SHAPED METAL POSTS AT RANDOM INTERVALS ALONG THE TRUE PROPERTY LINE. DISTANCES FROM POSTS TO NEAREST CORNER ARE SHOWN ON THE SURVEY MAP.

BASIS OF BEARING: WEST 1/2 OF SOUTH LINE OF SECTION 15, T24S, R2W, WM PER 1894 GLO SURVEY

### LEGEND

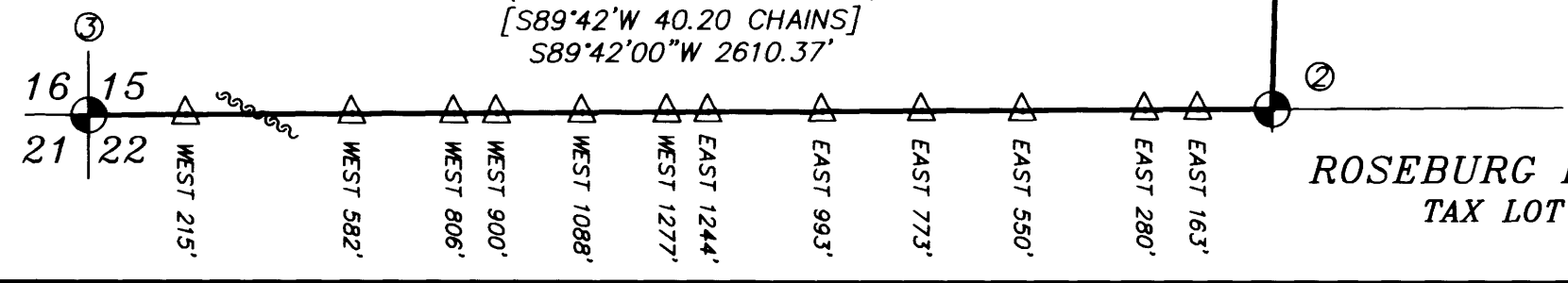
- ⊙ - GOVERNMENT CORNER POSITION (AS NOTED)
- - CORNER SET - 5/8" X 36" REBAR & 2 1/2" ALUMINUM CAP MARKED AS SHOWN
- - BLAZED AND PAINTED PROPERTY LINE
- [ ] - RECORD DATA - 1894 GLO SURVEY
- ( ) - RECORD DATA - M6-45
- △ - 5 1/2 FOOT STEEL POSTS SET ON PROPERTY LINE (DISTANCES AND CARDINAL DIRECTION ARE FROM THE NEAREST CORNER I.E. = SOUTH 123')
- ↗ - CREEK
- ⋯ - RIDGE

REGISTERED PROFESSIONAL LAND SURVEYOR  
DANIEL W. BAKER  
JULY 16, 1982  
1978

EXPIRES 12/31/17

I CERTIFY THAT THIS MAP WAS PREPARED USING A HP51645A INK CARTRIDGE ON JPC-4M2 DOUBLE MATTE FILM

-BASIS OF BEARING-  
(S88°43'W 2610.1'-M6-45)  
[S89°42'W 40.20 CHAINS]  
S89°42'00"W 2610.37'



BOUNDARY SURVEY IN NW 1/4 AND SW 1/4 OF SECTION 15, T24S, R2W, W.M. DOUGLAS COUNTY, OREGON	
CLIENT:	WEYERHAEUSER COMPANY
DRAWN BY: DWB	BAKER AND ASSOCIATES, SURVEYORS
DATE: 10/21/16	1347 MARKET STREET
FILE: PL240215-CL	SPRINGFIELD, OREGON (541) 343-7243

MAP FILE M172-71