

RECORD OF SURVEY

LOCATED IN

SE 1/4 OF SECTION 8, T.26 S.R. 2 W., W. M.
DOUGLAS COUNTY, OR.

FOR: LONE ROCK LRTI - 2
P.O. BOX 1127 ROSEBURG, OR. 97470
BY: LONE ROCK TIMBER MANAGEMENT COMPANY
P.O. BOX 1127 ROSEBURG, OR. 97470
TRACT: F26-2-8 DATE: MAY 2016

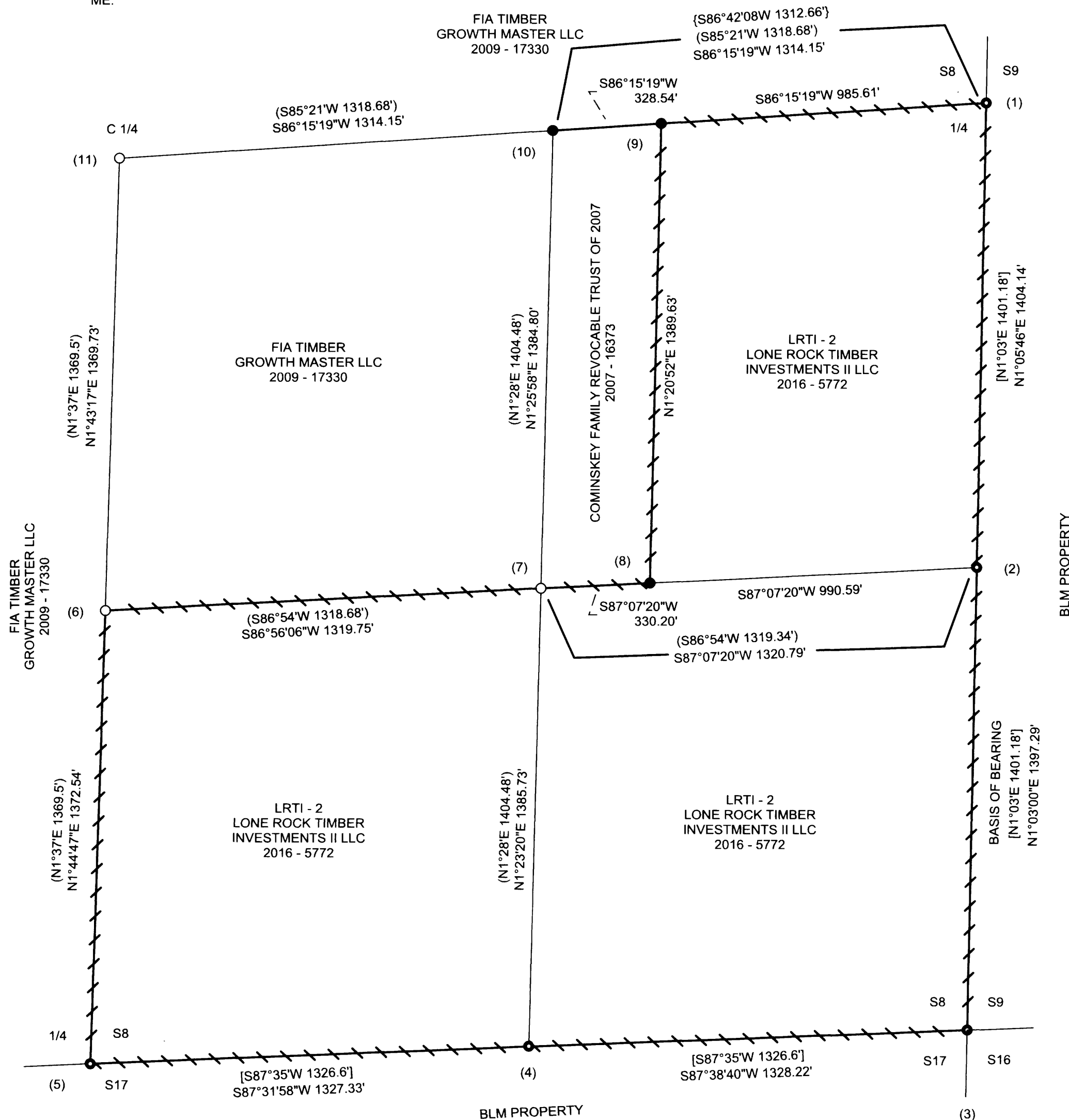
Date: 6-15-2016 By: JC
This survey consists of:
Map: M172-7
Narrative:
Corner Rpt: DOUGLAS COUNTY SURVEYOR

NARRATIVE:

THE PURPOSE OF THIS SURVEY IS TO ESTABLISH PROPERTY CORNERS AND PROPERTY LINES FOR TIMBER MANAGEMENT PURPOSES. 1959 BLM SURVEYED AROUND SECTION 8 SETTING BRASS CAPS AT EACH SECTION CORNER AND 1/4 CORNER EXCEPT THE WEST 1/4 AND SE CORNER OF SECTION 8 WHICH ARE 1918 BRASS CAPS SET FROM ORIGINAL EVIDENCE. 1960 RAMSEY SUBDIVIDED THE SOUTHEAST 1/4 OF SECTION 8 SETTING THE CENTER 1/4 AND THE 1/16 CORNERS PERTAINING TO THE SOUTHEAST 1/4. 1975 BAUGHMAN SUBDIVIDED THE NORTHWEST 1/4 OF SECTION 8 ACCEPTING AND USING RAMSEY'S CENTER 1/4 MONUMENT. 1985 PEEL BAKER SURVEYED IN THE NORTHEAST 1/4 OF SECTION 8 SETTING THE NORTH 1/16 BETWEEN S8/S9, AND ACCEPTED BAUGHMAN'S CENTER NORTH 1/16 AND RAMSEY CENTER EAST 1/16 TO ESTABLISH AND MARK PROPERTY LINES IN THE NORTHEAST 1/4. LONE ROCK INITIATED OUR SURVEY AT THE SOUTH 1/16 BETWEEN S8/S9, AND THEN WE RAN A RANDOM CLOSED LOOP TRAVERSE AROUND AND NEAR ITS PROPERTY LINES AS SHOWN HEREON TO ESTABLISH, MARK AND POST THE PROPERTY LINES. WE THEN RAN RANDOM TRAVERSES TO GPS CONTROL TO TIE INTO RAMSEY'S CENTER 1/4 MONUMENT AND CENTER EAST 1/16 CORNER BEARING TREES. RAMSEY'S CENTER EAST 1/16 MONUMENT WE FOUND OUT OF PLACE, DISTURBED BY ROAD CONSTRUCTION. THE POSITION WE CALCULATED FROM RECORD FOR THE CENTER EAST 1/16 FROM RAMSEY'S BEARING TREE STUMPS WOULD HAVE PUT THE CORNER OVER 12 FEET OUT OF POSITION FROM PROPER PROPORTIONATE POSITION BETWEEN RAMSEY'S CENTER 1/4 AND EAST 1/4 CORNER MONUMENTS. WE RESET THE CENTER EAST 1/16 AT OUR PROPORTIONATE CALCULATED POSITION, AND ACCEPTED RAMSEY'S UNDISTURBED CENTER SOUTH 1/16 AND SOUTHEAST 1/16 CORNER MONUMENTS AS WE FOUND THEM. WE THEN COMPUTED AND SET THE CENTER WEST-EAST-SOUTHEAST 1/256 AND CENTER WEST-EAST-EAST 1/256 CORNERS AT PROPORTIONAL POSITIONS. THIS SURVEY WAS DONE WITH A NIKON DTM 522 TOTAL STATION AND TRIMBLE 6000 CENTIMETER GRADE GPS SYSTEM WITH GARY ANGIOLET, JOSH FOWLER, KADEN MCFARLAND AND DAN SAILY ASSISTING ME.

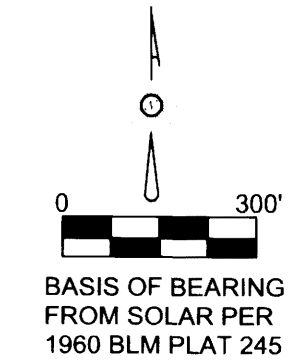
CORNER INFORMATION:

- 1) THE QUARTER CORNER BETWEEN SECTIONS 8 AND 9 GCDB 300540
FOUND 1959 BLM BRASS CAP 0.8 FEET ABOVE GROUND
-- 12" DOUGLAS FIR BEARS N77°E 17.9 FEET (RECORD N75°E 19.14 FEET) HEALED FACE AND BLM TAG
-- 36" DOUGLAS FIR BEARS N68 1/4°W 29.9 FEET (RECORD N70°W 29.37 FEET) HEALED FACE AND BLM TAG
CORNER LIES ON NORTH FACING SLOPE IN MOUND OF STONES
- 2) THE SOUTH 1/16TH CORNER BETWEEN SECTIONS 8 AND 9 GCDB 300520
FOUND 1959 BLM BRASS CAP 0.2 FEET ABOVE GROUND
-- 25" DOUGLAS FIR BEARS S60 1/2°E 21.4 FEET (RECORD S61 1/2°E 21.78 FEET) HEALED FACE AND TAG
-- 12" FIR SNAG BEARS S62 1/2°W 5.6 FEET (RECORD S58 1/2°W 5.61 FEET) HEALED FACE AND BLM TAG
-- 8" DOUGLAS FIR BEARS S71 1/2°W 25.2 FEET WE SCRIBE S 1/16 S8 BT AND TAG TREE
CORNER LIES ON SOUTHEAST SLOPE WITH LARGE BLM TIMBER TO EAST.
- 3) THE SOUTHEAST SECTION CORNER FOR SECTION 8 GCDB 300500
FOUND 1918 USGLO BRASS CAP 1.0 FEET ABOVE GROUND
-- 67" DOUGLAS FIR BEARS N41°E 19.4 FEET (RECORD N40°E 18.48 FEET) HEALED FACE AND BLM TAG
-- 38" DOUGLAS FIR BEARS S20 1/4°E 7.7 FEET (RECORD S20°E 6.6 FEET) HEALED FACE AND BLM TAG
-- 53" DOUGLAS FIR BEARS S54°W 25.4 FEET (RECORD S55°W 25.74 FEET) HEALED FACE AND BLM TAG
-- 14" CHINQUAPIN BEARS N74 1/4°W 10.55 FEET (RECORD N75 1/4°W 10.56 FEET) HEALED FACE AND BLM TAG
CORNER LIES ON EAST FACING SLOPE IN HEAVY HUCKLEBERRY BRUSH
- 4) THE EAST 1/16 TH CORNER BETWEEN SECTIONS 8 AND 17 GCDB 260500
FOUND 1959 BLM BRASS CAP 0.3 FEET ABOVE GROUND
-- 40" DOUGLAS FIR BEARS S52°E 86.4 FEET (RECORD S51 1/4°E 87.12 FEET) HEALED FACE AND BLM TAG
-- ROTTEN FIR STUMP BEARS N84°E 49.7 FEET (RECORD N84 1/2°E 50.16 FEET) NO VISIBLE MARKS
-- 13" DOUGLAS FIR BEARS N72 1/2°E 16.3 FEET WE SCRIBE E1/16 S8 BT AND TAG TREE
CORNER LIES ON SOUTHWEST SLOPE APPROX. 75 FEET WEST OF ROAD
- 5) THE QUARTER CORNER BETWEEN SECTIONS 8 AND 17 GCDB 240500
FOUND 1959 BLM BRASS CAP 0.4 FEET ABOVE GROUND
-- 20" DOUGLAS FIR BEARS S41 1/4°E 22.11 FEET (RECORD S41°E 22.44 FEET) HEALED FACE AND BLM TAG
-- 28" DOUGLAS FIR BEARS N57°W 10.3 FEET (RECORD N53 1/2°W 11.22 FEET) HEALED FACE AND BLM TAG
CORNER LIES ON STEEP SOUTH FACING SLOPE APPROX. 100 FEET SOUTH OF OLD ROADWAY
- 6) THE CENTER SOUTH 1/16 TH CORNER FOR SECTION 8 GCDB 240520
FOUND 1" IRON PIPE 0.2 FEET ABOVE GROUND PER SURVEY CS 51/86
-- ROTTEN FIR STUMP BEARS N10 1/4°W 19.6 FEET (RECORD N10°W 19.8 FEET) VISIBLE SCRIBING
-- ROTTEN FIR STUMP BEARS S79 1/4°W 5.9 FEET (RECORD S70°W 5.28 FEET) VISIBLE SCRIBING
-- 9" DOUGLAS FIR BEARS N23 3/4°W 11.8 FEET WE SCRIBE CS 1/16 S8 BT AND TAGGED TREE
-- 15" DOUGLAS FIR BEARS N49°E 23.5 FEET WE SCRIBE CS 1/16 S8 BT AND TAGGED TREE
CORNER LIES ON STEEP WEST FACING SLOPE
- 7) THE SOUTHEAST 1/16 TH CORNER FOR SECTION 8 GCDB 260520
FOUND 1" IRON PIPE 0.6 FEET ABOVE GROUND PER SURVEY CS 51/86
-- 26" DOUGLAS FIR BEARS N5 1/4°W 27.5 FEET (RECORD N5°W 27.06 FEET) HEALED FACE AND TAG
-- 8" DOUGLAS FIR BEARS N52 1/2°W 15.5 FEET WE SCRIBE SE 1/16 S8 BT AND TAG TREE
CORNER LIES ON WEST SIDE OF MAIN RIDGE.
- 8) THE CENTER WEST EAST SOUTHEAST 1/256 CORNER FOR SECTION 8
SET 5/8" X 40" IRON ROD WITH 2 1/2" ALUMINUM CAP MARKED LONE ROCK TIMBER S8 CW E SE 1/256 2016 PLS 2291
-- 18" DOUGLAS FIR BEARS S23°W 16.2 FEET WE SCRIBE BT AND TAG TREE
-- 17" DOUGLAS FIR BEARS N57 1/2°E 33.7 FEET WE SCRIBE BT AND TAG TREE
CORNER LIES ON SOUTHEAST SLOPE APPROX. 80 FEET S45°E FROM PROPOSED 2016 NEW ROAD CONSTRUCTION. WE PUT METAL U - POST 0.5 FEET NORTH OF CORNER.
- 9) THE CENTER WEST EAST EAST 1/256 CORNER FOR SECTION 8
SET 5/8" X 40" IRON ROD WITH 2 1/2" ALUMINUM CAP MARKED LONE ROCK TIMBER S8 CW E E 1/256 2016 PLS 2291
-- 13" DOUGLAS FIR BEARS N81 1/4°E 8.4 FEET WE SCRIBE BT AND TAG TREE
-- 15" DOUGLAS FIR BEARS S1 1/4°E 28.3 FEET WE SCRIBE BT AND TAG TREE
CORNER IS 0.2 FEET ABOVE GROUND ON SOUTH FACING SLOPE. WE PUT METAL U - POST APPROX. 0.5 FEET NORTH OF CORNER.
- 10) THE CENTER EAST 1/16 TH CORNER FOR SECTION 8 GCDB 260540
SET 5/8" X 40" IRON ROD WITH 2 1/2" ALUMINUM CAP MARKED LONE ROCK TIMBER CE 1/16 S8 2016 PLS 2291
-- 14" DOUGLAS FIR BEARS N8 1/4°E 9.3 FEET WE SCRIBE CE 1/16 S8 BT AND TAG TREE
-- 12" DOUGLAS FIR BEARS S11 1/2°W 39.0 FEET WE SCRIBE CE 1/16 S8 BT AND TAG TREE
FOUND RAMSEY BEARING TREE STUMPS WITH IRON PIPE PUSHED OUT OF POSITION. WE RESET CORNER AT PROPORTIONATE DISTANCE. CORNER LIES AT NORTH EDGE OF THREE WAY ROAD JUNCTION. WE SET CORNER 0.1 FEET BELOW THE ROAD SURFACE AND PUT A METAL U - POST APPROX. 5.0 FEET NORTH OF CORNER.
- 11) THE CENTER QUARTER CORNER FOR SECTION 8 GCDB 240540
FOUND 1 1/2" IRON PIPE PER SURVEY CS 51/86
-- 62" FIR STUMP BEARS N89 1/2°E 19.3 FEET (RECORD S88 °E 17.6 FEET) WEYCO TAG
-- 30" FIR STUMP BEARS N61 1/2°E 24.1 FEET WEYCO TAG AND MAG NAIL TAG READS
S60 1/2°W 26.3 FEET NO RECORD
-- 12" DOUGLAS FIR BEARS N28 3/4°E 27.7 FEET WE SCRIBE C1/4 S8 BT AND TAG TREE
-- 6" DOUGLAS FIR BEARS N80°W 13.7 FEET WE SCRIBE C1/4 S8 BT AND TAG TREE
-- 13" DOUGLAS FIR BEARS N89 1/2°E 19.3 FEET WE SCRIBE C1/4 S8 BT AND TAG TREE
-- 11" DOUGLAS FIR BEARS S31 1/4°W 34.4 FEET WE SCRIBE C1/4 S8 BT AND TAG TREE
CORNER LIES APPROX. 65 FEET WEST OF UNMAINTAINED ROCK ROAD



LEGEND	
●	FOUND 1959 BLM BCIP'S & 1918 US GLO BCIP
○	FOUND IRON PIPES SET BY RAMSEY IN CS 51/86
●	SET 5/8" X 40" IRON ROD WITH 2 1/2" ALUMINUM CAP
[]	RECORD FROM 1960 BLM PLAT 245
()	RECORD FROM 1960 RAMSEY SURVEY CS 51/86
{ }	1985 BAKER SURVEY M99-63

REGISTERED PROFESSIONAL LAND SURVEYOR
Ken W. Hoffine
OREGON
JULY 16, 1985
KEN W. HOFFINE
2291
EXPIRES: 6/30/2017



MAP FILE M172-7

MAP FILE M172-7