

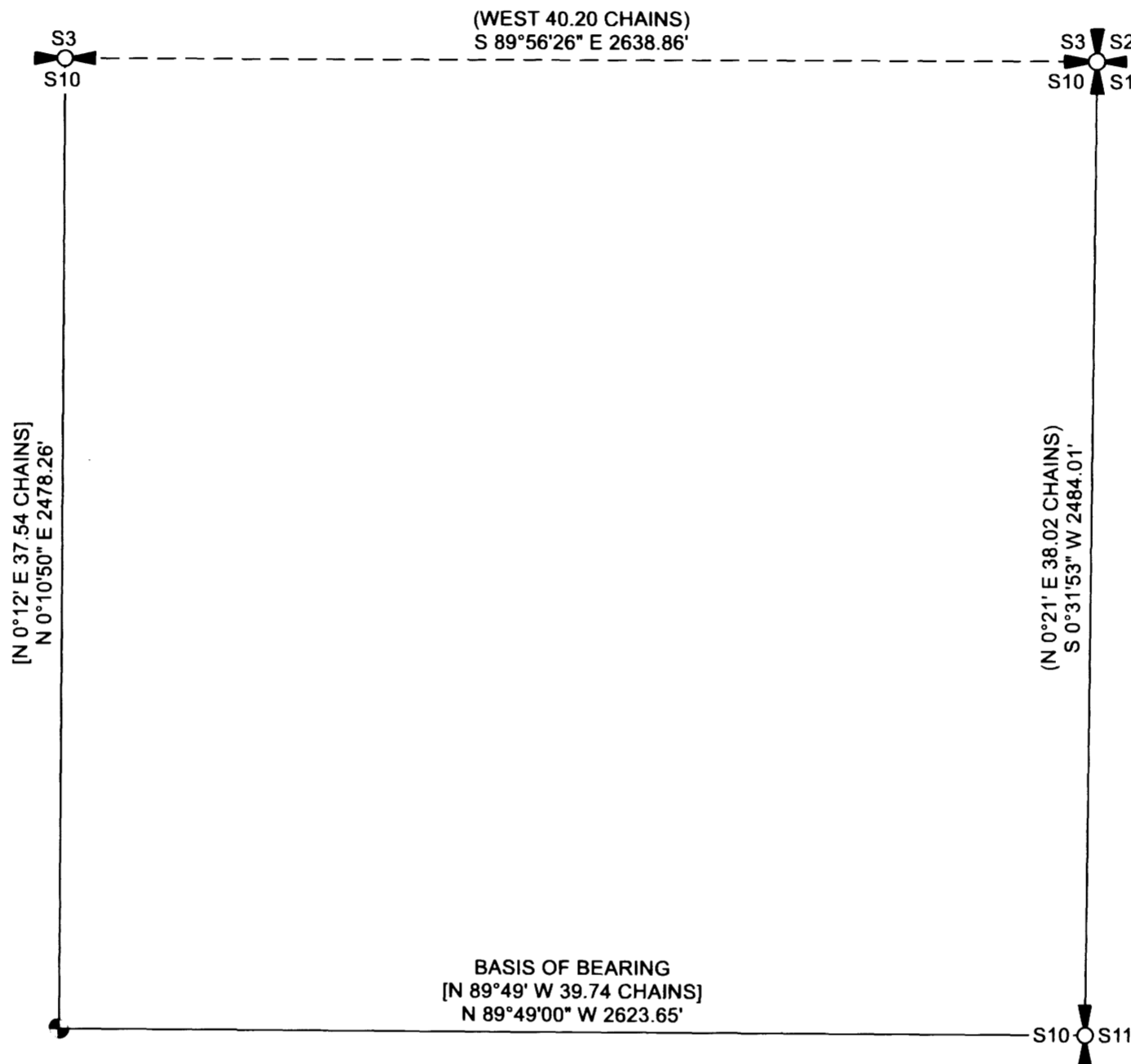
RECORD OF SURVEY
FOR: OXBOW TIMBER 1 LLC
NE1/4, SECTION 10, T.20 S., R.9 W, W.M.
DOUGLAS COUNTY, OREGON
4 OCTOBER 2016

FILED
DATE: 12-14-2016 BY: JC
THIS SURVEY CONSISTS OF:
MAP: M172-65
NARRATIVE:
CORNER RPT:
DOUGLAS COUNTY
SURVEYOR



1/4 CORNER SECTIONS 3, 10
FOUND GLO BRASS CAP DATED 1921
WITH THE FOLLOWING ACCESSORIES:
58" D. FIR BEARS S 41-1/2° W 25.1' - HEALED FACE
44" D. FIR BEARS S 36° W 33.7' - HEALED FACE
34" D. FIR STUMP BEARS N 13° E 47.7' TO RR SPIKE IN TOP
13" D. FIR BEARS N 7-1/4° E 45.5' - SCRIBING VISIBLE (2016 BLM)
ALUMINUM POST ADJACENT TO CORNER

SECTION CORNER SECTIONS 2, 3, 10, 11
FOUND GLO BRASS CAP DATED 1921
WITH THE FOLLOWING ACCESSORIES:
5" CHINQUAPIN BEARS N 78° E 12.8' - BARK SCRIBE VISIBLE
13" D. FIR BEARS S 2-1/2° E 21.9' - HEALED FACE
18" D. FIR BEARS S 53° W 3.4' - HEALED FACE
7" D. FIR BEARS N 23° W 5.5' - HEALED FACE
2" IRON PIPE WITH CONCRETE CORE ALONGSIDE
1921 GLO CORNER MONUMENT
STEEL POST ADJACENT TO CORNER



CENTER 1/4 CORNER SECTION 10
FOUND BLM BRASS CAP DATED 1984
WITH THE FOLLOWING ACCESSORIES:
17" D. FIR BEARS N 17-1/4° E 79.9' - HEALED FACE
15" MAPLE BEARS N 60-1/2° W 14.9' - HEALED FACE
STEEL POST ADJACENT TO CORNER

1/4 CORNER SECTIONS 10, 11
FOUND GLO BRASS CAP DATED 1954
WITH THE FOLLOWING ACCESSORIES:
24" D. FIR STUMP BEARS S 16-1/2° E 34.3' - NO MARKS
36" D. FIR STUMP BEARS N 50-1/2° W 50.8' - NO MARKS
29" D. FIR STUMP BEARS S 28° E 39.1' - NO MARKS
11" D. FIR BEARS S 55° E 12.4' - HEALED FACE
8" D. FIR BEARS N 51° W 17.4' - HEALED FACE
1" RUSTED IRON PIPE WITH CONCRETE CORE FROM 1921
GLO MONUMENT PROJECTING ALONGSIDE 1954 MONUMENT
ALUMINUM POST ADJACENT TO CORNER

LEGEND

- 1/4 CORNER AS NOTED
- SECTION CORNER AS NOTED
- C1/4 CORNER AS NOTED
- LINE MARKED AS DEFINED IN NARRATIVE
- CALCULATED BEARING AND DISTANCE
- [] 1986 BUREAU OF LAND MANAGEMENT DEPENDENT RESURVEY AND SUBDIVISION OF SECTION 10 RECORD DATA
- () 1922 GENERAL LAND OFFICE RECORD DATA
- GLO GENERAL LAND OFFICE
- CSF COUNTY SURVEY FILE
- BLM BUREAU OF LAND MANAGEMENT

NARRATIVE:

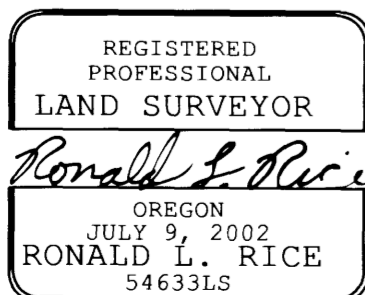
THE PURPOSE OF THIS SURVEY WAS TO MARK TRUE LINE BETWEEN THE CORNERS AS NOTED HEREON IN SECTION 10, TOWNSHIP 20 SOUTH, RANGE 9 WEST, OF THE WILLAMETTE MERIDIAN.

EXISTING CORNERS WERE TIED BY GROUND TRAVERSE AND HELD IN THEIR AS-TIED POSITION FOR THE MARKING OF TRUE LINE.

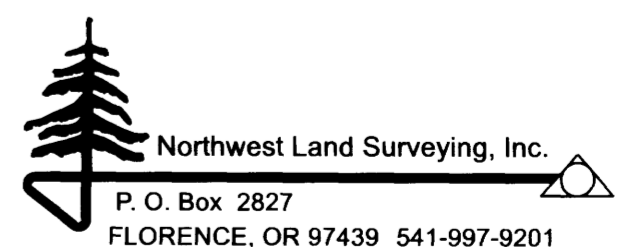
TRUE LINE WAS MARKED WITH RED PAINTED BLAZES, RED FLAGGING AND 5-1/2" GALVANIZED STEEL POST SET AT 200' +/- INTERVALS.

THE BASIS OF BEARING FOR THIS SURVEY WAS THE 1986 BUREAU OF LAND MANAGEMENT DEPENDENT RESURVEY AND SUBDIVISION OF SECTION 10 OF THE WILLAMETTE MERIDIAN.

THIS SURVEY WAS PERFORMED USING A NIKON TOTAL STATION.



EXPIRATION DATE: 12-31-2016



FILE NAME 15-49.TRV		DRAWING RECORD OF SURVEY	
SCALE 400 Ft/in	DATE 10-4-2015	DRAWN BY RLR	
JOB CRANE CRK.	REVISION -----	SHEET 1/1	

This map was drawn with TRAVERSE PC Software