

MAP OF SURVEY

LOCATED in the Section 36, T. 29 S., R. 3 W., W.M.
in Douglas County, Oregon.

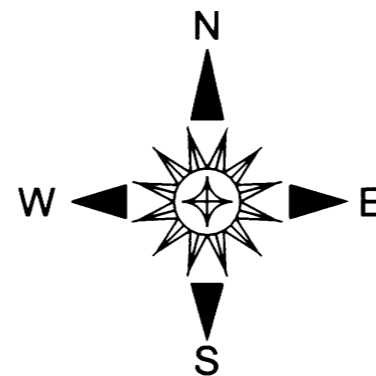
October 31, 2016

FILED
Date: 11-16-2016 By: JC
This survey consists of:
Map: M 172-56
Narrative:
Corner Rpt:

DOUGLAS COUNTY
SURVEYOR

SURVEYED FOR: ROSEBURG RESOURCES CO.
P.O. BOX 1088
ROSEBURG, OREGON 97471

SURVEYED BY: DAVID EDWARDS LAND SURVEYING
P.O. BOX 361
OAKLAND, OREGON 97462
PHONE: (541) 459-0512



EAST 1/4 CORNER 36 ONLY.
FOUND 1971 B.L.M. BRASS CAPPED IRON PIPE.
A 44" DIAM. FIR WITH H.B. BEARS S 15° W, 11.9'
A 15" DIAM. FIR WITH H.B. BEARS N 35° W, 52.1'
A NEW BEARING TREE: 7" DIAM. CEDAR SCRIBED
1/4 S36 BT BEARS S 88° W, 8.9'
A SIX FOOT STEEL POST IS SET 2 FEET NORTH.

CLOSING TOWNSHIP CORNER.
FOUND 1917 G.L.O. BRASS CAPPED IRON PIPE.
A 20" DIAM. HEMLOCK HIGH STUMP WITH H.B.
BEARS N 44° E, 14.5'
A 22" DIAM. HEMLOCK HIGH STUMP WITH H.B.
BEARS S 40 1/2° E, 31.7'
NEW B.T.'S:
A 9" DIAM. CEDAR SCRIBED "T29S R2W S31 BT" BEARS N 35° E, 28.4'
AN 8" DIAM. FIR SCRIBED "T30S R2W S6 BT" BEARS S 35° E, 24.8'
A 6 FOOT STEEL POST IS SET 2 FEET NORTH.

SET 1/4 CORNER AT PROPORTIONATE POSITION.
A 5" DIAM. FIR SCRIBED "T30S R3W 1/4 S1 BT"
BEARS S 6° W, 18.0'
A 5" DIAM. FIR SCRIBED "T29S R3W 1/4 S36 BT"
BEARS N 86° W, 24.5'
SIX FOOT STEEL POSTS ARE SET 2 FEET
WEST AND 2 FEET EAST.

SECTION CORNER
FOUND 1963 D.C.S. BRASS CAP.
32" DIAM. FIR WITH H.B. BEARS S 65° W, 26.0'
34" DIAM. FIR WITH H.B. BEARS N 75° W, 23.1'

LEGEND

- ⊙ INDICATES COUNTY SURVEYOR OR B.L.M. BRASS CAP FOUND.
- ◆ INDICATES 23" DIAMETER FIR CORNER TREE STUMP FOUND.
- INDICATES 5/8" X 30" STEEL REBAR WITH 2 1/2" ALUM. CAP MARKED AS PER THE 2009 B.L.M. MANUAL AND WITH "ROSEBURG RESOURCES CO." AND "L.S. 2339 AND "2016" SET.
- () DENOTES RECORD DATA PER 1909 G.L.O. RETRACEMENT SURVEY UNLESS OTHERWISE NOTED.
- { } DENOTES RECORD DATA PER 1971 B.L.M. RESURVEY.
- [] DENOTES RECORD DATA PER M 97-65.
- DENOTES BOUNDARY POSTED AND BLAZED THIS SURVEY.

SCALE: 1" = 500'

H.B. = HEALED BLAZE.

BASIS OF BEARINGS: M 97-65 AS SHOWN.

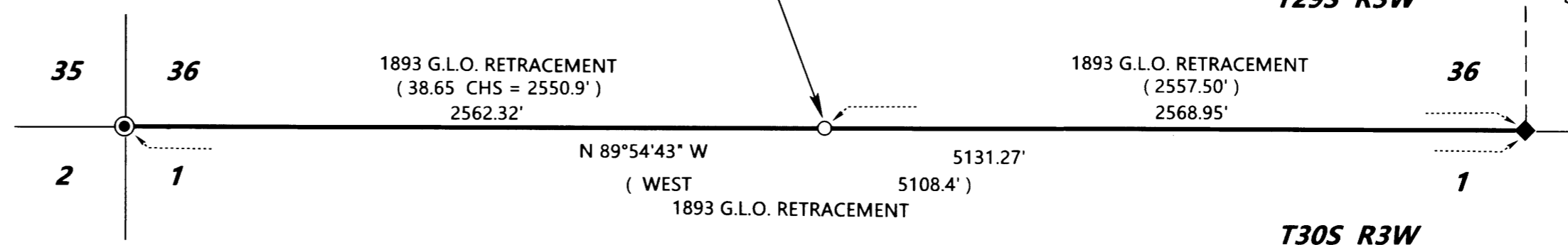
NARRATIVE

THE PURPOSE OF THIS SURVEY IS TO MARK THOSE BOUNDARIES SHOWN AS BOLD LINES HEREON. RANDOM TRAVERSES WERE RUN BETWEEN THE CONTROLLING CORNERS AND OFFSETS MADE TO THE TRUE LINE. THE BOUNDARIES WERE MARKED BY BLAZING TREES ON EACH SIDE OF THE LINE, BY SETTING SIX FOOT STEEL POSTS ALONG THE BOUNDARY AT INTERVALS OF 200 FEET OR LESS AND BY HANGING LIBERAL AMOUNTS OF RED FLAGGING ALONG THE TRUE LINE. EXTENSIVE SEARCHES USING PROPORTIONATE MEASUREMENTS AND TOPO CALLS FROM G.L.O. RETRACEMENT SURVEYS WERE MADE FOR THE STONES AND BEARING TREES AT THE WEST 1/4 CORNER OF SECTION 31, T29S, R2W AND THE 1/4 CORNER COMMON TO SECTIONS 36 AND 1 WITH NEGATIVE RESULTS. MUCH CAT LOGGING AND FIRE TRAIL CONSTRUCTION HAS BEEN DONE IN BOTH AREAS. I CONSULTED WITH LOCAL B.L.M. PERSONNEL AND THE CONSENSUS WAS THAT THE MISSING SOUTH 1/4 CORNER POSITION SHOULD BE PROPORTIONED AGAINST THE 1893 RETRACEMENT VALUES AND THAT IT REMAINS COMMON WITH SECTION 1.

FIELD CREW: BRANT MILLER AND ERIC SPRINKLE.

EQUIPMENT: NIKON TOTAL STATION.

COMPUTATIONS AND DRAFTING: DAVID EDWARDS.



SECTION CORNER FOUND AS
PER 2003 B.L.M. RESURVEY.

SE CORNER T29S R3W. FOUND
25" DIAM. FIR CORNER TREE STUMP.
1971 B.L.M. BRASS CAP REF. MON. BEARS N 56° W, 19.8'
A 16" DIAM. FIR SNAG WITH H.B. BEARS N 45° W, 2.6'
A 34" DIAM. FIR STUMP WITH H.B. BEARS N 55 1/2° E, 57.9'
NEW B.T.: A 9" DIAM. FIR SCRIBED "T29S R3W S36 BT"
BEARS N 26° W, 6.1 FEET.
A SIX FOOT STEEL POST IS SET 2 FEET WEST.

MAP FILE M 172-56

MAP FILE M 172-56