

# MAP OF SURVEY

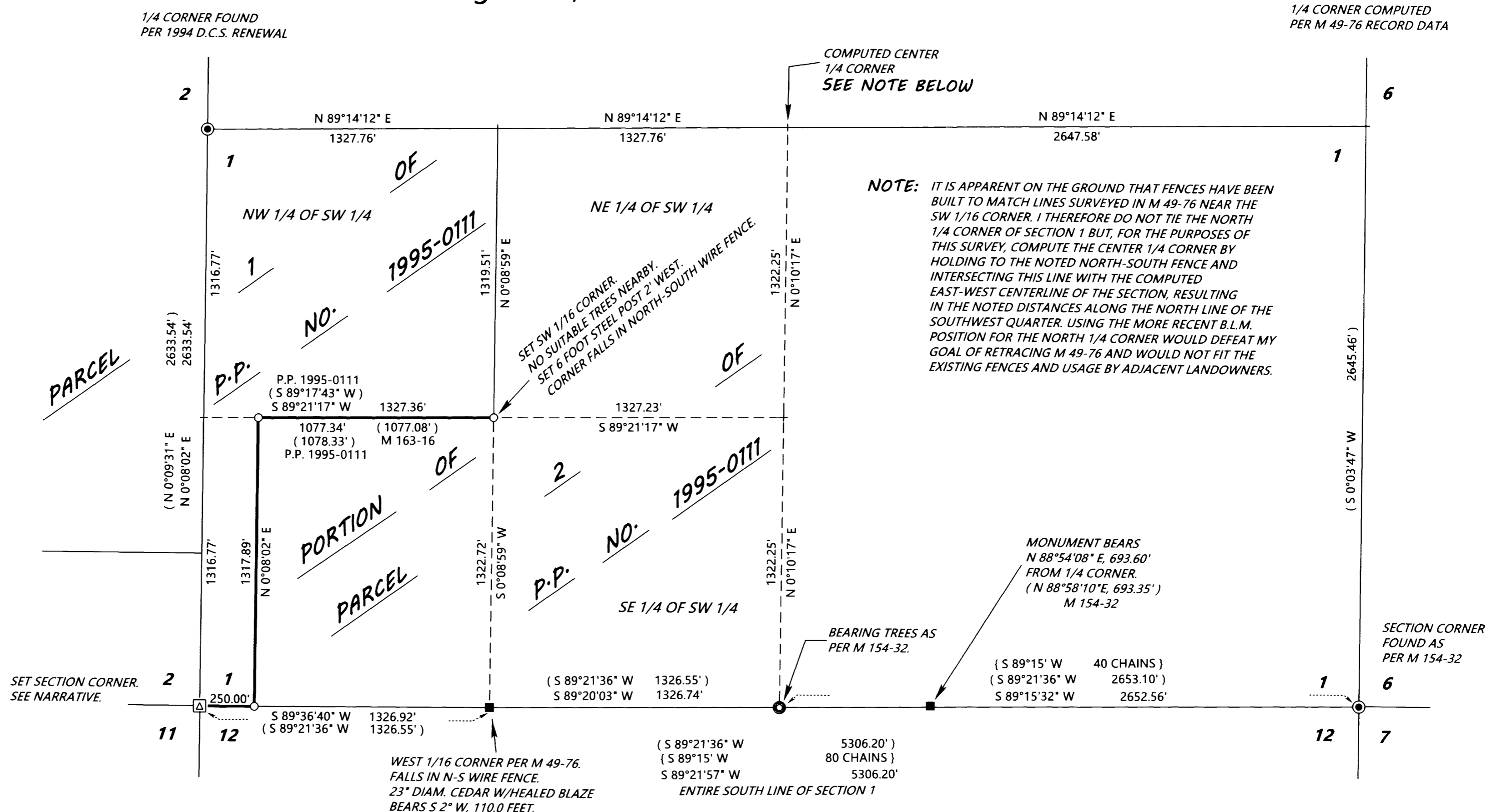
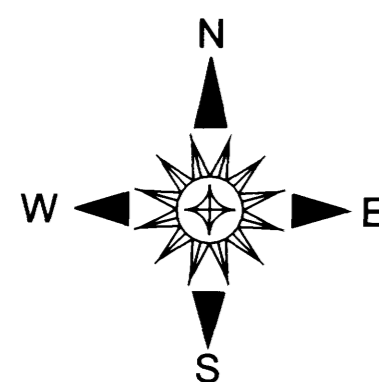
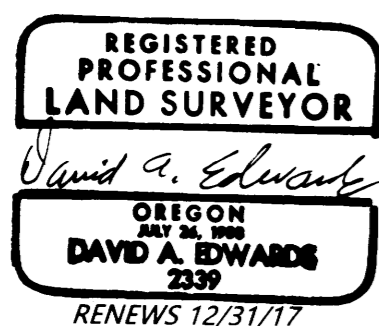
LOCATED in the SW 1/4 of Section 1, T. 26 S., R. 7 W., W.M.  
in Douglas County, Oregon.

August 15, 2016

FILED  
Date: 9/22/2016 By: [Signature]  
This survey consists of:  
Map: M 172-38  
Narrative: \_\_\_\_\_  
Computation: \_\_\_\_\_  
DOUGLAS COUNTY  
SURVEYOR

SURVEYED FOR: C.V. SHELDON FAMILY L.P.  
P.O. BOX 668  
LINDSAY, CA. 93247

SURVEYED BY: DAVID EDWARDS LAND SURVEYING  
P.O. BOX 361  
OAKLAND, OREGON 97462  
PHONE: (541) 459-0512



## LEGEND

- INDICATES COUNTY SURVEYOR BRASS CAPPED IRON PIPE FOUND.
- INDICATES BRASS CAPPED IRON PIPE FOUND AT 1/4 CORNER COMMON TO SECTIONS 1 AND 12 PER M 49-76.
- INDICATES 5/8" DIAM. IRON ROD FOUND PER M 49-76.
- ▣ INDICATES 5/8" X 30" STEEL REBAR WITH 2 1/2" DIAM. ALUM. CAP MARKED AS PER THE 2009 B.L.M. MANUAL AND "LS 2339" AND "2016" SET.
- INDICATES 5/8" X 30" STEEL REBAR WITH RED PLASTIC CAP MARKED "D.A. EDWARDS-LS. 2339" SET.
- ( ) DENOTES RECORD DATA PER M 49-76 UNLESS OTHERWISE NOTED.
- { } DENOTES RECORD DATA PER 1856 G.L.O. PLAT.
- DENOTES BOUNDARY POSTED AND BLAZED THIS SURVEY.

SCALE: 1" = 400'

P.P. = PARTITION PLAT.

BASIS OF BEARINGS: COMPUTED RECORD BEARING BETWEEN THE WEST 1/4 CORNER AND THE SE CORNER OF SECTION 1 PER M 49-76.  
RECORD = S 64°05'16" E, 5890.82'  
MEASURED = S 64°05'16" E, 5892.09'

## NARRATIVE

THE PURPOSE OF THIS SURVEY IS TO MARK THOSE BOUNDARIES SHOWN AS BOLD LINES HEREON AND TO MONUMENT CERTAIN CORNERS OF PARCEL 2 OF PARTITION PLAT NO. 1995-0111 AS SHOWN. THE SURVEY FILED AS M 49-76 TIED IN CONTROLLING MONUMENTS THAT ALLOWED FOR COMPUTATION OF A PROPORTIONATE POSITION FOR THE SOUTHWEST CORNER OF SECTION 1 AS WELL AS THE 1/4 AND WEST 1/16 CORNERS COMMON TO SECTIONS 1 AND 12. ONLY THE LATTER TWO CORNERS WERE MONUMENTED ON M 49-76. PARTITION PLAT NO. 1995-0111 USES M 49-76 AS A BASE FOR COMPUTING THE NEW PARCEL CORNERS ESTABLISHED THEREIN. I HOLD TO THE FOUND SOUTH 1/4 CORNER AND WEST 1/16 EVEN THOUGH THE LATTER SEEMS TO BE SLIGHTLY OUT OF POSITION COMPARED TO M49-76 RECORD DATA. THIS FACT PRECLUDES ME FROM EXTENDING THE LINE FROM THE SOUTH 1/4 CORNER THROUGH THE WEST 1/16 CORNER TO MONUMENT THE SOUTHWEST CORNER OF SECTION 1 AS CLOSE AS POSSIBLE TO THE POSITION DETERMINED BY BAUGHMAN IN M 49-76. AFTER TRYING SEVERAL METHODS I ELECT TO HOLD THE M 49-76 RECORD DISTANCES FROM THE WEST 1/4 CORNER AND SOUTHEAST CORNER OF SECTION 1 TO COMPUTE MY POSITION. THIS GIVES ME THE BEST FIT OVERALL TO THE M 49-76 DATA AND MONUMENTS. THE SUBDIVISION OF THE SOUTHWEST 1/4 OF SECTION 1 WAS THEN COMPUTED AS SHOWN. THE SUBJECT BOUNDARIES WERE MARKED BY BLAZING TREES ON EACH SIDE OF THE LINE, BY SETTING SIX FOOT STEEL POSTS ALONG THE LINE AT INTERVALS OF 200 FEET OR LESS AND BY HANGING LIBERAL AMOUNTS OF RED FLAGGING ALONG THE TRUE LINE.

AT THE SET SW CORNER OF SECTION 1: A 16" DIAM. FIR SCRIBED "T26S R7W S1 BT" BEARS N 72° E, 15.7 FEET.  
A 12" DIAM. FIR SCRIBED "T26S R7W S11 BT" BEARS S 9 1/2° W, 7.1 FEET.  
SIX FOOT STEEL POSTS ARE SET 2 FEET SOUTH AND 2 FEET EAST.

FIELD CREW: BRANT MILLER AND ERIC SPRINKLE.

EQUIPMENT: NIKON TOTAL STATION.

COMPUTATIONS AND DRAFTING: DAVID EDWARDS.

MAP FILE M172-38

MAP FILE M172-38