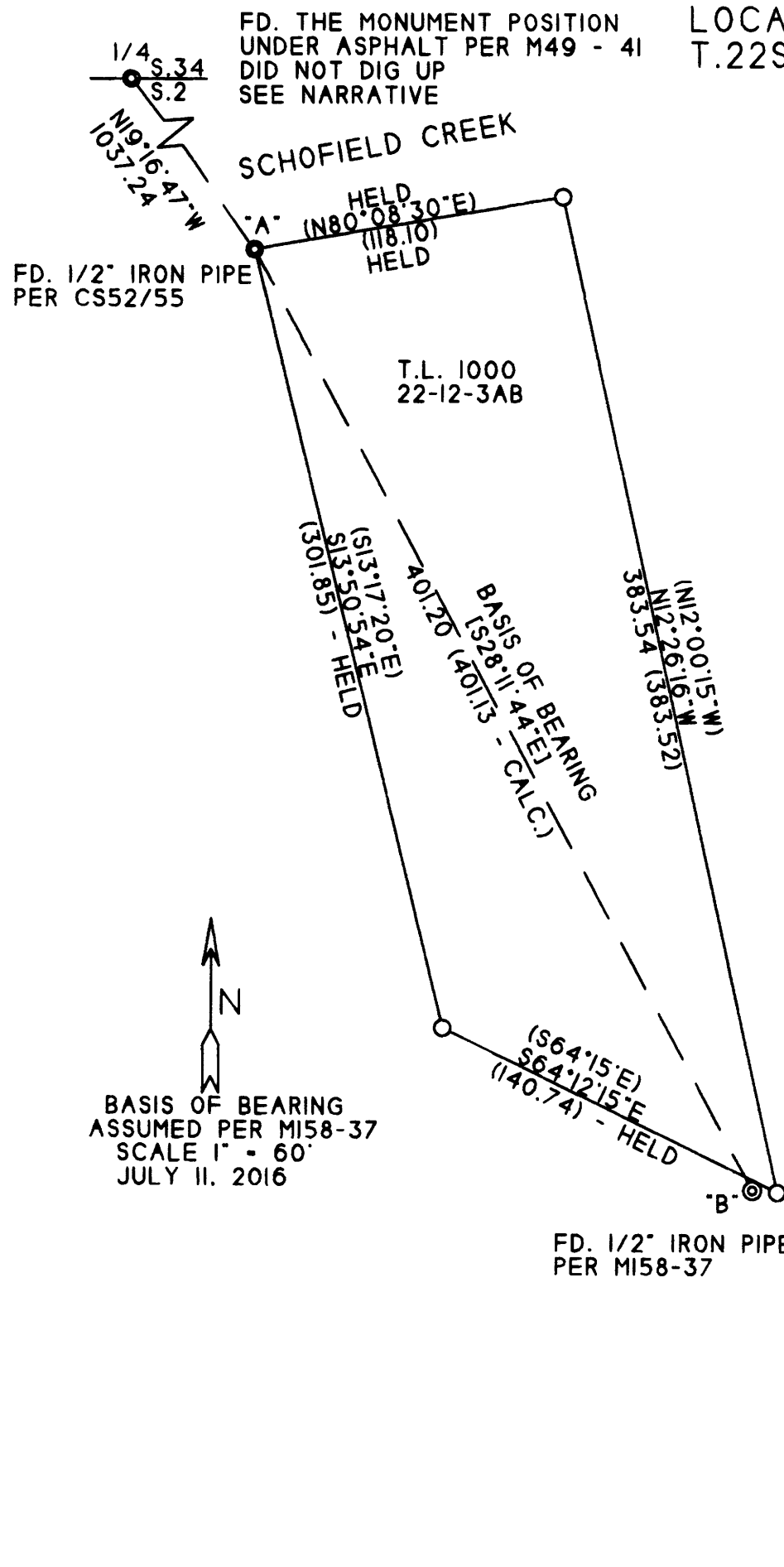


PROPERTY SURVEY
 LOCATED IN THE NW1/4 OF THE NE1/4 OF SECTION 3.
 T.22S. R.12W.. W.M. DOUGLAS COUNTY, OREGON

FILED
 Date: 8/8/2016 By: JC
 This survey consists of:
 Map: M 172-27
 Narrative: _____
 Corner Ept. _____

MAP FILE M 172-27



- LEGEND**
- ⊙ FD. CORNER AS SHOWN
 - SET 5/8" X 30" REBAR WITH A PLASTIC CAP MKD. "LS 2865"
 - () RECORD BEARING/DISTANCE PER CS 55/4-1
 - [] RECORD BEARING/DISTANCE PER MI58/37

NOTE: I FOUND NO BUILDING ENCROACHEMETS DURING THIS SURVEY.

PREPARED FOR:
 THE ESTATE OF SUSANNA GROENEVELD
 C/O CINDY FITZGERALD
 1738 SE HALYARD LN.
 VANCOUVER, WA 98661

PREPARED BY:
 MULKINS & RAMBO, LLC
 P.O. BOX 809
 NORTH BEND, OR 97459

REGISTERED PROFESSIONAL LAND SURVEYOR

Troy Rambo

OREGON
 JULY 14, 1998
 TROY J. RAMBO
 2865

RENEWAL 12-31-16

NARRATIVE

THE PURPOSE OF THIS SURVEY WAS TO FIND OR RESET THE CORNERS ESTABLISHED IN CS* 52/55. CONTROL FOR THIS SURVEY WAS BASED ON M49-41, CS* 52/55, CS* 55/4-1 AND MI58-37.

THE THE CORNERS LABELED "A" AND "B" WERE TIED TO GET ON THE COORDINATE BASIS OF MI58-37. THE SOUTHWEST CORNER POSITION WAS THEN CALCULATED BY THE DISTANCE - DISTANCE INTERSECT METHOD.

THE CORNER LABELED "B" MAY HAVE BEEN ESTABLISHED IN CS* 52/55 BUT BASED THE NEIGHBORS STATEMENTS, THIS CORNER MAY HAVE BEEN MOVED DURING DRIVEWAY CONSTRUCTION IN THE LATE 1970'S AND THEREFORE WAS NOT HELD AS A PROPERTY CORNER.

THE NORTHEAST CORNER POSITION WAS CALCULATED BY HOLDING THE RECORD BEARING AND DISTANCE AS SHOWN.

THE 1/4 CORNER POSITION BETWEEN SECTIONS 35 AND 2 WAS LOCATED BY TYING THE CHISELED "X"'S IN THE BRIDGE ABUTMENTS AS DESCRIBED ON M 49-41 AND USING A METAL DETECTOR TO PINPOINT THE MONUMENT'S LOCATION UNDER THE ASPHALT.

THE FIELD WORK WAS PERFORMED BETWEEN JUNE 15 AND JUNE 20, 2016 BY MYSELF.

MAP FILE M 172-27

BASIS OF BEARING ASSUMED PER MI58-37 SCALE 1" = 60' JULY 11, 2016