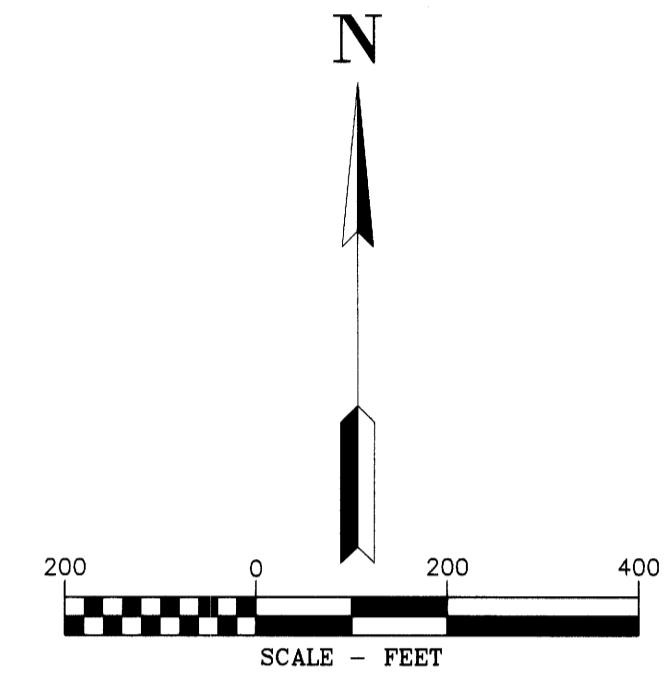


RECORD OF SURVEY

LOCATED IN THE
NORTHWEST 1/4 OF SECTION 31,
TOWNSHIP 29 SOUTH, RANGE 3 WEST, W.M.
DOUGLAS COUNTY, OREGON

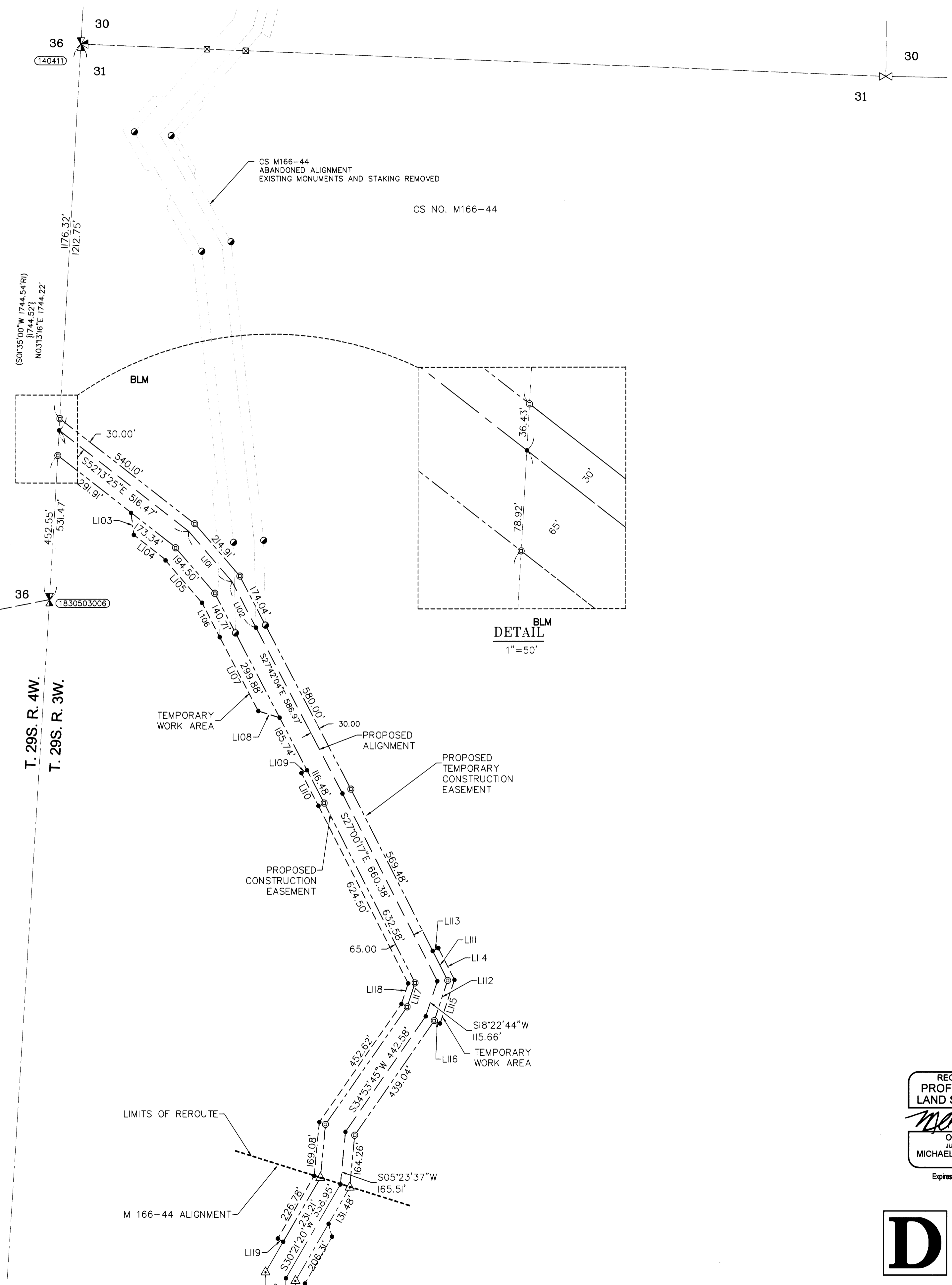
FILED
Date: 9-30-19 By: D
This survey consists of:
Map: M171-67A-C
Narrative:
Corner Rpt:
DOUGLAS COUNTY
SURVEYOR



AREA SECTION 25 T. 29S. R. 4W.

TEMPORARY CONSTRUCTION EASEMENT	10.37 ACRES
TEMPORARY WORK AREA	2.85 ACRES

LINE TABLE		
LINE #	DIRECTION	LENGTH
L101	S40°53'43"E	208.46'
L102	S27°42'04"E	163.52'
L103	S07°13'25"E	69.50'
L104	S52°13'25"E	118.39'
L105	S40°53'43"E	186.07'
L106	S27°27'03"E	120.91'
L107	S27°42'04"E	261.68'
L108	S72°43'27"E	70.68'
L109	S62°17'56"W	20.00'
L110	S27°42'04"E	115.95'
L111	S27°00'17"E	103.72'
L112	S18°22'44"W	132.56'
L113	N62°59'42"E	20.00'
L114	S27°00'17"E	112.09'
L115	S18°22'44"W	143.83'
L116	N63°21'45"W	20.21'
L117	S18°22'44"W	79.05'
L118	S18°22'44"W	67.78'
L119	S59°38'40"E	20.00'
L120	S35°16'29"E	313.23'

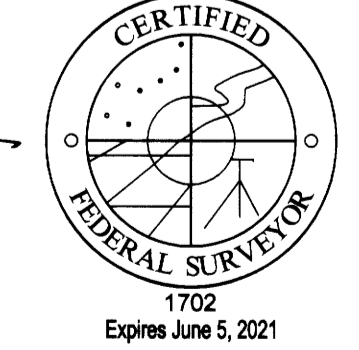


DETAIL
1" = 50'

LEGEND

- ⊙ SET 5/8" X 30" REBAR WITH 1 1/4" YELLOW PLASTIC CAP (DYER PARTNER LS 2340)
- ⊠ REMOVED 5/8" X 30" REBAR WITH 1 1/4" YELLOW PLASTIC CAP (KLEIN & ASSOC. LS 58608)
- REMOVED 5/8" REBAR WITH 1 1/4" YELLOW PLASTIC CAP (KITZ LS 1853)
- △ FND 5/8" X 24" REBAR WITH 1 1/4" YELLOW PLASTIC CAP (KITZ 1853LS) SURVEY NO. M166-44
- FOUND 5/8" REBAR WITH 1 1/4" YELLOW PLASTIC CAP (KLEIN & ASSOC. LS 59002)
- ⊙ FOUND MONUMENT AS NOTED (SEE CORNER NOTES)
- COMPUTED POINT, NOT MONUMENTED
- ⊠ FOUND QUARTER CORNER SEE CORNER NOTES
- ⊠ FOUND SECTION CORNER SEE CORNER NOTES
- ⊠ COMPUTED QUARTER CORNER
- ⊠ COMPUTED SECTION CORNER
- ① POINT NUMBER
- {XXX.XX'} GROUND DISTANCE
- (XXX.XX') RECORD DISTANCE PER REFERENCED SURVEY
- R1 REFERENCED SURVEY
- CS. NO. COUNTY SURVEY NUMBER
- PROPOSED ALIGNMENT
- - - - - TEMPORARY CONSTRUCTION EASEMENT
- - - - - TEMPORARY WORK AREA

REGISTERED PROFESSIONAL LAND SURVEYOR
MICHAEL W. ERICKSON
2340
Expires 12-31-2019



D THE DYER PARTNERSHIP ENGINEERS & PLANNERS, INC.
1330 Teakwood Avenue / Coos Bay, Oregon 97420
(541) 269-0732 / WWW.DYERPART.COM

PACIFIC CONNECTOR GAS PIPELINE PROJECT
PACIFIC CONNECTOR GAS PIPELINE, LP
RECORD OF SURVEY
SECTION 31
TOWNSHIP 29 SOUTH, RANGE 3 WEST, W.M.
DOUGLAS COUNTY, OREGON

Pacific Connector GAS PIPELINE

DRAWN BY: BTB	DATE: 7-26-2019	ISSUED FOR BID:	SCALE: 1" = 200'
CHECKED BY:	DATE:	ISSUED FOR CONSTRUCTION:	
APPROVED BY:	DATE:	DRAWING NUMBER:	SHEET 3 OF 3