

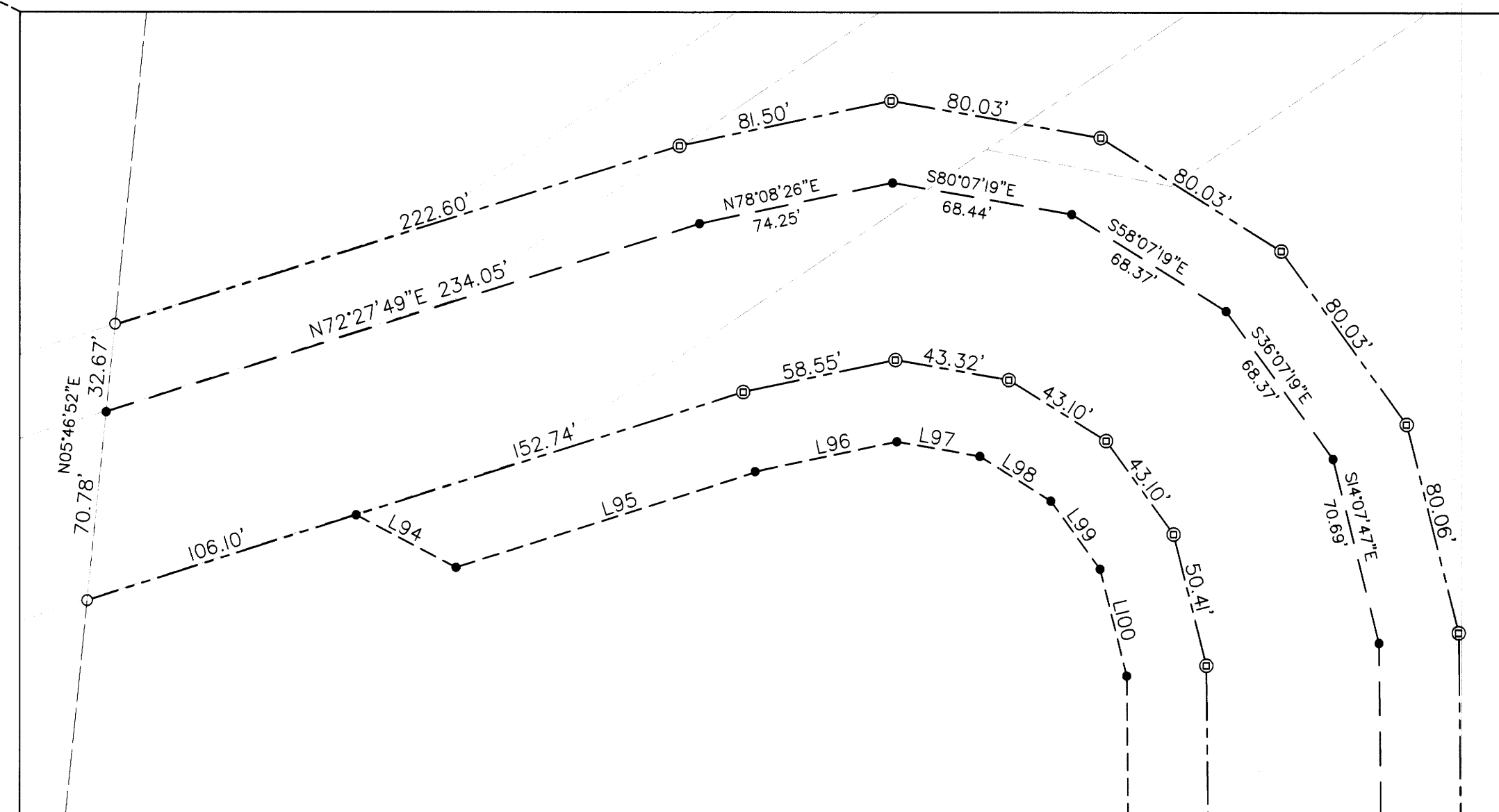
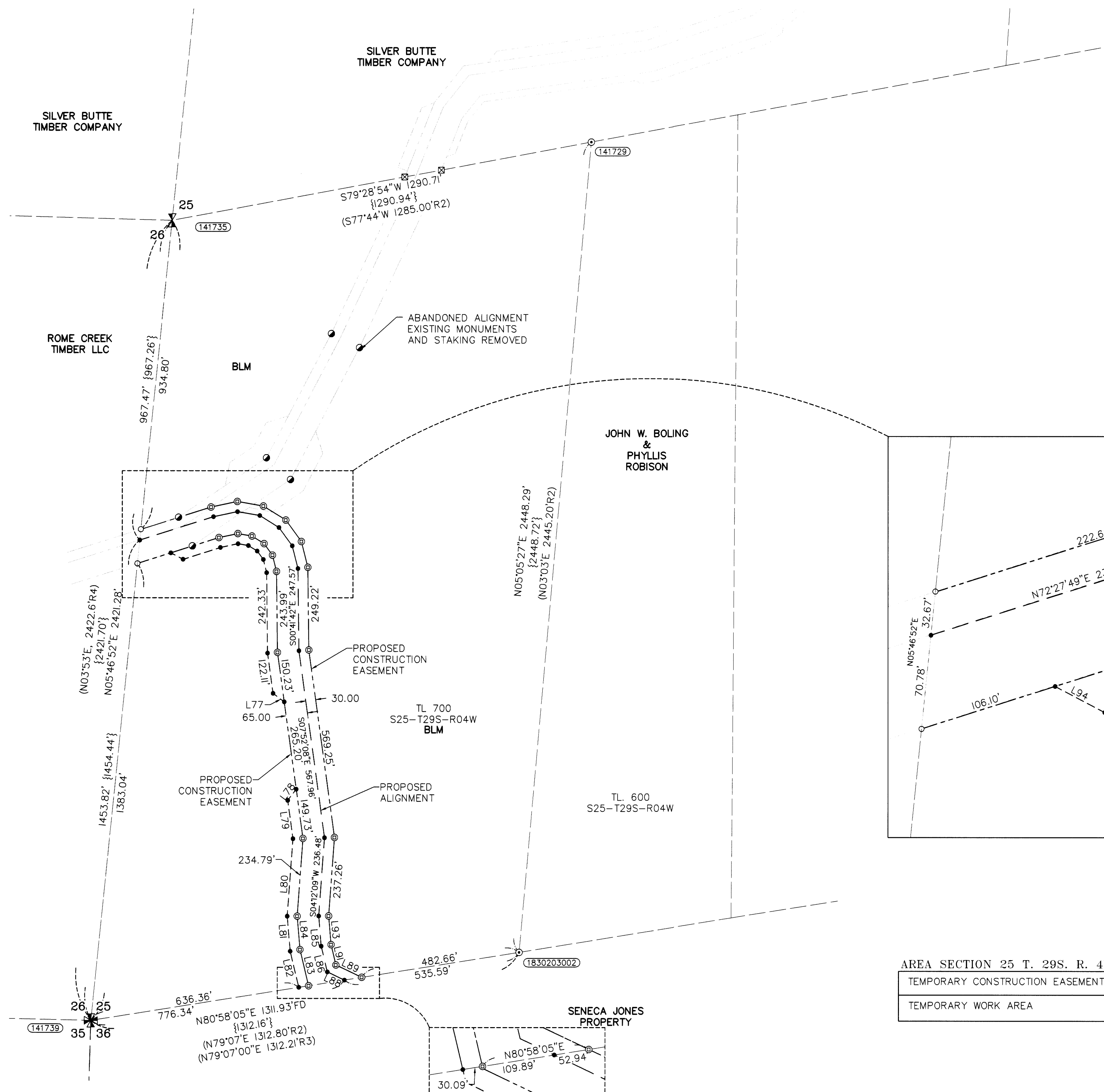
# RECORD OF SURVEY

LOCATED IN THE  
SOUTHWEST 1/4 OF SECTION 25,  
TOWNSHIP 29 SOUTH, RANGE 4 WEST, W.M.  
DOUGLAS COUNTY, OREGON

Date: 9-30-19 By: BJ  
This survey consists of:  
Map: M171-67 A-C  
Narrative:  
Corner Rpt:  
DOUGLAS COUNTY  
SURVEYOR

### LEGEND

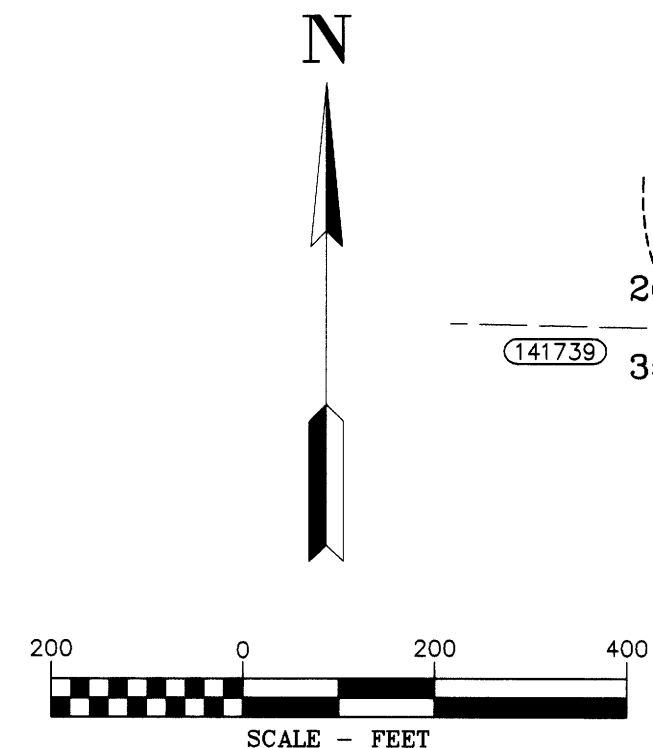
- ⊙ SET 5/8" X 30" REBAR WITH 1 1/4" YELLOW PLASTIC CAP (DYER PARTNER LS 2340)
- ⊠ REMOVED 5/8" X 30" REBAR WITH 1 1/4" YELLOW PLASTIC CAP (KLEIN & ASSOC. LS 58608)
- REMOVED 5/8" REBAR WITH 1 1/4" YELLOW PLASTIC CAP (KITZ LS 1853)
- FOUND 5/8" REBAR WITH 1 1/4" YELLOW PLASTIC CAP (KLEIN & ASSOC. LS 59002)
- ⊙ FOUND MONUMENT AS NOTED (SEE CORNER NOTES)
- COMPUTED POINT, NOT MONUMENTED
- ⊠ FOUND QUARTER CORNER  
SEE CORNER NOTES
- ⊠ FOUND SECTION CORNER  
SEE CORNER NOTES
- ⊠ COMPUTED QUARTER CORNER
- ⊠ COMPUTED SECTION CORNER
- (100000) POINT NUMBER
- {XXX.XX'} GROUND DISTANCE
- (XXX.XX') RECORD DISTANCE PER REFERENCED SURVEY
- R1 REFERENCED SURVEY
- CS. NO. COUNTY SURVEY NUMBER
- PROPOSED ALIGNMENT
- - - - - TEMPORARY CONSTRUCTION EASEMENT
- - - - - TEMPORARY WORK AREA



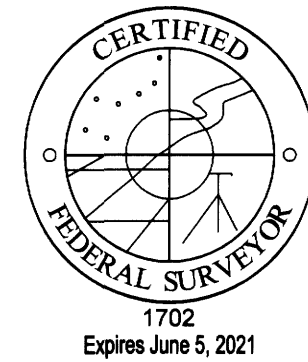
DETAIL  
1"=50'

AREA SECTION 25 T. 29S. R. 4W.	
TEMPORARY CONSTRUCTION EASEMENT	4.00 ACRES
TEMPORARY WORK AREA	0.90 ACRES

LINE #	DIRECTION	LENGTH
L77	S52°52'08"E	42.43'
L78	S37°08'08"W	42.42'
L79	S07°52'08"E	116.56'
L80	S04°12'09"W	234.01'
L81	S04°54'58"E	105.50'
L82	S13°24'43"E	112.02'
L83	S13°24'43"E	112.09'
L84	S04°54'58"E	100.88'
L85	S04°54'58"E	90.87'
L86	S13°24'43"E	79.69'
L88	S64°30'36"E	57.26'
L89	S64°30'36"E	86.54'
L91	S13°24'43"E	63.12'
L93	S04°54'58"E	86.25'
L94	S62°28'48"E	42.38'
L95	N72°27'49"E	121.31'
L96	N78°08'26"E	51.30'
L97	S80°07'19"E	31.73'
L98	S58°07'19"E	31.43'
L99	S36°07'19"E	31.44'
L100	S14°07'47"E	41.05'



DETAIL  
1"=100'



**THE DYER PARTNERSHIP  
ENGINEERS & PLANNERS, INC.**  
1330 Teakwood Avenue / Coos Bay, Oregon 97420  
(541) 269-0732 / WWW.DYERPART.COM

PACIFIC CONNECTOR GAS PIPELINE PROJECT  
PACIFIC CONNECTOR GAS PIPELINE, LP  
RECORD OF SURVEY  
SECTION 25  
TOWNSHIP 29 SOUTH, RANGE 4 WEST, W.M.  
DOUGLAS COUNTY, OREGON



DRAWN BY: LJS	DATE: 7-26-2019	ISSUED FOR BID:	SCALE: 1" = 200'
CHECKED BY:	DATE:	ISSUED FOR CONSTRUCTION:	
APPROVED BY:	DATE:	DRAWING NUMBER:	SHEET 2 OF 3