

RECORD OF SURVEY

LOCATED IN
WEST 1/2, SECTION 24, T21S, R6W, W.M.
DOUGLAS COUNTY, OREGON

FILED
Date: 2-20-2019 By: 88'
This Survey Consists of:
Map: M171-55
Narrative:
Corner Rpt.:
DOUGLAS COUNTY
SURVEYOR

NARRATIVE:

THE PURPOSE OF THIS SURVEY IS TO RETRACE AND MARK THE WEST LINE OF SECTION 24 AND THE NORTH LINE OF THE NW 1/4 OF SECTION 24, T.21S., R.6W., W.M., FOR TIMBER MANAGEMENT PURPOSES.

SURVEY HISTORY:

- [] R1 - US GLO ORIGINAL SURVEY OF T.21S., R.6W., W.M. BY US DEPUTY SURVEYOR W.H. BYARS, PER CONTRACT NO. 152, DATED JUNE 3, 1871, APPROVED APRIL 26, 1872. SURVEYS SECTIONS 25, 35, & 36.
- [] R2 - US GLO COMPLETION SURVEY OF T.21S., R.6W., W.M. BY US DEPUTY SURVEYOR WM. P. WRIGHT, PER CONTRACT NO. 514, DATED AUGUST 27, 1884, APPROVED FEBRUARY 25, 1885. COMPLETES SURVEY OF TOWNSHIP.
- [] R3 - DOUGLAS COUNTY RECORD OF SURVEY M 20-76 BY WILFORD N. HAINES, PLS 239, JULY 1961 FOR WOOLLEY LOGGING CO. AS PERTAINING TO THIS SURVEY SURVEYS BETWEEN 1/4 S24/S25 AND S23/S24/S25/S26.
- [] R4 - DOUGLAS COUNTY RECORD OF SURVEY M 21-74 BY WILFORD N. HAINES, PLS 239, IN 1961 FOR WOOLLEY LOGGING CO. SURVEY IN SECTION 26, MONUMENTS S23/S24/S25/S26 FROM ORIGINAL EVIDENCE.
- [] R5 - DOUGLAS COUNTY CORNER RECORD C.S. FILE 51/27 BY WILFORD N. HAINES, PLS 239, JULY 10, 1961 FOR WOOLLEY LOGGING CO. MONUMENTS S13/S14/S23/S24 FROM ORIGINAL EVIDENCE.
- [] R6 - DOUGLAS COUNTY CORNER RECORD C.S. FILE 49/143-12 - DCSO NOVEMBER 28, 1961 VERIFIES HAINES M 21-74 T-IRON LOCATION, MARKS TWO NEW BEARING TREES.
- [] R7 - DOUGLAS COUNTY RECORD OF SURVEY M 32-44 BY WILFORD N. HAINES, PLS 239, DECEMBER 1966 FOR WOOLLEY LOGGING CO. SURVEY OF THE NORTH, EAST, & WEST BOUNDARIES SECTION 24. MONUMENTS THE 1/4 S23/S24 FROM ORIGINAL EVIDENCE. IMPROPERLY PROPORTIONS THE 1/4 S13/S24. BLAZES THE NORTH AND WEST BOUNDARIES.
- [] R8 - DOUGLAS COUNTY CORNER RECORD C.S. FILE 49/143-103 BY WILFORD N. HAINES, PLS 239, DECEMBER 1967 PERPETUATES AND REFERENCES THE T-IRON MONUMENT AT S23/S24/S25/S26
- [] R9 - USBLM REMONUMENTATION - J. JELLEY 1979 - DCSO VOL. 42 PG. 16478 REMONUMENTS HAINES T-IRON AT S13/S14/S23/S24
- [] R10 - DOUGLAS COUNTY RECORD OF SURVEY M 138-26 BY ROBERT B. WARD JR., PLS 1091, JUNE 2001 FOR SENECA JONES TIMBER CO. SUBDIVISION OF SECTION 24, SETS C 1/4, MARKS NORTH AND SOUTH LINES OF NE 1/4
- [] R11 - DOUGLAS COUNTY RECORD OF SURVEY C.S. FILE 65/61-10 BY DAVID EDWARDS, PLS 2339, AUGUST 21, 2007 FOR SENECA JONES TIMBER CO. SURVEYS AND MARKS THE LINE BETWEEN SECTIONS 25 AND 26. IMPROPERLY RE-MONUMENTS S23/S24/S25/S26
- [] R12 - DOUGLAS COUNTY RECORD OF SURVEY C.S. FILE 65/70-10 BY RONALD L. RICE, PLS 54633, OCTOBER 21, 2010 FOR SENECA JONES TIMBER CO. SURVEYS AND MARKS THE EAST LINE OF SW 1/4 S24
- [] R13 - DOUGLAS COUNTY RECORD OF SURVEY C.S. FILE 65/98-3 BY DAVID EDWARDS, PLS 2339, JANUARY 2, 2018 FOR SENECA JONES TIMBER CO. SURVEYS AND MARKS THE SOUTH LINE OF SW 1/4 S24, HOLDS THE CS 65/61-10 MONUMENT

BOUNDARY CONTROL:

THE CORNER OF SECTIONS 23, 24, 25, & 26, THE 1/4 CORNER OF SECTIONS 23 & 24, AND THE CORNER OF SECTIONS 13, 14, 23, & 24 ARE FOUND AS MONUMENTED IN THEIR ORIGINAL POSITIONS. THE 1/4 CORNER OF SECTIONS 13 & 24 IS FOUND AS CORRECTLY PROPORTIONED IN 2001 BY WARD PER M 138-26. THE 1966 HAINES MONUMENT PER M 32-44 WAS REJECTED DUE TO THE APPARENT 100 FOOT BLUNDER IN MEASUREMENT OF THE NORTH LINE OF SECTION 24. AT THE CORNER OF SECTIONS 23, 24, 25, & 26 I FIND THE HAINES T-IRON SET IN 1961 PER M 21-74, UN-DISTURBED IN ITS ORIGINAL POSITION, PROJECTING 6 INCHES ABOVE GROUND WITH THE ORIGINAL 1961 TACK STILL IN PLACE. DOUGLAS COUNTY SURVEYORS OFFICE VERIFIED HAINES CORNER POSITION AND ADDED NEW BEARING TREES IN 1961 PER C.S. FILE 49/143-12. IN 2007 UNDER C.S. 65/61-10, DAVID EDWARDS DID NOT FIND THE T-IRON AND RE-MONUMENTED THIS POSITION, UTILIZING A PORTION OF THE 1961 DCSO ACCESSORIES AND THE 5/8" IRON ROD SET BY HAINES IN 1967 PER C.S. FILE 49/143-103. I TIE ALL EXISTING ACCESSORIES OF RECORD AS NOTED IN THE CORNER DESCRIPTION. I MATCH THE 1961 DCSO DISTANCES TO THE EXISTING ORIGINAL NW CEDAR ROOT HOLE, AND THE NE AND SW CEDAR STUMPS, THOUGH THERE IS SOME IRREGULARITY WITH THE RECORD BEARINGS. THIS CORNER POSITION MATCHES THE 1966 HAINES BLAZES NORTH OF THE CORNER. I ACCEPT THE FOUND HAINES T-IRON AS PROPERLY SET FROM THE ORIGINAL EVIDENCE, AND REJECT THE EDWARDS C.S. FILE 65/61-10 MONUMENT. I ACCEPT ALL CORNERS IN THEIR CURRENT MONUMENTED POSITIONS, AND MARK TRUE LINE BETWEEN SAID MONUMENTS BY SETTING 5 1/2" STEEL POSTS ON-LINE AND INTERVISIBLE, AT NO MORE THAN ±200 FOOT AVERAGE INTERVALS. THE TOP 3 FEET OF THE POSTS ARE PAINTED RED, WITH RED "PROPERTY LINE" AND PINK FLAGGING TIED TO THE POSTS. ALL BOUNDARY LINES RETRACED HAD PREVIOUSLY BEEN BLAZED BY HAINES UNDER M 32-44 IN 1966, WITH 3 BLAZES FACING LINE, WHICH I MATCH EXTREMELY WELL. ALL TREES WITHIN 3-5 FT OF THE BOUNDARY ARE BLAZED WITH ONE FACING BLAZE, LINE TREES ARE BLAZED WHERE LINE PASSES THROUGH TREE AT BREAST HEIGHT, WITH THREE BLAZES ON EACH SIDE OF TREE, AND ALL BLAZES ARE PAINTED RED.

SURVEY CONTROL PROCEDURE:

A STATIC GPS SURVEY WAS PERFORMED WITH LEICA 1200 GPS RECEIVERS, WITH TIES TO THE NATIONAL SPATIAL REFERENCE FRAME BY A NGS OPUS SOLUTION ON A PROJECT CONTROL POINT. THE GPS BASELINES OBSERVED TO PROJECT CONTROL POINTS WERE PROCESSED AND ADJUSTED WITH LEICA GEO OFFICE. THE RESULTANT GEODETIC COORDINATES WERE THEN PROJECTED ONTO THE BELOW DEFINED TRANSVERSE MERCATOR COORDINATE SYSTEM. THE C 1/4 CORNER OF S24 WAS OCCUPIED DIRECTLY BY STATIC GPS OBSERVATION. A CLOSED LOOP CONVENTIONAL TRAVERSE WAS RUN ALONG THE BOUNDARY BETWEEN THE GPS CONTROL POINTS WITH A LEICA TOP1203 TOTAL STATION, AND ADJUSTED IN LEICA GEO OFFICE BY THE METHOD OF LEAST SQUARES. THIS SURVEY WAS PERFORMED IN THE FIELD FROM DECEMBER 10, 2018 TO JANUARY 31, 2019 BY ADAM DEGROOT, WYATT KEADY, AND TANNER STRONG, WITH COMPUTATIONS AND DRAFTING BY ADAM DEGROOT.

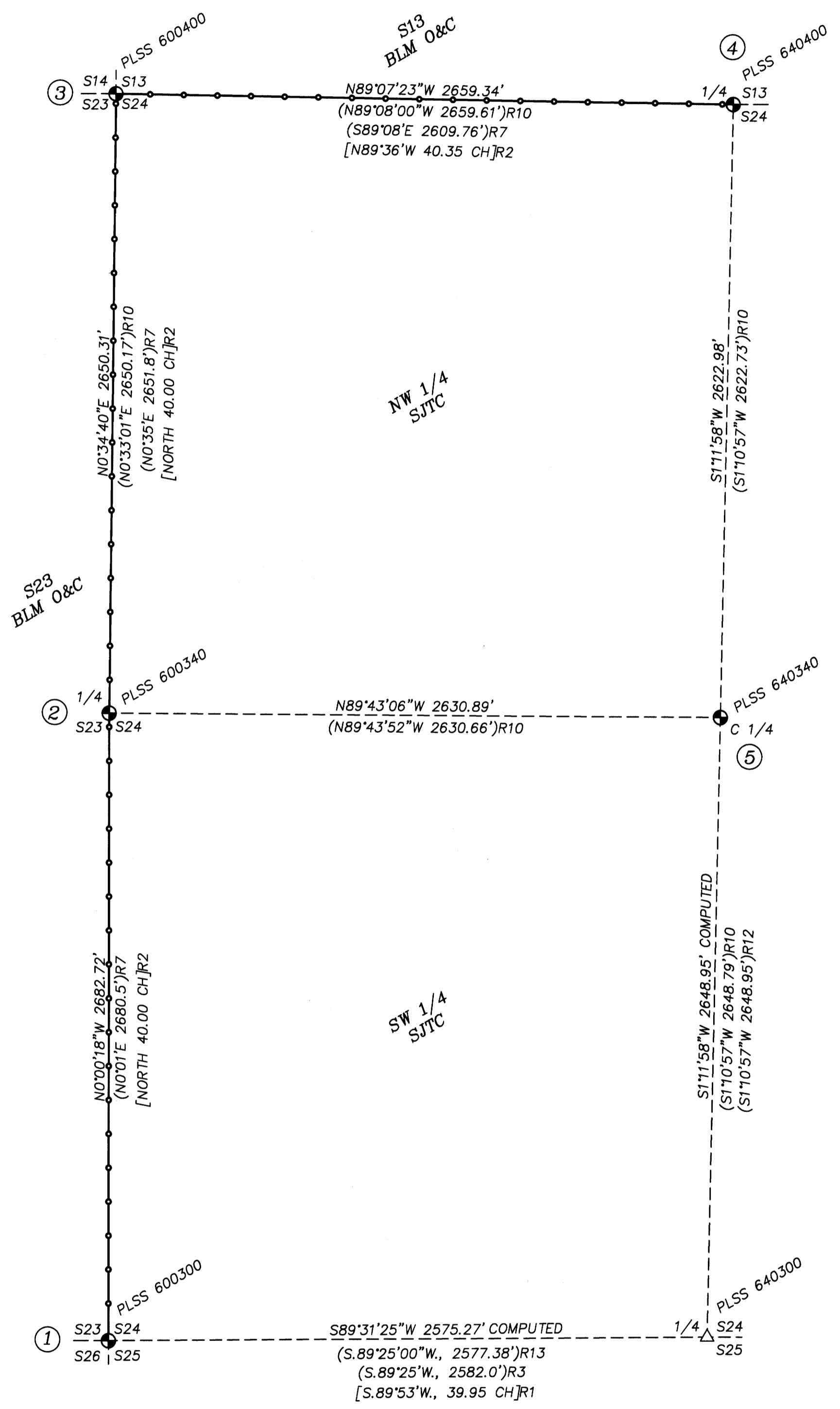
TRANSVERSE MERCATOR PROJECTION
 NAME: 18-011 S24 LDP
 REFERENCE DATUM: NAD 83 (2011) EPOCH 2010.00
 LATITUDE OF ORIGIN: 43°40'00"N
 CENTRAL MERIDIAN: 123°22'00"W
 CENTRAL MERIDIAN SCALE: 1.000051
 FALSE NORTHING: 50000.000 IFT
 FALSE EASTING: 150000.000 IFT

STATION	LATITUDE	LONGITUDE	ELLIP HGT
640340	43°43'44.86092"N	123°21'28.83663"W	319.286 M
600300	43°43'18.49694"N	123°22'04.66058"W	
600340	43°43'44.98986"N	123°22'04.66427"W	
600400	43°44'11.16132"N	123°22'04.30075"W	
640400	43°44'10.75811"N	123°21'28.08512"W	

CORNER DESCRIPTIONS:

ALL NEW BEARING TREES HAVE DOUBLE BLAZED FACES WITH A BRASS WASHER STAMPED "DEGROOT PLS 89398" NAILED INTO THE LOWER BLAZE. BEARINGS ARE TAKEN TO THE CENTER OF THE TREE AT THE ROOT CROWN AND DISTANCES ARE MEASURED TO A NAIL IN THE ROOT CROWN AT THE SIDE AND CENTER OF ALL TREES WITH A TOTAL STATION. ALL BEARING TREES HAVE A 6" RED BAND PAINTED AROUND THE TREE AND THE BLAZED FACE PAINTED RED AND BEARING TREE SIGNS NAILED TO THE TREE.

- ① S23/S24/S25/S26 PLSS ID. NO. T21S R06W 600300 ORIGINAL
FOUND A 1" x 1" T-IRON BY WILFORD HAINES, PLS 239, IN 1961 PER M 21-74, FIRMLY SET AND PROJECTING 6" ABOVE THE GROUND, WITH THE ORIGINAL TACK IN TOP. THE MONUMENT APPEARS TO BE UN-DISTURBED FROM THE 1961-1967 HAINES & DCSO LOCATION. FROM WHICH THE REMAINS OF ORIGINAL 1871 BEARING TREES BY W.H. BYARS:
A 48" D.FIR STUMP BEARS S.80°43'W, 28.23 FT TO A MAG-HUB IN TOP OF STUMP. DID NOT OPEN. [S.68"W, 42 LKS] R1
THE ROOT HOLE OF A DOWN 36" CEDAR BEARS N.35°W, 42.0 FT [N.42°W, 64 LKS] R1 (N.42°W, 42.2 FT) R6
AND THE REMAINS OF BEARING TREES MKD BY DCSO IN 1961 PER CS 49/143-12:
A 27" ROTTED CEDAR STUMP BEARS N.47°45'E, 26.4 FT, W/ILLEGIBLE SCRIBE MKS. ON FACE (N.54°E, 26.6 FT) R6
A 28" CEDAR STUMP BEARS S.59°00'W, 51.34 FT TO A MAG-HUB IN TOP OF STUMP. NO MKS. (S.55°30'W, 51.2 FT) R6
AND ACCESSORIES BY HAINES IN 1967 PER CS 49/143-103:
A 5/8" IRON ROD BEARS N.31°56'50"W, 125.87 FT - NOT DIRECTLY VISIBLE FROM CORNER (N.32°30'W, 122.94 FT) R8
A NAIL & 1.25" HAINES BRASS WASHER IN FACE OF A 48" D.FIR STUMP BEARS N.62°12'E, 21.67 FT (N.68°56'E, 22.19 FT) R8
AND ACCESSORIES SET BY EDWARDS IN 2007 PER CS 65/61-10:
A 5/8" IRON ROD BEARS N.41°39'08"W, 3.16 FT - PROJECTING 4" ABOVE GROUND - NO PLASTIC CAP
A 11" MAPLE BEARS N.71°E, 16.3 FT, W/ HEALED BLAZE
A 18" HEMLOCK BEARS N.85°45'W, 29.9 FT, W/ SCRIBE MKS. VISIBLE ON PART. HEALED BLAZE
A 18" D.FIR BEARS N.20°W, 17.2 FT, W/HEALED BLAZE
- ② 1/4 S23/S24 PLSS ID. NO. T21S R06W 600340 ORIGINAL
FOUND A 1 1/2" IRON ROD BY WILFORD HAINES, PLS 239, IN 1966 PER M 32-44, FIRMLY SET AND PROJECTING 6" ABOVE THE GROUND, FROM WHICH THE REMAINS OF AN ORIGINAL 1884 BEARING TREE BY WM. P. WRIGHT:
THE ROOT HOLE OF A DOWN 48" D.FIR BEARS S.87°W, 21.5 FT [S.87°W, 30 LKS] R2-R7 (S.87°W, 21.5 FT) R10
AND THE REMAINS OF THE 1966 BEARING TREE BY HAINES:
A ROTTED 28" D.FIR STUMP BEARS S.50°15'E, 34.2 FT, W/ ROTTED BLAZE (S.50°E, 34.1 FT) R7 (S.50°E, 34.0 FT) R10
AND NEW BEARING TREES:
A 10" D.FIR BEARS N.52°45'E, 22.4 FT SCRIBED "1/4S24 BT" ON DBL BLAZE
A 16" D.FIR BEARS S.54°15'E, 19.6 FT SCRIBED "1/4S24 BT" ON DBL BLAZE
A 11" D.FIR BEARS S.22°30'W, 18.9 FT SCRIBED "1/4S23 BT" ON DBL BLAZE
A 12" D.FIR BEARS N.21°W, 30.0 FT SCRIBED "1/4S23 BT" ON DBL BLAZE
- ③ S13/S14/S23/S24 PLSS ID. NO. T21S R06W 600400 ORIGINAL
FOUND A 2 1/2" STANDARD USBLM IRON POST BY J. JELLEY IN 1979 PER USBLM REMONUMENTATION (DCSO VOL. 42 PG. 16478), FIRMLY SET & PROJECTING 4" ABOVE GROUND, WITH A 3 1/4" BRASS CAP PROPERLY MKD. PER THE RECORD.
FROM WHICH THE REMAINING ORIGINAL 1884 BEARING TREES BY WM. P. WRIGHT:
A 44" D.FIR BEARS N.81°E, 40.3 FT W/RE-HEALED BLAZE & HAINES BRASS WASHER AT FACE HEIGHT [N.80°E, 60 LKS] R2-R5-R9
A 54" D.FIR BEARS N.60°15'W, 12.2 FT W/HEALED BLAZE & HAINES BRASS WASHER AT FACE HEIGHT [N.64°W, 17 LKS] R2-R9 (N.62°W, 17 LKS) R5
AND THE 1961 BEARING TREES BY HAINES PER CS 51/27:
A 9" ROTTED HEMLOCK STUMP BEARS S.45°45'E, 16.0 FT NO MKS. (S.42°E, 15.2 FT) R5 (S.46°E, 24 LKS) R9
A 21" HEMLOCK BEARS S.51°W, 23.6 FT W/HEALED BLAZE (S.53°W, 24.7 FT) R5 (S.50°W, 36 LKS) R9
AND A NEW BEARING TREE:
A 14" HEMLOCK BEARS S.40°30'E, 13.5 FT SCRIBED "T21SR6WS24 BT" ON DBL BLAZE
- ④ 1/4 S13/S24 PLSS ID. NO. T21S R06W 640400 PROPORTIONED
FOUND A 5/8" IRON ROD BY ROBERT WARD, PLS 1091, IN 2001 PER M 138-26, FIRMLY SET AND PROJECTING 8" ABOVE GROUND, WITH A 2 1/2" ALUMINUM CAP PROPERLY MKD. PER THE RECORD.
FROM WHICH THE 2001 BEARING TREES:
A 20" D.FIR BEARS N.4°30'W, 28.3 FT W/ HEALED BLAZE (N.4°30'E, 28.1 FT) R10
A 19" D.FIR BEARS N.80°E, 22.1 FT W/ HEALED BLAZE (N.80°15'E, 22.2 FT) R10
A 14" D.FIR BEARS S.31°30'E, 30.5 FT W/ HEALED BLAZE (S.31°30'E, 30.4 FT) R10
A 23" D.FIR BEARS S.48°30'W, 26.1 FT W/ HEALED BLAZE (S.48°30'W, 26.1 FT) R10
AND A REFERENCE MONUMENT BY HAINES IN 1966 PER M 32-44:
A 1/2" IRON ROD BEARS N.88°33'17"W, 48.94 FT (N.88°30'51"W, 48.98 FT) R10
- ⑤ C 1/4 S24 PLSS ID. NO. T21S R06W 640340
FOUND A 5/8" IRON ROD BY ROBERT WARD, PLS 1091, IN 2001 PER M 138-26, FIRMLY SET AND PROJECTING 6" ABOVE GROUND, WITH A 2 1/2" ALUMINUM CAP PROPERLY MKD. PER THE RECORD. I DID NOT TIE THE EXISTING BEARING TREES. THIS CORNER WAS DIRECTLY OCCUPIED BY STATIC GPS FOR CONTROL.



LEGEND:
 ● = FOUND PLSS MONUMENT AS NOTED IN CORNER DESCRIPTIONS
 △ = COMPUTED POINT
 — = PROPERTY LINES BLAZED, PAINTED & POSTED WITH 5 1/2" STEEL POSTS.

B.T.S.

BASIS OF BEARING: 18-011 S24 LDP

REGISTERED
PROFESSIONAL
LAND SURVEYOR

Adam Degroot

OREGON
MAY 26, 2005
ADAM DEGROOT
89398

RENEWS: 12-31-2019

BTS SURVEYING, INC.
 348 SE JACKSON ST., ROSEBURG, OR 97470
 (541) 673-0966 adam@btssurveying.com

SCALE: 1" = 400'	FOR: SENECA JONES TIMBER CO. PO BOX 10265 EUGENE, OR 97440	JOB #: 18-011 FILE: HARDCRABBLE S24.DWG SHEET 1 OF 1
DATE: JANUARY 31, 2019		