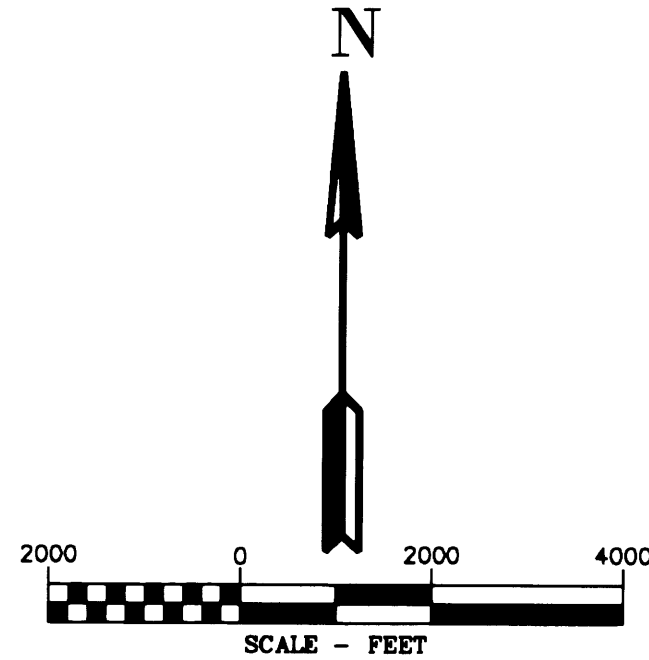


# RECORD OF SURVEY

LOCATED IN  
SECTIONS 13, 24 AND 25  
TOWNSHIP 31 SOUTH, RANGE 3 WEST, W.M.  
DOUGLAS COUNTY, OREGON

### LEGEND

- SET 5/8" X 24" REBAR WITH 1 1/4" YELLOW PLASTIC CAP (KLEIN & ASSOC. LS 59002)
- FOUND 5/8" X 24" REBAR WITH 1 1/4" YELLOW PLASTIC CAP (KLEIN & ASSOC. LS 59002) PER M166-40
- FOUND 5/8" X 24" REBAR WITH 1 1/4" YELLOW PLASTIC CAP (PRIMM LAND SURVEYING, INC. LS 48490) PER M166-40
- ⊙ FOUND 5/8" X 24" REBAR WITH 1 1/4" YELLOW PLASTIC CAP (DYER PARTNERSHIP LS 2340) PER M166-40
- FOUND MONUMENT OF RECORD, SEE CORNER NOTES
- COMPUTED POINT, NOT MONUMENTED
- ⊠ FOUND QUARTER CORNER SEE CORNER NOTES
- ⊞ FOUND SECTION CORNER SEE CORNER NOTES
- ⊞ COMPUTED QUARTER CORNER
- ⊞ COMPUTED SECTION CORNER
- △ CORNER SEARCHED AND NOT FOUND
- (100000) POINT NUMBER
- {XXX.XX'} GROUND DISTANCE
- (XXX.XX') RECORD DISTANCE PER REFERENCED SURVEY
- R1 REFERENCED SURVEY
- PROPOSED ALIGNMENT
- TEMPORARY CONSTRUCTION EASEMENT
- TEMPORARY WORK AREA



### NOTE:

DISTANCES ARE IN US SURVEY FEET.  
MEAN MERIDIAN CONVERGENCE ANGLE = -1'42.52"

### BASIS OF BEARINGS NOTE:

THE PROJECT DATUM IS BASED ON PREVIOUSLY ESTABLISHED PROJECT CONTROL.  
THE DATUM IS VERY CLOSE BUT NOT EXACTLY OREGON SOUTH ZONE 3602  
THE PROJECT BEARINGS MATCH THE OREGON SOUTH ZONE 3602 BEARINGS

### SCALE FACTOR NOTE

THE DISTANCES SHOWN ON THIS SURVEY ARE GRID DISTANCES UNLESS NOTED.  
THE COMBINED SCALE FACTOR = 0.999775443  
TO CONVERT FROM GRID TO GROUND MULTIPLY THE DISTANCE BY 1.000224607.

EXAMPLE: 300.00' GRID DISTANCE  
300.00' x 1.000224607 = 300.07' GROUND DISTANCE.

### REFERENCE SURVEYS:

- 1) RECORD OF SURVEY NO. M79-20 - MAY 22, 1980
- 2) RECORD OF SURVEY NO. M79-43 - JUNE 9, 1980
- 3) RECORD OF SURVEY NO. 166-29 - FEBRUARY 9, 2015
- 4) ORIGINAL GLO PLAT, TOWNSHIP 31 SOUTH, RANGE 3 WEST - JUNE 29, 1895
- 5) RECORD OF SURVEY NO. M166-40 - AUGUST 17, 2015

### SHEET INDEX:

- SHEET 1 = SURVEY OVERVIEW
- SHEET 2 = NE 1/4 SECTION 13
- SHEET 3 = SE 1/4 SECTION 13
- SHEET 4 = NW 1/4 SECTION 25

### NARRATIVE

THE PURPOSE OF THIS SURVEY IS TO MONUMENT THE ADMINISTRATIVE LINE BETWEEN THE U.S. FOREST SERVICE AND THE BLM IN SECTIONS 13 AND 25 AT THE INTERSECTION WITH THE TEMPORARY CONSTRUCTION CORRIDOR FOR THE WILLIAMS PACIFIC CONNECTOR GAS LINE. THIS SURVEY IS LOCATED IN TOWNSHIPS 31 SOUTH, RANGES 3 WEST, OF THE WILLAMETTE MERIDIAN.

RECORD OF SURVEY FILED AS COUNTY SURVEY M166-40 SHOWS THE CORRIDOR WITH THE FEDERAL OWNERSHIP IN TOWNSHIP 31 SOUTH RANGE 3 WEST, OF THE WILLAMETTE MERIDIAN.

ALL OF THE INFORMATION SHOWN ON SAID RECORD OF SURVEY NO. M166-40 HAS REMAINED THE SAME.

THE PUBLIC LAND SURVEY SYSTEM MONUMENTS WERE FOUND AND TIED BY KLEIN & ASSOCIATES AND VERIFIED BY DOUG POPHAM A CERTIFIED FEDERAL SURVEYOR.

THE TEMPORARY CONSTRUCTION EASEMENT WAS SURVEYED AND MONUMENTED BY THE DYER PARTNERSHIP ENGINEERS & PLANNERS, INC. AND PRIMM LAND SURVEYING, INC.

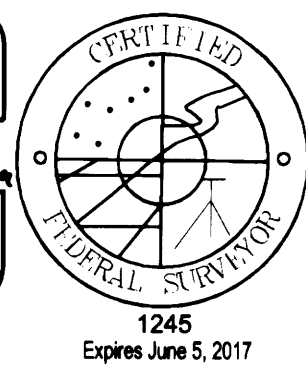
THE INTERSECTION OF THE TEMPORARY CONSTRUCTION EASEMENT AND THE FEDERAL LANDS WERE MONUMENTED BY KLEIN & ASSOCIATES.

### SURVEYOR'S CERTIFICATE

I, DOUGLAS A. POPHAM BEING DULY SWORN AS A PROFESSIONAL LAND SURVEYOR IN THE STATE OF OREGON, ALSO BEING A CERTIFIED FEDERAL SURVEYOR, DO HEREBY CERTIFY THAT THIS MAP CORRECTLY REPRESENTS A SURVEY THAT I HAVE REVIEWED AND VERIFIED. THIS SURVEY CONFORMS WITH THE REQUIREMENTS OF THE STATE OF OREGON SURVEY RECORDING LAW, AS ESTABLISHED BY ORS CHAPTER 209.

FURTHERMORE, I APPROVE THE DESCRIPTIONS, DIMENSIONS AND LOCATIONS OF THE RECOVERED MONUMENTS AS DEPICTED HEREON.

*Douglas A. Popham*  
DOUGLAS A. POPHAM PLS. 2877  
CFEDS 1245

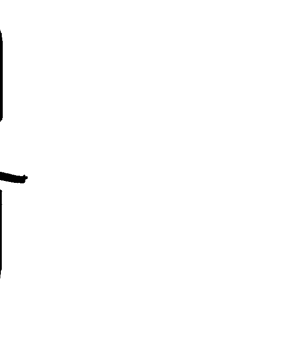


### SURVEYOR'S CERTIFICATE

I, JAMES M. KLEIN BEING DULY SWORN AS A PROFESSIONAL LAND SURVEYOR IN THE STATE OF OREGON DO HEREBY CERTIFY THAT THIS MAP CORRECTLY REPRESENTS A SURVEY CONDUCTED UNDER MY DIRECT SUPERVISION IN CONFORMANCE WITH THE REQUIREMENTS OF THE SURVEY RECORDING LAW, AS ESTABLISHED BY ORS CHAPTER 209, AND HAVE SET THE PROPER MONUMENTS AS REFERENCED IN THE LEGEND BY MY REGISTRATION NUMBER AND SEAL.

FURTHERMORE, I APPROVE THE LOCATION OF THE MONUMENTS AS DEPICTED ON THIS SURVEY DRAWING TO BE IN THEIR PROPER LOCATION.

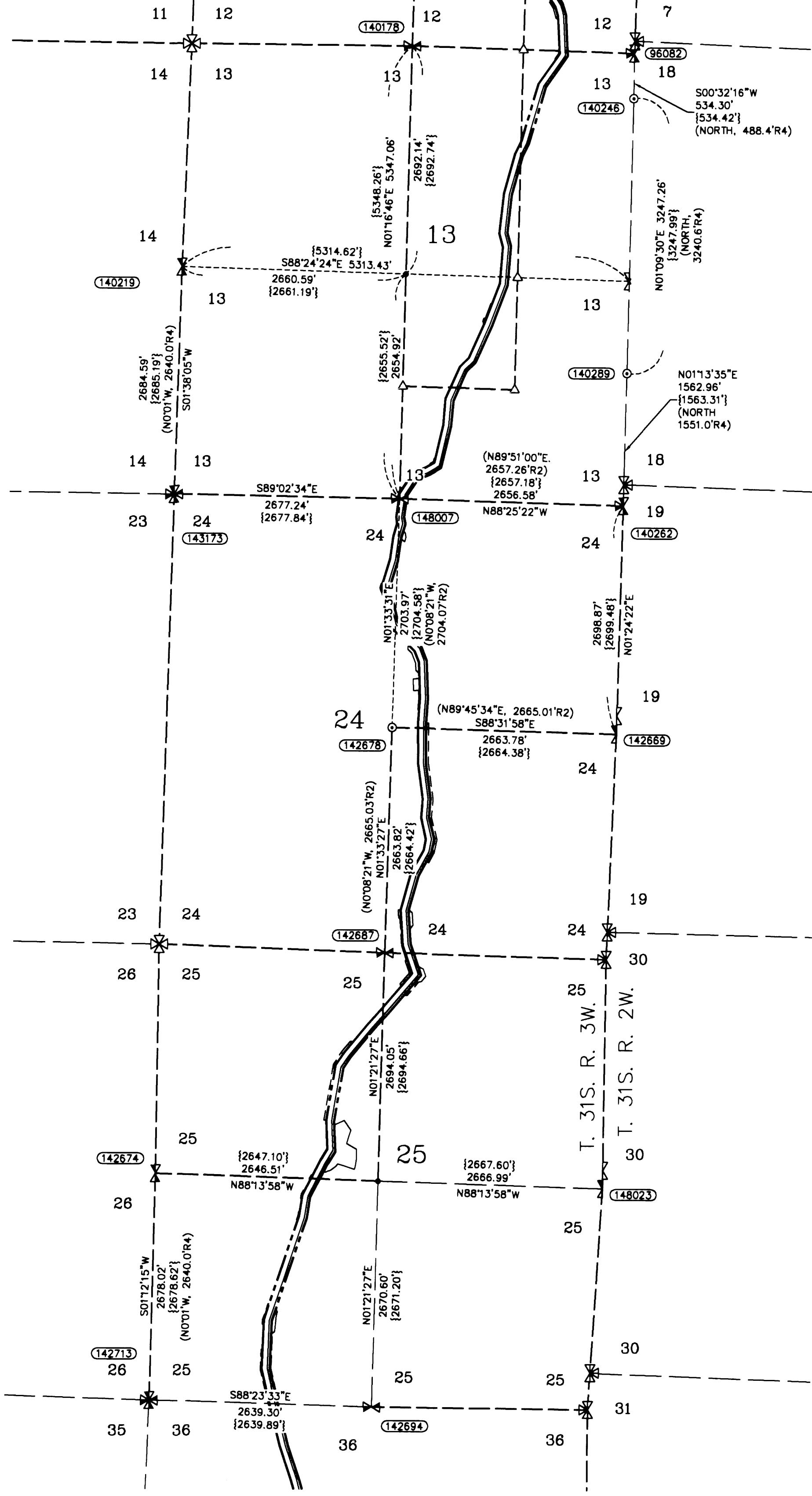
*James M. Klein*  
JAMES M. KLEIN PLS. 59002



WILLAMETTE MERIDIAN  
DOUGLAS COUNTY, OREGON

T. 31S., R. 03W
13
24
25

SURVEY PERFORMED FOR:  
WILLIAMS PACIFIC CONNECTOR  
DATE: SEPTEMBER 7, 2015  
PROJECT: 14-02-05 DRAFT: GD, LS  
FILE: RS-31S-03W-SURVEY.DWG



### CORNER NOTES:

(142682)  
NORTHEAST CORNER SECTION 13  
FOUND 3" BRASS CAP  
STAMPED PLS 944, 1979  
BT REFERENCES:  
1) FOUND 23.3" FIR WITH HEALED FACE AND TAG DATED 12/79  
N 58° E - 25.1'  
2) FOUND 5" FIR SNAG WITH VISIBLE SCRIBES  
N 39°15' W - 11.3'  
3) FOUND 59" FIR WITH HEALED FACE AND TAGS DATED 12/79 AND 1959  
N 71° W - 26.3'

(142678)  
1/4 CORNER SECTIONS 12 AND 13  
FOUND 2-1/2" BRASS CAP  
STAMPED COUNTY SURVEYORS OFFICE 1965  
BT REFERENCES:  
1) FOUND 16.5" FIR WITH HEALED FACE AND TAG DATED 11/79  
S 61° E - 25.4' TO NAIL SIDE CENTER  
2) FOUND 12.5" YEW WITH VISIBLE SCRIBES AND TAG DATED 11/19/79  
S 23°0' E - 35.4'  
3) FOUND 13.7" CEDAR WITH HEALED FACE SET TAG DATED 10/13  
N 58° E - 41.7' TO NAIL SIDE CENTER

(142619)  
1/4 CORNER SECTIONS 13 AND 14  
FOUND 2-1/2" BRASS CAP  
STAMPED COUNTY SURVEYORS OFFICE 1965  
IRON PIPE SET IN BASE OF ORIGINAL TREE TAG ON TREE DATED 1959.  
BT REFERENCES:  
1) FOUND 17" FIR ORIGINAL BT WITH HEALED FACE AND TAG DATED 11/41  
N 56° E - 15.8'  
2) FOUND 19" FIR WITH HEALED FACE AND BLM TAG DATED 1959  
S 74° E - 24.0'  
3) FOUND REMAINS OF ORIGINAL BEARING TREE NOW A STUMP  
S 88° W - 8.6'  
4) FOUND 22" FIR WITH HEALED FACE AND TAG DATED 12/65  
S 72° W - 37.6'

(142646)  
FOUND ORIGINAL LINE TREE  
FOUND 55" BURNT AND DECAYING SNAG WITH 2 VISIBLE NOTCHES ON THE NORTH PER THE ORIGINAL NOTES.  
(72.60 CHAINS NORTH OF SE CORNER OF SECTION 13)  
SET BEARING TREE TAG ON SNAG AND FLAGGED AND PAINTED THE NOTCHES.

(142628)  
FOUND ORIGINAL LINE TREE  
FOUND 41" BURNT DECAYING SNAG WITH 1 VISIBLE NOTCH ON THE NORTH AND 2 VISIBLE NOTCHES ON THE SOUTH PER THE ORIGINAL NOTES.  
(23.5 CHAINS NORTH OF SOUTHEAST CORNER OF SECTION 13)  
SET BEARING TREE TAG ON SNAG AND FLAGGED AND PAINTED THE NOTCHES.

(142626)  
SOUTHEAST CORNER SECTION 13  
FOUND 2-1/2" BRASS CAP  
STAMPED COUNTY SURVEYORS OFFICE 1966  
BT REFERENCES:  
1) FOUND 31" FIR WITH HEALED FACE AND TAG DATED 9/63 AND 7/79  
N 71-1/2° E - 16.5'  
2) FOUND 10" STANDING DEAD MADRONE WITH NOTCHED FACE AND TAGS DATED 9/63 AND 7/79  
S 29° E - 18.0'  
3) FOUND 14.5" FIR WITH VISIBLE SCRIBE SET NEW TAG  
S 80° W - 12.2'

(148007)  
1/4 CORNER SECTIONS 13 AND 24  
FOUND 2-1/2" BRASS CAP  
STAMPED COUNTY SURVEYORS OFFICE 1965  
FOUND ORIGINAL STONE NEXT TO MONUMENT  
BT REFERENCES:  
1) FOUND 17" FIR WITH HEALED FACE WITH TAG DATED 11/07  
N 59° E - 29.3'  
2) FOUND DEAD AND DOWN MADRONE WITH TAG  
S 73° E - 16.0'  
3) 23" FIR WITH HEALED FACE AND TAG DATED 7/79  
S 89° W - 114.0'  
4) FOUND 32.5" FIR SNAG WITH VISIBLE SCRIBES AND TAGS DATED 7/79 AND 7/63  
N 29° E - 41.6'

(143173)  
SOUTHWEST CORNER SECTION 13  
FOUND 3/4" IRON PIPE  
BT REFERENCES:  
1) FOUND 30" FIR WITH HEALED FACE AND TAG DATED 7/55  
N 70° E - 18.3'  
2) FOUND 36" FIR WITH HEALED FACE AND TAG DATED 1959  
S 31° W - 37.0'  
3) FOUND 20" MADRONE WITH HEALED FACE SET TAG DATED 10/14  
N 62° W - 25.2' FEET TO NAIL SIDE  
4) SET NEW BEARING TREE  
27" FIR, (MARKED - T31S R3W S24 BT)  
SET TAG DATED 10/14  
S 55° E - 11.9' TO NAIL SIDE CENTER

(142678)  
CENTER 1/4 CORNER SECTION 24  
FOUND 2-1/2" BRASS CAP  
STAMPED PLS 866, 1980  
BT REFERENCES:  
1) FOUND 25" CEDAR WITH HEALED FACE AND TAG DATED 4/80  
N 71°50' E - 126.5'  
2) FOUND 26" CEDAR WITH HEALED FACE AND TAG DATED 4/80  
S 89°48' E - 123.6'

(142659)  
EAST 1/4 CORNER SECTION 24  
FOUND 2-1/2" ALUMINUM CAP  
STAMPED PLS 866, 1980  
BT REFERENCES:  
1) FOUND 29" CEDAR WITH HEALED FACE AND TAG DATED 10/13  
S 35° W - 56.0' TO NAIL SIDE CENTER  
2) FOUND 22" FIR WITH HEALED FACE AND TAG DATED 10/13  
S 88°40' W - 55.2' TO NAIL SIDE CENTER

(142687)  
1/4 CORNER SECTIONS 24 AND 25  
FOUND 2-1/2" ALUMINUM CAP  
STAMPED PLS 866, 1980  
BT REFERENCES:  
1) FOUND 29" FIR WITH HEALED FACE AND TAG DATED 4/80  
N 51°48' E - 24.0' TO NAIL SIDE CENTER  
2) FOUND 49" FIR WITH HEALED FACE AND TAG DATED 4/80  
N 54° E - 43.5' TO NAIL SIDE CENTER  
3) FOUND 17" FIR WITH HEALED FACE AND TAG DATED 4/80  
S 48°20' E - 19.5' TO NAIL SIDE CENTER  
4) FOUND 19" FIR WITH HEALED FACE AND TAG DATED 4/80  
S 19°51' E - 18.45' TO NAIL SIDE CENTER

(142672)  
1/4 CORNER SECTIONS 25 AND 26  
FOUND 2-1/2" BRASS CAP  
STAMPED COUNTY SURVEYORS OFFICE 1966  
BT REFERENCES:  
1) FOUND 9" HEMLOCK WITH VISIBLE SCRIBES AND TAG DATED 3/10  
N 84-3/4° E - 32.9' TO NAIL SIDE CENTER  
2) FOUND 15.5" SNAG 20' TALL WITH VISIBLE SCRIBES AND TAG DATED 7/56  
S 12-1/2° E - 13.8'  
3) FOUND 34.5" FIR WITH HEALED FACE AND TAGS DATED 1966 AND 1979  
N 31° W - 6.2'

(148023)  
EAST 1/4 CORNER SECTION 25  
FOUND 2-1/2" BRASS CAP  
STAMPED COUNTY SURVEYORS OFFICE 1966  
BT REFERENCES:  
1) FOUND 4.5" DEAD YEW TREE WITH HEALED FACE AND TAG DATED 11/86  
N 44° E - 8.3' TO SIDE CENTER  
2) FOUND 7.5" HEMLOCK WITH VISIBLE SCRIBE AND TAG DATED 10/13  
S 74° W - 37.3' TO NAIL SIDE CENTER (TREE IS EXISTENT CONTRARY TO DCSO RENEWAL, 700240, 1966.)  
3) FOUND 15" YEW WITH HEALED FACE AND TAG DATED 11/56  
N 17° W - 13.9' TO NAIL SIDE CENTER

(142713)  
SOUTHWEST CORNER SECTION 25  
FOUND 2-1/2" BRASS CAP  
STAMPED COUNTY SURVEYORS OFFICE 1966  
BT REFERENCES:  
1) FOUND 29.5" FIR WITH HEALED FACE AND TAG DATED 4/66  
N 26° E - 30.0' TO NAIL SIDE CENTER  
2) FOUND ROTTEN STUMP 3' TALL AND TAG DATED 11/86  
S 76° E - 24.0'  
3) FOUND 25" CEDAR WITH HEALED FACE AND TAG DATED 7/25/79  
S 56° E - 108.4' TO NAIL SIDE CENTER  
4) FOUND 20" FIR WITH HEALED FACE AND TAG DATED 4/66  
S 68° W - 25.6'  
5) FOUND 25" FIR WITH HEALED FACE AND TAG DATED 7/23/79  
N 37-1/2° W - 23.4' TO NAIL SIDE CENTER

(142684)  
1/4 CORNER SECTIONS 25 AND 36  
FOUND 2-1/2" BRASS CAP  
STAMPED COUNTY SURVEYORS OFFICE 1966  
BT REFERENCES:  
1) FOUND 18.5" HEMLOCK WITH BLAZED FACE AND TAG DATED 10/10/13  
S 10-1/2° W - 8.5' TO NAIL SIDE CENTER  
2) FOUND 9" YEW WITH VISIBLE SCRIBES AND TAG DATED 4/66  
N 19° W - 37.2'

PACIFIC CONNECTOR GAS PIPELINE PROJECT  
PACIFIC CONNECTOR GAS PIPELINE, LP  
RECORD OF SURVEY  
SECTIONS 13, 24 AND 25  
TOWNSHIP 31 SOUTH, RANGE 3 WEST, W.M.  
DOUGLAS COUNTY OREGON

DRAWN BY: LJS	DATE: 08-25-2015	ISSUED FOR BID:	SCALE: 1" = 100'
CHECKED BY:	DATE:	ISSUED FOR CONSTRUCTION:	
APPROVED BY:	DATE:	DRAWING NUMBER:	SHEET 1 OF 4

FILED  
Date: 10-14-2015 By: SC  
This survey consists of:  
Map: M171-2 A-D  
Narrative:  
Corner rpt.

DOUGLAS COUNTY  
SURVEYOR