

# AMENDED RECORD OF SURVEY

(SURVEY M166-38A-D)  
 LOCATED IN THE SE 1/4 OF SECTION 17  
 TOWNSHIP 29 SOUTH, RANGE 4 WEST, WILLAMETTE MERIDIAN  
 DOUGLAS COUNTY, OREGON

FILED  
 Date: 5-14-2017 By: J.C.  
 This survey consists of:  
 Map: M171-29A-D  
 Corner Rpt:  
 DOUGLAS COUNTY  
 SURVEYOR

### REFERENCES:

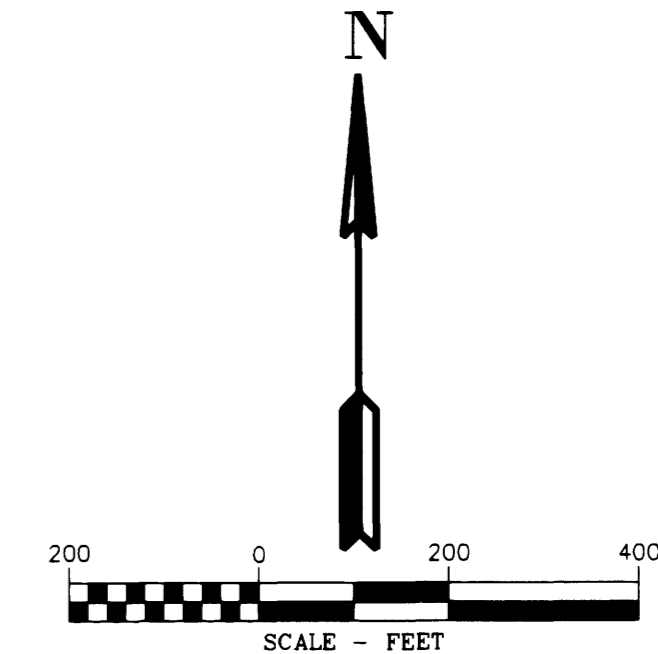
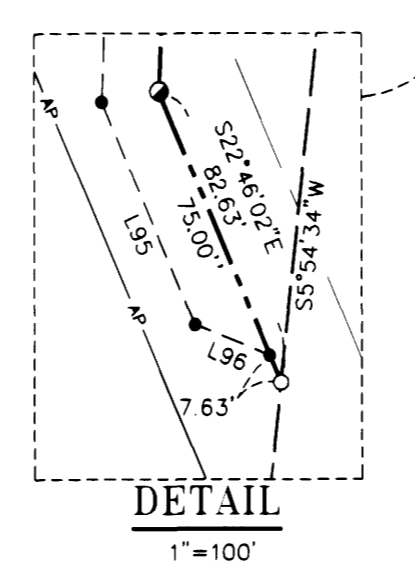
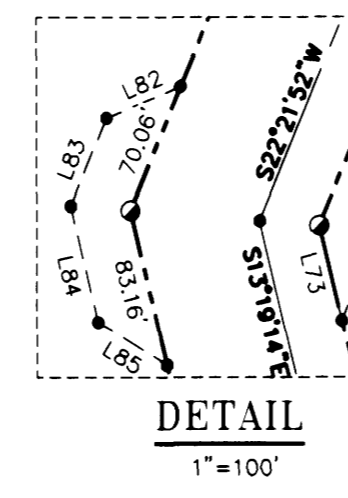
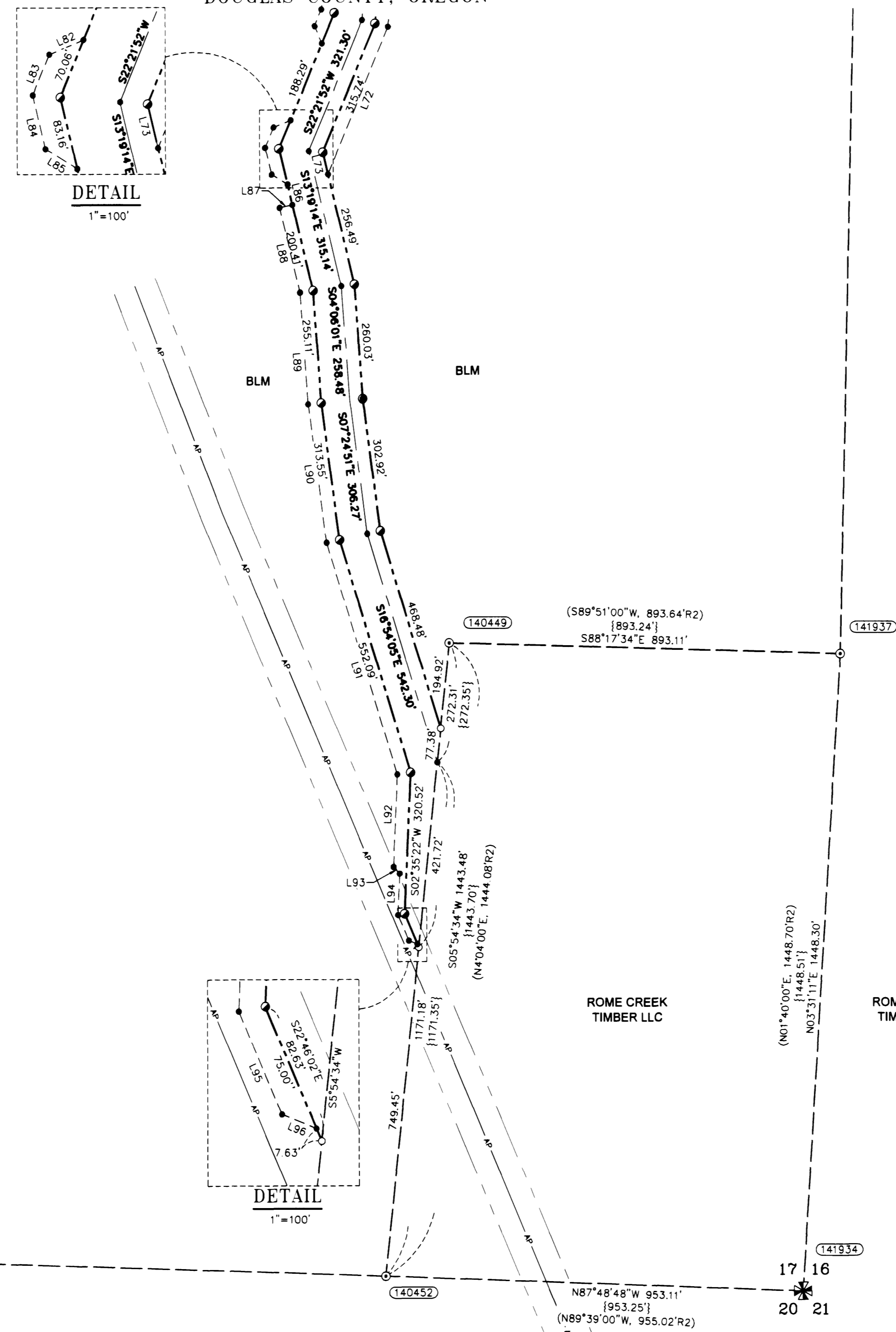
- R1) CORRECTIVE DEPENDENT RESURVEY, DEPENDENT RESURVEY AND SUBDIVISION OF SECTIONS. APPROVED MARCH 5, 1997. C.S. #1997A
- R2) DEPENDENT RESURVEY AND SUBDIVISION OF SECTIONS. APPROVED APRIL 20, 1990. C.S. #1990
- R3) LAND PARTITION FILED AS DOCUMENT NO. 2007-0087
- R4) RECORD OF SURVEY NO. M157-36
- R5) RECORD OF SURVEY NO. M166-38A-D

### CORNER NOTES:

- (140449)**  
 SOUTHEAST 1/16 CORNER SECTION 17  
 FOUND 3-1/4" BRASS DISK  
 STAMPED BLM 1987  
 BT REFERENCES:  
 1) FOUND 19" D. FIR WITH HEALED FACE WITH TAG DATED 12/87  
 S 49-1/2° E - 19.8'  
 2) FOUND 21" PONDEROSA PINE WITH HEALED FACE WITH TAG DATED 12/87  
 N 2-1/4° W - 7.9'
- (141934)**  
 SOUTHEAST CORNER SECTION 17  
 FOUND 3-1/4" BRASS DISK  
 STAMPED BLM 1969  
 BT REFERENCES:  
 1) FOUND 13" OAK WITH HEALED FACE AND TAG DATED 4/63  
 N 35° E - 37.7'  
 2) FOUND 41" FIR WITH HEALED FACE AND TAG DATED 6/57  
 S 67° E - 21.0'
- FOUND 1-1/4" IRON PIPE  
 N 20° W. 0.35'
- NOTE: NO TREES AVAILABLE IN SECTIONS 17 AND 20.
- (140452)**  
 EAST 1/16 CORNER SECTION 17  
 FOUND BRASS DISK  
 STAMPED BLM 1987  
 BT REFERENCES:  
 1) FOUND 13.5" CEDAR WITH HEALED FACE WITH TAG DATED 12/87  
 N 48°30' E - 8.4'  
 2) FOUND 23" FIR WITH HEALED FACE WITH TAG DATED 12/87  
 N 07° W - 24.5'
- (141937)**  
 SOUTH 1/16 CORNER SECTION 17 ONLY  
 FOUND 3-1/4" BRASS CAP  
 STAMPED BLM 1987  
 BT REFERENCES:  
 1) FOUND 14" CEDAR WITH HEALED FACE AND TAG DATED '87  
 S 64° W - 10.2'  
 2) FOUND 22" FIR WITH HEALED FACE AND TAG DATED '87  
 N 38° W - 39.6'

### LEGEND

- 5/8" x 24" REBAR WITH 1 1/4" YELLOW PLASTIC CAP FROM SURVEY M166-38A-D VERIFIED OR RESET THIS AMENDED SURVEY. (KLEIN & ASSOC. LS 59002)
- ⊗ 5/8" x 24" REBAR WITH 1 1/4" YELLOW PLASTIC CAP FROM SURVEY M166-38A-D VERIFIED OR RESET THIS AMENDED SURVEY. (DYER PARTNER LS 2340)
- 5/8" x 24" REBAR WITH 1 1/4" YELLOW PLASTIC CAP SURVEY M166-38A-D VERIFIED OR RESET THIS AMENDED SURVEY. (KITZ 1853LS)
- FOUND MONUMENT AS NOTED (SEE CORNER NOTES)
- COMPUTED POINT, NOT MONUMENTED
- ⊗ FOUND QUARTER CORNER SEE CORNER NOTES
- ⊗ FOUND SECTION CORNER SEE CORNER NOTES
- ⊗ COMPUTED QUARTER CORNER
- ⊗ COMPUTED SECTION CORNER
- POINT NUMBER
- {XXX.XX'} GROUND DISTANCE
- {XXX.XX'} RECORD DISTANCE PER REFERENCED SURVEY
- R1 REFERENCED SURVEY
- PROPOSED ALIGNMENT
- TEMPORARY CONSTRUCTION EASEMENT
- TEMPORARY WORK AREA
- POWER TRANSMISSION LINE



Line #	Direction	Length
L72	S22°21'49"W	361.62'
L73	S13°19'14"E	51.44'
L82	S67°21'52"W	42.43'
L83	S22°21'52"W	49.71'
L84	S13°19'14"E	62.81'
L85	S58°18'32"E	42.44'
L86	S13°19'46"E	47.25'
L87	S76°40'46"W	30.00'
L88	S13°19'13"E	197.98'
L89	S04°06'01"E	253.56'
L90	S07°24'51"E	316.90'
L91	S16°54'05"E	549.42'
L92	S02°35'22"W	210.36'
L93	S42°24'38"E	21.21'
L94	S02°35'22"W	93.38'
L95	S22°46'02"E	63.38'
L96	S67°46'02"E	21.21'

REGISTERED PROFESSIONAL LAND SURVEYOR  
 Douglas A. Popham  
 OREGON 2017-14 198  
 DOUGLAS A. POPHAM 2877  
 Expires 12-31-2018

CERTIFIED PROFESSIONAL LAND SURVEYOR  
 1245  
 Expires June 5, 2017

REGISTERED PROFESSIONAL LAND SURVEYOR  
 Richard R. Kitz  
 OREGON 2017-15 1979  
 RICHARD R. KITZ 1853  
 Expires 6-30-2017

REGISTERED PROFESSIONAL LAND SURVEYOR  
 James M. Klein  
 OREGON 2017-12 2005  
 JAMES M. KLEIN 59002  
 Expires 6-30-2017

Primm Land Surveying, Inc.  
 1340 NE 4th Street, Hermiston, OR 97838  
 TEL (541) 564-7887 FAX (541) 567-8020

EASTSIDE CONSULTANTS, INC.  
 REGISTERED PROFESSIONAL SURVEYORS  
 1411 13th Street - Hood River, OR 97031  
 TEL 541-386-3322 • FAX 541-386-2515

Klein & Associates, Inc.  
 ENGINEERING • SURVEYING • PLANNING  
 1411 13th Street - Hood River, OR 97031  
 TEL 541-386-3322 • FAX 541-386-2515

PACIFIC CONNECTOR GAS PIPELINE PROJECT  
 PACIFIC CONNECTOR GAS PIPELINE, LP  
 RECORD OF SURVEY  
 SECTION 17  
 TOWNSHIP 29 SOUTH, RANGE 4 WEST, W.M.  
 DOUGLAS COUNTY, OREGON

Pacific Connector GAS PIPELINE

DRAWN BY: LIS	DATE: 11-10-2016	ISSUED FOR BID:	SCALE: 1" = 200'
CHECKED BY:	DATE:	ISSUED FOR CONSTRUCTION:	
APPROVED BY:	DATE:	DRAWING NUMBER:	SHEET 4 OF 4