

NARRATIVE

The purpose of this survey is to determine the boundary of the properties described in Deed Reference Numbers 2014.4303 & 2014.4352 described as Lots 1 and 2, Block "M", Hassell's Addition, Lots 4, 5, and 6, Block "D", Hassell's Addition, and Lots 1, 2, and 3, Block "E", Hassell's Addition.

The East boundary of Hassell's Addition is common with West line of the Stevens D.L.C. No. 40. The position for the Northwest corner of D.L.C. No. 40 was calculated hold record distances per M57-61 and the Southwest corner of D.L.C. was found as shown establishing the West boundary.

The South line of Hassell's Addition was calculated holding the 3/4" iron rod at the Southwest corner as shown on CS42/209 and an old 3/4" iron pin at the Northeast corner of Tax Lot 100, Map 270519CA described in Deed Reference Number 2015-18743 and projected to the West boundary of D.L.C. No. 40. The Southeast corner of Lot 4, Block "D", Southeast corner of Lot 1 and the Southwest corner of Lot 3, Block "E" were calculated and set at proportionate distance along said South line.

The West line of Block "H" was established holding record monuments per CS42/209.

The Northeast corner of Block "M" was established by the 3/4" iron pipe described as the Northwest corner of Block "L", Second Addition to I.O.O.F. Cemetery. The Northwest corner of Lot 2, Block "M" was established by Douglas Avenue Estates and held.

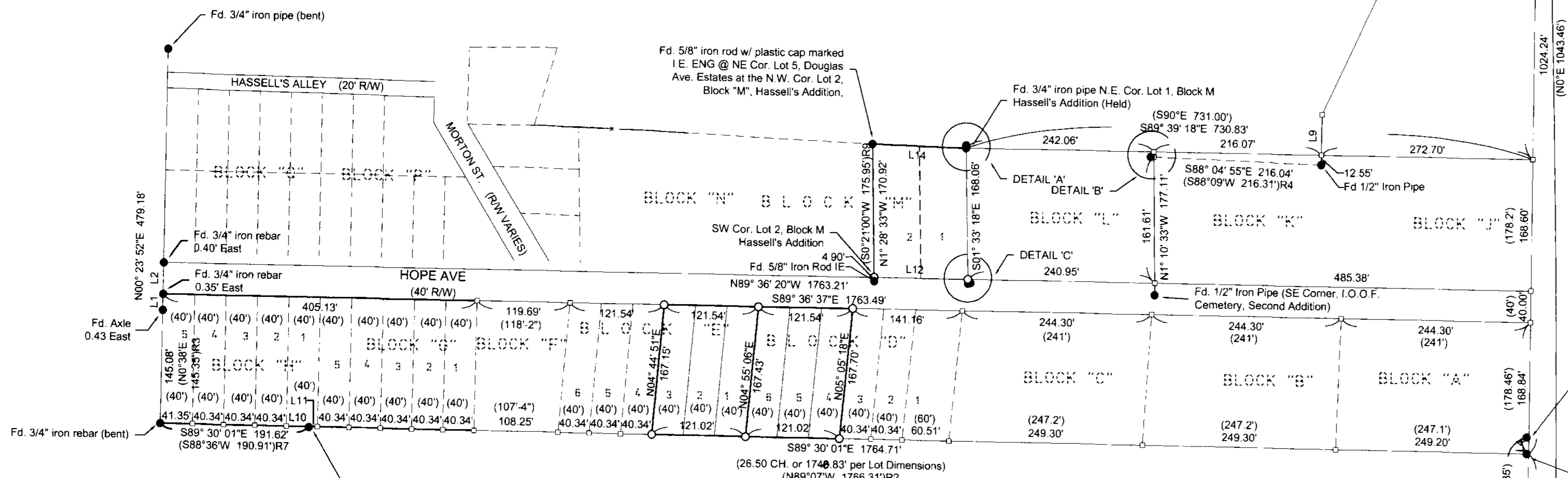
The Northeast corner of Block "J" was calculated holding record distance along the West boundary of D.L.C. No. 40 as shown on the plat of Hassell's Addition. The Southeast corner of Block "J" and the Northeast corner of Block "A" were computed at proportionate distance along said D.L.C. line. The Right of Way of Hope Avenue was demarcated between these to calculated points and the found 3/4" iron rods per CS42/209.

The Northeast corner of Lot 4, Block "D", Northeast corner of Lot 1 and the Northwest corner of Lot 3, Block "E" were calculated and set at proportionate distance along the South Right of Way line of Hope Avenue.

The West boundary of Lot 2, Block "M" was calculated by holding the Northwest corner previously described and the Southeast corner of Lot 3, Block "M" as shown in Douglas Avenue Estates. The Southwest corner of said Lot 2 was then set on the intersection of the West boundary and the North Right of Way of Hope Avenue.

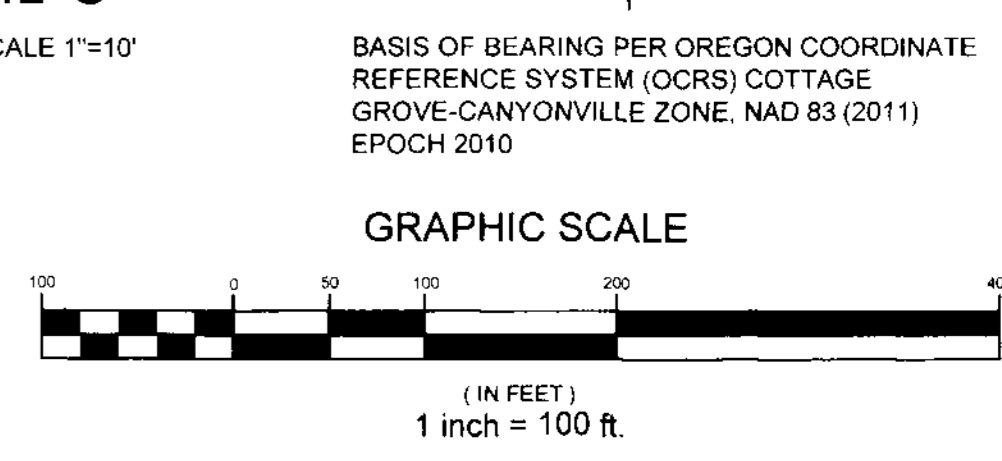
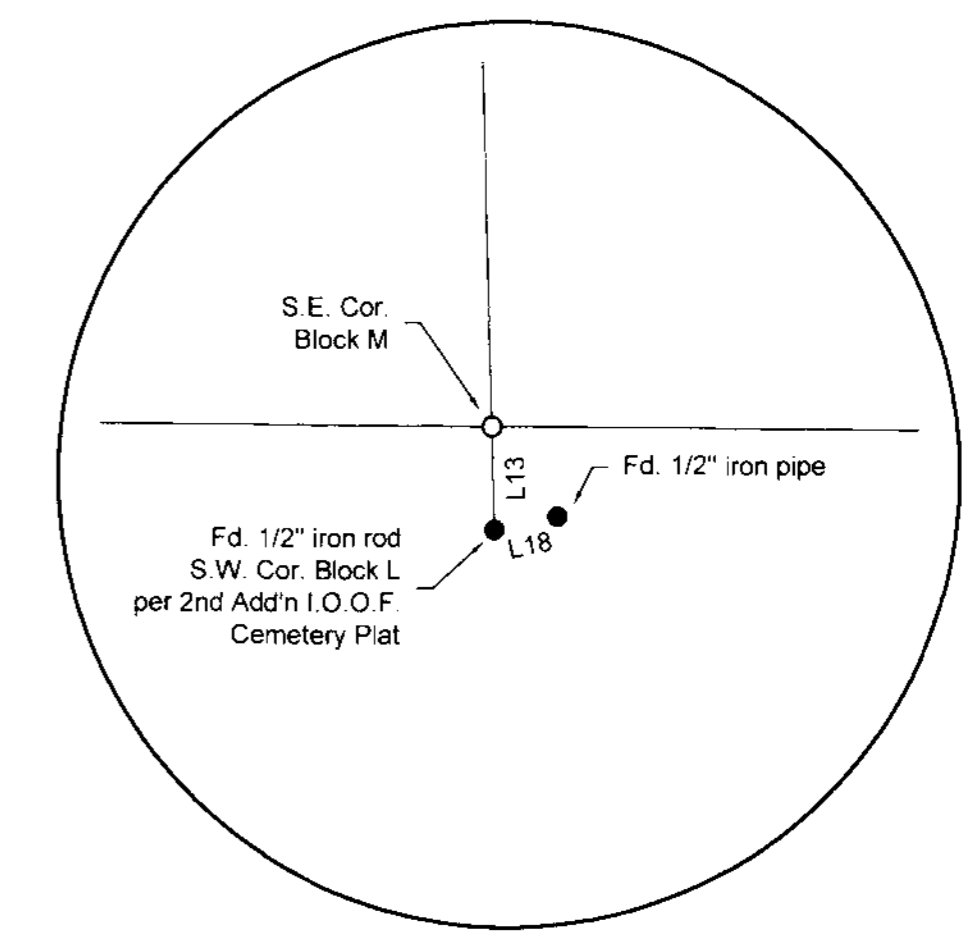
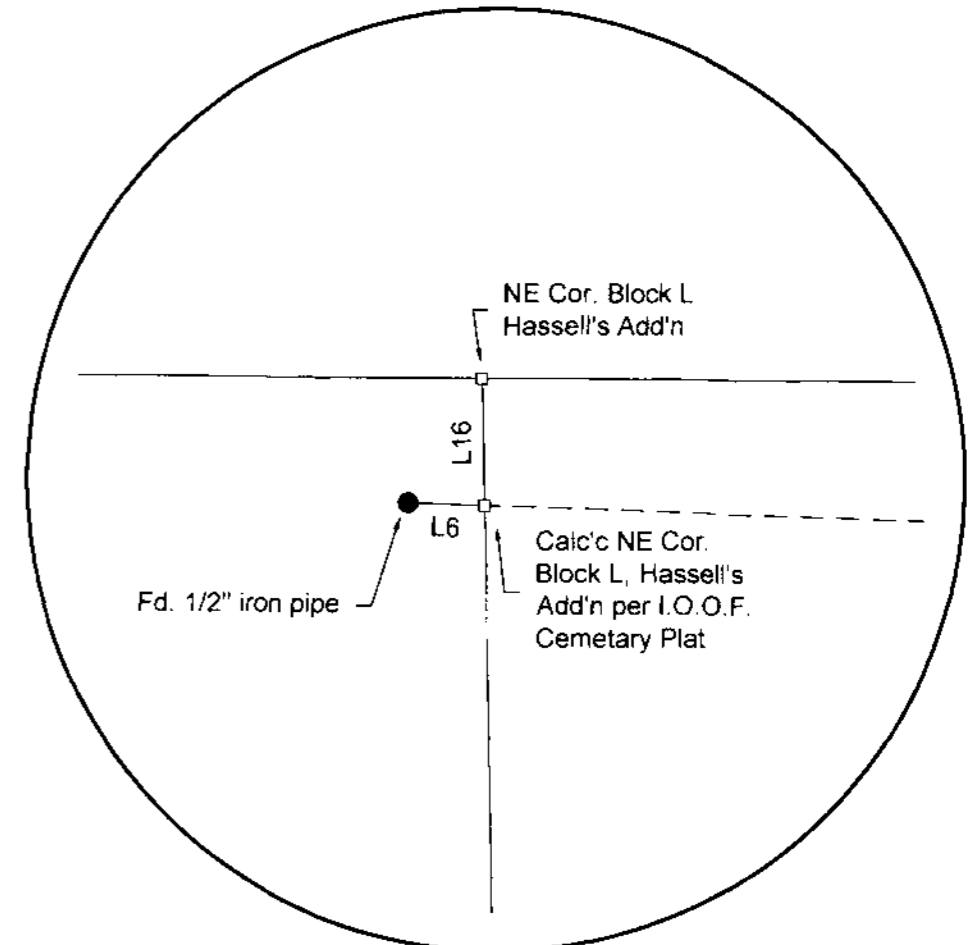
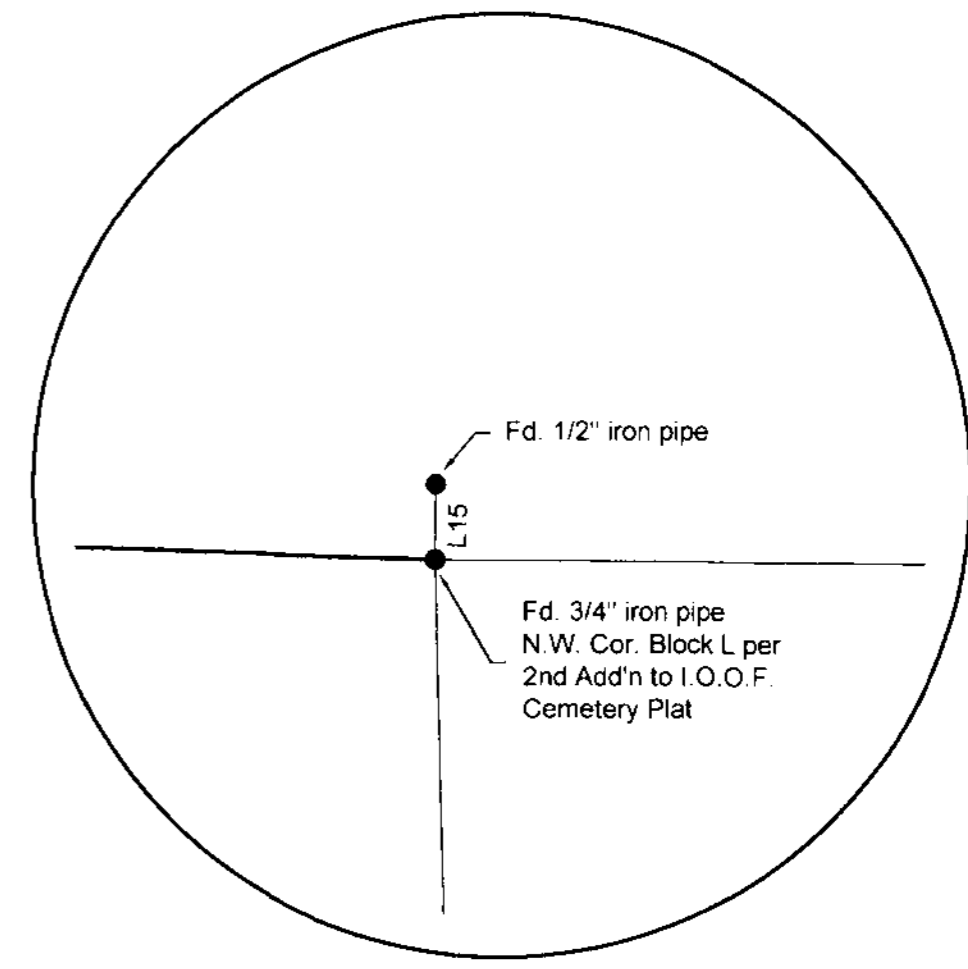
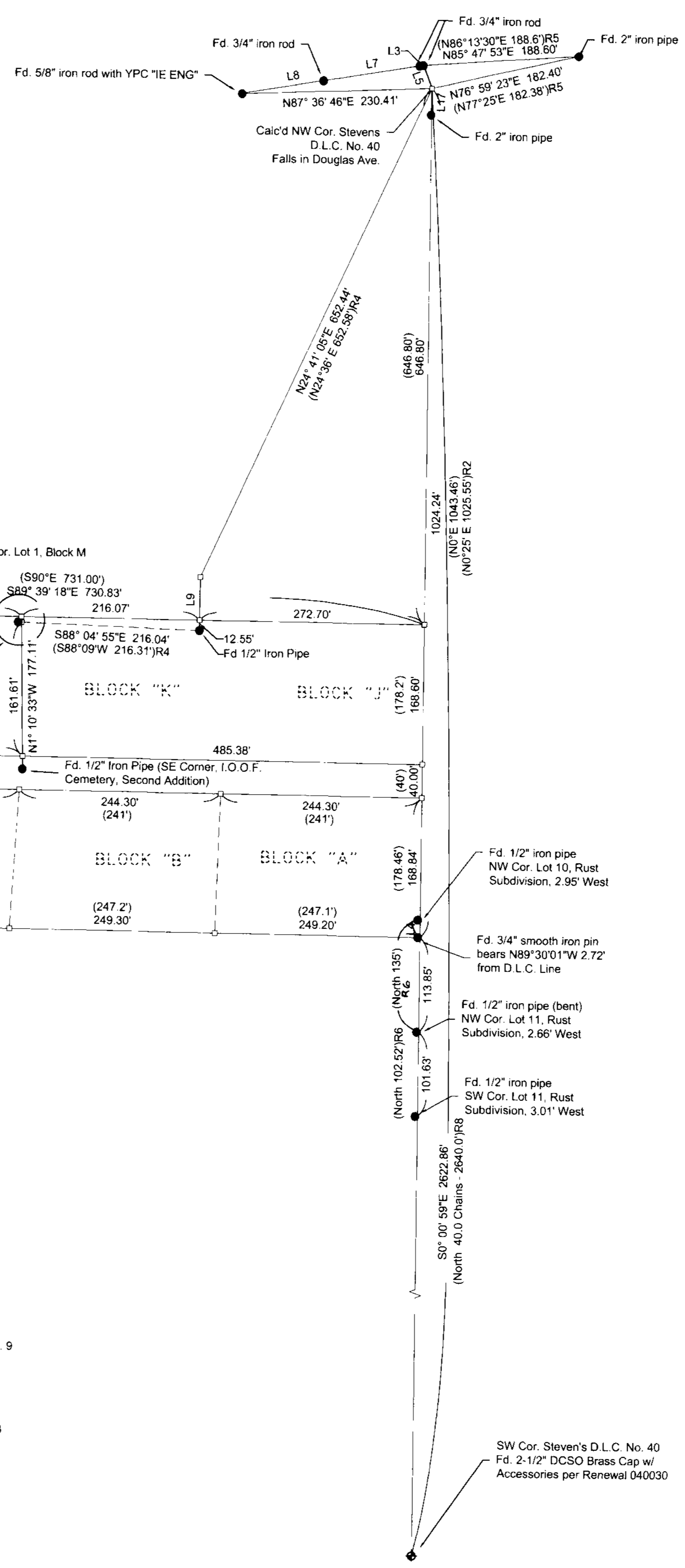
The East boundary of Block "M" was determined per the found monuments described as the Northwest and Southwest corners of Block "L", Second Addition to I.O.O.F. Cemetery and setting the Southeast corner of Block "M" at the intersection with the North Right of Way of Hope Avenue.

Equipment: Trimble R8 GPS and S6 Robotic Total Station  
 Field: Barton Heichel, PLS and Anthony Welch  
 Office: Mark Heimbürger, PLS



Line #	Length	Direction	RECORD INFO
L1	20.38	N00° 23' 52"E	(S0° 38' W 20.25') R3
L2	40.14	S00° 23' 52"W	(S0° W 40.00')
L3	4.37	S80° 36' 08"W	(S80° 56' W 4.30') R5
L4	21.20	S00° 00' 59"E	
L5	29.15	S20° 50' 54"E	(S20° 25' 05"E 29.15') R5
L6	4.00	S88° 04' 55"E	(N88° 09' W 4.0') R4
L7	118.30	S80° 30' 23"W	(S80° 56' W 118.3') R5
L8	100.00	S80° 30' 23"W	
L9	64.89	N00° 04' 00"E	(N0° 04' E 64.89') R4
L10	29.26	S89° 30' 01"E	
L11	11.08	N89° 30' 01"W	
L12	120.87	N89° 36' 20"W	(N90° W 120.00')
L13	5.39	N01° 36' 52"W	
L14	120.75	S88° 13' 52"E	(N90° W 120.00')
L15	3.93	N00° 39' 14"E	
L16	6.62	S01° 10' 33"E	
L17	32.20	S01° 02' 58"W	
L18	3.35	N78° 09' 59"E	

- LEGEND**
- Found 2 1/2" Brass Cap
  - Found monument as noted.
  - Set 5/8" x 30" reinforcing rod with YPC marked "LAND MARK PLS2287"
  - Calculated Point
  - YPC - Yellow Plastic Cap
- RECORD INFORMATION**
- ( ) HASSELL'S ADDITION TO ROSEBURG, Vol. 2, Pg. 9
  - ( ) R2 Deed Ref. No. 2015-18743
  - ( ) R3 CS 42/209
  - ( ) R4 Second Addition to I.O.O.F. Cemetery Vol. 5, Pg. 28
  - ( ) R5 M57-61
  - ( ) R6 Rust Subdivision, Vol. 8, Pg. 47
  - ( ) R7 M45-56
  - ( ) R8 Donation Land Claim No. 40 by Addison R. Flint, Contract #28, dated July 1954
  - ( ) R9 Douglas Avenue Estates, Vol. 20, Pg. 53



Sheet 1 of 1

**RECORD OF SURVEY**  
 In the NE 1/4 & NW 1/4, Section 19  
 Township 27 South, Range 5 West, W.M.  
 Douglas County, Oregon  
 July, 2016

REGISTERED PROFESSIONAL LAND SURVEYOR  
 Mark A. Heimbürger  
 OREGON  
 JULY 15, 1987  
 MARK A. HEIMBURGER  
 2287  
 RENEWS JUNE 30, 2017

FOR: Nancy Waugh  
 4394 Fir Dell Drive SE  
 Salem, OR 97302

**Land Mark Surveying, Inc.**  
 3317 N.E. Stephens St. #Roseburg, Oregon 97470  
 Office (541) 877-9400 #Fax (541) 877-9401  
 LM PLS No. 2015-0942