

FILED
Date: 7-1-2016 By: J.C.
This survey consists of:
Map: M171-12 A & B
Narrative:
Corner Rpt.:
DOUGLAS COUNTY
SURVEYOR



PURPOSE:

THE PURPOSE OF THIS SURVEY IS TO MONUMENT PROPERTY CORNERS IN SECTION 5, T31S R05W AND MARK AND POST THE COW CREEK BAND OF UMPQUA TRIBE OF INDIANS PROPERTY BOUNDARY AS SHOWN.

NARRATIVE:

CORNERS OF RECORD WERE TIED BY CLOSED TRAVERSE. THE NORTH 1/4 CORNER OF SECTION 5 HAD NEVER BEEN SET. IT WAS SET BY THE CARDINAL EQUIVALENT BETWEEN THE NW CORNER AND THE NE CORNER OF SECTION 5. THE WEST LINE WAS SURVEYED BY A.R. EVANS IN 1955 M12-15. BLM GAVE US AN OPINION THAT THIS WAS DONE BY THE PROPER METHOD. THE SECTION WAS THEN SUBDIVIDED ACCORDING TO THE MANUAL OF SURVEYING INSTRUCTIONS 2009. CORNERS AND BEARING TREES WERE SET AND MARKED PER THE 2009 MANUAL.

LEGEND:

- ◆ FOUND BRASS CAP
- FOUND 3/4" IRON ROD (UNLESS OTHERWISE NOTED)
- SET 5/8"x30" IRON ROD WITH 2" ALUMINUM CAP
- △ CALCULATED POINT

RECORD INFORMATION:

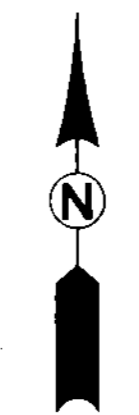
- (R1) 1855 USGLO PLAT No.685 (T30S R5W)
- (R2) 1878 USGLO PLAT No.688 (T31S R5W)
- (R3) BLM RESURVEY 1970 PLAT No.5459
- (R4) M12-15
- (R5) M1-9
- (R6) M146-53
- (R7) M166-22
- (R8) MINERAL SURVEY NO. 794 1916

FIELD CREW: NOLAN FROMDAHL, RICHARD OLSON, & DAVID MANRING

EQUIPMENT: NIKON TOTAL STATION AND TDS RANGER DATA COLLECTOR AND TOPCON HYPER LITE GPS

OFFICE: RONALD QUIMBY

DRAFTING: DAVID MANRING



SURVEYED BY: 809 SE Pine Street Roseburg, Oregon 97470 PHONE (541) 673-0166 FAX (541) 440-9392 email@ieengineering.com	SURVEYED FOR: COW CREEK INDIANS 237 NE STEPHENS ST. ROSEBURG, OR 97470	DWG. BY:DTM	PAGE: 1 OF 2 JOB NO:0324-38	SCALE: 1" = 300' 	RECORD OF SURVEY LYING IN SECTION 5, TOWNSHIP 31 SOUTH, RANGE 05 WEST, WILLAMETTE MERIDIAN, DOUGLAS COUNTY, OREGON
		PM:RAQ SCALE: AS NOTED			

REGISTERED PROFESSIONAL LAND SURVEYOR

Ronald A. Quimby

OREGON
JUL 19, 1978
RONALD A. QUIMBY
1954

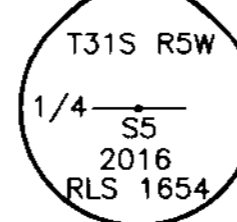
EXPIRES: 12/31/2016

④ N 1/4 CORNER SECTION 5 ONLY

SET 5/8"x30" IR WITH 2" ALUMINUM CAP MARKED "1/4 S5 2016 RLS 1654"

NEW BEARING TREES:

18" D FIR S63°W, 28.4' SCRIBED "1/4 S5 BT".
12" D FIR S07°E, 21.1' SCRIBED "1/4 S5 BT".
14" D FIR N51°W, 22.5' SCRIBED "1/4 S5 BT".
8" D FIR N82°E, 27.3' SCRIBED "1/4 S5 BT".



⑤ SOUTH CLAIM CORNER

FOUND 1968 USBLM BRASS CAP STAMPED "C794 S5 S4 CC 1968"

FOUND BEARING TREES:

56" FIR S19°E, 144.5' WITH GOOD SCAR.
40" FIR SNAG S45°W, 235.0' WITH GOOD SCAR.

NEW BEARING TREE:

7" D FIR S32°W, 23.6' SCRIBED "T31S R5W S5 CC BT".

⑥ N 1/16 CORNER SECTIONS 5 & 6

FOUND 3/4 IRON ROD PER M12-15

FOUND BEARING TREES:

12" MADRONE S15°W, 32.4' GOOD SCAR.
10" MADRONE S52°E, 22.5' SNAG.

NEW BEARING TREES:

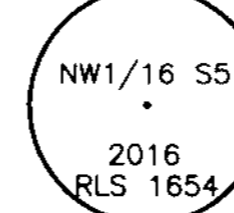
10" D FIR S80°E, 13.6' SCRIBED "N1/16 S5 BT".

⑩ NW 1/16 CORNER SECTION 5

SET 5/8"x30" IR WITH 2" ALUMINUM CAP MARKED "NW 1/16 S5 2016 RLS 1654"

NEW BEARING TREES:

12" D FIR S83°W, 22.7' SCRIBED "NW1/16 BT".
14" D FIR S13°W, 25.6' SCRIBED "NW1/16 BT".

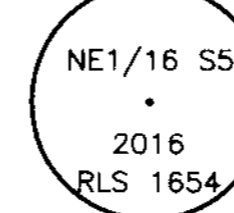


⑪ NE 1/16 CORNER SECTION 5

SET 5/8"x30" IR WITH 2" ALUMINUM CAP MARKED "NE 1/16 S5 2016 RLS 1654"

NEW BEARING TREES:

4" D FIR N28°E, 21.9' SCRIBED "NE1/16 BT".
10" D FIR N89°W, 7.7' SCRIBED "NE1/16 BT".



⑫ N 1/16 CORNER SECTION 5 & 4

FOUND BRASS CAP PER 1966-1968 BLM RESURVEY

FOUND BEARING TREES:

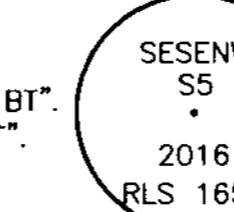
22" FIR N46°E 44.9' HEALED FACE
46" FIR N58°W 116.8' HEALED FACE
24" DIA. x 48" TALL BURNED FIR SNAG N82°W 5.9' NO VISIBLE SCRIBE

⑬ SE NW 1/64 CORNER SECTION 5

SET 5/8"x30" IR WITH 2" ALUMINUM CAP MARKED "SESENW S5 2016 RLS 1654"

NEW BEARING TREES:

14" D FIR S14°E, 12.8' SCRIBED "SESENW1/64 BT".
6" D FIR N32°E, 8.9' SCRIBED "SESENW1/64 BT".



⑭ C S N 1/64 CORNER SECTION 5

SET 5/8"x30" IR WITH 2" ALUMINUM CAP MARKED "CNS 1/64 S5 2016 RLS 1654"

NEW BEARING TREES:

12" D FIR S06°E, 18.4' SCRIBED "CNS1/64 BT".
25" PINE N62°E, 9.0' SCRIBED "CNS1/64 BT".

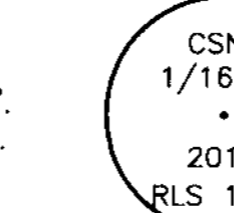


⑮ C S NE 1/64 CORNER SECTION 5

SET 5/8"x30" IR WITH 2" ALUMINUM CAP MARKED "CSNE 1/64 S5 2016 RLS 1654"

NEW BEARING TREES:

8" D FIR N66°W, 16.6' SCRIBED "CSNE1/64 BT".
4" D FIR N87°E, 23.4' SCRIBED "CSNE1/64 BT".

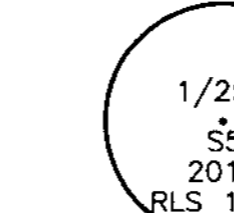


⑯ C E SE NE 1/256 CORNER

SET 5/8"x30" IR WITH 2" ALUMINUM CAP MARKED "1/256 S5 2016 RLS 1654"

NEW BEARING TREES:

12" D FIR S28°E, 22.3' SCRIBED "1/256 BT".
11" D FIR S56°E, 15.8' SCRIBED "1/256 BT".



⑰ S N 1/64 CORNER SECTIONS 5 & 4

FOUND BRASS CAP PER 1966-1968 BLM RESURVEY

FOUND BEARING TREES:

18" MADRONE S15°E 46.5' HEALED FACE
31" FIR S40°W 55.4' HEALED FACE

⑱ 1/4 CORNER SECTIONS 5 & 6

FOUND 1966 DCSO BRASS CAP

FOUND BEARING TREES:

16" MADRONE N67°W, 13.2' WITH VISIBLE SCRIBE.
28" D FIR S32°E, 44.8' WITH GOOD SCAR.
10" DOWNED OAK N59°E, 19.8'.

NEW BEARING TREES:

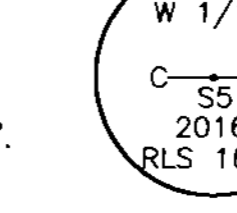
4" D FIR S51°W, 22.8' SCRIBED "1/4 S6 BT".
8" CEDAR N04°E, 43.8' SCRIBED "1/4 S5 BT".

⑲ CW 1/16 CORNER SECTION 5

SET 5/8"x30" IR WITH 2" ALUMINUM CAP MARKED "W 1/16 C-C S5 2016 RLS 1654"

NEW BEARING TREES:

6" D FIR N35°W, 16.2' SCRIBED "CW1/16 BT".
12" D FIR S63°W, 43.5' SCRIBED "CW1/16 BT".

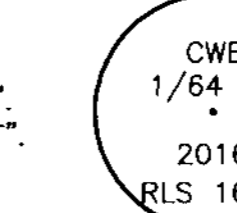


⑳ C E W 1/64 CORNER SECTION 5

SET 5/8"x30" IR WITH 2" ALUMINUM CAP MARKED "CWE 1/64 S5 2016 RLS 1654"

NEW BEARING TREES:

9" D FIR S12°W, 20.0' SCRIBED "CWE1/64 BT".
10" D FIR N24°E, 14.7' SCRIBED "CWE1/64 BT".



㉑ 1/256 CORNER

SET 5/8"x30" IR WITH 2" ALUMINUM CAP MARKED "1/256 S5 2016 RLS 1654"

NEW BEARING TREES:

9" D FIR N33°E, 13.1' SCRIBED "1/256 BT".
16" D FIR S15°E, 13.1' SCRIBED "1/256 BT".



㉒ 1/4 CORNER SECTION 5 & 4

FOUND BRASS CAP PER 1966-1968 BLM RESURVEY

FOUND BEARING TREES:

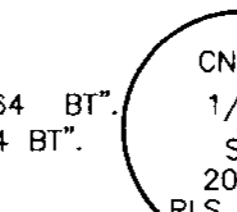
20" HEMLOCK S55°E 21.1' HEALED FACE
66" CEDAR S65°W 37.6' HEALED FACE
30" FIR N26°W 7.9' HEALED FACE
15" HEMLOCK N46°E 6.9' WITH VISIBLE SCRIBE

㉓ NE SW 1/64 CORNER

SET 5/8"x30" IR WITH 2" ALUMINUM CAP MARKED "1/256 S5 2016 RLS 1654"

NEW BEARING TREES:

13" P PINE S44°E, 33.3' SCRIBED "CNESW 1/64 BT".
18" D FIR S43°W, 45.8' SCRIBED "CNESW 1/64 BT".

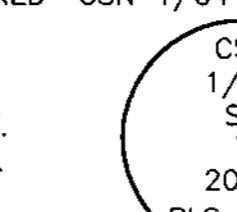


㉔ C S N 1/64 CORNER SECTION 5

SET 5/8"x30" IR WITH 2" ALUMINUM CAP MARKED "CSN 1/64 S5 2016 RLS 1654"

NEW BEARING TREES:

7" D FIR S14°W, 19.2' SCRIBED "CSN1/64 BT".
9" D FIR S60°E, 37.0' SCRIBED "CSN1/64 BT".

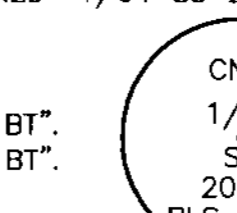


㉕ C N SE 1/64 CORNER

SET 5/8"x30" IR WITH 2" ALUMINUM CAP MARKED "1/64 S5 2016 RLS 1654"

NEW BEARING TREES:

9" D FIR S66°E, 19.3' SCRIBED "CNSE 1/64 BT".
12" D FIR S76°W, 21.6' SCRIBED "CNSE 1/64 BT".

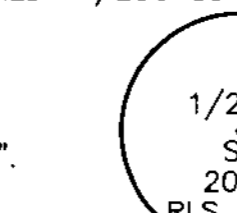


㉖ C E NE SE 1/256 CORNER

SET 5/8"x30" IR WITH 2" ALUMINUM CAP MARKED "1/256 S5 2016 RLS 1654"

NEW BEARING TREES:

8" D FIR S07°W, 16.8' SCRIBED "1/256 BT".
6" HEMLOCK N26°E, 26.1' SCRIBED "1/256 BT".



㉗ N S 1/64 CORNER SECTION 5 & 4:

FOUND BRASS CAP PER 1966-1968 BLM RESURVEY

FOUND BEARING TREES:

17" HEMLOCK S38°E 10.9' HEALED FACE
17" FIR S42°W 21.8' HEALED FACE

⑤ S 1/4 CORNER SECTION 32 ONLY

FOUND 2007 DCSO BRASS CAP

FOUND BEARING TREES/OBJECTS:

2" CHISELED "+ 80" IN ROCK OUTCROP N44°E, 6.7'.
40" D FIR SNAG NORTH, 91.6' WITH CHOPED OUT BLAZE.
12" D FIR N29°W, 32.9' WITH VISIBLE SCRIBE.
12" MADRONE S46°W, 19.3' WITH VISIBLE SCRIBE.
6" OAK BEARS S32°E, 28.3' WITH VISIBLE SCRIBE.

⑥ SECTION CORNER SECTIONS 4, 5, 32 & 33

FOUND 1959 DCSO BRASS CAP

FOUND BEARING TREES:

48" CEDAR SNAG S38°W, 100.7' WITH VISIBLE SCRIBE.
10" D FIR N13°W, 8.8' WITH VISIBLE SCRIBE.
9" D FIR N24°E, 18.0' WITH GOOD SCAR.
12" D FIR S48°E, 16.7' WITH GOOD SCAR.
6" DOWNED MADRONE N67°E, 7.2'.
8" D FIR S13°W, 7.0' WITH GOOD SCAR.

⑦ NORTH CLAIM CORNER

FOUND 1968 USBLM BRASS CAP STAMPED "CC S5 S4 C794 1968"

FOUND BEARING TREES:

30" FIR N20°E, 28.7' WITH GOOD SCAR.
6" MADRONE SNAG S73°W, 54.1' WITH NO MARKS.

NEW BEARING TREE:

4" D FIR N88°W, 15.6' SCRIBED "T31S R5W S5 CC BT".

① CC CORNER SECTIONS 5 & 6

FOUND 3/4 IRON ROD PER M12-15

FOUND BEARING TREES:

20" D FIR S59°W, 60.0' NOW UPROOTED SNAG.
32" D FIR S48°E, 54.8' WITH GOOD SCAR.

NEW BEARING TREES:

12" D FIR S54°W, 10.9' SCRIBED "T31S R5W S6 BT".
11" D FIR S32°E, 19.6' SCRIBED "T31S R5W S5 BT".
30" D FIR S81°W, 30.8' SCRIBED "T31S R5W S6 BT".

② SECTION CORNER SECTIONS 31 & 32

FOUND 2006 DCSO BRASS CAP

FOUND BEARING TREES:

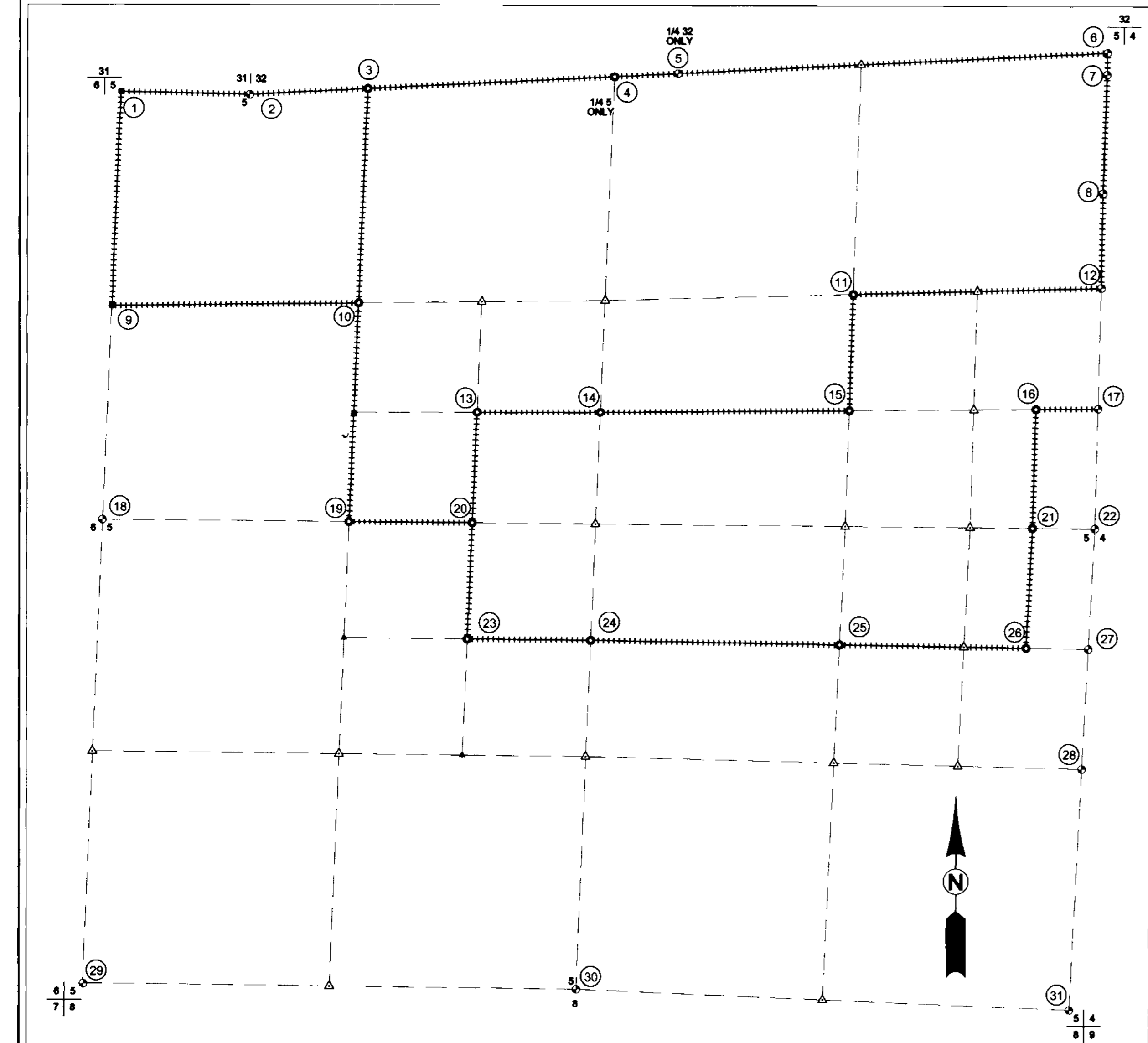
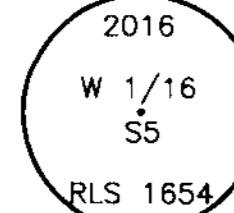
8" CHINQUAPIN N89°W, 5.8' WITH VISIBLE SCRIBE.
8" D FIR N29°W, 45.9' WITH GOOD SCAR.
8" MADRONE N04°E, 14.6' WITH VISIBLE SCRIBE.
10" D FIR N65°E, 10.9' WITH GOOD SCAR.

③ W 1/16 CORNER SECTION 5

SET 5/8"x30" IR WITH 2" ALUMINUM CAP MARKED "W 1/16 S5 2016 RLS 1654"

NEW BEARING TREES:

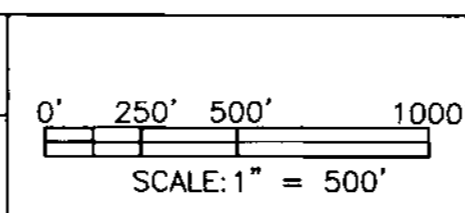
6" D FIR S73°W, 2.7' SCRIBED "W1/16 S5 BT".
6" MAPLE N74°W, 10.5' SCRIBED "W1/16 S5 BT".



SURVEYED BY:
i.e. ENGINEERING
809 SE Pine Street
Roseburg, Oregon 97470
PHONE (541) 673-0166
FAX (541) 440-9392
email@engineering.com

SURVEYED FOR:
COW CREEK INDIANS
237 NE STEPHENS ST.
ROSEBURG, OR 97470

DWG. BY:DTM
PM:RAQ
SCALE: AS NOTED
PAGE: 2 OF 2
JOB NO:0324-38
DATE: JUNE 2016



RECORD OF SURVEY
LYING IN SECTION 5,
TOWNSHIP 31 SOUTH, RANGE 05 WEST, WILLAMETTE MERIDIAN, DOUGLAS COUNTY, OREGON

REGISTERED
PROFESSIONAL
LAND SURVEYOR
OREGON
JULY 14, 1978
RONALD AL GUMBY
1054
EXPIRES: 12/31/2016