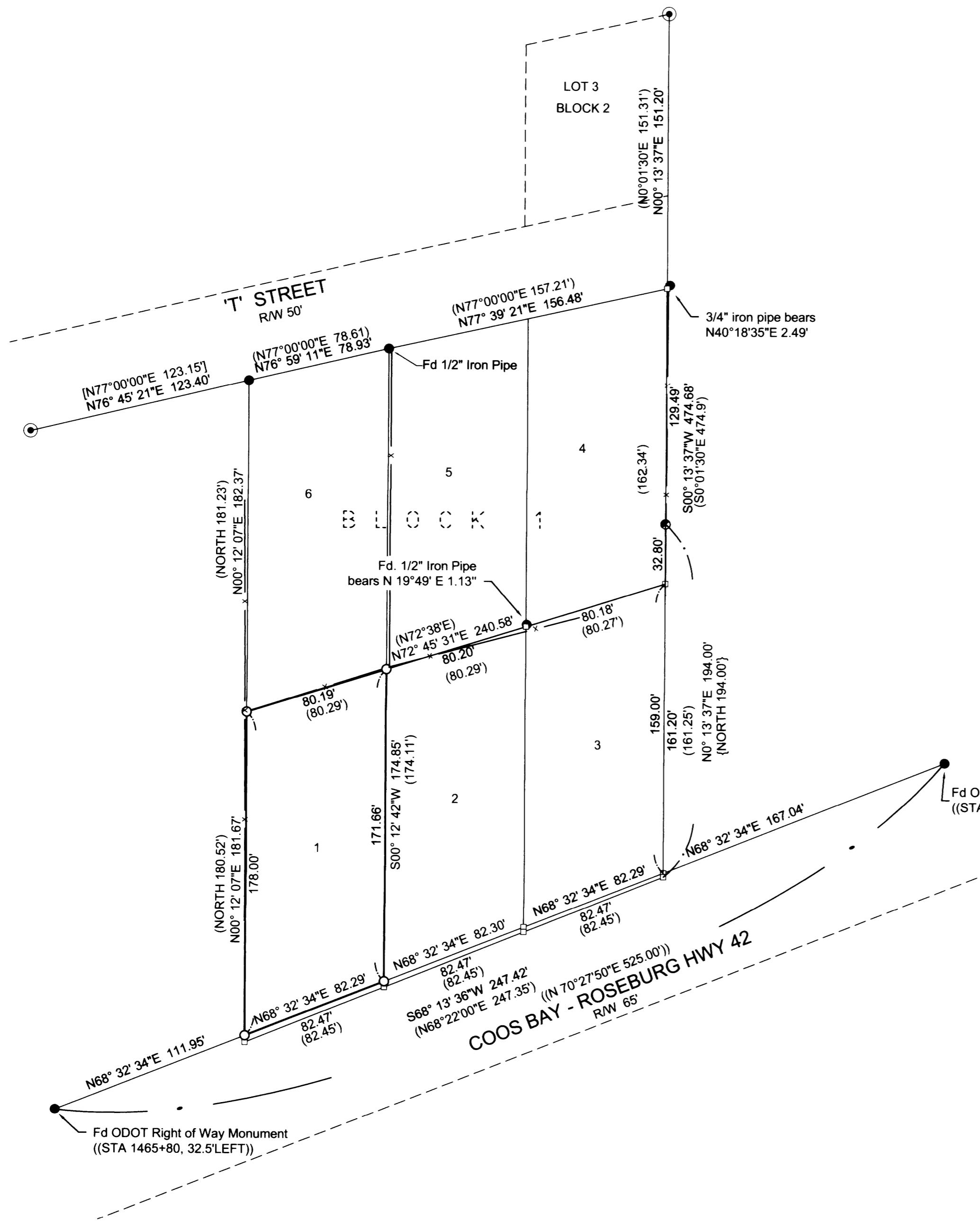


FILED
 Date: 5-5-2016 By: JC
 This survey consists of:
 Map: H170-71
 Narrative:
 Corner Rpt:

DOUGLAS COUNTY
 SURVEYOR

MAP FILE H170-71



NARRATIVE:

The purpose of the survey is to monument the corners of Lot 1, Block 1, Gurney Addition as recorded in Volume 9, Page 31 of the official plat records of Douglas County.

The Southwest corner of Lot 1 was calculated per record information per ODOT recovery survey ST. HWY. 42-009. The Northwest corner was computed at proportional distance between the Southwest of Lot 1 and the Northwest of Lot 6.

In order to compute the Southeast corner of Lot 1, the Southeast corner of Block 1 was calculated by projecting the East line of Lot 4, Block 1 record distance as determined holding the Northwest corner of Parcel 2, M85-64 and the Northeast of Lot 3, Block 2. The Southeast corner of Lot 1 was proportioned.

The Northwest corner of Lot 1 was computed by first calculating the Northeast corner of Block 1 holding the computed Southeast corner of the Block and the Northeast of Lot 3, Block 2 and proportioning Northeast of Block 1. The Northeast corner of Lot 3, Block 1 was calculated at proportionate distance. The Northeast of Lot 1, Block 1 was then computed proportionately between the Northwest of Lot 1 and the Northeast of Lot 3.

Field Crew: Barton Heichel, PLS
Field Equipment: Trimble R10 G.P.S. System & Trimble S6 Total Station.
Office Calculations: Mark Heimbürger, PLS.

LEGEND:

- Found 3/4" iron pipe unless noted.
 - ⊙ Found 1" iron pipe
 - Found 5/8" iron rod per M85-64
 - Set 5/8" x 30" reinforcing rod with YPC marked "LAND MARK PLS2287".
 - Calculated Point
- YPC - Yellow Plastic Cap

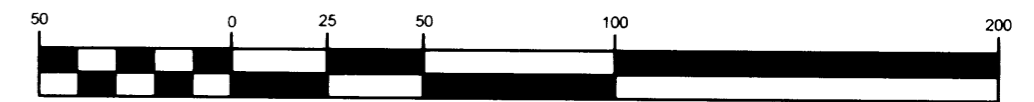
RECORD INFORMATION

- () GURNEY-ADDITION (Vol. 9, Pg.31)
- { } M 85-64
- [] GURNEY SUBDIVISION (Vol.8, Pg.13)
- (()) ST. HWY 42-12



BASIS OF BEARINGS PER OREGON COORDINATE REFERENCE SYSTEM (OCRS) COTTAGE GROVE - CANYONVILLE ZONE, NAD 83(2011) EPOCH2010.

GRAPHIC SCALE



(IN FEET)
 1 inch = 50 ft.

Sheet 1 of 1

RECORD OF SURVEY In Block 1, Gurney Addition (Vol.9, Pg. 31) In the S.W. 1/4 & N.W. 1/4, Sec. 21, T.28 S. R.6 W. W.M. Douglas County, Oregon April 23, 2016	
REGISTERED PROFESSIONAL LAND SURVEYOR <i>Mark A. Heimbürger</i> OREGON JULY 16, 1987 MARK A. HEIMBURGER 2287 RENEWS JUNE 30, 2017	Larry McKee 591 NW Douglas Blvd. Winston, Oregon 97496 Land Mark Surveying, Inc. •3317 N.E. Stephens St. •Roseburg, Oregon 97470 •Office (541) 677-9400 •Fax (541) 677-9401 LM Prog. No. 2016-0022

MAP FILE H170-71