

RECORD OF SURVEY

LOCATED IN

NE 1/4 OF SECTION 28, T. 26 S.,
R. 7 W., W.M. DOUGLAS COUNTY, OR.

FOR: LONE ROCK TIMBERLAND CO.
P.O. BOX 1127 ROSEBURG, OREGON 97470 &
SENECA JONES TIMBER COMPANY
P.O. BOX 2129 ROSEBURG, OR 97470
BY: LONE ROCK TIMBER MANAGEMENT COMPANY
P.O. BOX 1127 ROSEBURG, OREGON 97470
TRACT: CALLAHAN #1 DATE: MARCH 2016

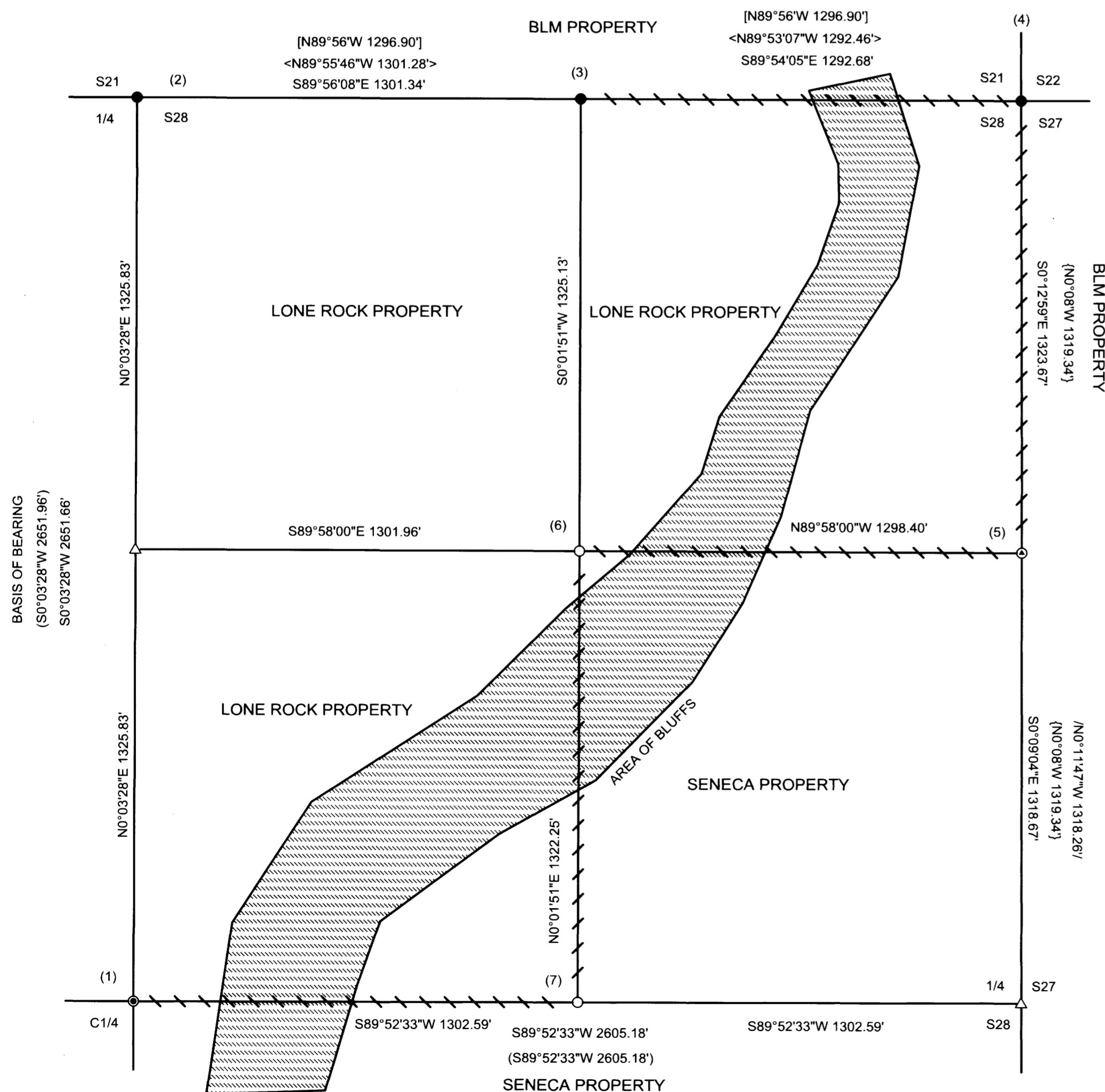
Date: 4-25-2016 By: JC
This survey consists of:
Map: M170-67
Narrative:
corner Rpt: DOUGLAS COUNTY SURVEYOR

NARRATIVE:

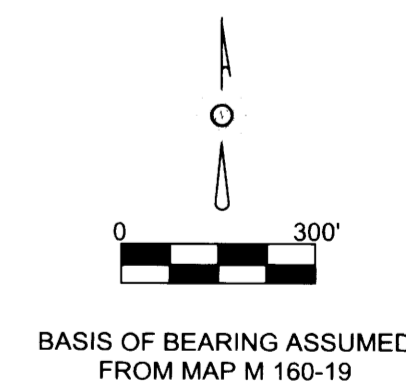
THE PURPOSE OF THIS SURVEY IS TO ESTABLISH PROPERTY CORNERS AND PROPERTY LINES FOR TIMBER MANAGEMENT PURPOSES. WE INITIATED THIS SURVEY AT THE CENTER 1/4 CORNER (1) OF SECTION 28 WITH CONTROL HUBS WE ESTABLISHED IN 2009, M160-19 IN DOUGLAS COUNTY SURVEYORS OFFICE. WE THEN COMMENCED A RANDOM CONVENTIONAL SURVEY TRAVERSE NORTHEAST TO THE EAST 1/16 (3) ON THE NORTH LINE OF SECTION 28. WE CONTINUED OUR RANDOM SURVEY EASTERLY OVER A 60 FOOT BLUFF TO THE CORNER OF SECTION 28 (4) A 1959 BLM BCIP SET FROM ORIGINAL EVIDENCE. THENCE SOUTHERLY TO THE NORTH 1/16 (5) WHICH IS A CORNER POINT THAT LIES IN A STEEP SLOUGHING SANDSTONE ROCK FACE IN A DRAW. WE COULD NOT FIND ANY EVIDENCE OF THE CORNER POINT BLM 1974 OR EDWARDS M170-16. WE COMPUTED A POSITION FOR THE N 1/16 CORNER FROM RECORD REFERENCE MONUMENTS AND PLACED TWO MORE REFERENCE PK NAILS NEAR THE CORNER IN THE ROCK FACE. WE THEN CONTINUED OUR TRAVERSE TOWARD THE NE 1/16 CORNER LOCATION ON E-W CENTERLINE OF THE NE 1/4 ENCOUNTERING AN 80' BLUFF ALONG THE PROPERTY LINE AS SHOWN. THENCE CONTINUED OUR RANDOM TRAVERSE OFFLINE SOUTHWESTERLY TO THE NORTH-SOUTH CENTERLINE OF NE 1/4. WE CONTINUED OUR RANDOM TRAVERSE TO A POSITION NEAR THE CE 1/16 CORNER. THENCE CONTINUED OUR RANDOM TRAVERSE WESTERLY TO A GPS CONTROL WE ESTABLISHED AT THE BOTTOM OF AN OPEN ROCK BLUFF EAST OF THE CENTER 1/4. WE NEXT RAN A CLOSED LOOP TRAVERSE FROM THE CENTER 1/4 TO A POINT NEAR THE POSITION OF THE NE 1/16 OF SECTION 28. WE NEXT PERFORMED A GPS CONTROL POINT SURVEY TO TIE IN THE NORTH 1/4 OF SECTION 28 AND OTHER RANDOM POINTS ESTABLISHED FROM OUR RANDOM CONVENTIONAL TRAVERSE FOR CLOSURE AND COMPUTATIONS. WE USED THE WEST LINE OF THE NE 1/4 OF SECTION 28 AS A BASIS OF BEARING WITH OUR PREVIOUS SUBDIVISION OF SECTION 28 SURVEY M160-19 TO COMPUTE THE POSITION OF THE E 1/4 OF SECTION 28 FOR THIS SURVEY. WE THEN COMPUTED THE SUBDIVISION OF THE NE 1/4 OF SECTION 28 AND SET MONUMENTS AS DESCRIBED FOR THE NE 1/16 AND THE CE 1/16 OF SECTION 28. WE THEN MARKED PROPERTY LINES ON TIMBER GROWING AREAS BETWEEN THE ROCK BLUFFS AS MUCH AS REASONABLY POSSIBLE IN THIS VERY STEEP RUGGED GROUND. THIS SURVEY WAS DONE WITH A NIKON DTM 522 TOTAL STATION AND TRIMBLE 6000 CENTIMETER GRADE GPS WITH GARY ANGIOLET, JOSH FOWLER, KADEN MCFARLAND, MIKE EDWARDS, AND DAN SAILY ASSISTING ME.

CORNER INFORMATION:

- 1) THE CENTER QUARTER CORNER FOR SECTION 28 GCDB 340240
FOUND 2 1/2" ALUMINUM CAP PER 2009 LRT SURVEY MAP M160-19
-- 11" DOUGLAS FIR BEARS S17 1/2"W 16.7 FEET AS PER RECORD FROM MAP M160-19
-- 29" DOUGLAS FIR BEARS S31 3/4"E 12.4 FEET AS PER RECORD FROM MAP M160-19
-- 23" DOUGLAS FIR BEARS N71"E 38.8 FEET AS PER RECORD FROM MAP M160-19
-- 18" DOUGLAS FIR BEARS N36"W 54.4 FEET AS PER RECORD FROM MAP M160-19
CORNER LIES APPROX. 100 FEET EAST OF GRAVEL BLM ROAD # 26-7-33.0. METAL FENCE POST APPROX. 1.0 FEET NORTH OF CORNER.
- 2) THE QUARTER CORNER BETWEEN SECTIONS 21 & 28 GCDB 340300
FOUND 1959 BLM CAP IN GOOD CONDITION
-- 1959 BLM REFERENCE CAP BEARS S33°19'E 7.5 FEET AS PER RECORD FROM MAP M160-19
-- 1959 BLM REFERENCE CAP BEARS N1°26'W 7.4 FEET AS PER RECORD FROM MAP M160-19
CORNER LIES ON SOUTH FACING SLOPE WITH REPROD UNIT TO SOUTH.
- 3) THE EAST 1/16 CORNER BETWEEN SECTIONS 21 & 28 GCDB 360300
FOUND 1959 BLM CAP IN GOOD CONDITION
-- 1959 BLM REFERENCE CAP BEARS N12°47'E 9.62 FEET (RECORD N12°54'46"E 9.7 FEET)
-- 1959 BLM REFERENCE CAP BEARS S13°21'E 9.59 FEET (RECORD S13°06'26"W 9.7 FEET)
CORNER LIES ON WESTERLY FACING SLOPE AND APPROX 150 FEET EAST OF GRAVEL BLM ROAD #26-7-33.0.
- 4) THE NORTHEAST SECTION CORNER FOR SECTION 28 GCDB 400300
FOUND 1959 BLM BRASS CAP RESTAMPED IN 1974 PER PAGE 21012 OF BLM NOTES
-- 9" DOUGLAS FIR BEARS N18 1/4"W 7.2 FEET (RECORD N16 3/4"W 7.3 FEET) HEALED FACE AND TAG
-- 6" CHINQUAPIN BEARS S33°W 11.8 FEET (RECORD S33°W 11.8 FEET) VISIBLE SCRIBING AND TAG
-- 20" DOUGLAS FIR BEARS S89 1/2"E 6.55 FEET (RECORD S89 1/2"E 6.9 FEET) HEALED FACE AND TAG
-- 17" DOUGLAS FIR BEARS N40 1/4"E 14.7 FEET (RECORD N40 1/2" 14.5 FEET) HEALED FACE AND TAG
-- DEAD MADRONE BEARS S18 1/2"E 22.9 FEET (RECORD S16"E 19.8 FEET NO MARKS AND TAG
-- DECAYED FIR STUB BEARS S86°W 16.4 FEET (RECORD S85°W 17.16 FEET) HEALED FACE AND TAG
CORNER LIES AT EAST EDGE OF MOUND OF STONES ON NORTHEAST FACING SLOPE.
- 5) THE NORTH 1/16 CORNER FOR SECTIONS 27 & 28 GCDB 400260
FOUND NO EVIDENCE OF BRASS DISK SET BY BLM IN 1974 IN PAGE 15171 OR CONCRETE NAIL WITH BRASS WASHER SET IN MAP M170-16. WE DO NOT FEEL THAT ANYTHING WE TRIED TO PUT AT TRUE CORNER LOCATION WOULD STAY AS IT IS EXTREMELY STEEP ROCK FACE IN TWO DIRECTIONS
-- 24" DOUGLAS FIR BEARS N57 1/2"E 33.0 FEET (RECORD FROM 1974 BLM NOTES N60 1/4"E 33.0 FEET) HEALED FACE AND TAG
-- 20" DOUGLAS FIR BEARS N42 E1/4"W 48.2 FEET (RECORD FROM 1974 BLM FIELD NOTES N42 1/4"W 48.2 FT. HEALED FACE AND TAG
-- FOUND EDWARDS PK NAIL IN ROCK BEARS N64°03'E 0.40 FEET
-- FOUND EDWARDS PK NAIL IN ROCK BEARS S86°41'E 4.21 FEET
-- LRT SET PK NAIL WITH BRASS WASHER BEARS S59°31'E 1.22 FEET
-- LRT SET PK NAIL WITH BRASS WASHER BEARS N13°21'W 1.50 FEET
-- FOUND METAL U-POST S25 1/4"W 1.53 FEET (RECORD SOUTH 2.0 FEET)
CORNER LIES IN ROCK HEADWALL OF SMALL DRAW
- 6) THE NORTHEAST 1/16 CORNER FOR SECTION 28 GCDB 360260
SET 5/8" X40" IRON ROD WITH 2 1/2" ALUMINUM CAP MARKED LONE ROCK TIMBER NE 1/16 S28 2016 PLS2291
-- 15" DOUGLAS FIR BEARS S82 1/2"W 9.3 FEET WE SCRIBE NE 1/16 S28 BT AND TAG TREE
-- 18" DOUGLAS FIR BEARS S56 1/4"E 6.9 FEET WE SCRIBE NE 1/16 S28 BT AND TAG TREE
CORNER LIES APPROX. 150 FEET EAST OF TOP OF MAIN CALLAHAN RIDGETOP. THERE ARE BLUFFS APPROX. 150 FEET EAST AND SOUTH OF CORNER. WE PUT A METAL U-POST APPROX. 0.5 FEET NORTH OF THE CORNER.
- 7) THE CENTEREAST 1/16 CORNER FOR SECTION 28 GCDB 360240
SET 5/8" X40" IRON ROD WITH 2 1/2" ALUMINUM CAP MARKED LONE ROCK TIMBER CE 1/16 S28 2016 PLS2291
-- 19" DOUGLAS FIR BEARS S51°E 12.0 FEET WE SCRIBE CE 1/16 S28 BT AND TAG TREE
-- 18" DOUGLAS FIR BEARS S51°W 12.95 FEET WE SCRIBE CE 1/16 S28 BT AND TAG TREE
CORNER LIES ON STEEP SOUTH FACING SLOPE ON SOUTH SIDE OF SPUR RIDGE. PUT A METAL U-POST APPROX. 0.5 FEET NORTH OF CORNER.



LEGEND	
●	FOUND 2009 2 1/2" ALUMINUM CAP PER MAP M160-19
●	FOUND 1959 BLM BRASS CAP PER BLM PLAT 971
⊙	REFERENCED CORNER WITH FOUND AND NEWLY SET PK NAILS
○	SET 5/8" X 40" IRON ROD WITH 2 1/2" ALUMINUM CAP
△	CALCULATED POSITION
	LINES BLAZED, PAINTED, FLAGGED, AND TAGGED
()	2009 HOFFINE SURVEY M160-19 FILED IN DOUGLAS COUNTY SURVEYORS OFFICE
< >	2004 BLM PLAT 7131 FILED IN DOUGLAS COUNTY SURVEYORS OFFICE
[]	1960 BLM PLAT 971 FILED IN DOUGLAS COUNTY SURVEYORS OFFICE
{ }	1974 BLM FIELD NOTES PAGE 15171 FILED IN DOUGLAS COUNTY SURVEYORS OFFICE
/ /	2015 EDWARDS SURVEY M170-16 FILED IN DOUGLAS COUNTY SURVEYORS OFFICE
	BLUFFS



REGISTERED PROFESSIONAL LAND SURVEYOR
Ken W. Hoffine
OREGON
JULY 16, 1985
KEN W. HOFFINE
2291
EXPIRES: 6/30/2017

MAP FILE M170-67

MAP FILE M170-67