

SHEET INDEX

- VICINITY MAP, NARRATIVE & REFERENCES.
- LEGAL DESCRIPTION, DETAILS AND LEGEND
- MONUMENT TABLES, CONTROL TABLE AND CURVE TABLE
- 4-5. SURVEY SHEETS

LEGEND

- FOUND MONUMENT NOTED IN TABLE (SHEET 3)
- SET MONUMENT AS NOTED IN TABLE (SHEET 3)
- CALCULATED POSITION, NO MONUMENT FOUND OR SET
- △ FOUND CONTROL NOTED IN TABLE (SHEET 3)
- ✦ FOREIGN POWER POLE
- FOREIGN GUY ANCHOR
- () RECORD DATA PER REFERENCE LIST (SHEET 1)

XXX MONUMENT NUMBER SEE SHEET 2

- BPA PROPERTY LINE
- RIGHT-OF-WAY LINE
- CENTERLINE
- x-x- BPA FENCE LINE
- x-x- FENCE LINE
- EDGE OF PAVEMENT
- PROPERTY LINE
- OP-OP- FOREIGN OVERHEAD UTILITY LINES

RECORD OF SURVEY

REEDSPORT SUBSTATION
 LYING WITHIN
 THE NE1/4NE1/4 OF SECTION 4 AND
 THE NW1/4NW1/4 OF SECTION 3 T.22S., R.12W., W.M.
 DOUGLAS COUNTY, OREGON

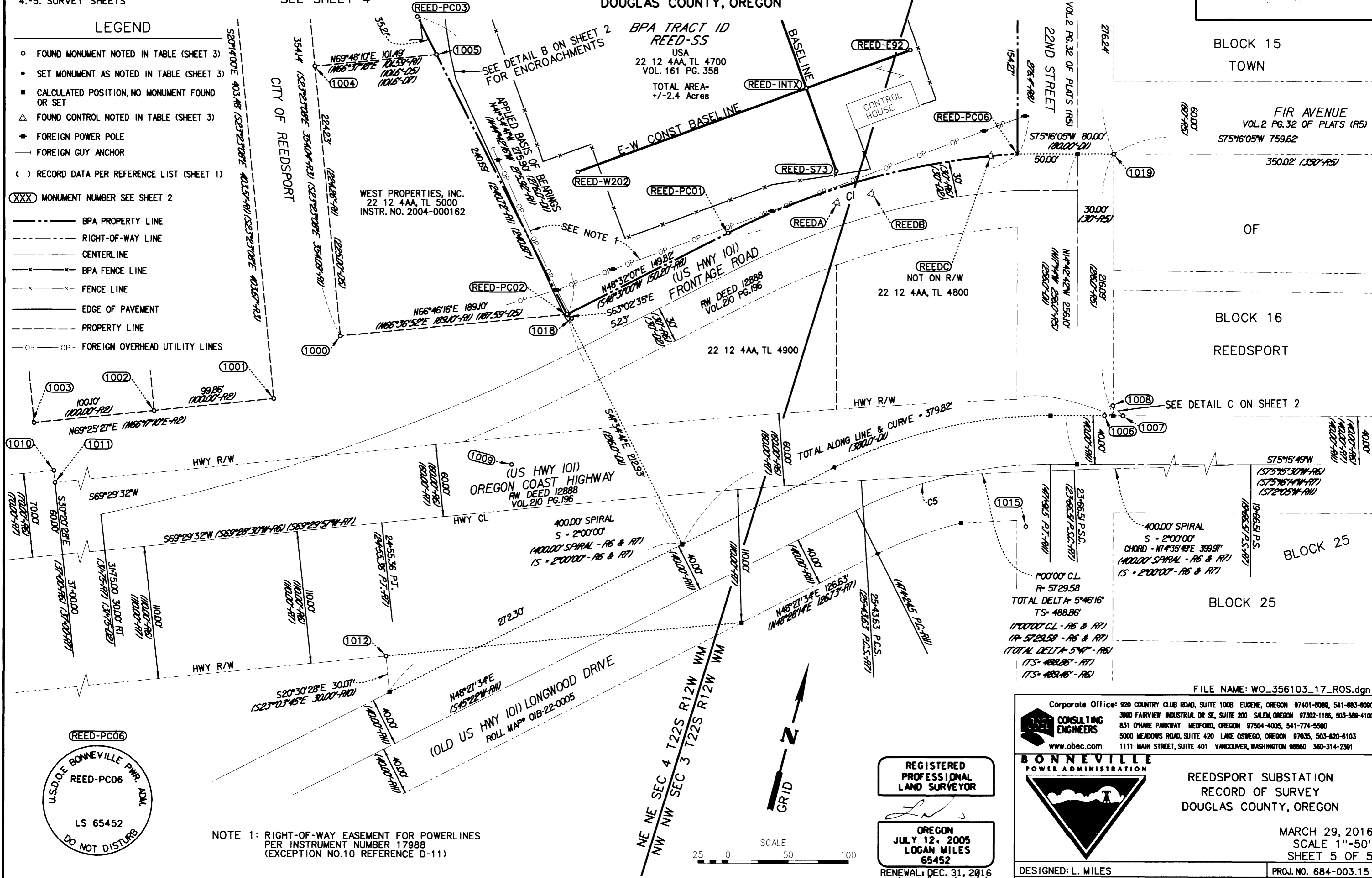
FILED

Date: 3-30-2016 By: JC
 This survey consists of:
 Map: M170-54 A-E
 Narrative:
 Control Pts:

DOUGLAS COUNTY
 2016

SEE SHEET 4

SEE SHEET 4



BLOCK 15
 TOWN

FIR AVENUE
 VOL.2 PG.32 OF PLATS (R5)
 575°16'05"W 759.62'

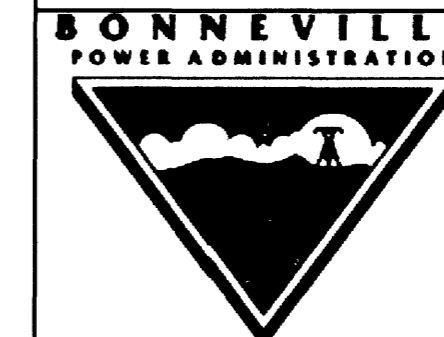
BLOCK 16
 REEDSPORT

BLOCK 25

BLOCK 25

FILE NAME: WO_356103_17_ROS.dgn

Corporate Office: 920 COUNTRY CLUB ROAD, SUITE 100B EUGENE, OREGON 97401-8088, 541-683-8090
 3880 FAIRVIEW INDUSTRIAL DR SE, SUITE 200 SALEM, OREGON 97302-1186, 503-586-4100
 831 OYARE PARKWAY MEDFORD, OREGON 97504-4005, 541-774-5590
 5000 MEADOWS ROAD, SUITE 420 LAKE OSWEGO, OREGON 97035, 503-620-6103
 1111 MAIN STREET, SUITE 401 VANCOUVER, WASHINGTON 98660 360-314-2361
 www.obec.com



REEDSPORT SUBSTATION
 RECORD OF SURVEY
 DOUGLAS COUNTY, OREGON

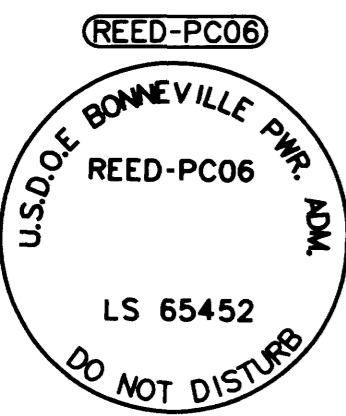
MARCH 29, 2016
 SCALE 1"=50'
 SHEET 5 OF 5

REGISTERED
 PROFESSIONAL
 LAND SURVEYOR

OREGON
 JULY 12, 2005
 LOGAN MILES
 65452

RENEWAL: DEC. 31, 2016
 Signed: 3/29/16

SCALE
 25 0 50 100



NOTE 1: RIGHT-OF-WAY EASEMENT FOR POWERLINES
 PER INSTRUMENT NUMBER 17988
 (EXCEPTION NO.10 REFERENCE D-11)

MAP FILE M170-54 E

MAP FILE No M170-54 E