

CORNER INFORMATION

1) THE CENTER QUARTER CORNER OF SECTION 30 GCDB 140240.
 FOUND 5/8" IRON ROD AS PER MAP M 52-25.
 -- 6" MADRONE BEARS S86 1/4 ° W 26.1 FEET (RECORD S86°07'W 26.0 FEET). VISIBLE SCRIBING. WE TAG.
 -- 12" CHINQUAPIN BEARS S19 1/4°E 23.4 FEET. (RECORD S18°18'E 24.9 FEET. VISIBLE SCRIBING. WE TAG.
 -- 16" DOUGLAS-FIR BEARS N83°W 32.2 FEET. WE SCRIBE C1/4 S30 BT AND TAG.
 -- 14" DOUGLAS-FIR BEARS N24 3/4°E 14.3 FEET. WE SCRIBE C1/4 S30 BT AND TAG.
 CORNER LIES ON STEEP NORTH SLOPE 0.5 FEET ABOVE GROUND LEVEL.

2) THE CENTER SOUTH 1/16TH CORNER OF SECTION 30 GCDB 140220.
 FOUND 5/8" IRON ROD AS PER MAP M 52-25.
 -- 13" DOUGLAS-FIR BEARS S56°E 32.2 FEET. WE SCRIBE CS1/16 S30 BT AND TAG.
 -- 15" DOUGLAS-FIR BEARS N 63°W 1.9 FEET. WE SCRIBE CS 1/16 S30 BT AND TAG.
 CORNER LIES ON BENCH OF WEST SLOPE 0.1 FEET ABOVE GROUND LEVEL. WE PLACE 5 1/2 FOOT METAL U-POST BESIDE.

3) PROPERTY CORNER.
 SET 5/8" X 40" IRON ROD WITH YELLOW PLASTIC CAP MARKED LONE ROCK TIMBER PLS 2291.
 -- 20" DOUGLAS-FIR BEARS S82°W 15.9 FEET. WE SCRIBE BT AND TAG.
 CORNER LIES ON WEST FACING SLOPE 0.2 FEET ABOVE GROUND LEVEL. WE PLACE 5 1/2 FOOT METAL U-POST 1.0 FEET NORTH.

4) PROPERTY CORNER.
 SET 5/8" X 40" IRON ROD WITH YELLOW PLASTIC CAP MARKED LONE ROCK TIMBER PLS 2291
 --19" DOUGLAS-FIR BEARS N6 1/2°W 10.4 FEET. WE SCRIBE BT AND TAG
 CORNER LIES ON FLAT 114 FEET SOUTH OF DIRT ROAD 0.2 FEET ABOVE GROUND LEVEL. WE PLACE 5 1/2 FOOT METAL U-POST 1.0 FEET NORTH

5) PROPERTY CORNER.
 SET 5/8" X 40" IRON ROD WITH YELLOW PLASTIC CAP MARKED LONE ROCK TIMBER PLS 2291.
 -- 20" DOUGLAS-FIR BEARS N68 3/4°W 18.1 FEET. WE SCRIBE BT AND TAG.
 CORNER LIES ON WEST SLOPE IN TIMBER 0.2 FEET ABOVE GROUND LEVEL. WE PLACE 5 1/2 FOOT METAL U-POST 1.0 FEET NORTH

6) PROPERTY CORNER.
 SET 5/8" X 40" IRON ROD WITH YELLOW PLASTIC CAP MARKED LONE ROCK TIMBER PLS 2291.
 -- 16" DOUGLAS-FIR BEARS S15 1/2°W 18.1 FEET. WE SCRIBE BT AND TAG
 CORNER LIES ON STEEP WEST SLOPE ABOVE OLD SKID TRAIL, 0.2 FEET ABOVE GROUND LEVEL. WE PLACE 5 1/2 FOOT METAL U-POST 0.5 FEET NORTH.

7) PROPERTY CORNER.
 SET 5/8" X 40" IRON ROD WITH YELLOW PLASTIC CAP MARKED LONE ROCK TIMBER PLS 2291.
 -- 15" DOUGLAS-FIR BEARS N78 1/4°W 13.4 FEET. WE SCRIBE BT AND TAG.
 CORNER LIES ON SMALL EAST WEST RIDGE 0.3 FEET ABOVE GROUND LEVEL. WE PLACE 5 1/2 FOOT METAL U-POST 0.5 FEET NORTH.

8) PROPERTY CORNER.
 SET 5/8" X 40" IRON ROD WITH YELLOW PLASTIC CAP MARKED LONE ROCK TIMBER PLS 2291.
 -- 6" DOUGLAS-FIR BEARS S15°W 19.0 FEET. WE BARK SCRIBE BT AND TAG
 CORNER LIES NEAR EDGE OF STEEP WEST SLOPE 0.3 FEET ABOVE GROUND LEVEL. WE PLACE 5 1/2 FOOT METAL U-POST 0.5 FEET NORTH.

9) PROPERTY CORNER.
 SET 5/8" X 40" IRON ROD WITH YELLOW PLASTIC CAP MARKED LONE ROCK TIMBER PLS 2291.
 -- 18" DOUGLAS-FIR BEARS S54 3/4°W 23.4 FEET. WE SCRIBE BT AND TAG.
 CORNER LIES ON WEST SLOPE 0.3 FEET ABOVE GROUND LEVEL. WE PLACE 5 1/2 FOOT METAL U-POST 0.5 FEET NORTH.

10) THE QUARTER CORNER BETWEEN SECTIONS 30 AND 31 GCDB 140200
 FOUND DOUGLAS COUNTY BRASS CAP MARKED T29S R6W S30 S31 1/4 1962.
 -- 17" DOUGLAS-FIR BEARS S81 3/4°W 18.5 FEET. WE SCRIBE 1/4 S31 BT AND TAG.
 -- 22" MADRONE BEARS S16 1/2 °E 31.2 FEET <RECORD S17°E 31.3 FEET>
 HEALED FACE AND TAG.
 -- DOUGLAS-FIR SNAG OF INDETERMINATE SIZE BEARS S20 1/2°W 21.1 FEET
 <RECORD S20°W 21.12 FEET> NO VISIBLE FACE OR SCRIBE.
 -- 16" DOUBLE MADRONE BEARS N46 3/4°W 21.7 FEET. WE SCRIBE 1/4 S30 BT AND TAG.
 -- 24" MADRONE BEARS N23 1/4°E 102.6 FEET <RECORD N24 1/2° E 100.98 FEET>
 WELL HEALED FACE AND TAG.
 -- CEDAR AT RECORD BEARING <N1° W 4.62 FEET> IS NOW ONLY A ROOT HOLE.
 CORNER LIES ON WEST SLOPE APPROXIMATELY 100 FEET EAST OF NORTH SOUTH CREEK 1.0 FEET ABOVE GROUND LEVEL. METAL U-POST AND DIORITE STONE BESIDE.

11) THE EAST 1/16TH CORNER BETWEEN SECTIONS 30 AND 31 GCDB 160200.
 FOUND BLM BRASS CAP MARKED E 1/16 S30 / S31 1980.
 -- 11" TRIPLE PACIFIC YEW BEARS N20 1/4°W 30.9 FEET <RECORD N20 1/2°W 31.68 FEET>. VISIBLE SCRIBE AND TAG.
 -- 19" DOUGLAS-FIR BEARS S18°E 42.6 FEET. WE SCRIBE E 1/16 S 31 BT AND TAG.
 -- JEEP AXLE WITH FLANGE BEARS N88 1/4°W 49.5'.
 -- UNABLE TO LOCATE RECORD 15" FIR AT RECORD <S55° E 15.51 FEET>.
 CORNER LIES ON NORTHEAST SLOPE APPROXIMATELY 140 FEET EAST AND 170 NORTH OF ROAD 0.3 FEET ABOVE GROUND LEVEL. WE PLACE 5 1/2 FOOT U-POST BESIDE.

12) THE SOUTHEAST 1/16TH CORNER FOR SECTION 30 GCDB 160220.
 SET 5/8" X 40" IRON ROD WITH ALUMINUM CAP MARKED LONE ROCK TIMBER PLS 2291 SE 1/16 S30 2015
 -- 22" DOUGLAS-FIR BEARS S9 1/2°W 11.2 FEET. WE SCRIBE SE 1/16 S30 BT AND TAG.
 -- 27" DOUGLAS-FIR BEARS N18°W 20.9 FEET. WE SCRIBE SE 1/16 S30 BT AND TAG.
 -- 5/8" IRON ROD SET BY GEE IN MAP M52-25 BEARS S79 1/4° W 25.3 FEET.
 CORNER LIES ON EAST SLOPE ON BENCH ABOVE OLD CUT LINE 0.3 FEET ABOVE GROUND LEVEL.

SURVEY MAP

SURVEY FOR : LONE ROCK TIMBERLAND CO
 P.O. BOX 1127 ROSEBURG, OREGON 97470
 SE 1/4 OF SW 1/4 AND SE 1/4 SECTION 30, T29S R6W

SURVEYED BY: LONE ROCK TIMBER MANAGEMENT COMPANY
 P.O. BOX 1127 ROSEBURG, OREGON 97470
 TRACT: BROWN DATE: DECEMBER 2015

FILED
 DATE: 2-24-2016 BY: JC
 THIS SURVEY CONSISTS OF:
 MAP: M170-44
 NARRATIVE:
 CORNER RPT:
 DOUGLAS COUNTY SURVEYOR

LEGEND

- SET 5/8" X 40" IRON ROD WITH YELLOW PLASTIC CAP
- SET 5/8" X 40" IRON ROD WITH ALUMINUM CAP MARKED LONE ROCK TIMBER PLS 2291
- FOUND 5/8" IRON ROD
- ▲ FOUND 3/4" IRON ROD
- FOUND BLM BRASS CAP
- FOUND DOUGLAS COUNTY BRASS CAP
- △ CALCULATED POSITION
- ▨ LINES BLAZED, PAINTED AND TAGGED
- PROJECTED LINES
- - - COMPUTED LINES
- < > BLM 1980 RESURVEY NOTES VOL. 46 PAGES 17261 - 17263 FILED IN THE DOUGLAS COUNTY SURVEYOR'S OFFICE
- () GEE'S 1973 SURVEY M 52-25 FILED IN THE DOUGLAS COUNTY SURVEYOR'S OFFICE
- { } BOYER'S 1952 SURVEY CS 41/24 FILED IN THE DOUGLAS COUNTY SURVEYOR'S OFFICE
- (()) USGLO 1906 SURVEY NOTES VOL. 15 PAGES 6494 - 6495 FILED IN THE DOUGLAS COUNTY SURVEYOR'S OFFICE
- EXISTING ROAD. EASEMENT #70-2085 RECORDED IN THE DOUGLAS COUNTY RECORDER'S OFFICE.
- - - EXISTING ROAD REQUIRING NEW EASEMENT
- == EXISTING ROAD

CORNER INFORMATION (CONT.)

13) THE SECTION CORNER FOR SECTIONS 29, 30, 31, AND 32 GCDB 200200.
 FOUND BLM BRASS CAP MARKED T29S R6W S29 S30 S31 S32 1980.
 -- 13" INCENSE CEDAR BEARS S29 1/4°E 16.8 FEET <RECORD S28 3/4°E 16.0 FEET>. HEALED FACE AND TAG.
 -- 22" X 6 FOOT INCENSE CEDAR STUMP BEARS S29°W 9.9 FEET <RECORD S29°W 9.9 FEET>. HEALED FACE AND TAG
 -- STUMP HOLE BEARS S88 1/2°W 7.2 FEET <RECORD S86°W 7.3 FEET>. ROTTEN STUMP BESIDE. PLACE MAG HUB AT CENTER.
 -- 21" X 6 FOOT INCENSE CEDAR STUMP BEARS N73 1/2°W 16.3 FEET <RECORD N73 1/2°W 16.2 FEET>. HEALED FACE AND TAG.
 -- 12" X 5 FOOT DOUGLAS-FIR STUMP BEARS N21° E 19.1 FEET <RECORD N21° E 19.1 FEET>. HEALED FACE AND TAG.
 -- 12" INCENSE CEDAR BEARS N57°W 48.5 FEET <RECORD N57° W 48.9 FEET>. PARTIALLY HEALED FACE AND TAG.
 -- 13" INCENSE CEDAR AT <RECORD N61 1/4° E 44.5 FEET> FOUND IN GOOD CONDITION WITH TAG AND PARTIALLY HEALED FACE.
 -- 24" INCENSE CEDAR AT <RECORD S54°W 91.1 FEET> FOUND IN GOOD CONDITION WITH TAG AND PARTIALLY HEALED FACE.
 -- 24" X 1 FOOT DOUGLAS-FIR STUMP AT <RECORD N72°E 17.8 FEET> FOUND PARTIALLY ROTTEN WITH NO TAG OR VISIBLE SCRIBING.
 -- A DOUGLAS-FIR STUMP OF INDETERMINATE SIZE AT <RECORD S42°E 4.6 FEET>.
 -- A MADRONE STUMP OF INDETERMINATE SIZE FOUND BADLY DETERIORATED AT <RECORD S12°W 23.8 FEET>. NO TAG OR SCRIBING VISIBLE
 -- A MADRONE STUMP OF INDETERMINATE SIZE FOUND BADLY DETERIORATED AT <RECORD N23°W 35.0 FEET>. NO TAG OR SCRIBING VISIBLE
 CORNER LIES ON FLAT APPROXIMATELY 100 FEET WEST OF ROCK ROAD 0.3 FEET ABOVE GROUND LEVEL. METAL T-POST BESIDE.

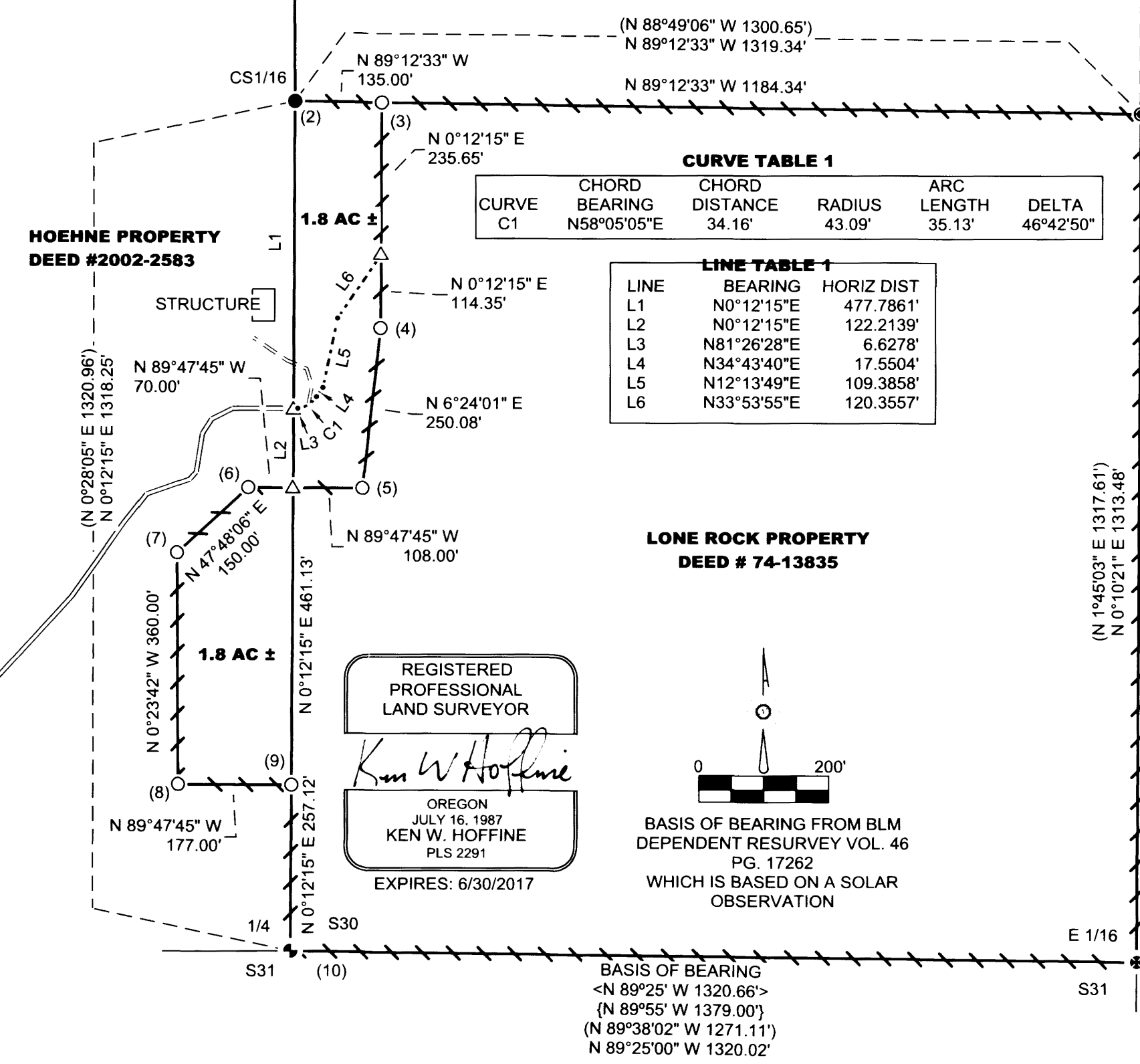
14) THE QUARTER CORNER BETWEEN SECTIONS 29 AND 30 GCDB 200240.
 FOUND 3/4" IRON ROD.
 -- 13" INCENSE CEDAR BEARS S59 1/4°E 40.8 FEET. WE SCRIBE 1/4 S 29 BT AND TAG.
 -- 23" MADRONE BEARS N76°E 18.1 FEET. (RECORD N77°E 17.8 FEET). PARTIALLY HEALED FACE AND TAG.
 -- 15" MADRONE BEARS S62 1/2°W 16.6 FEET. (RECORD S63°W 16.5 FEET). PARTIALLY HEALED FACE AND TAG.
 -- 21" X 5 FOOT DOUGLAS-FIR STUMP BEARS N71 1/2°W 26.6 FEET (RECORD N71°W 26.4 FEET). HEALED FACE AND TAG.
 CORNER LIES IN MIDDLE OF ROCK ROAD RUNNING N20°E NEAR OLD GATE AND EAST WEST RUNNING FENCE 0.1 FEET BELOW GROUND LEVEL.

CURVE TABLE 1

CURVE	BEARING	CHORD DISTANCE	RADIUS	ARC LENGTH	DELTA
C1	N58°05'05"E	34.16'	43.09'	35.13'	46°42'50"

LINE TABLE 1

LINE	BEARING	HORIZ DIST
L1	N0°12'15"E	477.7861'
L2	N0°12'15"E	122.2139'
L3	N81°26'28"E	6.6278'
L4	N34°43'40"E	17.5504'
L5	N12°13'49"E	109.3858'
L6	N33°53'55"E	120.3557'



NARRATIVE

THE PURPOSE OF THIS SURVEY WAS TO ESTABLISH PROPERTY CORNERS AND MARK PROPERTY LINES FOR TIMBER MANAGEMENT PURPOSES AND TO SET CORNERS IN PREPARATION FOR A BOUNDARY LINE ADJUSTMENT BETWEEN LONE ROCK AND HOEHNE PROPERTIES AS SHOWN ON THIS MAP. THE EAST 1/16TH CORNER BETWEEN SECTION 30 AND 31 WAS ESTABLISHED BY A 1952 BOYER SURVEY (CS 41/24 A&B). SECTION 30 WAS SUBDIVIDED BY REGISTERED ENGINEER R.H. GEE IN 1970, 1971 AND 1973 WITH SURVEY MAPS M40-17 AND M41-45 BEING REPLACED BY SURVEY MAP M52-25 USING THE BOYER EAST 1/16TH CORNER. THE BLM IN 1980 RESURVEYED THE SOUTH LINE OF SECTION 30 AND FOUND BOYER'S EAST 1/16TH CORNER TO BE OUT OF POSITION (49.5 FEET OUR MEASUREMENT). THE BLM SET A NEW MONUMENT (11) AT PROPER PROPORTIONATE DISTANCE BETWEEN THE EXISTING SECTION CORNER (13) AND 1/4 CORNER (10). LONE ROCK PERFORMED A COMBINATION OF CONVENTIONAL TOTAL STATION TRAVERSES AND GPS TO TIE IN THE EXISTING MONUMENTS (1), (2), (10), (11), (13) AND (14). USING GPS WE TIED THE SOUTHWEST SECTION CORNER AND THE WEST 1/4 CORNER OF SECTION 19 AND WITH OTHER RECORD DATA, WE COMPUTED THE NORTH AND WEST 1/4 CORNER COORDINATES FOR SECTION 30. BASED ON OUR SURVEY MEASUREMENTS AND COMPUTATIONS FOR THE SUBDIVISION OF SECTION 30 WE DETERMINED THAT GEE'S CENTER 1/4 CORNER (1) WAS WITHIN ACCEPTABLE LIMITS. ALSO AS A RESULT WE FOUND GEE'S SOUTHEAST 1/16TH CORNER FOR SECTION 30 WAS OUT OF POSITION BY NEARLY 25 FEET. FROM OUR MEASUREMENTS WE PROPERLY SUBDIVIDED THE SOUTHEAST 1/4 OF SECTION 30 TO SET A NEW SOUTHEAST 1/16TH CORNER (12) USING: THE BLM'S EAST 1/16TH CORNER (11), THE EAST 1/4 CORNER (14), THE SOUTHEAST SECTION CORNER (13), THE SOUTH 1/4 CORNER (10), GEE'S CENTER SOUTH 1/16TH CORNER (2), AND GEE'S CENTER 1/4 CORNER (1) AS CONTROL. WE THEN SET PROPOSED PROPERTY CORNERS (3) THROUGH (9) IN PREPARATION FOR A FUTURE BOUNDARY LINE ADJUSTMENT FROM A PROPOSED AGREEMENT BETWEEN LONE ROCK AND HOEHNE. THIS BOUNDARY LINE ADJUSTMENT WILL REQUIRE AN ADDITIONAL EASEMENT FOR LONE ROCK TO MAINTAIN ACCESS TO ITS EXISTING EASEMENT #70-2085 ACROSS HOEHNE. THE EXISTING ROAD WAS SURVEYED AND LINE TABLE 1 AND CURVE TABLE 1 WERE CREATED IN ORDER TO MAKE THE DESCRIPTION FOR THE NEW EASEMENT. THIS SURVEY WAS COMPLETED USING A NIKON DTM 522 AND DTM 450 TOTAL STATIONS, TRIMBLE GEO XH 6000 CENTIMETER GRADE GPS WITH TRIMBLE ZEPHYR ANTENNAS, TRAVERSE PC 2015 AND TRIMBLE PATHFINDER OFFICE SOFTWARE, WITH DAN SAILY, GARY ANGIOLET, KATIE NICHOLS, WESTON ADDINGTON, AND IGNACIO ROMAN ASSISTING ME.

REGISTERED PROFESSIONAL LAND SURVEYOR
 KEN W. HOFFINE
 OREGON JULY 16, 1987
 PLS 2291
 EXPIRES: 6/30/2017

BASIS OF BEARING FROM BLM DEPENDENT RESURVEY VOL. 46 PG. 17262 WHICH IS BASED ON A SOLAR OBSERVATION

BASIS OF BEARING
 <N 89°25' W 1320.66'>
 {N 89°55' W 1379.00'}
 (N 89°38'02" W 1271.11")
 N 89°25'00" W 1320.02'

<N 89°25' W 1320.66'>
 {N 89°55' W 1379.00'}
 N 89°23'35" W 1320.31'

MAP FILE M170-44

MAP FILE M170-44