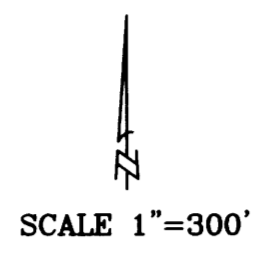


MAP FILE M170-28

FILED
Date: 1-5-2016 By: JC
This survey consists of:
Map: H170-28
Narrative:
Corner Rpt:
DOUGLAS COUNTY SURVEYOR

BOUNDARY SURVEY

IN THE
SOUTHEAST 1/4 OF SECTION 30 AND NORTHWEST 1/4 OF SECTION 32, T23S, R2W, W.M.
DOUGLAS COUNTY, OREGON
NOVEMBER 20, 2015



-NARRATIVE-

THIS SURVEY WAS MADE IN SEPTEMBER AND NOVEMBER, 2015 BY DANIEL W. BAKER OF BAKER AND ASSOCIATES SURVEYORS, INC FOR WEYERHAEUSER COMPANY. THE PURPOSE OF THIS SURVEY WAS TO LOCATE AND MARK IN THE FIELD, THE SOUTH 1/2 OF THE EAST LINE OF SECTION 30, TOWNSHIP 23 SOUTH, RANGE 2 WEST AND THE WEST 1/2 OF THE NORTH LINE OF SECTION 32, TOWNSHIP 23 SOUTH, RANGE 2 WEST, WILLAMETTE MERIDIAN. THE BASIS OF BEARING FOR THIS SURVEY WAS THE NORTH HALF OF THE EAST LINE OF SECTION 30 PER LANE COUNTY SURVEY FILE NUMBER 42482, AS SHOWN. RANDOM TRAVERSES WERE RUN BETWEEN THE SECTION CORNER COMMON TO SECTIONS 29, 30, 31 AND 32 AND THE 1/4 CORNER COMMON TO SECTIONS 29 AND 32 AND THE 1/4 CORNER COMMON TO SECTION 29 AND 30 AND ALSO TO THE SECTION CORNER COMMON TO SECTIONS 19, 20, 29 AND 30, WITH A MINIMUM ERROR OF CLOSURE OF 1' IN 30,000', BEFORE ANGULAR ADJUSTMENT. ALL FOUR CORNER MONUMENTS THAT WERE HELD FOR CONTROL IN THIS SURVEY WERE SET TO PERPETUATE THE ORIGINAL GOVERNMENT CORNER POSITIONS AND WERE HELD IN THIS SURVEY OFFSETS WERE CALCULATED FROM THE RANDOM TRAVERSE LINES AND OFFSET TO MARK THE TRUE PROPERTY LINES. THE TRUE PROPERTY LINES WERE MARKED BY BLAZING TREES ON EITHER SIDE OF THIS TRUE LINE (BLAZES PAINTED ORANGE) AND BY SETTING 5 1/2 FOOT METAL POSTS ALONG THE TRUE LINE AT RANDOM INTERVALS, SHOWN. THERE WERE NO NEW CORNERS SET IN THIS SURVEY AND CORNER ACCESSORIES WERE ADDED, AS NEEDED. BEARINGS TO THE BEARING TREES WERE MAGNETIC WITH A VARIATION OF 17' AND DISTANCES WERE TO A 6" SPIKE IN THE SIDE/CENTER OF TREE, UNLESS NOTED OTHERWISE.

BASIS OF BEARING - BETWEEN FOUND MONUMENTS PER IN LANE COUNTY SURVEY FILE NO. 42482, AS SHOWN

LEGEND

- CORNERS FOUND - 2 1/2" DOUGLAS COUNTY BRASS CAP "1969" OR AS NOTED
- CORNERS FOUND - 3/4" MONEL PIPE PER CSF 42482 (LANE COUNTY)
- 5 1/2 FOOT METAL PROPERTY LINE POSTS SET - DISTANCES CARDINAL DIRECTION TO NEAREST CORNER (I.E. = W 123')
- BLAZED AND PAINTED PROPERTY LINE
- [] - RECORD DATA - 1893 GLO SURVEY
- () - RECORD DATA - LANE COUNTY SURVEY FILE NO. 42482
- CSF - LANE COUNTY SURVEY FILE NUMBER

19 20
30 29

-BASIS OF BEARING-
[N07°45'E 40.00 CHAINS]
[N07°28'-LANE COUNTY SURVEY FILE NUMBER 42482]
N07°45'E 2537.38'

LANE COUNTY
DOUGLAS COUNTY

NORTH 156'
NORTH 326'
NORTH 582'
NORTH 713'
NORTH 897'
NORTH 1016'
NORTH 1122'
NORTH 1266'
SOUTH 1123'
SOUTH 843'
SOUTH 700'
SOUTH 408'
SOUTH 184'

[N07°45'E 40.00 CHAINS]
N07°06'W 2621.24'

① SECTION CORNER 19, 20, 29 AND 30
FOUND: 3/4" MONEL PIPE PER LANE COUNTY RE-ESTAB NUMBER 3613
15" FIR, N69°E, 26.4' TO CENTER-2012 NORTHSTAR BT (CSF 42482-LANE COUNTY)
12" FIR, S10°E, 12.2' TO CENTER-2012 NORTHSTAR BT (CSF 42482-LANE COUNTY)
60" ROTTEN FIR STUMP, S76°W, 24.2' TO "W" NAIL IN FACE- WEYERHAEUSER BT
11" FIR STUMP, S53°W, 10.6' TO CENTER-2012 NORTHSTAR BT (CSF 42482-LANE COUNTY)
REFERENCE MONUMENT-1/2" REBAR WITH YELLOW PLASTIC CAP BEARS N 29°31'38" W, 84.85 FEET

② 1/4 CORNER 29 AND 30
FOUND: 2 1/2" DOUGLAS COUNTY BRASS CAP "1970"
17" FIR, N20°E, 16.4' TO CENTER-2012 NORTHSTAR BT (CSF 42482-LANE COUNTY)
20" HEMLOCK SNAG, S56°E, 21.1' TO CENTER-ORIGINAL BT
28" FIR STUMP, S84°W, 37.2' TO CENTER-1970 DOUGLAS COUNTY BT
21" FIR, S51°W, 17.2' TO CENTER-2012 NORTHSTAR BT (CSF 42482-LANE COUNTY)
MARKED: 18" FIR, S9°E, 8.2' TO CENTER-SCRIBED "1/4S29 BT"
10" FIR, N20°W, 4.5' TO CENTER-SCRIBED "1/4S30 BT"

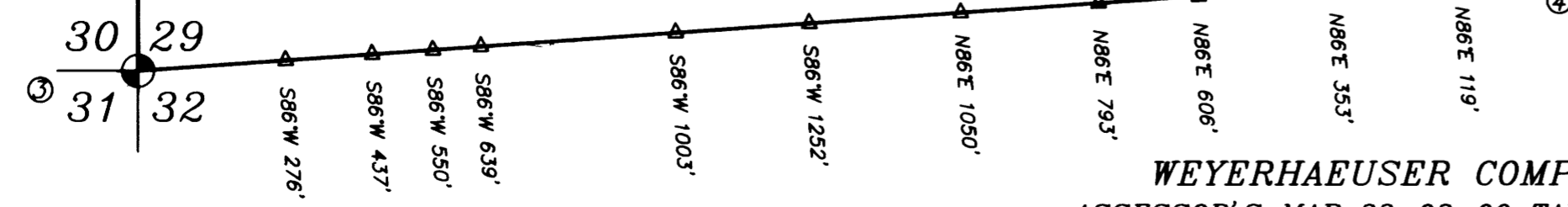
③ SECTION CORNER 29, 30, 31 AND 32
FOUND: 2 1/2" DOUGLAS COUNTY BRASS CAP "1969"
40" FIR STUMP, N74°E, 64.2'(RECORD 56.5)-WEYERHAEUSER TREE
60" FIR STUMP, S59°E, 86.5' TO "W" NAIL (RECORD=87.7)-WEYERHAEUSER BT
36" CEDAR STUMP, S6°W, 88.5' TO "W" NAIL (REC. 87.5)-WEYERHAEUSER BT
36" HEMLOCK STUMP, N59°W, 44.9'-ORIGINAL BT
MARKED: 8" FIR, N9°E, 12.7' TO CENTER-SCRIBED "T23SR2WS29 BT"
12" FIR, S74°E, 7.1' TO CENTER-SCRIBED "T23SR2WS32 BT"
12" FIR, S14°W, 29.6' TO CENTER-SCRIBED "T23SR2WS31 BT"
12" FIR, N46°W, 13.5' TO CENTER-SCRIBED "T23SR2WS30 BT"
5 1/2" METAL POST SET ALONGSIDE CORNER

④ 1/4 CORNER 29 & 32
FOUND: 2 1/2" DOUGLAS COUNTY BRASS CAP "1969"
30" HEMLOCK, N27°E, 35.4' TO CENTER-1969 DOUGLAS COUNTY BT
15" CEDAR SNAG, S33°E, 24.3' TO CENTER-1969 DOUGLAS COUNTY BT
48" FIR STUMP, S46°W, 21.0' TO CENTER-1969 ORIGINAL BT
26" CEDAR STUMP, N30°W, 23.6' TO CENTER-ORIGINAL BT
MARKED: 10" FIR, S28°E, 12.8' TO CENTER-SCRIBED "1/4S32 BT"
12" HEMLOCK, S80°W, 16.1' TO CENTER-SCRIBED "1/4S32 BT"
10" HEMLOCK, N3°W, 12.0' TO CENTER-SCRIBED "1/4S29 BT"
5 1/2" METAL POST SET ALONGSIDE CORNER

BUREAU OF LAND MANAGEMENT
ASSESSOR'S MAP 23-02-00 TAX LOT 500

ASSESSOR'S MAP 23-02-00 TAX LOT 600

[S89°47'W 40.30 CHAINS]
S85°59'11"W 2584.33'



WEYERHAEUSER COMPANY
ASSESSOR'S MAP 23-02-00 TAX LOT 600

REGISTERED PROFESSIONAL LAND SURVEYOR
DANIEL W. BAKER
JULY 15, 1982
1978

EXPIRES 12/31/15

I CERTIFY THAT THIS MAP WAS PREPARED USING A HP51645A INK CARTRIDGE ON JPC-4M2 DOUBLE MATTE FILM

BOUNDARY SURVEY IN THE SOUTHEAST 1/4 OF SECTION 30, AND NORTHWEST 1/4 OF SECTION 32, T23S, R2W, W.M. DOUGLAS COUNTY, OREGON

CLIENT: **WEYERHAEUSER COMPANY**

DRAWN BY: DWB	BAKER AND ASSOCIATES, SURVEYORS
DATE: 11/20/15	1347 MARKET STREET
FILE: WC230230	SPRINGFIELD, OREGON 97477 (541) 343-7243

MAP FILE M170-28

ASSESSOR'S MAP 23-02-00 TAX LOT 600