

SURVEY FOR: JUNIPER PROPERTIES LLC

P.O. BOX 1127 ROSEBURG, OREGON 97470
 SOUTH 1/2 OF SECTION 28, TOWNSHIP 22 SOUTH,
 RANGE 5 WEST, WILLAMETTE MERIDIAN
 SURVEYED BY:
 LONE ROCK TIMBER MANAGEMENT COMPANY
 P.O. BOX 1127 ROSEBURG, OREGON 97470

TRACT: HOLLAMON DATE: SEPTEMBER 2014
 PAGE 1 OF 2

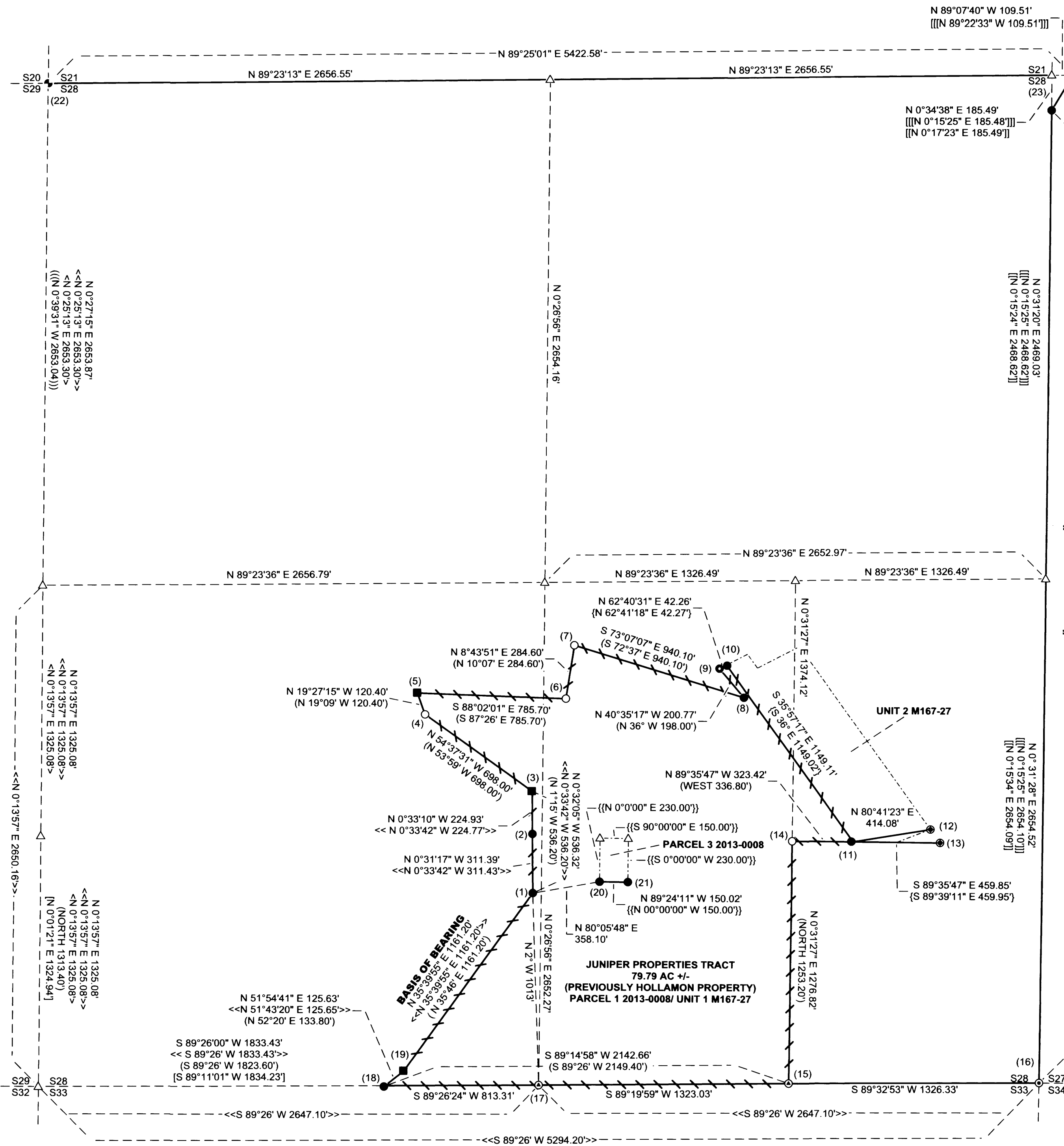
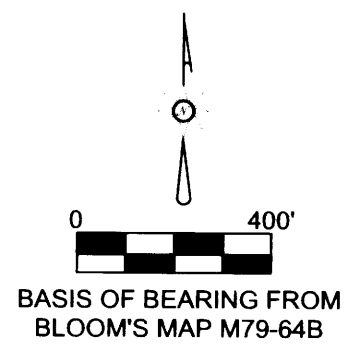
FILED
 DATE: 9-25-2014 BY: JC
 THIS SURVEY CONSISTS OF:
 MAP: M168-44 A-B
 NARRATIVE: CS 65/88-8
 CORNER RPT:
 DOUGLAS COUNTY
 SURVEYOR

LEGEND	
△	COMPUTED POINT
●	FOUND 5/8" IRON ROD
■	FOUND 3/4" IRON BOLT
⊙	FOUND 1982 BLM BRASS CAP AS PER BLM LINE NOTES PAGE 17684 FILED IN THE DOUGLAS COUNTY SURVEYOR'S OFFICE
⊙	FOUND 1980 BLOOM BRASS CAP AS PER MAP M 79-64 A FILED IN THE DOUGLAS COUNTY SURVEYOR'S OFFICE
⊙	FOUND 3/4" IRON PIPE AS PER CS 40/107 FILED IN THE DOUGLAS COUNTY SURVEYOR'S OFFICE
⊙	FOUND 3/4" GALVANIZED IRON PIPE
⊙	FOUND 1958 DOUGLAS COUNTY SURVEYOR OFFICE BRASS CAP AS PER RECORD
○	SET 5/8" X 40" IRON ROD WITH YELLOW PLASTIC CAP MARKED LONE ROCK TIMBER
()	GARDNER'S 1953 MAP RM 3-41 FILED IN THE DOUGLAS COUNTY SURVEYOR'S OFFICE
<< >>	BLOOM'S 1980 MAP M 79-64 A&B FILED IN THE DOUGLAS COUNTY SURVEYOR'S OFFICE
< >	BLOOM'S 1981 MAP M 79-79 FILED IN THE DOUGLAS COUNTY SURVEYOR'S OFFICE
[]	DEGROOT'S 2007 MAP M 153-57 FILED IN THE DOUGLAS COUNTY SURVEYOR'S OFFICE
[[]]	HOFFINE'S 2008 MAP M 155-54 FILED IN THE DOUGLAS COUNTY SURVEYOR'S OFFICE
[[[]]]	HOFFINE'S 2001 MAP M137-17 FILED IN THE DOUGLAS COUNTY SURVEYOR'S OFFICE
[[[[]]]]	HOFFINE'S PARTITION PLAT 2012-0002 FILED IN THE DOUGLAS COUNTY SURVEYOR'S OFFICE
{ }	SWEEDEN'S 2013 MAP M 167-27 FILED IN THE DOUGLAS COUNTY SURVEYOR'S OFFICE
{ { }	SWEEDEN'S PARTITION PLAT 2013-0008 FILED IN THE DOUGLAS COUNTY SURVEYOR'S OFFICE
	PROPERTY LINE BLAZED, PAINTED AND TAGGED
—	MEASURED LINES
- - -	PROJECTED LINES
- - - - -	PROJECTED PARCEL LINES

REGISTERED
 PROFESSIONAL
 LAND SURVEYOR

Ken W. Hoffine

OREGON
 JULY 16, 1987
 KEN W. HOFFINE
 PLS 2291
 EXPIRES: 6/30/2015



MAP FILE M168-44A

MAP FILE M168-44A