

PROPERTY SURVEY LOCATED IN THE NW1/4 OF SECTION 29 AND THE NE1/4 OF SECTION 30,
TOWNSHIP 20 SOUTH, RANGE 10 WEST, W.M., DOUGLAS COUNTY, OREGON.

SURVEY FOR: MENASHA FOREST PRODUCTS CORPORATION
THE CAMPBELL GROUP, LLC ITS AUTHORIZED AGENT
PO BOX 588, NORTH BEND, OR 97459

SURVEY BY: ESTABROOK LAND SURVEYING INC.
PO BOX 574, LAKESIDE, OR 97449

FILED
Date: 6/27/2014 By: JLE
This survey consists of:
Map: N168-20
Narrative:
Corner Rpt:

DOUGLAS COUNTY
SURVEYOR

NOTE: WGS84 LATITUDE AND LONGITUDE ARE PER GARMEN ETREX HAND HELD GPS. THESE POSITIONS ARE NOT SURVEY GRADE AND SHOULD NOT BE USED TO ESTABLISH BOUNDARIES, BUT ARE PROVIDED TO ASSIST IN RESOURCE MANAGEMENT.

NE1/16 COR. SEC. 30
MONUMENT SET:
A 5/8" X 30" IRON ROD WITH PLASTIC CAP
MARKED "ESTABROOK LS2703".
BT'S MARKED:
A 7" MAPLE, ONE OF A MULTIPLE TRUNK WITH FACE
SCRIBED "NW1/16 S30 BT", X-CHOP AND TAG BEARS
N75°E 4.05' TO A SPIKE AT SIDE CENTER.
A 5" FIR FACE SCRIBED "BT" WITH X-CHOP AND TAG
BEARS N13°W 14.4' TO SPIKE AT SIDE CENTER.
LAT. AND LONG. PER GARMEN ETREX HAND HELD GPS
N: 43°48'26.4" W: 123°55'53.6"

SECTION CORNER SEC.19, SEC.20, SEC.29 & SEC.30
FND. 1 1/4" IRON PIPE WITH 2 1/2" BRASS CAP
MARKED "T20S R10W S19 S20 S29 S30 PLS497 1981".
FND. BT'S:
A 27" HEMLOCK STUMP WITH 1/2" IRON ROD IN CENTER
AND TAGS BEARS N61°E 15.1'.
A 24" FIR STUMP WITH 1/2" IRON ROD IN CENTER
AND TAG BEARS S82°E 25.1' RECORD 24.1'.
A 42" FIR STUMP WITH 1/2" IRON ROD IN CENTER
BEARS S61°W 42.5'.
A 37" FIR STUMP WITH 1/2" IRON ROD IN CENTER
BEARS N15°W 20.6'.
NEW BT'S MARKED:
A 19" HEMLOCK FACE SCRIBED "SW S20 BT" WITH X-CHOP
AND TAG BEARS N55°E 24.4' TO A SPIKE AT SIDE CENTER.
A 14" HEMLOCK FACE SCRIBED "NW S29 BT" WITH X-CHOP
AND TAG BEARS S37°E 6.9' TO A SPIKE AT SIDE CENTER.
LAT. AND LONG. PER GARMEN ETREX HAND HELD GPS
N: 43°48'39.3" W: 123°55'36.3"

NARRATIVE:

THE PURPOSE OF THIS SURVEY WAS TO MARK BOUNDARY LINES FOR LOGGING OPERATIONS. THE PROCEDURE WAS TO PERFORM A RETRACEMENT SURVEY OF RECORD SURVEYS M1-56, M99-51 AND M102-12. I SURVEYED BETWEEN FOUND MONUMENTS AS SHOWN HEREON. THEN CALCULATED POSITIONS FOR THE N1/4 CORNER AND THE C1/4 CORNER OF SECTION 30 PER M102-12 AND M99-51. I THEN CALCULATED THE POSITION FOR THE NE1/16 CORNER OF SECTION 30 AND MONUMENTED IT. BOUNDARY LINES MARKED, WERE MARKED WITH ORANGE FLAGGING AND ORANGE BLAZES ON TREES. EQUIPMENT USED WAS A TOPCON 312 TOTAL STATION WITH TDS RANGER DATA COLLECTOR. ASSISTING PERSONNEL WAS GLENN LINDH AND JOSH MAXWELL.

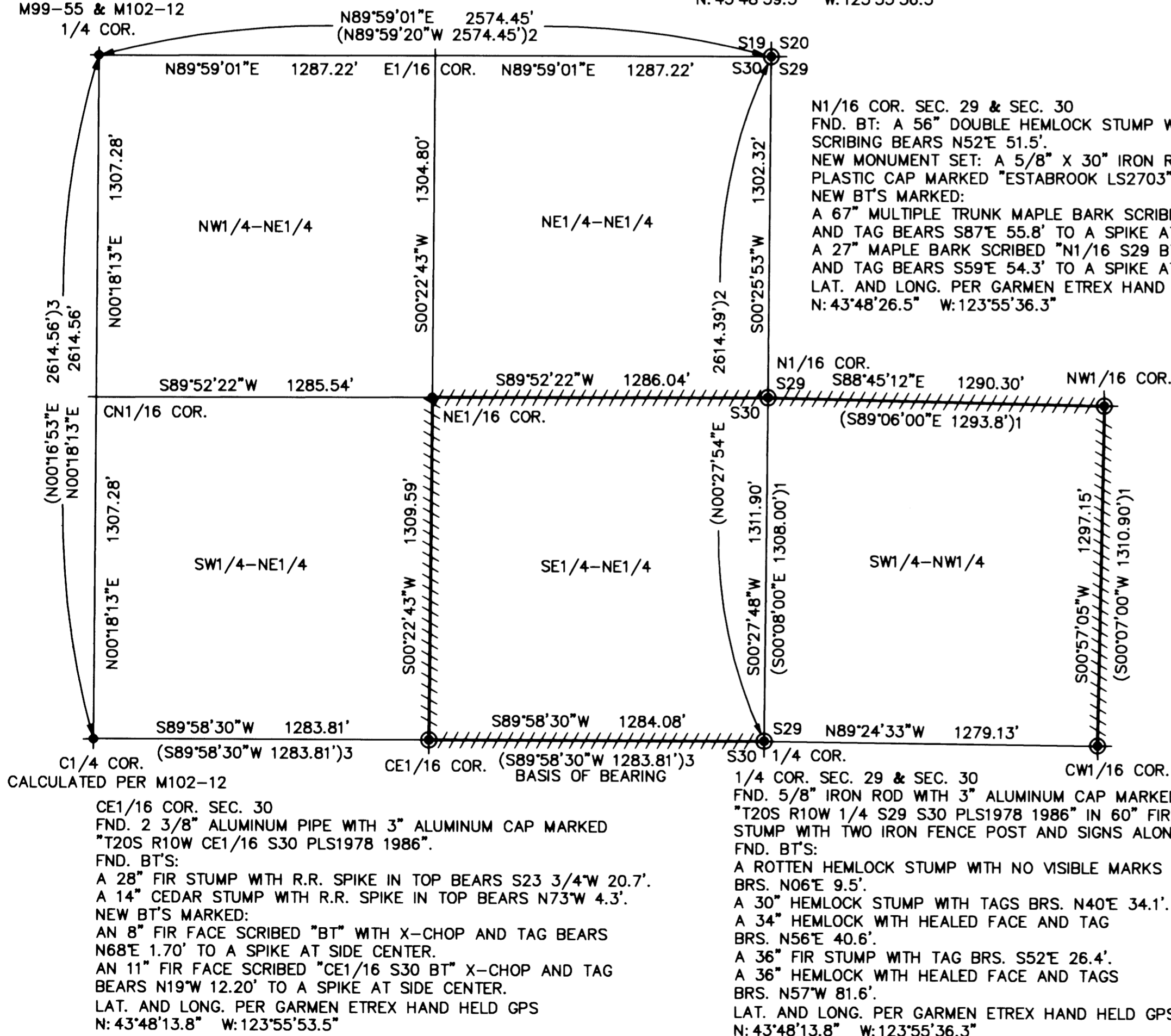
BASIS OF BEARING:

BASIS OF BEARING IS SOLAR PER M102-12

RECORD REFERENCE INFORMATION:

M102-12, BY DANIEL W. BAKER, DATED 6/10/86.
M1-56, BY GIBSON, DATED 6/17/57.
M99-51, BY RICHARD J. HINTZ, DATED SEPT. 1986.

CALCULATED PER
M99-55 & M102-12
1/4 COR.



NW1/16 COR. SEC. 29
FND. 1 1/4" IRON PIPE 3' UNDER GROUND,
UNKNOWN RECORD.
FND. BT'S:
A 29" FIR WITH HEALED FACE AND VISIBLE SCRIBING
IN OPENED FACE AND NEW TAG BEARS N87°E 8.50'.
A 27" FIR WITH HEALED FACE AND NEW TAG BEARS
N10°W 21.4'.
NEW MONUMENT SET: A 5/8" X 30" IRON ROD WITH PLASTIC
CAP MARKED "ESTABROOK LS2703". SET IN CENTER OF IRON PIPE.
LAT. AND LONG. PER GARMEN ETREX HAND HELD GPS
N: 43°48'26.3" W: 123°55'18.4"

CW1/16 COR. SEC. 29
FND. HAND CUT SQUARE POST BROKEN OFF AT
GROUND LEVEL, PER M1-56.
NEW BT'S MARKED:
A 14" FIR FACE SCRIBED "CW1/16 S29 BT" WITH X-CHOP
AND TAG BEARS N72°E 11.85' TO A SPIKE AT SIDE CENTER.
A 20" HEMLOCK FACE SCRIBED "CW1/16 S29 BT" WITH X-CHOP
AND TAG BEARS S56°W 9.70' TO A SPIKE AT SIDE CENTER.
LAT. AND LONG. PER GARMEN ETREX HAND HELD GPS
N: 43°48'13.7" W: 123°55'18.9"

1/4 COR. SEC. 29 & SEC. 30
FND. 5/8" IRON ROD WITH 3" ALUMINUM CAP MARKED
"T20S R10W 1/4 S29 S30 PLS1978 1986" IN 60" FIR
STUMP WITH TWO IRON FENCE POST AND SIGNS ALONGSIDE.
FND. BT'S:
A ROTTEN HEMLOCK STUMP WITH NO VISIBLE MARKS
BRS. N06°E 9.5'.
A 30" HEMLOCK STUMP WITH TAGS BRS. N40°E 34.1'.
A 34" HEMLOCK WITH HEALED FACE AND TAG
BRS. N56°E 40.6'.
A 36" FIR STUMP WITH TAG BRS. S52°E 26.4'.
A 36" HEMLOCK WITH HEALED FACE AND TAGS
BRS. N57°W 81.6'.
LAT. AND LONG. PER GARMEN ETREX HAND HELD GPS
N: 43°48'13.8" W: 123°55'36.3"



LEGEND

- ⊙ FND. MONUMENT AS NOTED
- SET MONUMENT AS NOTED
- CALCULATED CORNER AS NOTED
- ///// BOUNDARY LINE MARKED WITH ORANGE FLAGGING AND ORANGE BLAZES.
- () 1 RECORD PER M1-56
- () 2 RECORD PER M99-51
- () 3 RECORD PER M102-12

REGISTERED
PROFESSIONAL
LAND SURVEYOR

Jerry Lee Estabrook

OREGON
JUNE 30, 1905
JERRY LEE ESTABROOK
2703

EXPIRES 12/31/15

DRAWN BY: JLE	DATE: 6/1/14
CHECKED BY: TJE	DRAWING NO.: RAILRD2
JOB NO.: 2014-39	SHEET 1 of 1

MAP FILE N168-20

MAP FILE N168-20