

SURVEY FOR: LONE ROCK TIMBERLAND CO. & ROSEBURG RESOURCES CO.
P.O. BOX 1127 ROSEBURG, OREGON 97470
SECTION 18 OF TOWNSHIP 24 SOUTH RANGE
6 WEST, WILLAMETTE MERIDIAN
SURVEYED BY: LONE ROCK TIMBER MANAGEMENT COMPANY
P.O. BOX 1127 ROSEBURG, OREGON 97470
TRACT: ALDRIDGE DATE: MAY 2014

FILED
 Date: 6/3/2014 By: VWS
 This survey consists of:
 Map: N 168-11
 Narrative:
 Corner Rpt:

DOUGLAS COUNTY
 SURVEYOR

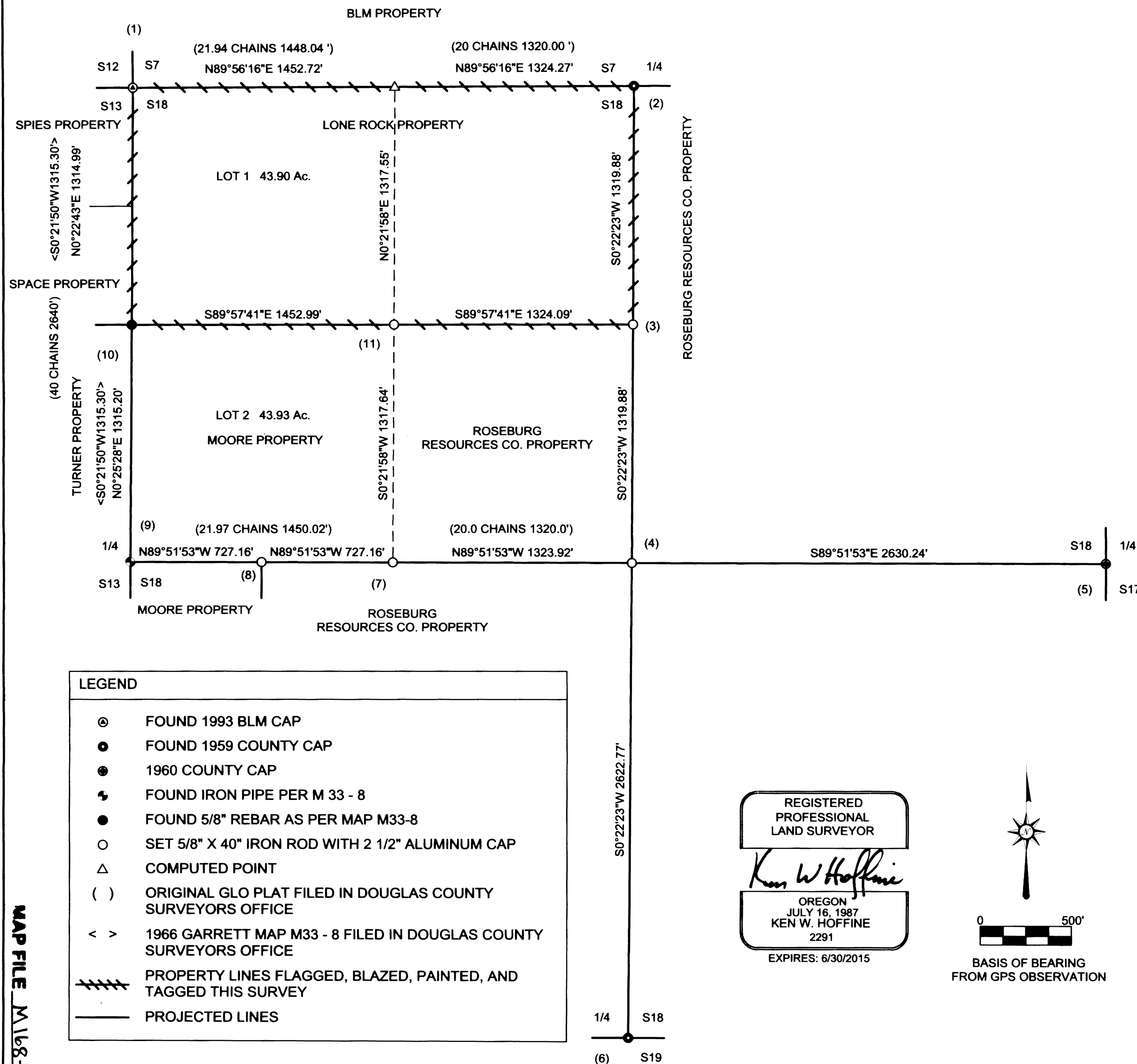
MAP FILE N 168-11

NARRATIVE:

THE PURPOSE OF THIS SURVEY IS TO ESTABLISH PROPERTY CORNERS AND PROPERTY LINES FOR TIMBER MANAGEMENT PURPOSES. WE INITIATED THIS SURVEY AT THE EAST 1/4 CORNER OF SECTION 18, WHICH IS A COUNTY BCIP SET FROM ORIGINAL EVIDENCE RUNNING RANDOM TRAVERSES TO EACH OF THE CONTROL MONUMENTS IN THIS SECTION. WE ALSO ESTABLISHED GPS CONTROL POINTS AS CLOSE AS POSSIBLE TO THE SOUTH 1/4, WEST 1/4, NW SECTION CORNER AND NEAR THE CENTER 1/4, WHICH WE SET IN THIS SURVEY. WE ALSO RAN A CLOSED LOOP RANDOM TRAVERSE AROUND THE NORTH 1/2 OF THE NORTHWEST CORNER TO SET CORNERS ON THIS SUBDIVISION AND MARK THE PROPERTY LINES. THE SOUTH 1/4, THE NW SECTION CORNER AND THE NORTH 1/4 CORNER ARE MONUMENTS AS NOTED UNDER CORNER INFORMATION THAT WERE SET FROM ORIGINAL AND PERPETUATED ORIGINAL EVIDENCE. THE WEST 1/4 IS AN IRON PIPE SET BY PROPORTION BY GARRETT (1966 M33-8). OUR GPS CONTROL POINTS ARE BASED UPON THE LOW DISTORTION OREGON COORDINATE REFERENCE SYSTEM - COTTAGE GROVE TO CANYONVILLE TRANSVERSE MERCATOR PROJECTION - NAD 1983. FROM OUR SURVEY MEASUREMENTS WE SUBDIVIDED THE SECTION AS SHOWN ACCORDING TO THE BLM MANUAL OF INSTRUCTIONS 2009, BALANCING OUR TRAVERSES TO OUR GPS CONTROL. THIS SURVEY WAS DONE WITH A NIKON DTM 522 TOTAL STATION, TRIMBLE 4400 AND 4000 GPS RECEIVERS WITH GARY ANGIOLET, DAN SAILY AND JOSH FOWLER ASSISTING ME.

CORNER INFORMATION:

- 1) THE NORTHWEST SECTION CORNER FOR SECTION 18 T. 24 S. R. 6 W.
 FOUND 1993 BLM CAP 0.3 FEET ABOVE GROUND
 - 26" WHITE FIR BEARS S74°E 59.0 FEET (RECORD S74°E 59.4 FEET) HEALED FACE AND TAG
 - 31" WHITE FIR BEARS N84 1/2°E 18.2 FEET (RECORD N85°E 18.5 FEET) HEALED FACE AND TAG
 - 17" DOUGLAS FIR BEARS S24 1/4°W 9.3 FEET (RECORD S24°W 9.2 FEET) HEALED FACE AND TAG
 - 30" MADRONE BEARS N72 1/4°W 19.8 FEET (RECORD N73°W 19.8 FEET) HEALED FACE AND TAG
 CORNER LIES ON RIDGE TOP AND AT NORTHEAST CORNER OF RECENT CLEARCUT.
- 2) THE QUARTER CORNER BETWEEN SECTIONS 7 AND 18
 FOUND 1959 COUNTY CAP 18" ABOVE GROUND
 - 30" CEDAR BEARS N14 1/2°E 22.8 FEET (RECORD N14°E 22.9 FEET) WELL HEALED FACE AND TAG
 - 14" DOUGLAS FIR BEARS S44 3/4 E 6.8 FEET (RECORD S47°E 7.1 FEET) WELL HEALED FACE AND TAG
 CORNER LIES ON STEEP WEST FACING SLOPE APPROX. 200 FEET EAST OF DRAW.
- 3) THE CENTER NORTH 1/16TH CORNER FOR SECTION 18
 SET 5/8" X 40" IRON ROD WITH 2 1/2" ALUMINUM CAP MARKED LONE ROCK TIMBER T24S R6W S18 CN 1/16 2014 PLS 2291
 - 14" DOUGLAS FIR BEARS S79 3/4° 18.3 FEET WE SCRIBE CN1/16 S18 BT AND TAG TREE
 - 16" DOUGLAS FIR BEARS S50°W 16.1 FEET WE SCRIBE CN1/16 S18 BT AND TAG TREE
 CORNER LIES ON VERY STEEP NORTH FACING SLOPE AT HEAD OF DRAW. WE PUT METAL FENCE POST APPROX. 0.5 FEET NORTH OF CORNER.
- 4) THE CENTER QUARTER CORNER FOR SECTION 18
 SET A 5/8" X 40" IRON ROD WITH 2 1/2" ALUMINUM CAP MARKED LONE ROCK TIMBER T24S R6W C 1/4 S18 2014 PLS 2291
 - SET PK NAIL IN TOP OF TRIANGLE SHAPED ROCK THAT IS 2.5' X 1.3' X 0.8' WHICH BEARS N89 26°W 4.72 FEET
 - 14" DOUGLAS FIR BEARS N30°W 17.5 FEET WE SCRIBE T24S R6W S18 C 1/4 BT AND TAG TREE
 - 10" DOUGLAS FIR BEARS S83°E 20.0 FEET WE SCRIBE S18 C1/4 BT AND TAG TREE
 - 13" DOUGLAS FIR BEARS N36°E 9.8 FEET WE SCRIBE T24S R6W S18 C1/4 BT AND TAG TREE
 CORNER LIES ON SOUTH FACING SLOPE AT TOE OF LARGE SOLID ROCK AREA IN A NORTH - SOUTH FENCE LINE DROVE A 40" IRON ROD 22" INTO THE GROUND THEN PILED A MOUND OF STONES TO WITHIN 6" OF TOP OF ROD.
- 5) THE QUARTER CORNER BETWEEN SECTIONS 17 AND 18
 FOUND 1960 COUNTY CAP 18" ABOVE GROUND
 - 20" DOUGLAS FIR BEARS N69 1/4°W 45.1 FEET (RECORD N69°W 45.8 FEET) HEALED FACE AND TAG
 - 24" DOUGLAS FIR BEARS S73 3/4°E 6.3 FEET (RECORD S71°E 6.0 FEET) HEALED FACE AND TAG
 - 22" DOUGLAS FIR BEARS N53 1/4°W 19.4 FEET UNRECORDED TREE BUT HAS HEALED FACE AND TAG WHICH READS S56 1/2°E 32 LKS (21.12 FEET)
 CORNER LIES ON STEEP NORTH FACING SLOPE APPROX. 30 FEET NORTH OF SMALL NEAR VERTICAL PITCH.
- 6) THE QUARTER CORNER BETWEEN SECTIONS 18 AND 19
 FOUND 1959 COUNTY CAP 1.0 FEET ABOVE GROUND
 - FOUND 3/4" IRON PIN AT S21°E 83 LKS (54.78 FEET) AS PER RECORD
 - 56" OAK BEARS S19°W NOT RECORD S18°50' E AND 187 LKS (123.42 FEET) DID NOT MEASURE
 - 20" OAK BEARS S38°E 115 LKS (75.90 FEET) AS PER RECORD
 - 20" MAPLE BEARS N 6 1/2°W 97 LKS (64.02 FEET) AS PER RECORD
 CORNER LIES ON NORTH SIDE OF FENCE CORNER POST, FENCE RUNS NORTH AND WEST FROM CORNER
- 7) THE CENTERWEST 1/16 TH CORNER FOR SECTION 18
 SET 5/8" X 40" IRON ROD WITH 2 1/2" ALUMINUM CAP MARKED LONE ROCK TIMBER CW 1/16 S18 2014 PLS 2291
 - 14" DOUGLAS FIR BEARS S73 1/4 E 19.1 FEET WE SCRIBE CW1/16 S18 BT AND TAG TREE
 - FENCE CORNER BEARS S76 3/4°E 54.8 FEET
 - 5/8" X 40" IRON ROD WITH ORANGE PLASTIC CAP MARKED LONE ROCK TIMBER PLS 2291 BEARS N89°51'53"W 65.2 FEET BEARING TREES FOR REFERENCE ROD ARE
 - 12" DOUGLAS FIR BEARS N12°W 8.1 FEET WE SCRIBE BT AND TAG TREE
 - 12" DOUGLAS FIR BEARS S37°W 3.5 FEET WE SCRIBE BT AND TAG TREE
 CORNER LIES IN SMALL GROVE OF 12" TO 14" DOUGLAS FIR WITH GRASS PASTURE TO THE NORTHWEST. A FENCE LINES LIES APPROX. 12 FEET SOUTH OF CORNER. WE PUT METAL FENCE POST APPROX. 1.0 FEET NORTH OF CORNER.
- 8) THE CENTER - WEST - WEST 1/64 TH CORNER FOR SECTION 18
 SET 5/8" X 40" IRON ROD WITH 2 1/2" ALUMINUM CAP MARKED LONE ROCK TIMBER S18 C-W-W 1/64 2014 PLS 2291
 - 18" DOUGLAS FIR BEARS N65°W 61.2 FEET WE SCRIBE CWW 1/64 S18 BT AND TAG TREE
 - 21" DOUGLAS FIR BEARS S89 1/2°W 28.1 FEET WE SCRIBE CWW 1/64 S18 BT AND TAG TREE
 - SET 5/8" X 40" IRON ROD WITH YELLOW PLASTIC CAP MARKED LONE ROCK TIMBER PLS 2291 BEARS N89°51'53"W 32.60 FEET BEARING TREE FOR REFERENCE ROD IS SAME 21" DOUGLAS FIR AS FOR CENTER - WEST - WEST 1/64 AS STATED ABOVE IT BEARS S86 1/4°E 4.5 FEET WE SCRIBE BT AND TAG TREE
 CORNER LIES IN PASTURE APPROX. 5 FEET SOUTH OF OLD DOWN FENCE LINE. PUT METAL FENCE POST APPROX. 1.0 FEET NORTH OF CORNER.
- 9) THE WEST QUARTER CORNER FOR SECTION 18
 FOUND 1/2" IRON PIPE (RECORD 5/8" IRON ROD) AT FENCE CORNER
 - 26" OAK BEARS N2 1/4°W 59.1 FEET (RECORD N3°15'W 60.0 FEET) VERY WELL HEALED FACE AND TAG
 CORNER LIES ON SIDE OF FENCE CORNER POST. FENCES RUN NORTH AND WEST FROM CORNER.
- 10) THE NORTH 1/16 TH CORNER BETWEEN SECTIONS 13 AND 18
 FOUND 5/8" X 40" IRON ROD NEXT TO FENCE POST WITH A 2.5 FEET TALL 3/4" IRON PIPE WHICH BEARS N80 1/2°W 0.85 FEET
 - 7" DOUGLAS FIR BEARS S79 1/4°E 6.7 FEET WE SCRIBE N1/16 S18 BT AND TAG TREE
 - 18" DOUGLAS FIR BEARS S20 1/2°W 8.8 FEET WE SCRIBE N1/16 S13 BT AND TAG TREE
 CORNER LIES ON WEST SIDE OF WOODEN FENCE POST IN NORTH SOUTH FENCE LINE
- 11) THE NORTHWEST 1/16 TH CORNER FOR SECTION 18
 SET 5/8" X 40" IRON ROD WITH 2 1/2" ALUMINUM CAP MARKED LONE ROCK TIMBER NW 1/16 S18 2014 PLS2291
 - 11" DOUGLAS FIR BEARS S33 1/2°E 14.8 FEET WE SCRIBE NW1/16 S18 BT AND TAG TREE
 - 22" DOUGLAS FIR BEARS S81°W 25.8 FEET WE SCRIBE NW 1/16 S18 BT AND TAG TREE
 - SET 5/8" X 40" IRON ROD WITH ORANGE PLASTIC CAP MARKED LONE ROCK TIMBER PLS 2291 BEARS N89°54'02" W 64.71 FEET BEARING TREES FOR REFERENCE IRON ROD ARE
 - 10" DOUGLAS FIR BEARS S60°W 11.7 FEET WE SCRIBE BT AND TAG TREE
 - 11" DOUGLAS FIR BEARS N79 1/2°W 12.0 FEET WE SCRIBE BT AND TAG TREE
 CORNER LIES AT SOUTH EDGE OF ROAD TO BE CONSTRUCTED IN THE SUMMER OF 2014. AN EAST WEST FENCE LINE IS APPROX. 35 FEET SOUTH OF THE CORNER. WE PUT METAL FENCE POST 1.0 FEET EAST AND WEST OF CORNER FOR VISIBILITY DURING ROAD CONSTRUCTION.



MAP FILE N 168-11