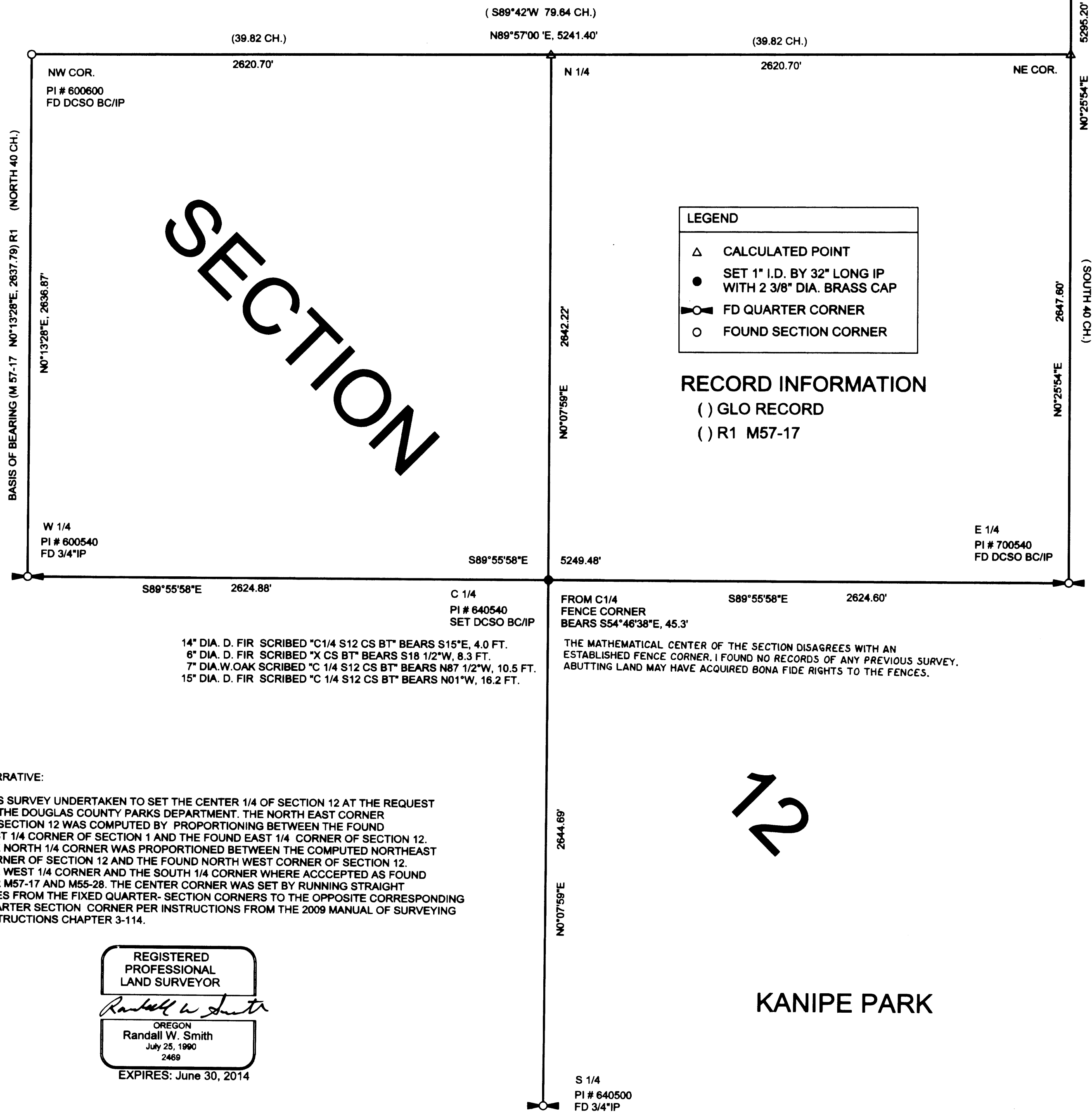
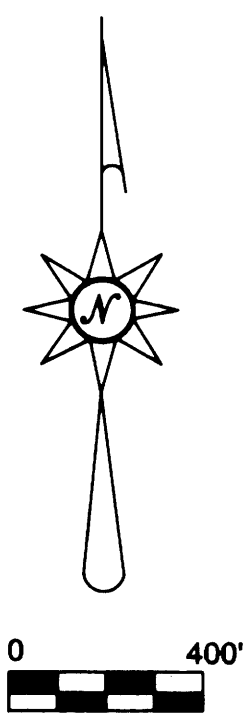


FILED
Date: 5-1-2014 By: JC
This survey consists of:
Map: M167-77
Narrative:
Corner Rpt: 5567/41-19

DOUGLAS COUNTY
SURVEYOR

E 1/4
PI # 700640
FD DCSO BC/IP

SURVEY FOR THE DOUGLAS COUNTY PARKS DEPARTMENT
IN THE SE 1/4 OF SEC. 1 AND SEC. 12 OF T.24 S. R.5 W. W.M.
KANJIPE PARK DOUGLAS COUNTY OREGON
BY DOUGLAS COUNTY SURVEYORS OFFICE AND PUBLIC WORKS
MAY 2014



SECTION

LEGEND	
△	CALCULATED POINT
●	SET 1" I.D. BY 32" LONG IP WITH 2 3/8" DIA. BRASS CAP
⊕	FD QUARTER CORNER
○	FOUND SECTION CORNER

RECORD INFORMATION
() GLO RECORD
() R1 M57-17

14" DIA. D. FIR SCRIBED "C1/4 S12 CS BT" BEARS S15°E, 4.0 FT.
6" DIA. D. FIR SCRIBED "X CS BT" BEARS S18 1/2°W, 8.3 FT.
7" DIA. W.OAK SCRIBED "C 1/4 S12 CS BT" BEARS N87 1/2°W, 10.5 FT.
15" DIA. D. FIR SCRIBED "C 1/4 S12 CS BT" BEARS N01°W, 16.2 FT.

FROM C1/4 FENCE CORNER BEARS S54°46'38"E, 45.3'
THE MATHEMATICAL CENTER OF THE SECTION DISAGREES WITH AN ESTABLISHED FENCE CORNER. I FOUND NO RECORDS OF ANY PREVIOUS SURVEY. ABUTTING LAND MAY HAVE ACQUIRED BONA FIDE RIGHTS TO THE FENCES.

NARRATIVE:
THIS SURVEY UNDERTAKEN TO SET THE CENTER 1/4 OF SECTION 12 AT THE REQUEST OF THE DOUGLAS COUNTY PARKS DEPARTMENT. THE NORTH EAST CORNER OF SECTION 12 WAS COMPUTED BY PROPORTIONING BETWEEN THE FOUND EAST 1/4 CORNER OF SECTION 1 AND THE FOUND EAST 1/4 CORNER OF SECTION 12. THE NORTH 1/4 CORNER WAS PROPORTIONED BETWEEN THE COMPUTED NORTHEAST CORNER OF SECTION 12 AND THE FOUND NORTH WEST CORNER OF SECTION 12. THE WEST 1/4 CORNER AND THE SOUTH 1/4 CORNER WHERE ACCEPTED AS FOUND PER M57-17 AND M55-28. THE CENTER CORNER WAS SET BY RUNNING STRAIGHT LINES FROM THE FIXED QUARTER-SECTION CORNERS TO THE OPPOSITE CORRESPONDING QUARTER SECTION CORNER PER INSTRUCTIONS FROM THE 2009 MANUAL OF SURVEYING INSTRUCTIONS CHAPTER 3-114.

REGISTERED PROFESSIONAL LAND SURVEYOR
Randall W. Smith
OREGON
Randall W. Smith
July 25, 1990
2469
EXPIRES: June 30, 2014

KANJIPE PARK