

RECORD OF SURVEY FOR: PLUM CREEK NE1/4, NW1/4, SW1/4, SECTION 12, T. 19 S., R. 9 W., W. M. DOUGLAS COUNTY, OREGON 25 FEBRUARY 2014

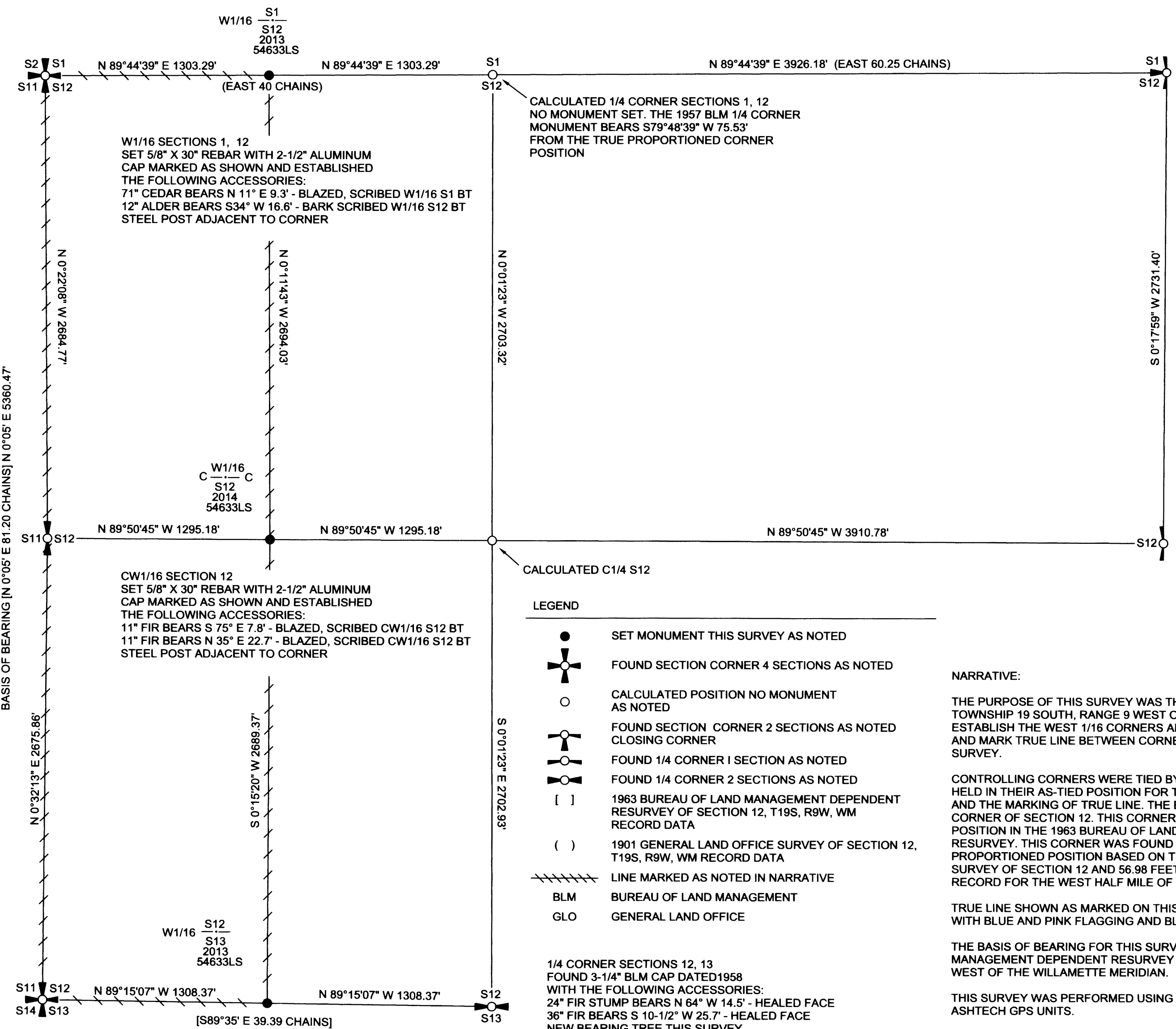
FILED DATE 3/20/2014 BY: HW This survey consists of: Map: M 167-43 Narrative: Corner Rpt:

DOUGLAS COUNTY SURVEYOR

SECTION CORNER SECTIONS 1, 2, 11, 12 FOUND 3-1/4" BLM BRASS CAP DATED 1957 WITH THE FOLLOWING ACCESSORIES: 44" FIR BEARS N 6-1/2° E 21.8' - HEALED FACE 36" FIR BEARS S 72-1/4° E 20.5' - HEALED FACE 48" METAL CAPPED FIR STUMP BEARS S 44° W 41.6' - HEALED FACE 30" FIR STUMP BEARS N 63° W 23.8' - SCRIBING VISIBLE STEEL POST ADJACENT TO CORNER

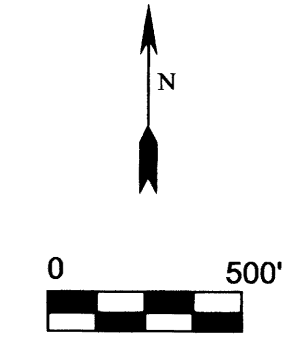
1/4 CORNER SECTIONS 11, 12 FOUND 3-1/4" BLM BRASS CAP DATED 1958 WITH THE FOLLOWING ACCESSORIES: 12" FIR STUMP BEARS S 35° E 15.2' - SCRIBING VISIBLE 31" FIR BEARS N 40° W 18.5' BLM TAG DATED 1975 READS N 39° W 19.0' - HEALED FACE UNRECORDED 1975 BLM BEARING TREE FOUND 24" FIR BEARS S 2° W 56.3' - HEALED FACE STEEL POST ADJACENT TO CORNER

SECTION CORNER SECTIONS 11, 12, 13, 14 FOUND 3-1/4" BLM BRASS CAP DATED 1958 WITH THE FOLLOWING ACCESSORIES: 25" FIR STUMP BEARS N 9° E 32.3' - ROTTED FACE 47" METAL CAPPED FIR STUMP BEARS S 57° E 127.4' - SCRIBING VISIBLE 32" FIR STUMP BEARS S 30° W 7.9' - NO MARKS 17" HEMLOCK BEARS N 18-3/4° E 29.4' - SCRIBING VISIBLE 21" HEMLOCK BEARS N 26° W 31.1' - SCRIBING VISIBLE 12" FIR STUMP BEARS S 43° W 23.2' - HEALED FACE 19" HEMLOCK BEARS S 35° E 20.0' - SCRIBING VISIBLE STEEL POST ADJACENT TO CORNER



SECTION CORNER SECTIONS 1, 12 FOUND GLO BRASS CAP DATED 1957 BEARING TREES IN EVIDENCE

1/4 CORNER SECTION 12 ONLY FOUND GLO BRASS CAP DATED 1957 BEARING TREES IN EVIDENCE



CALCULATED 1/4 CORNER SECTIONS 1, 12 NO MONUMENT SET. THE 1957 BLM 1/4 CORNER MONUMENT BEARS S79°48'39" W 75.53' FROM THE TRUE PROPORTIONED CORNER POSITION

W1/16 SECTIONS 1, 12 SET 5/8" X 30" REBAR WITH 2-1/2" ALUMINUM CAP MARKED AS SHOWN AND ESTABLISHED THE FOLLOWING ACCESSORIES: 71" CEDAR BEARS N 11° E 9.3' - BLAZED, SCRIBED W1/16 S1 BT 12" ALDER BEARS S34° W 16.6' - BARK SCRIBED W1/16 S12 BT STEEL POST ADJACENT TO CORNER

CW1/16 SECTION 12 SET 5/8" X 30" REBAR WITH 2-1/2" ALUMINUM CAP MARKED AS SHOWN AND ESTABLISHED THE FOLLOWING ACCESSORIES: 11" FIR BEARS S 75° E 7.8' - BLAZED, SCRIBED CW1/16 S12 BT 11" FIR BEARS N 35° E 22.7' - BLAZED, SCRIBED CW1/16 S12 BT STEEL POST ADJACENT TO CORNER

- LEGEND: SET MONUMENT THIS SURVEY AS NOTED, FOUND SECTION CORNER 4 SECTIONS AS NOTED, CALCULATED POSITION NO MONUMENT AS NOTED, FOUND SECTION CORNER 2 SECTIONS AS NOTED CLOSING CORNER, FOUND 1/4 CORNER 1 SECTION AS NOTED, FOUND 1/4 CORNER 2 SECTIONS AS NOTED, 1963 BUREAU OF LAND MANAGEMENT DEPENDENT RESURVEY OF SECTION 12, T19S, R9W, WM RECORD DATA, 1901 GENERAL LAND OFFICE SURVEY OF SECTION 12, T19S, R9W, WM RECORD DATA, LINE MARKED AS NOTED IN NARRATIVE, BLM BUREAU OF LAND MANAGEMENT, GLO GENERAL LAND OFFICE

NARRATIVE: THE PURPOSE OF THIS SURVEY WAS THE SUBDIVISION OF SECTION 12, TOWNSHIP 19 SOUTH, RANGE 9 WEST OF THE WILLAMETTE MERIDIAN TO ESTABLISH THE WEST 1/16 CORNERS AND THE CENTER WEST 1/16 CORNER AND MARK TRUE LINE BETWEEN CORNERS SHOWN ON THIS RECORD OF SURVEY.

CONTROLLING CORNERS WERE TIED BY GROUND TRAVERSE OR GPS AND HELD IN THEIR AS-TIED POSITION FOR THE SUBDIVISION OF SECTION 12 AND THE MARKING OF TRUE LINE. THE EXCEPTION WAS THE NORTH 1/4 CORNER OF SECTION 12. THIS CORNER WAS SET AT PROPORTIONED POSITION IN THE 1963 BUREAU OF LAND MANAGEMENT DEPENDENT RESURVEY. THIS CORNER WAS FOUND TO BE 75.53' DIFFERENT FROM MY PROPORTIONED POSITION BASED ON THE 1901 GENERAL LAND OFFICE SURVEY OF SECTION 12 AND 56.98 FEET DIFFERENT FROM THE 1963 BLM RECORD FOR THE WEST HALF MILE OF THE NORTH LINE OF SECTION 12.

TRUE LINE SHOWN AS MARKED ON THIS RECORD OF SURVEY WAS MARKED WITH BLUE AND PINK FLAGGING AND BLUE PAINTED BLAZES.

THE BASIS OF BEARING FOR THIS SURVEY WAS THE 1963 BUREAU OF LAND MANAGEMENT DEPENDENT RESURVEY OF TOWNSHIP 19 SOUTH, RANGE 9 WEST OF THE WILLAMETTE MERIDIAN.

THIS SURVEY WAS PERFORMED USING A NIKON TOTAL STATION AND ASHTECH GPS UNITS.

1/4 CORNER SECTIONS 12, 13 FOUND 3-1/4" BLM CAP DATED 1958 WITH THE FOLLOWING ACCESSORIES: 24" FIR STUMP BEARS N 64° W 14.5' - HEALED FACE 36" FIR BEARS S 10-1/2° W 25.7' - HEALED FACE NEW BEARING TREE THIS SURVEY 8" FIR BEARS N 16° W 26.6' - BLAZED, SCRIBED 1/4 S12 BT

W1/16 SECTIONS 12, 13 SET 5/8" X 30" REBAR WITH 2-1/2" ALUMINUM CAP MARKED AS SHOWN AND ESTABLISHED THE FOLLOWING ACCESSORIES: 11" FIR BEARS N 50° W 17.4' - BLAZED, SCRIBED W1/16 S12 BT 9" FIR BEARS S 54° W 11.0' - BLAZED, SCRIBED W1/16 S13 BT STEEL POST ADJACENT TO CORNER



EXPIRATION DATE: 12-31-2014

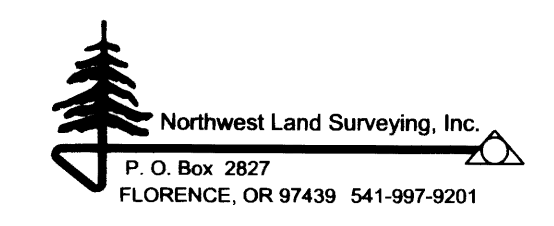


Table with columns: FILE NAME, SCALE, DATE, DRAWN BY, JOB, REVISION, SHEET, UPPER WHIT. CK.