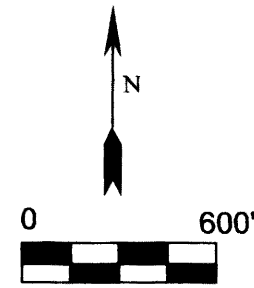


RECORD OF SURVEY  
 FOR: OXBOW TIMBER 1 L. L. C.  
 SE1/4, SW1/4, NW1/4, SECTION 32, T. 20 S., R. 8 W., W.M.  
 SE1/4, SW1/4, SECTION 30, T. 20 S., R. 8 W., W.M.  
 DOUGLAS COUNTY, OREGON  
 28 FEBRUARY 2014



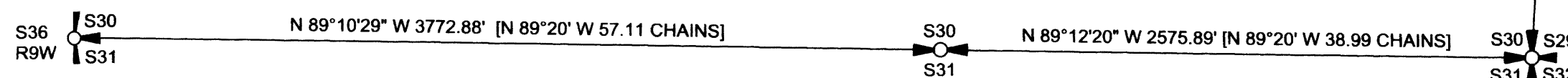
FILED  
 DATE: 3/20/2014 BY: NW  
 THIS SURVEY CONSISTS OF:  
 MAP: M 167-42  
 NARRATIVE:  
 CORNER RPT: \_\_\_\_\_

DOUGLAS COUNTY  
 SURVEYOR

MAP FILE M 167-42

SECTION CORNER SECTIONS 30, 31  
 FOUND 2-1/2" GLO BRASS CAP DATED 1950 AS REFERENCED  
 BY 2011 BLM LEANING 0.8' (SET PIPE TO VERTICAL)  
 WITH THE FOLLOWING ACCESSORIES:  
 17" FIR SNAG BEARS N 11-1/2° E 21.8' - ROTTED FACE  
 30" FIR BEARS S 34-1/2° E 22.4' - LARGE NATURAL SCAR  
 34" FIR BEARS N 88-1/2° E 28.4' - LARGE NATURAL SCAR  
 11" FIR IN NE QUADRANT SHOWS PARTIALLY HEALED FACE  
 UNSCRIBED APPEARS TO BE 2011 UNFINISHED BLM BEARING TREE  
 GLO BRASS CAP MARKING THE E1/4 CORNER S36 BEARS S 1°24'53" W 63.87'  
 STEEL POST ADJACENT TO CORNER

1/4 CORNER SECTIONS 29, 30  
 FOUND 2-1/2" GLO BRASS CAP DATED 1950  
 WITH THE FOLLOWING ACCESSORIES:  
 RECORD 11" HEMLOCK SNAG EAST 13 LKS. - MISSING  
 63" FIR STUMP BEARS S 78° W 16.5' - HEALED FACE  
 11 D. FIR BEARS S 77-1/4° W 12.0' - SCRIBING VISIBLE (2013 BLM)  
 2013 BLM TAG READS S 77-1/4° W 11.3'  
 9" D. FIR BEARS S 63° W 7.5' - SCRIBING VISIBLE (2013 BLM)  
 2013 BLM TAG READS S 63° W 7.8'  
 NEW BEARING TREES THIS SURVEY  
 18" D. FIR BEARS S 6° E 20.3' - BLAZED, SCRIBED 1/4 S29 BT  
 11" D. FIR BEARS N 33° W 23.7' - BLAZED, SCRIBED 1/4 S30 BT  
 STEEL POST ADJACENT TO CORNER  
 NOTE: CORNER MONUMENT IS 0.6' FROM VERTICAL DUE TO TREE ROOT  
 GROWTH. IT APPEARS IN 2013 BLM TIED AND REFERENCED THE  
 CORNER IN THIS POSITION. ALL REFERENCES TO THIS CORNER BY  
 NORTHWEST LAND SURVEYING ARE MADE TO A PROJECTED VERTICAL  
 POSITION.



1/4 CORNER SECTIONS 30, 21  
 FOUND 2-1/2" GLO BRASS CAP DATED 1950  
 WITH THE FOLLOWING ACCESSORIES:  
 60" FIR STUMP BEARS N 53-3/4° W 7.9' - ROTTED FACE  
 50" FIR STUMP BEARS S 53-3/4° E 13.9' - ROTTED FACE  
 NEW BEARING TREES THIS SURVEY  
 19" D. FIR BEARS N 13° W 11.4' - BLAZED, SCRIBED 1/4 S30 BT  
 15" D. FIR BEARS N 22° E 10.5' - BLAZED, SCRIBED X BT  
 20" D. FIR BEARS N 66° E 22.1' - BLAZED, SCRIBED 1/4 S30 BT  
 28" D. FIR BEARS S 13° W 19.3' - BLAZED, SCRIBED 1/4 S31 BT  
 STEEL POST ADJACENT TO CORNER

SECTION CORNER SECTIONS 29, 30, 31, 32  
 FOUND 2-1/2" GLO BRASS CSAP DATED 1950  
 WITH THE FOLLOWING ACCESSORIES:  
 43" FIR STUMP BEARS N 47° E 25.1' - HEALED FACE  
 25" CEDAR STUMP BEARS S 74° E 18.8' - NO SCRIBING  
 60" FIR STUMP BEARS A71° W 21.8' - HEALED FACE  
 40" FIR STUMP BEARS N 38-3/4° W 44.2' - HEALED FACE  
 NEW BEARING TREES THIS SURVEY  
 16" D. FIR BEARS N 85° W 16.8' - BLAZED, SCRIBED T20S R8W S30 BT  
 20" D. FIR BEARS N 42° E 15.9' - BLAZED, SCRIBED T20S R8W S29 BT  
 12" D. FIR BEARS S 80° E 18.7' - BLAZED, SCRIBED T20S R8W S32 BT  
 20" D. FIR BEARS S 16° W 42.4' - BLAZED, SCRIBED T20S R8W S31 BT  
 STEEL POST ADJACENT TO CORNER

NARRATIVE:

THE PURPOSE OF THIS SURVEY WAS TO MARK TRUE LINE BETWEEN THE CORNERS SHOWN ON THIS RECORD OF SURVEY IN TOWNSHIP 20 SOUTH, RANGE 8 WEST OF THE WILLAMETTE MERIDIAN.

EXISTING CORNERS WERE TIED BY GROUND TRAVERSE FOR CONTROL AND HELD IN THEIR AS-TIED POSITION FOR MARKING OF TRUE LINE. TRUE LINE WAS MARKED WITH RED PAINTED BLAZES, RED FLAGGING AND 5-1/2" GALVANIZED STEEL POST SET AT AN AVERAGE INTERVAL OF 200'.

THE BASIS OF BEARING FOR THIS SURVEY WAS THE 1952 BUREAU OF LAND MANAGEMENT DEPENDENT RESURVEY OF TOWNSHIP 20 SOUTH, RANGE 8 WEST OF THE WILLAMETTE MERIDIAN.

THIS SURVEY WAS PERFORMED USING A NIKON TOTAL STATION.

LEGEND

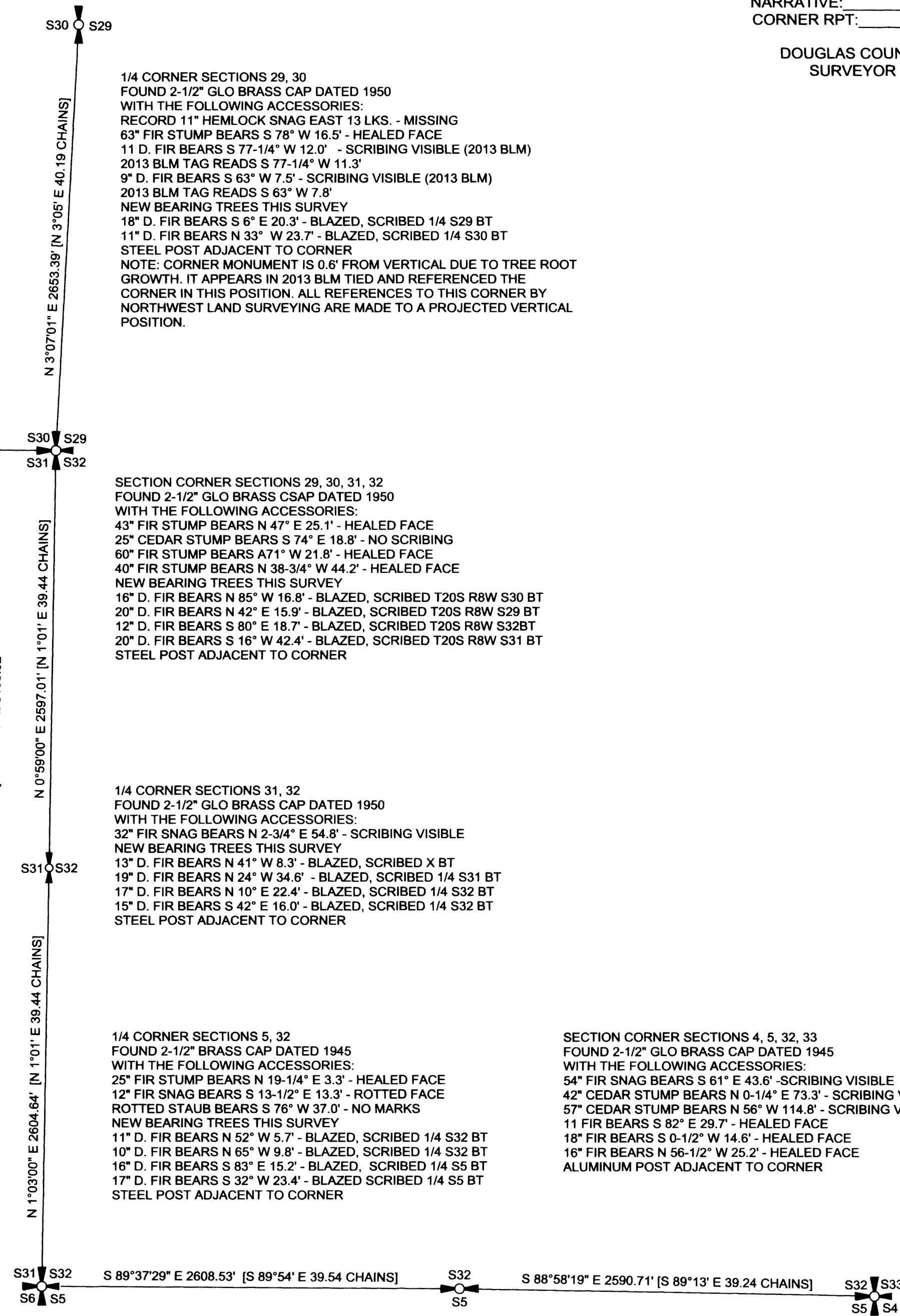
- FOUND SECTION CORNER 2 SECTIONS AS NOTED
- FOUND 1/4 CORNER AS NOTED
- FOUND SECTION CORNER 4 SECTIONS AS NOTED
- [ ] 1952 BLM DEPENDENT RESURVEY OF T20S R8W WM RECORD DATA
- BLM BUREAU OF LAND MANAGEMENT
- GLO GENERAL LAND OFFICE

1/4 CORNER SECTIONS 31, 32  
 FOUND 2-1/2" GLO BRASS CAP DATED 1950  
 WITH THE FOLLOWING ACCESSORIES:  
 32" FIR SNAG BEARS N 2-3/4° E 54.8' - SCRIBING VISIBLE  
 NEW BEARING TREES THIS SURVEY  
 13" D. FIR BEARS N 41° W 8.3' - BLAZED, SCRIBED X BT  
 19" D. FIR BEARS N 24° W 34.6' - BLAZED, SCRIBED 1/4 S31 BT  
 17" D. FIR BEARS N 10° E 22.4' - BLAZED, SCRIBED 1/4 S32 BT  
 15" D. FIR BEARS S 42° E 16.0' - BLAZED, SCRIBED 1/4 S32 BT  
 STEEL POST ADJACENT TO CORNER

1/4 CORNER SECTIONS 5, 32  
 FOUND 2-1/2" BRASS CAP DATED 1945  
 WITH THE FOLLOWING ACCESSORIES:  
 25" FIR STUMP BEARS N 19-1/4° E 3.3' - HEALED FACE  
 12" FIR SNAG BEARS S 13-1/2° E 13.3' - ROTTED FACE  
 ROTTED STAUB BEARS S 76° W 37.0' - NO MARKS  
 NEW BEARING TREES THIS SURVEY  
 11" D. FIR BEARS N 52° W 5.7' - BLAZED, SCRIBED 1/4 S32 BT  
 10" D. FIR BEARS N 65° W 9.8' - BLAZED, SCRIBED 1/4 S32 BT  
 16" D. FIR BEARS S 83° E 15.2' - BLAZED, SCRIBED 1/4 S5 BT  
 17" D. FIR BEARS S 32° W 23.4' - BLAZED SCRIBED 1/4 S5 BT  
 STEEL POST ADJACENT TO CORNER

SECTION CORNER SECTIONS 4, 5, 32, 33  
 FOUND 2-1/2" GLO BRASS CAP DATED 1945  
 WITH THE FOLLOWING ACCESSORIES:  
 54" FIR SNAG BEARS S 61° E 43.6' - SCRIBING VISIBLE  
 42" CEDAR STUMP BEARS N 0-1/4° E 73.3' - SCRIBING VISIBLE  
 57" CEDAR STUMP BEARS N 56° W 114.8' - SCRIBING VISIBLE  
 11 FIR BEARS S 82° E 29.7' - HEALED FACE  
 18" FIR BEARS S 0-1/2° W 14.6' - HEALED FACE  
 16" FIR BEARS N 56-1/2° W 25.2' - HEALED FACE  
 ALUMINUM POST ADJACENT TO CORNER

SECTION CORNER SECTIONS 5, 6, 31, 32  
 FOUND 3-1/4" BLM BRASS CAP DATED 1967  
 WITH THE FOLLOWING ACCESSORIES:  
 11" D. FIR BEARS N 11° W 2.9' - HEALED FACE  
 10" D. FIR BEARS N 19° E 13.5' - HEALED FACE  
 20" D. FIR BEARS S 79° E 18.1' - HEALED FACE  
 12" D. FIR BEARS S 2° W 15.8' - HEALED FACE  
 ALL OLDER ACCESSORIES CITED BY SMITHER IN 2002 UNCHANGED WITH THE EXCEPTION OF THE 25" BURNT ROTTING FIR STUMP BEARING N 68-1/2° E 23.5 LKS. - NO MARKS  
 STEEL POST ADJACENT TO CORNER



REGISTERED  
 PROFESSIONAL  
 LAND SURVEYOR  
*Ronald L. Rice*  
 OREGON  
 JULY 9, 2002  
 RONALD L. RICE  
 54633LS

EXPIRATION DATE: 12-31-2014

Northwest Land Surveying, Inc.  
 P. O. Box 2827  
 FLORENCE, OR 97439 541-997-9201

FILE NAME		
13-85	DATE	DRAWN BY
SCALE	2-28-2014	RLR
600 FUM	REVISION	SHEET
JOB		1/1
SCARE RIDGE		

This map drawn with TRAVERSE PC Software

MAP FILE M 167-42