

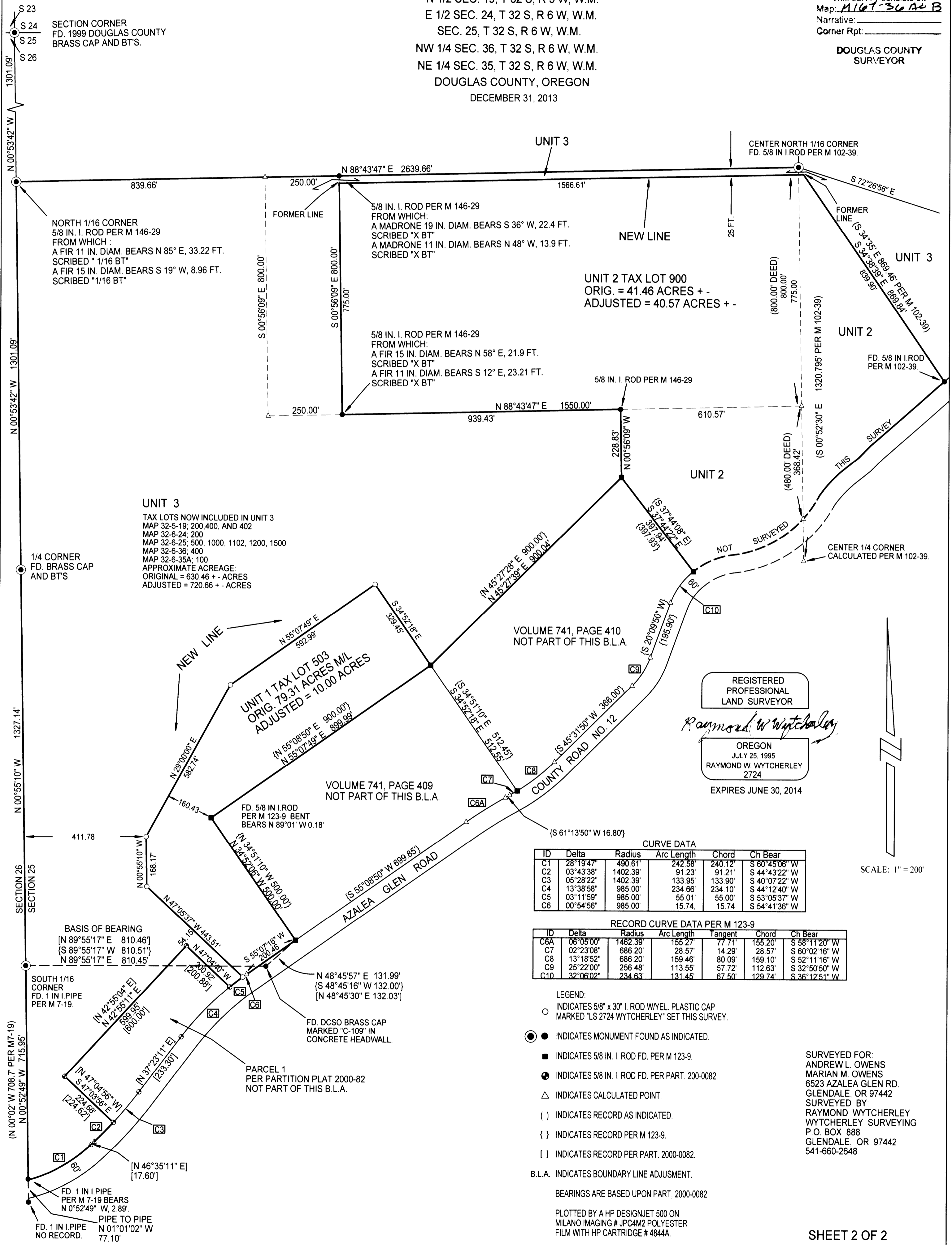
# BOUNDARY LINE ADJUSTMENT SURVEY

LOCATED IN

N 1/2 SEC. 19, T 32 S, R 5 W, W.M.  
 E 1/2 SEC. 24, T 32 S, R 6 W, W.M.  
 SEC. 25, T 32 S, R 6 W, W.M.  
 NW 1/4 SEC. 36, T 32 S, R 6 W, W.M.  
 NE 1/4 SEC. 35, T 32 S, R 6 W, W.M.  
 DOUGLAS COUNTY, OREGON  
 DECEMBER 31, 2013

FILED  
 Date: 2/26/2014 By: JC  
 This survey consists of:  
 Map: M167-36A-B  
 Narrative: \_\_\_\_\_  
 Corner Rpt: \_\_\_\_\_

DOUGLAS COUNTY  
 SURVEYOR



**UNIT 3**  
 TAX LOTS NOW INCLUDED IN UNIT 3  
 MAP 32-5-19; 200, 400, AND 402  
 MAP 32-6-24; 200  
 MAP 32-6-25; 500, 1000, 1102, 1200, 1500  
 MAP 32-6-36; 400  
 MAP 32-6-35A; 100  
 APPROXIMATE ACREAGE:  
 ORIGINAL = 630.46 +- ACRES  
 ADJUSTED = 720.66 +- ACRES

**UNIT 1 TAX LOT 503**  
 ORIG. 79.31 ACRES M/L  
 ADJUSTED = 10.00 ACRES

**UNIT 2 TAX LOT 900**  
 ORIG. = 41.46 ACRES +-  
 ADJUSTED = 40.57 ACRES +-

REGISTERED  
 PROFESSIONAL  
 LAND SURVEYOR  
*Raymond W. Wytcherley*  
 OREGON  
 JULY 25, 1995  
 RAYMOND W. WYTCHERLEY  
 2724  
 EXPIRES JUNE 30, 2014

CURVE DATA

ID	Delta	Radius	Arc Length	Chord	Ch Bear
C1	28°19'47"	490.61'	242.58'	240.12'	S 60°45'06" W
C2	03°43'38"	1402.39'	91.23'	91.21'	S 44°43'22" W
C3	05°28'22"	1402.39'	133.95'	133.90'	S 40°07'22" W
C4	13°38'58"	985.00'	234.66'	234.10'	S 44°12'40" W
C5	03°11'59"	985.00'	55.01'	55.00'	S 53°05'37" W
C6	00°54'56"	985.00'	15.74'	15.74'	S 54°41'36" W

RECORD CURVE DATA PER M 123-9

ID	Delta	Radius	Arc Length	Tangent	Chord	Ch Bear
C6A	06°05'00"	1462.39'	155.27'	77.71'	155.20'	S 58°11'20" W
C7	02°23'08"	686.20'	28.57'	14.29'	28.57'	S 60°02'16" W
C8	13°18'52"	686.20'	159.46'	80.09'	159.10'	S 52°11'16" W
C9	25°22'00"	256.48'	113.55'	57.72'	112.63'	S 32°50'50" W
C10	32°06'02"	234.63'	131.45'	67.50'	129.74'	S 36°12'51" W

- LEGEND:
- INDICATES 5/8" x 30" I. ROD W/YEL. PLASTIC CAP MARKED "LS 2724 WYTCHERLEY" SET THIS SURVEY.
  - INDICATES MONUMENT FOUND AS INDICATED.
  - INDICATES 5/8 IN. I. ROD FD. PER M 123-9.
  - ⊙ INDICATES 5/8 IN. I. ROD FD. PER PART. 200-0082.
  - △ INDICATES CALCULATED POINT.
  - ( ) INDICATES RECORD AS INDICATED.
  - { } INDICATES RECORD PER M 123-9.
  - [ ] INDICATES RECORD PER PART. 2000-0082.
  - B.L.A. INDICATES BOUNDARY LINE ADJUSTMENT.

BEARINGS ARE BASED UPON PART. 2000-0082.  
 PLOTTED BY A HP DESIGNJET 500 ON  
 MILANO IMAGING # JPC4M2 POLYESTER  
 FILM WITH HP CARTRIDGE # 4844A.

SCALE: 1" = 200'