

# MAP OF SURVEY

PORTIONS OF SECTIONS 2,3,&10,  
TOWNSHIP 33S, R7W, WILLAMETTE MERIDIAN  
DOUGLAS COUNTY, OREGON

## SURVEY BY AND FOR:

STATE OF OREGON, DEPARTMENT OF FORESTRY  
2600 STATE STREET  
SALEM, OR 97310

DECEMBER 2013

### NARRATIVE

THIS PURPOSE OF THIS SURVEY IS TO RE-ESTABLISH PROPERTY BOUNDARIES FOR PORTIONS OF OREGON DEPARTMENT OF FORESTRY LANDS DESCRIBED IN DOUGLAS COUNTY RECORDS DEED VOLUME 109, PAGE 579. PORTIONS OF THESE PROPERTIES WERE BURNED IN THE DOUGLAS COMPLEX FIRE OF 2013. A DOUBLE ANGLE TRAVERSE WAS RUN BETWEEN EXISTING MONUMENTS WITH A NIKON NPL350 TOTAL STATION. TRUE LINE WAS POSTED WITH ORANGE PAINTED BLAZES, 5' X 3/8" DIAMETER FIBERGLASS RODS SPACED AT 100' TO 300' INTERVALS AND 5' METAL "T" POSTS PLACED NEAR THE CORNERS AS INDICATED AND ALSO ALONG THE BOUNDARY LINES AT 400' TO 600' INTERVALS. THE TOP PORTIONS OF THE FIBERGLASS RODS AND "T" POSTS WERE PAINTED ORANGE. LINES WERE FLAGGED WITH ORANGE AND BLUE RIBBON. MANY OF THE BEARING TREES ARE DEAD AS NOTED. NO SUITABLE REPLACEMENT TREES WERE AVAILABLE.

FILED

Date: 2-18-2014 By: DC

This survey consists of:

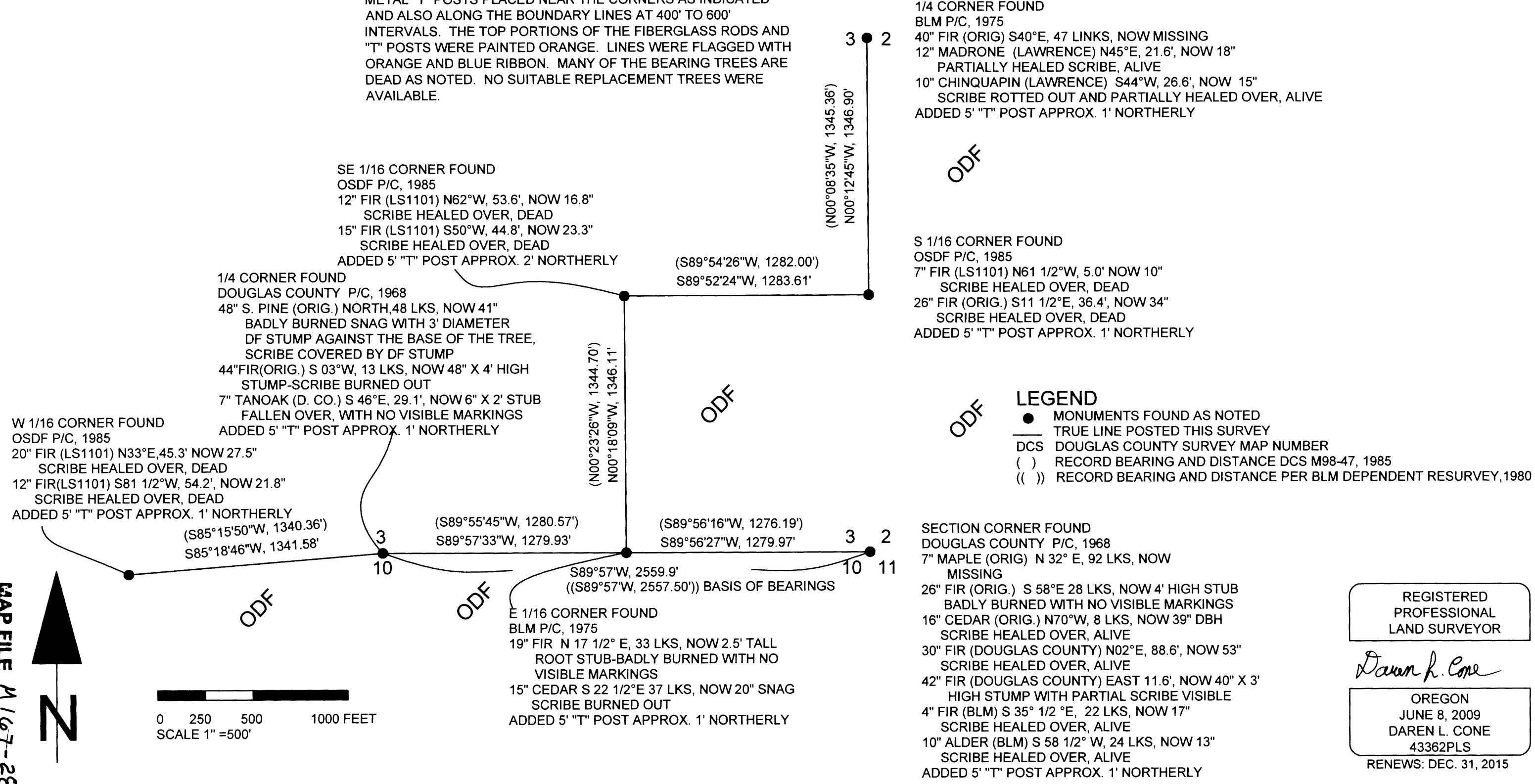
Map: M167-28

Narrative: \_\_\_\_\_

Corner Rpt: \_\_\_\_\_

DOUGLAS COUNTY  
SURVEYOR

MAP FILE M167-28



ODF

ODF

ODF

### LEGEND

- MONUMENTS FOUND AS NOTED
- TRUE LINE POSTED THIS SURVEY
- DCS DOUGLAS COUNTY SURVEY MAP NUMBER
- ( ) RECORD BEARING AND DISTANCE DCS M98-47, 1985
- (( )) RECORD BEARING AND DISTANCE PER BLM DEPENDENT RESURVEY, 1980

REGISTERED  
PROFESSIONAL  
LAND SURVEYOR

*Daren L. Cone*

OREGON  
JUNE 8, 2009  
DAREN L. CONE  
43362PLS

RENEWS: DEC. 31, 2015

MAP FILE M167-28