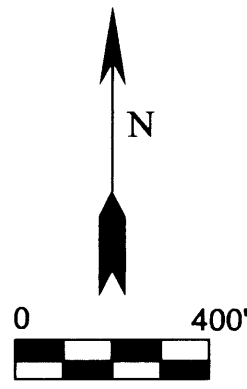


RECORD OF SURVEY
 FOR: OXBOW TIMBER 1 L.L.C.
 NE 1/4, SE 1/4, SECTION 12, T. 22 S., R. 9 W., W.M.
 DOUGLAS COUNTY, OREGON
 27 JANUARY 2014

FILED
 DATE: 2-7-2014 BY: JG
 THIS SURVEY CONSISTS OF:
 MAP: M167-23
 NARRATIVE:
 CORNER RPT: _____

DOUGLAS COUNTY
 SURVEYOR

1/4 CORNER SECTIONS 1, 12
 FOUND 8" BELOW ROAD SURFACE 2" BRASS CAP
 DATED 1996 WITH THE FOLLOWING ACCESSORIES:
 5'X15" D. FIR STUMP BEARS N 62°E, 21.2' - HEALED FACE
 5'X12" D. FIR STUMP BEARS S 29°E, 31.1' - HEALED FACE
 4'X15" D. FIR STUMP BEARS S 66°W, 23.4' - HEALED FACE
 7'X19" D. FIR STUMP BEARS N 17°W, 19.8' - HEALED FACE
 1 1/2" IRON PIPE, BEARS N 81°24'13"W, 78.81'



BASIS OF BEARING [N 0°21'25" W 2610.36']

NARRATIVE:

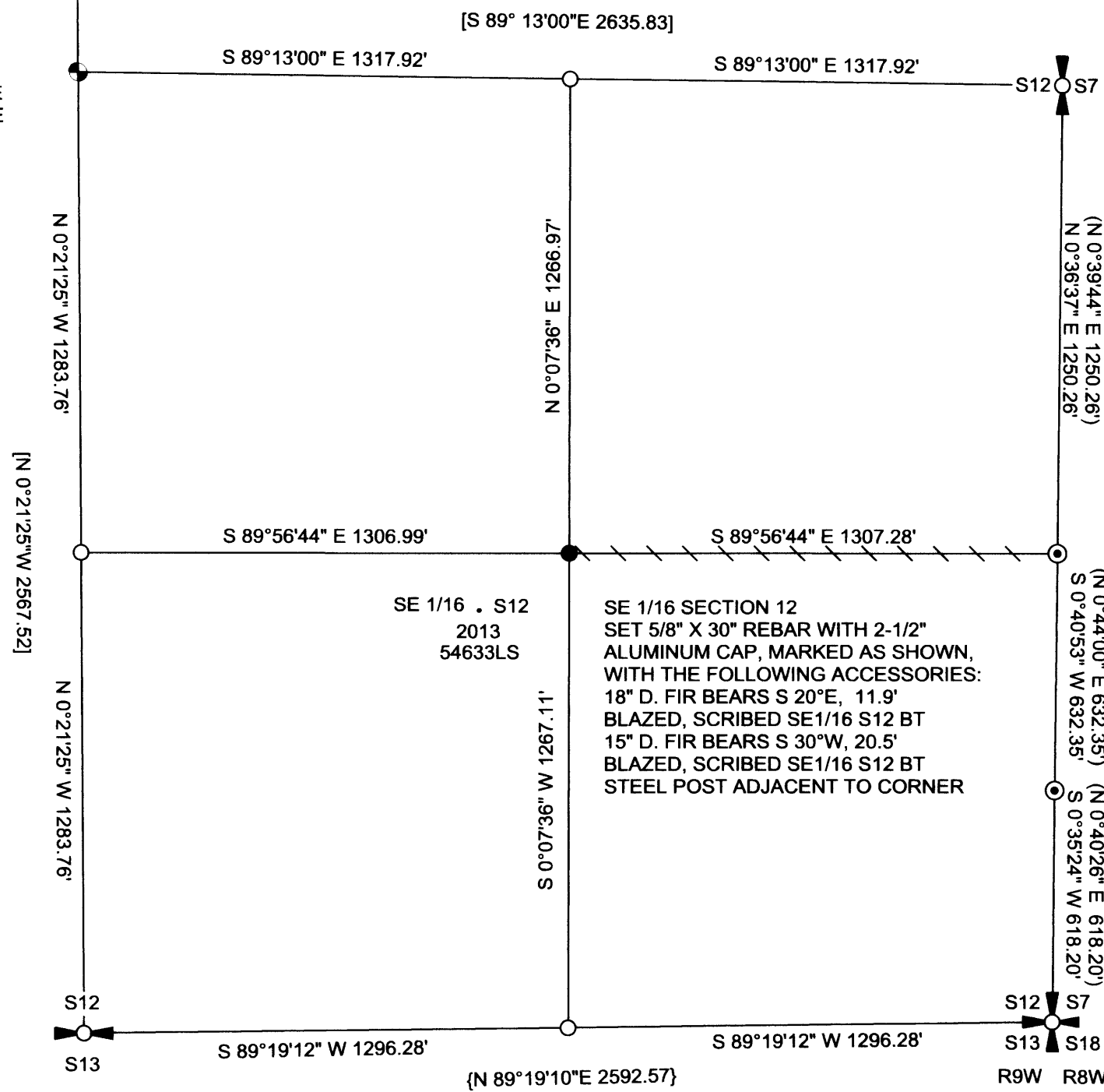
THE PURPOSE OF THIS SURVEY WAS TO SET THE SOUTHEAST 1/16 CORNER AND MARK TRUE LINE TO THE SOUTH 1/16 CORNER ON THE EAST LINE OF SECTION 12, TOWNSHIP 22 SOUTH, RANGE 9 WEST, WILLAMETTE MERIDIAN.

AS-TIED CORNERS REFERENCED IN COUNTY SURVEY FILE M 126-23 WERE HELD FOR CONTROL OF THE CENTER 1/4 CORNER, EAST 1/4 CORNER AND SOUTH 1/4 CORNER. THIS ALLOWED ME TO CALCULATE THE POSITION OF THE CENTER SOUTH 1/16 CORNER AND CENTER EAST 1/16 CORNER. THE POSITION OF THE SOUTHEAST CORNER OF SECTION 12 WAS CALCULATED BASED ON A DISTANCE - DISTANCE INTERSECTION USING RECORD DATA FROM COUNTY SURVEY FILE M 127-17 AND THE 2009 BUREAU OF LAND MANAGEMENT DEPENDENT RESURVEY OF SECTION 7, TOWNSHIP 22 SOUTH, RANGE 8 WEST, WILLAMETTE MERIDIAN. THIS ALLOWED ME TO CALCULATE THE POSITION OF THE EAST 1/16 CORNER ON THE SOUTH LINE OF SECTION 12 AND COMPLETE THE SUBDIVISION ON THE SOUTHEAST QUARTER OF SECTION 12.

THE NORTH 1/4 CORNER AND CENTER 1/4 CORNER OF SECTION 12 WERE TIED BY TRAVERSE AND USED AS THE BASIS OF BEARING FOR THIS SURVEY, COUNTY SURVEY FILE M 126-23. A CLOSED POINT TO POINT TRAVERSE BETWEEN THE CENTER 1/4 CORNER AND SOUTH 1/16 CORNER ON THE EAST LINE OF SECTION 12 WAS USED AS CONTROL FOR ESTABLISHING THE SOUTHEAST 1/16 CORNER AND MARKING THE ABOVE REFERENCED TRUE LINE. TRUE LINE REFERRED AS "POSTED" WAS MARKED WITH RED PAINTED BLAZES, RED FLAGGING AND 5-1/2" GALVANIZED STEEL POSTS, SET AND AVERAGE INTERVAL OF 200'.

THIS SURVEY WAS PERFORMED USING A NIKON TOTAL STATION.

CENTER 1/4 SECTION 12
 FOUND 2" BRASS CAP DATED 1996
 WITH THE FOLLOWING ACCESSORIES:
 RECORD 15" D. FIR BEARS N 79°E, 42.5' - DOWN
 7'X23" D. FIR STUMP BEARS S 45°E, 9.1' - HEALED FACE
 6'X15" D. FIR STUMP BEARS S 64°W, 28.3' - HEALED FACE
 1'X15" D. FIR STUMP BEARS N 35°W, 19.8' - HEALED FACE
 STEEL POST ADJACENT TO CORNER



1/4 CORNER SECTIONS 7, 12, RECORD BLM ALUMINUM CAP DATED 2008, NOT VISITED THIS SURVEY

S 1/16 SECTIONS 7, 12
 FOUND 2" ALUMINUM CAP DATED 1991
 WITH FOLLOWING ACCESSORIES:
 16" D. FIR BEARS S 87°E, 7.5' - HEALED FACE
 17" D. FIR BEARS S 21°W, 10.0' - HEALED FACE
 STEEL POST ADJACENT TO CORNER

CLOSING CORNER SECTIONS 7, 12,
 RECORD 3-1/4" BLM BRASS CAP DATED
 2008, NOT VISITED THIS SURVEY

SECTION CORNER SECTIONS 7, 12, 13, 18,
 RECORD 2-1/2" GLO BRASS CAP DATED
 1931, NOT VISITED THIS SURVEY

1/4 CORNER SECTIONS 12, 13
 RECORD 3-1/4" BLM BRASS CAP
 DATED 1993, NOT VISITED THIS
 SURVEY

LEGEND

- CALCULATED POSITION NO MONUMENT FOUND OR SET
- ⊕ QUARTER CORNER AS NOTED
- ⊕ SECTION CORNER AS NOTED
- MONUMENT SET THIS SURVEY AS NOTED
- ⊕ CENTER QUARTER AS NOTED
- ⊕ MONUMENT OF RECORD AS NOTED
- [] RECORD DATA M 126-23
- { } RECORD DATA M 127-17
- () RECORD DATA BUREAU OF LAND MANAGEMENT 2009 DEPENDENT RESURVEY OF SECTION 7, T22S, R8W, W.M.
- POSTED LINE

REGISTERED
 PROFESSIONAL
 LAND SURVEYOR

Ronald L. Rice
 OREGON
 JULY 9, 2002
 RONALD L. RICE
 54633LS

EXPIRATION DATE: 12-31-2014



Northwest Land Surveying, Inc.
 P. O. Box 2827
 FLORENCE, OR 97439 541-997-9201

FILE NAME		
13-97.TRV		
SCALE	DATE	DRAWN BY
400 Ft/In	1-27-2014	CK
JOB	REVISION	SHEET
JOB 13-97	-----	1/1

This map drawn with TRAVERSE PC Software