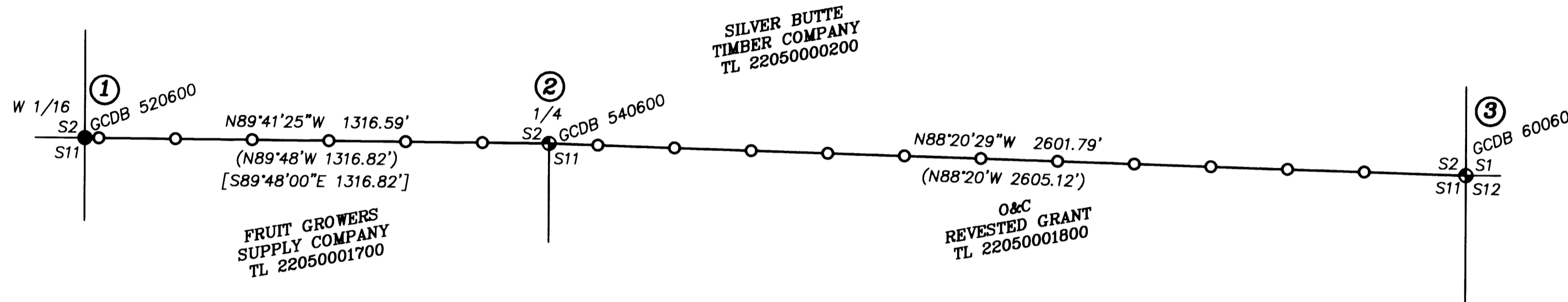
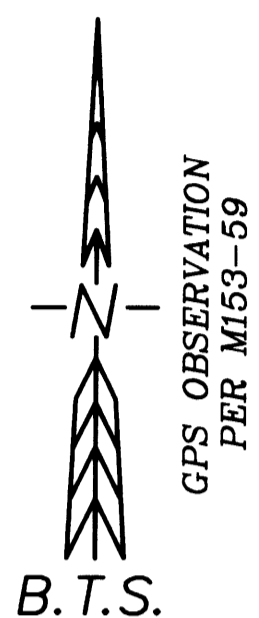


FILED

Date: 1/21/2014 By: K.W.
This Survey Consists of:
Map: M 167-14
Narrative:
Corner Rpt.:
DOUGLAS COUNTY
SURVEYOR

RECORD OF SURVEY

LOCATED IN
SECTION 2, T.22S., R.5W., W.M.
DOUGLAS COUNTY, OREGON



CORNER DESCRIPTIONS:

① **W 1/16 S2/S11**
FOUND A 5/8" IRON ROD BY REX BETZ IN 1999 PER M131-27, FIRMLY SET FLUSH WITH THE GROUND, WITH A YELLOW PLASTIC CAP MARKED "BRANCH ENGINEERING" FROM WHICH BEARING TREES MARKED BY BETZ IN 1999:
A 16" D.FIR SAW STUMP BEARS RECORD N.8°E., 22.5 FT. WITH HEALED BLAZE
A 12" D.FIR HIGH STUMP BEARS RECORD S.33°E., 12.1 FT. WITH HEALED BLAZE
AND A REFERENCE MONUMENT PER M131-27:
A 1" IRON PIPE BEARS RECORD N.22°57'45"W., 0.76 FT.

CORNER LIES AT THE WESTERLY EDGE OF RECENTLY LOGGED UNITS TO THE EAST, AND YOUNG RE-PROD UNITS TO THE WEST. NO NEW BT'S WERE TAKEN

② **1/4 S2/S11**
FOUND A 1 1/4" IRON POST BY BRUCE SHANER IN 1972 PER M49-12, FIRMLY SET, PROJECTING 12" ABOVE AN 18" MOUND OF STONE, WITH A 2 1/2" BRASS CAP MARKED:

T22S R5W WM
S2
S11
1/4 S
1972

FROM WHICH BEARING TREES BY SHANER IN 1972:
A 20" D.FIR STUMP BEARS N.53°45'E., 15.4 FT. WITH NO MARKS VISIBLE (N.56°E., 15.5')
A 51" D.FIR BEARS S.69°15'W., 7.7 FT. WITH HEALED SINGLE BLAZE (S.67°15'W., 8.3')
AND UN-RECORDED BEARING TREES BY DAN BAKER, PLS 1978 IN 2010:
A 6" D.FIR BEARS N.57°15'E., 13.5 FT WITH VISIBLE "X" UPPER BLAZE AND PITCHED OVER LOWER BLAZE. (TAG N.61°E., 13.8')
A 11" D.FIR BEARS S.38°E., 8.6 FT WITH PITCHED OVER SINGLE BLAZE.
(TAG S.35°E., 8.7')

③ **S1/S2/S11/A12**
FOUND A 1 1/4" IRON POST BY JAMES BYRON IN 1958, FIRMLY SET IN THE BASE OF THE NW HEMLOCK BEARING TREE, PROJECTING 10" ABOVE THE GROUND, WITH A 2 1/2" BRASS CAP MARKED:

T22S
S2 | S1
S11 | S12
R5W
1958

ALL BEARING TREES OF RECORD ARE STANDING AND IN GOOD CONDITION. THE ORIGINAL SE BEARING TREE, A 33" HEMLOCK (S.43°E., 43iks), IS NOW A HIGH STUMP FROM RECENT LOGGING IN SEC 12.

LEGEND:

- ⊙ = FOUND BCIP AS NOTED
- = FOUND 5/8" IRON ROD PER M131-27
- () = RECORD PER M49-12
- [] = RECORD PER M131-27
- = PROPERTY LINES BLAZED, PAINTED & POSTED WITH 5 1/2' STEEL POSTS.

GEODETIC COORDINATES:

LISTED BELOW ARE THE NAD83 CORS96 (EPOCH 2002.00) GEODETIC COORDINATES FROM THIS CURRENT SURVEY, ALONG WITH THOSE FROM M153-59.

NAD83 CORS96 (EPOCH 2002.00)		
GCDB NO.	LATITUDE	LONGITUDE
520600	43°40'42.40230"N	123°15'45.95233"W
540600	43°40'42.33413"N	123°15'28.03798"W
600600	43°40'41.59232"N	123°14'52.65083"W
600640	43°41'07.58039"N	123°14'52.63048"W
600700	43°41'32.92650"N	123°14'52.59817"W

NARRATIVE:

THE PURPOSE OF THIS SURVEY IS TO POST, PAINT AND BLAZE THE SOUTH BOUNDARY OF SILVER BUTTE BUTTE TIMBER CO. PROPERTY IN SECTION 2, FROM THE SECTION CORNER OF 1, 2, 11, AND 12 TO THE W 1/16 CORNER OF 2 AND 11.

THE SECTION CORNER OF 1, 2, 11, AND 12 WAS PERPETUATED BY JAMES BYRON IN 1958 FROM ORIGINAL EVIDENCE.

THE EAST 1/2 MILE BETWEEN THE SECTION CORNER OF 1, 2, 11, AND 12 AND THE 1/4 CORNER OF 2 AND 11 WAS SURVEYED BY BRUCE SHANER IN 1972 UNDER M49-12, WHICH MONUMENTED THE 1/4 CORNER FROM ACCEPTED EVIDENCE AND POSTED THE BOUNDARY LINE WITH 5' T-POSTS & BLM BOUNDARY TAGS. I FIND MOST OF THE EXISTING POSTS WITHIN 1'-2' OF TRUE LINE. DURING POSTING I ADJUST THOSE POSTS TO TRUE LINE.

THE W 1/16 CORNER WAS MONUMENTED BY REX BETZ IN 1999 PER M131-27. THE BOUNDARY LINE BETWEEN THE W 1/16 CORNER AND THE 1/4 CORNER WAS POSTED AND BLAZED BY DAN BAKER, PLS 1978, IN A 2010 UN-RECORDED TIMBER SURVEY FOR FRUIT GROWERS SUPPLY COMPANY. ALL EXISTING POSTS FROM 2010 WERE TIED AND FOUND TO BE ONLINE.

THE ORIGINAL GPS CONTROL FROM THE 2007 BTS SURVEY OF THE EAST LINE OF SECTION 2 UNDER M153-59, BASED ON AN OPUS SOLUTION, WAS UTILIZED AND NEW STATIC GPS POINTS WERE PROCESSED INTO THE M153-59 COORDINATE SYSTEM. A CONVENTIONAL TRAVERSE WAS RUN ALONG THE BOUNDARY LINE, AND ADJUSTED IN LEICA GEO OFFICE BY THE METHOD OF LEAST SQUARES. THE BOUNDARY LINE WAS POSTED WITH 5 1/2' STEEL POSTS, WITH TREES BLAZED WITHIN 3'-5' OF LINE.

THIS SURVEY WAS PERFORMED BY KRIS & ADAM DEGROOT UTILIZING LEICA GRX1230 GPS RECIEVERS AND A LEICA TCRP1203 TOTAL STATION, WITH COMPUTATIONS AND DRAFTING BY ADAM DEGROOT.

REGISTERED
PROFESSIONAL
LAND SURVEYOR

Kristian O. Degroot

OREGON
JULY 17, 1981
KRISTIAN O. DEGROOT
1941

RENEWAL DATE: 12-31-2015

BTS ENGINEERING & SURVEYING, INC.
431 S.E. MAIN ST., ROSEBURG, OR 97470
PHONE (541) 673-0966 FAX (541) 673-0105

SCALE: 1" = 300'
DATE: JANUARY 21, 2014

FOR: SILVER BUTTE TIMBE CO.
PO BOX 4
RIDDLE, OR 97469

JOB #: 14-003
FILE: JOHNSONCREEK2.DWG
SHEET 1 OF 1

MAP FILE M 167-14

MAP FILE M 167-14