

MAP OF SURVEY

LOCATED in Sections 26 and 27, T. 22 S., R. 8 W., W.M.
in Douglas County, Oregon.

January 13, 2014

FILED
Date: 1/14/2014 by: DW
This survey consists of:
Map: M 167-12
Narrative:
Corner Rpt:

DOUGLAS COUNTY
SURVEYOR

SURVEYED FOR: BECKLEY BROTHERS
MILLMAN TRUST
2032 WHY WORRY LANE
EUGENE, OREGON 97405

AND

ROSEBURG RESOURCES CO.
23129 VAUGHN ROAD
VENETA, OREGON 97487

SURVEYED BY: DAVID EDWARDS LAND SURVEYING
P.O. BOX 361
OAKLAND, OREGON 97462
PHONE: (541) 459-0512



LEGEND

- ⊙ INDICATES B.L.M. BRASS CAP FOUND.
- ⊠ INDICATES ALUMINUM CAPPED PIPE FOUND PER M 100-31.
- INDICATES 5/8" X 30" STEEL REBAR W/RED PLASTIC CAP MKD. "D.A. EDWARDS-LS 2339" SET.
- () DENOTES B.L.M. RECORD SURVEY DATA UNLESS OTHERWISE NOTED.

H.B. = HEALED BLAZE.

SCALE: 1" = 400'

BASIS OF BEARINGS: M 100-31 AS SHOWN.

NARRATIVE

THE PURPOSE OF THIS SURVEY SURVEY, MONUMENT, POST AND BLAZE THE WEST, NORTH AND EAST LINES OF GOVERNMENT LOT II IN SECTION 27 AND THE SOUTH LINE OF THE SW 1/4 OF THE SW 1/4 IN SECTION 26. A SERIES OF TRAVERSES WERE RUN WHICH TIED IN THE CONTROLLING MONUMENTS WITH THE TRUE LINES BEING MARKED BY BLAZING TREES ON EACH SIDE OF LINE, BY SETTING 6 FOOT STEEL POSTS ALONG THE LINES AT INTERVALS OF 200 FEET OR LESS AND BY HANGING LIBERAL AMOUNTS OF RED FLAGGING ALONG THE TRUE LINES. BEARING TREES WERE SCRIBED ACCORDING TO THE 2009 B.L.M. MANUAL, MEASURED TO CENTER OF TREE AT ROOT CROWN AND ARE SITUATED AS FOLLOWS:

AT THE WEST 1/16 CORNER COMMON TO SECTIONS 26 AND 35:

- AN 8" DIAM. MAPLE BEARS N.57°W., 13.42 FEET.
- A 9" DIAM. MAPLE BEARS S.44°W., 7.42 FEET.
- A 6 FOOT STEEL POST IS SET 2 FEET EAST.

AT THE CE 1/16 CORNER OF SECTION 27:

- A 12" DIAM. D. FIR BEARS N.12°E., 20.25 FEET.
- A 6" DIAM. D. FIR BEARS S.61°W., 7.80 FEET.
- A 6 FOOT STEEL POST IS SET 2 FEET SOUTH.

AT THE SE CORNER OF GOVERNMENT LOT II:

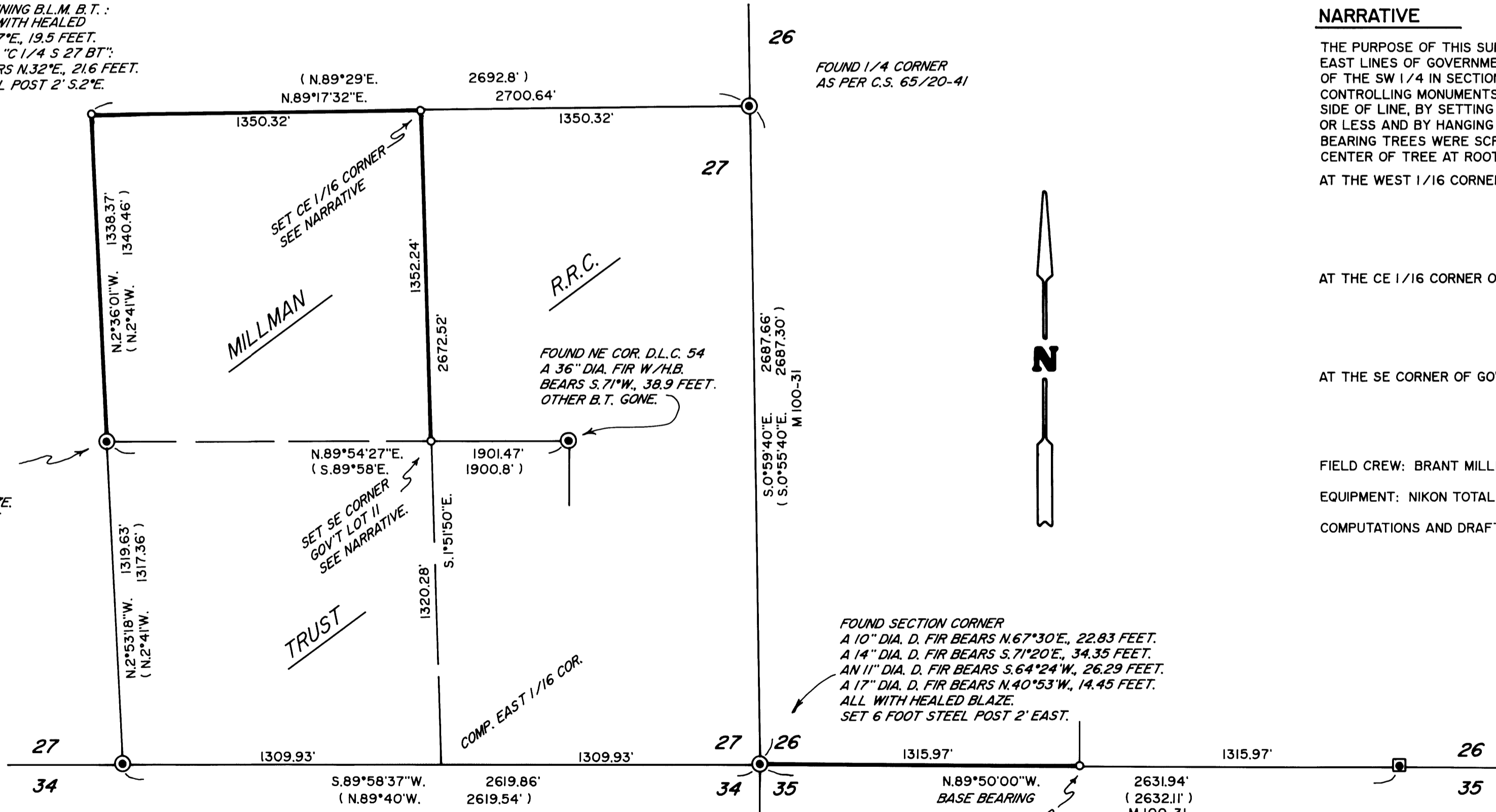
- A 4" DIAM. D. FIR BEARS N.33°E., 30.90 FEET.
- A 14" DIAM. D. FIR BEARS N.1°W., 102.2 FEET.
- A 6 FOOT STEEL POST IS SET 2 FEET NORTH.

FIELD CREW: BRANT MILLER AND ERIC SPRINKLE.

EQUIPMENT: NIKON TOTAL STATION.

COMPUTATIONS AND DRAFTING: DAVID EDWARDS.

RESET THE CENTER 1/4 CORNER FROM THE SINGLE REMAINING B.L.M. B.T. : A 23" DIA. W. FIR WITH HEALED BLAZE BEARS S.47°E., 19.5 FEET. NEW B.T. SCRIBED "C 1/4 S 27 BT": 8" DIA. D. FIR BEARS N.32°E., 21.6 FEET. SET 6 FOOT STEEL POST 2' S.2°E.



FOUND CLOSING CORNER A 28" DIA. W. FIR BEARS N.47°E., 98.3 FEET. A 22" DIA. W. FIR BEARS N.28°W., 47.5 FEET. BOTH WITH HEALED BLAZE. SET 6 FOOT STEEL POST 2' N.2°W.

FOUND 1/4 CORNER AS PER C.S. 65/20-41

R.R.C.

FOUND NE COR. D.L.C. 54 A 36" DIA. FIR W/H.B. BEARS S.71°W., 38.9 FEET. OTHER B.T. GONE.

SET SE CORNER GOV'T LOT II SEE NARRATIVE.

TRUST

COMP. EAST 1/16 COR.

FOUND SECTION CORNER A 10" DIA. D. FIR BEARS N.67°30'E., 22.83 FEET. A 14" DIA. D. FIR BEARS S.71°20'E., 34.35 FEET. AN 11" DIA. D. FIR BEARS S.64°24'W., 26.29 FEET. A 17" DIA. D. FIR BEARS N.40°53'W., 14.45 FEET. ALL WITH HEALED BLAZE. SET 6 FOOT STEEL POST 2' EAST.

FOUND 1/4 CORNER 32" DIA. FIR BEARS N.4°E., 91.1 FEET. A 20" DIA. FIR BEARS S.38 1/2°W., 55.4 FEET. BOTH WITH HEALED BLAZE.

NOTE: THE B.L.M. RECORD DISTANCE SHOWN HERE IS PER THE LINENOTES. THE 1966 B.L.M. PLAT HAS AN ERRONEOUS DISTANCE SHOWN AS 29.92 CHAINS WHICH SHOULD BE 27.92 CHAINS.

FOUND 1/4 CORNER A 33" DIA. OAK BEARS N.14°20'E., 128.5 FEET. A 26" DIA. OAK BEARS S.21°45'E., 73.4 FEET. BOTH WITH HEALED BLAZE.

SET WEST 1/16 CORNER SEE NARRATIVE

MAP FILE M 167-12

MAP FILE M 167-12