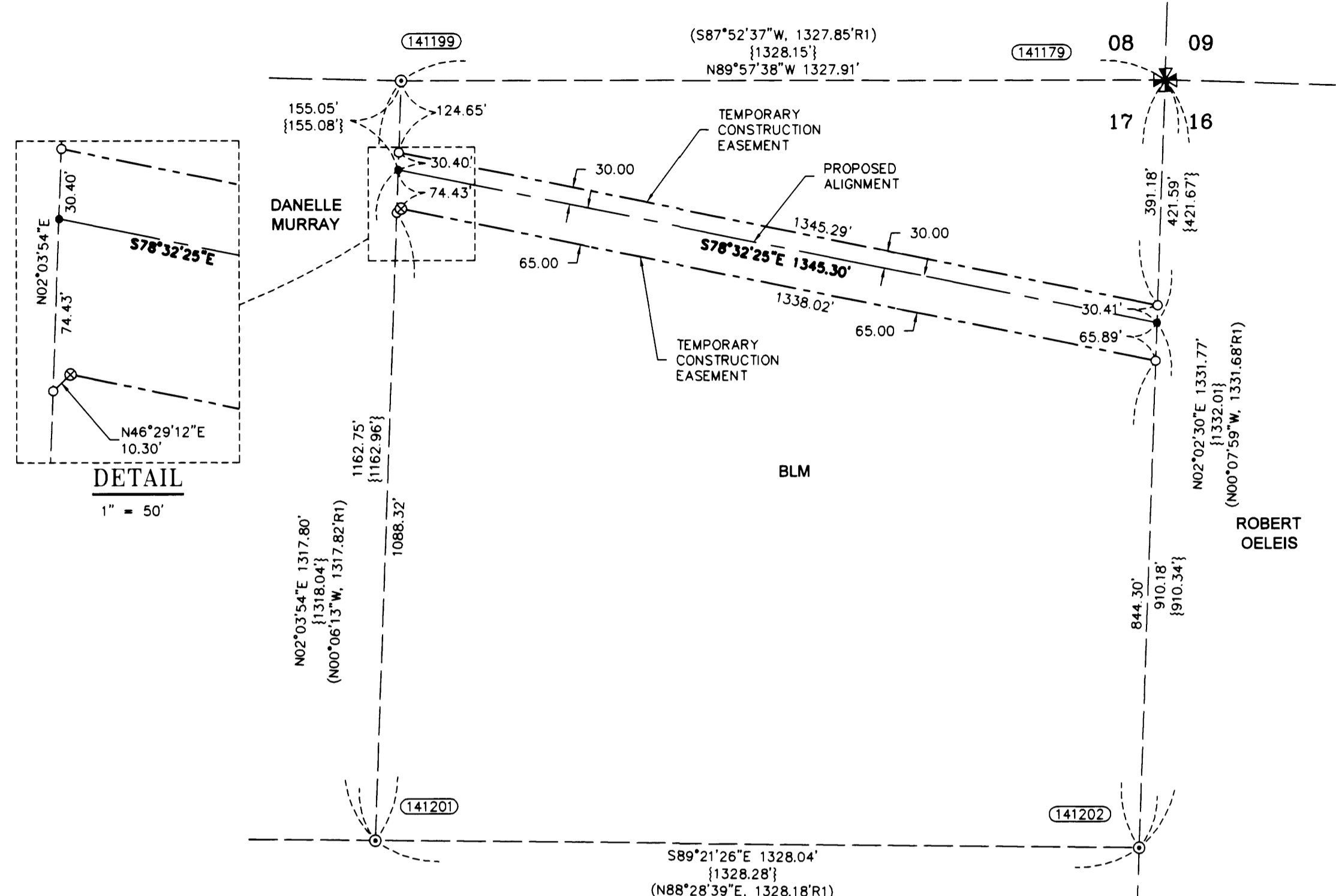


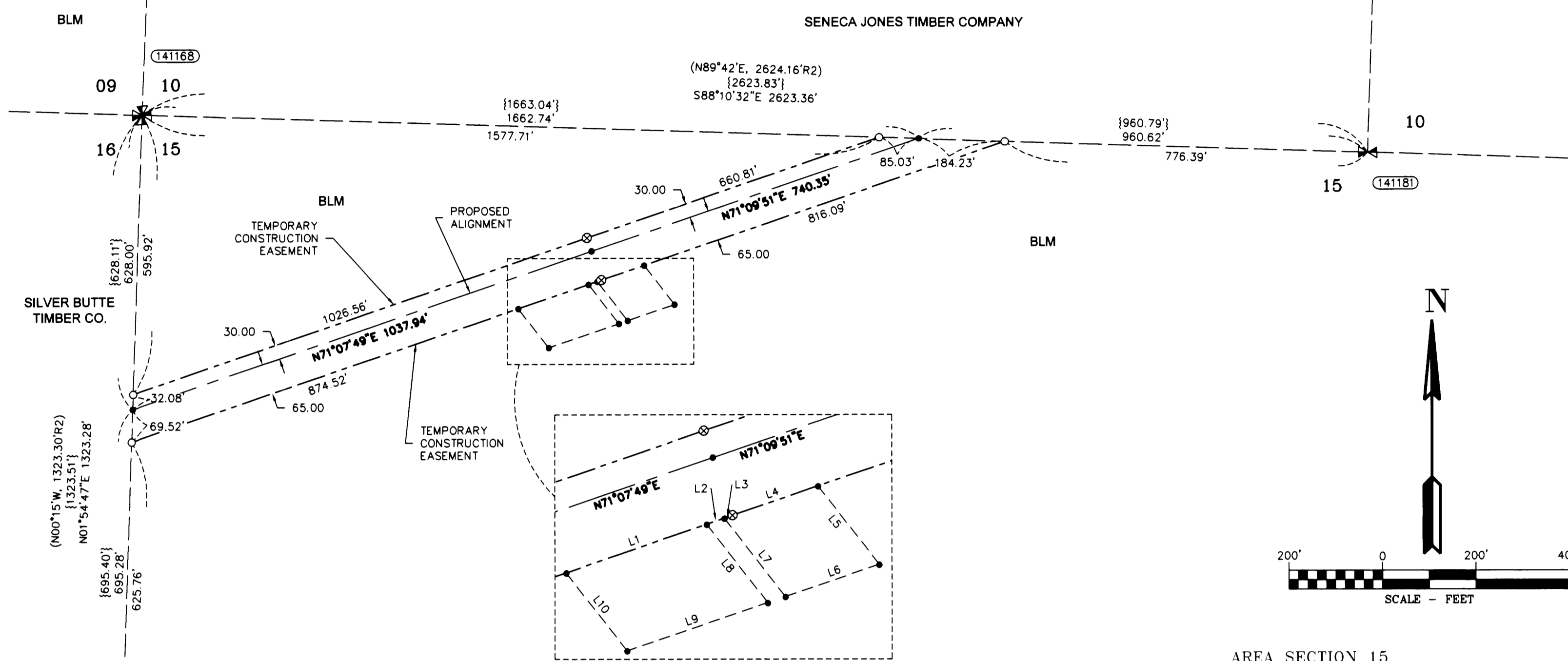
AMENDED RECORD OF SURVEY

(SURVEY M166-24)
 LOCATED IN THE
 NE 1/4 OF SECTION 17
 AND
 NW 1/4 OF SECTION 15
 TOWNSHIP 29 SOUTH, RANGE 8 WEST, W.M.
 DOUGLAS COUNTY, OREGON

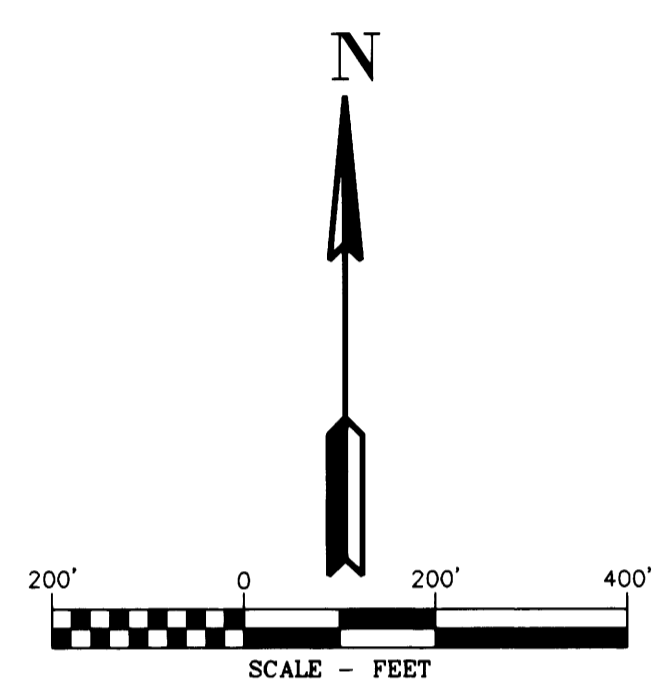
FILED
 Date: 8-24-2015 By: JC
 This survey consists of:
 Map: M166-41 A-D
 Narrative:
 Corner Rpt:
 DOUGLAS COUNTY
 SURVEYOR



AREA SECTION 17	
TEMPORARY CONSTRUCTION EASEMENT	2.93 ACRES



AREA SECTION 15	
TEMPORARY CONSTRUCTION EASEMENT	3.99 ACRES
TEMPORARY WORK AREA	0.61 ACRES



CORNER NOTES:

- (141179)**
 NE CORNER SECTION 17
 FOUND 2.5" BRASS CAP
 STAMPED COUNTY SURVEYORS OFFICE 1958
 RESET 2009.
 BT REFERENCES:
 1) FOUND 27" CEDAR WITH HEALED FACE AND TAG DATED 11/95
 N 49° E - 47.5'
 2) FOUND 17" FIR WITH HEALED FACE AND TAG DATED 11/95
 S 57° E - 35.0'
 3) FOUND 22" FIR WITH HEALED FACE AND TAG DATED 11/95
 S 68-1/4" W - 46.9'
 4) FOUND 23" CEDAR WITH HEALED FACE AND TAG DATED 11/95
 N 11-1/2" W - 60.1'
- (141199)**
 EAST 1/16 CORNER SECTIONS 17/8
 FOUND 2" ALUMINUM CAP
 STAMPED R.R.CO LS 2354 DATED 1995
 BT REFERENCES:
 1) FOUND 18" FIR WITH HEALED FACE N 03-1/2° E - 35.6'
 2) FOUND 18" FIR SNAG 40" TALL WITH HEALED FACE AND TAG DATED 11/95
 N 48-1/4° E - 37.0'
 3) FOUND 20" FIR WITH HEALED FACE AND TAG DATED 11/95
 S 75-3/4° E - 33.7'
 4) FOUND 20" FIR WITH HEALED FACE AND TAG DATED 11/95
 S 47° E - 40.3'
- (141201)**
 NE 1/16 CORNER SECTION 17
 FOUND 3.25" BRASS CAP
 STAMPED BLM 1995
 BT REFERENCES:
 1) FOUND 9.5" OAK WITH HEALED FACE AND TAG DATED 11/95
 N 43-3/4° E - 62.7'
 2) FOUND 19" FIR WITH HEALED FACE AND TAG DATED 11/95
 N 0-1/4° E - 15.8'
- (141202)**
 NORTH 1/16 CORNER SECTIONS 16/17
 FOUND 3.25" BRASS CAP
 STAMPED BLM 1995
 BT REFERENCES:
 1) FOUND 8" OAK WITH HEALED FACE S 14-3/4° E - 50.8'
 2) FOUND 23" FIR WITH HEALED FACE AND TAG DATED 11/95
 N 59-1/2° W - 16.8'

CORNER NOTES:

- (141168)**
 NW CORNER SECTION 15
 FOUND 2.5" BRASS CAP
 STAMPED COUNTY SURVEYORS OFFICE 1958
 BT REFERENCES:
 1) FOUND 48" FIR STUMP AND TAG DATED 3/1/78
 N 10° E - 24.5'
 2) FOUND 23.5" FIR WITH HEALED FACE TAG DATED 3/1/78
 S 13° E - 34.0'
 3) FOUND 16" FIR WITH HEALED FACE AND TAG DATED 3/1/78
 S 59° W - 41.0'
 4) FOUND 19" FIR WITH HEALED FACE N 71° W - 15.4'
- (141184)**
 NORTH 1/4 CORNER SECTION 15
 FOUND 3.25" BRASS CAP
 STAMPED BLM 1980
 BT REFERENCES:
 1) FOUND 15" FIR SNAG 12" TALL WITH HEALED FACE AND TAG DATED 7/80
 S 0-1/2° W - 6.9'
 2) FOUND 22" FIR WITH HEALED FACE TAG DATED 7/80
 N 50° W - 24.4'
 3) FOUND BT. PER M166-24 21.5" CHINQUAPIN WITH BLAZED FACE AND TAG DATED 4/12/14
 S 40° W - 13.2' TO NAIL SIDE CENTER
- (141185)**
 NORTH 1/16 CORNER SECTIONS 15/16
 FOUND 3.25" BRASS CAP
 STAMPED BLM 1982
 BT REFERENCES:
 1) FOUND 16" FIR WITH HEALED FACE AND TAG DATED 7/82
 N 78° E - 10.9'
 2) FOUND 19" FIR WITH HEALED FACE AND TAG DATED 7/82
 N 77-1/2° W - 18.8'
- (141189)**
 WEST 1/4 CORNER SECTION 15
 FOUND 3.25" BRASS CAP
 STAMPED BLM 1982
 BT REFERENCES:
 1) FOUND 18.5" FIR WITH HEALED FACE AND TAG DATED 7/82
 S 85° E - 13.2'
 2) FOUND 19" FIR WITH HEALED FACE AND TAG DATED 7/82
 N 24-1/2° W - 19.8'

LINE TABLE

Line #	Direction	Length
L1	N71°07'49"E	158.80'
L2	N71°07'49"E	20.02'
L3	N71°07'49"E	9.28'
L4	N71°09'51"E	96.60'
L5	N38°01'58"W	105.89'
L6	N71°09'51"E	105.89'
L7	S38°01'54"E	105.88'
L8	N38°02'03"W	105.87'
L9	N71°07'53"E	158.80'
L10	S38°01'56"E	105.87'

LEGEND

- SET 5/8" X 24" REBAR WITH 1 1/4" YELLOW PLASTIC CAP FROM SURVEY M166-24 VERIFIED OR RESET THIS AMENDED SURVEY. (KLEIN & ASSOC. PLS 59002)
- ⊙ SET 5/8" X 24" REBAR WITH 1 1/4" YELLOW PLASTIC CAP FROM SURVEY M166-24 VERIFIED OR RESET THIS AMENDED SURVEY. (DYER PARTNER LS 2340)
- ⊙ FOUND MONUMENT AS NOTED (SEE CORNER NOTES)
- ▲ CORNER SEARCHED AND NOT FOUND SEE CORNER NOTES
- COMPUTED POINT, NOT MONUMENTED
- ⊗ FOUND QUARTER CORNER SEE CORNER NOTES
- ⊗ FOUND SECTION CORNER SEE CORNER NOTES
- ⊗ COMPUTED QUARTER CORNER
- ⊗ COMPUTED SECTION CORNER
- 100000 POINT NUMBER
- {xxx.xx'} GROUND DISTANCE
- {xxx.xx'} RECORD DISTANCE PER REFERENCED SURVEY
- R1 REFERENCED SURVEY
- PROPOSED ALIGNMENT
- - - - - TEMPORARY CONSTRUCTION EASEMENT
- - - - - TEMPORARY WORK AREA

REFERENCE SURVEYS:

- 1) BLM DEPENDENT RESURVEY NO. 6844 - SEPT. 2, 1998
- 2) BLM DEPENDENT RESURVEY NO. 5889 - JUNE 16, 1983
- 3) PARTITION PLAT NO. 1997-0130 - NOV. 19, 1997

REGISTERED PROFESSIONAL LAND SURVEYOR
 Douglas A. Popham
 OREGON
 JULY 14, 1998
 DOUGLAS A. POPHAM
 2877
 Expires 12-31-2016

CERTIFIED
 FEDERAL SURVEYOR
 1245
 Expires June 5, 2017

Primm Land Surveying, Inc.
 1340 NE 4th Street, Hermiston, OR 97838
 TEL (541) 564-7887 FAX (541) 567-8020

REGISTERED PROFESSIONAL LAND SURVEYOR
 Michael W. Erickson
 OREGON
 JULY 28, 1989
 MICHAEL W. ERICKSON
 6240
 Expires 12-31-2015

REGISTERED PROFESSIONAL LAND SURVEYOR
 James M. Klein
 OREGON
 JULY 12, 2009
 JAMES M. KLEIN
 59002
 Expires 6-30-2017

D THE DYER PARTNERSHIP ENGINEERS & PLANNERS, INC.
 1330 Teakwood Avenue / Coos Bay, Oregon 97420
 (541) 269-0732 / WWW.DYERPART.COM

KA Klein & Associates, Inc.
 ENGINEERING • SURVEYING • PLANNING
 1411 13th Street - Hood River, OR 97031
 TEL: 541-386-3322 • FAX: 541-386-2616

PACIFIC CONNECTOR GAS PIPELINE PROJECT
 PACIFIC CONNECTOR GAS PIPELINE, LP
 SECTION 15 & 17
 RECORD OF SURVEY
 TOWNSHIP 29 SOUTH, RANGE 8 WEST, W.M.
 DOUGLAS COUNTY, OREGON

Pacific Connector
 GAS PIPELINE

DRAWN BY: GJD	DATE: 06-01-2015	ISSUED FOR BID:	SCALE: 1" = 200'
CHECKED BY:	DATE:	ISSUED FOR CONSTRUCTION:	
APPROVED BY:	DATE:	DRAWING NUMBER:	SHEET 2 OF 4