

# RECORD OF SURVEY

LOCATED IN THE SE 1/4 OF SECTION 17  
TOWNSHIP 29 SOUTH, RANGE 4 WEST, WILLAMETTE MERIDIAN  
DOUGLAS COUNTY, OREGON

FILED  
Date: 7-12-2015 By: JC  
This survey consists of:  
Map: M166-38D-RP  
Narrative:  
Corner Rep:  
DOUGLAS COUNTY  
SURVEYOR

### REFERENCES:

- R1) CORRECTIVE DEPENDENT RESURVEY, DEPENDENT RESURVEY AND SUBDIVISION OF SECTIONS, APPROVED MARCH 5, 1997. C.S. #1997A
- R2) DEPENDENT RESURVEY AND SUBDIVISION OF SECTIONS APPROVED APRIL 20, 1990. C.S. #1990
- R3) LAND PARTITION FILED AS DOCUMENT NO. 2007-0087
- R4) RECORD OF SURVEY, M 157-36

### CORNER NOTES:

(140443) SOUTHEAST 1/16 CORNER SECTION 17  
FOUND 3-1/4" BRASS DISK  
STAMPED BLM 1987

- BT REFERENCES:
- 1) FOUND 19" D. FIR WITH HEALED FACE WITH TAG DATED 12/87  
S 49-1/2' E - 19.8'
  - 2) FOUND 21" PONDEROSA PINE WITH HEALED FACE WITH TAG DATED 12/87  
N 2-1/4' W - 7.9'

(141933) SOUTHEAST CORNER SECTION 17  
FOUND 3-1/4" BRASS DISK  
STAMPED BLM 1969

- BT REFERENCES:
- 1) FOUND 13" OAK WITH HEALED FACE AND TAG DATED 4/63  
N 35' E - 37.7'
  - 2) FOUND 41" FIR WITH HEALED FACE AND TAG DATED 6/57  
S 67' E - 21.0'

FOUND 1-1/4" IRON PIPE  
N 20° W, 0.35'

NOTE: NO TREES AVAILABLE  
IN SECTIONS 17 AND 20.

(140452) EAST 1/16 CORNER SECTION 17  
FOUND BRASS DISK  
STAMPED BLM 1987

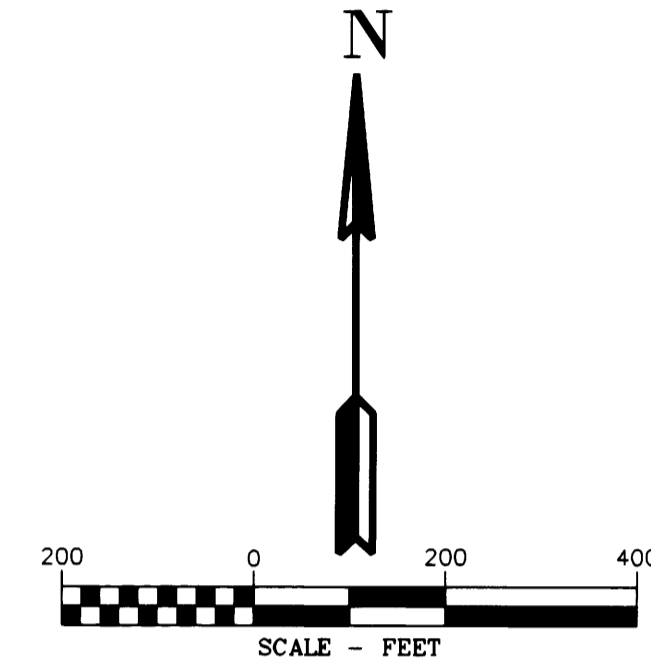
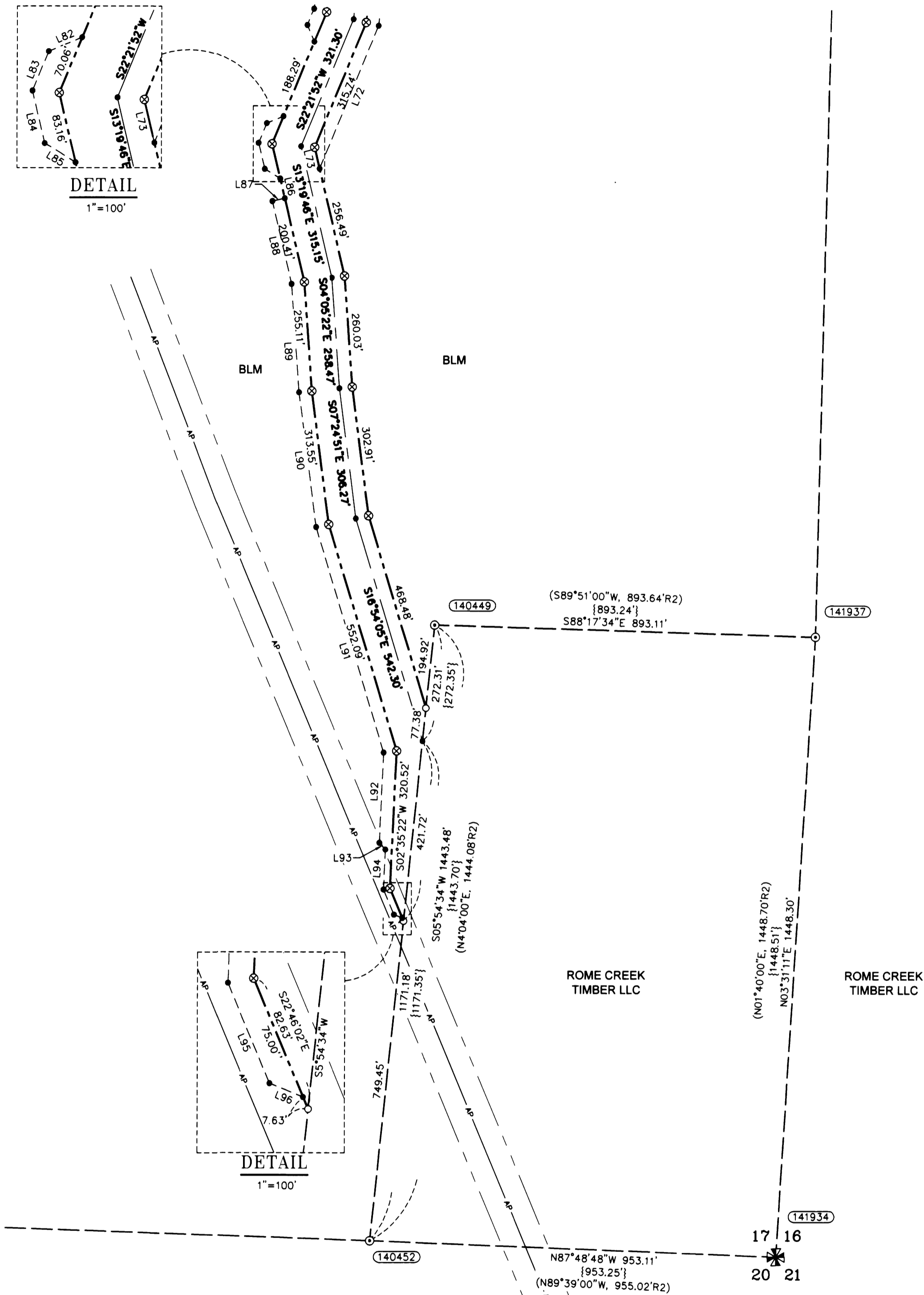
- BT REFERENCES:
- 1) FOUND 13.5" CEDAR WITH HEALED FACE WITH TAG DATED 12/87  
N 46°30' E - 6.4'
  - 2) FOUND 23" FIR WITH HEALED FACE WITH TAG DATED 12/87  
N 07° W - 24.5'

(141937) SOUTH 1/16 CORNER SECTION 17 ONLY  
FOUND 3-1/4" BRASS CAP  
STAMPED BLM 1987

- BT REFERENCES:
- 1) FOUND 14" CEDAR WITH HEALED FACE AND TAG DATED '87  
S 64° W - 10.2'
  - 2) FOUND 22" FIR WITH HEALED FACE AND TAG DATED '87  
N 38° W - 39.6'

### LEGEND

- SET 5/8" X 24" REBAR WITH 1 1/4" YELLOW PLASTIC CAP (KLEIN & ASSOC. LS 59002)
- ⊗ SET 5/8" X 24" REBAR WITH 1 1/4" YELLOW PLASTIC CAP (DYER PARTNER LS 2340)
- ⊙ FOUND MONUMENT AS NOTED (SEE CORNER NOTES)
- COMPUTED POINT, NOT MONUMENTED
- ⊠ FOUND QUARTER CORNER  
SEE CORNER NOTES
- ⊠ FOUND SECTION CORNER  
SEE CORNER NOTES
- ⊠ QUARTER CORNER NOT SEARCHED  
SHOWN FOR REFERENCE ONLY
- ⊠ SECTION CORNER NOT SEARCHED  
SHOWN FOR REFERENCE ONLY
- ① POINT NUMBER
- {xxx.xx'} GROUND DISTANCE
- (xxx.xx') RECORD DISTANCE PER REFERENCED SURVEY
- R1 REFERENCED SURVEY
- PROPOSED ALIGNMENT
- TEMPORARY CONSTRUCTION EASEMENT
- TEMPORARY WORK AREA
- POWER TRANSMISSION LINE



### LINE TABLE

Line #	Direction	Length
L72	S22°21'52"W	361.60'
L73	S13°19'46"E	51.42'
L82	S67°21'52"W	42.43'
L83	S22°21'52"W	49.72'
L84	S13°19'46"E	62.81'
L85	S58°18'32"E	42.44'
L86	S13°19'46"E	47.25'
L87	S76°40'46"W	30.00'
L88	S13°19'46"E	197.99'
L89	S04°05'22"E	253.55'
L90	S07°24'51"E	316.91'
L91	S16°54'05"E	549.42'
L92	S02°35'22"W	210.36'
L93	S42°24'38"E	21.21'
L94	S02°35'22"W	93.38'
L95	S22°46'02"E	63.38'
L96	S67°46'02"E	21.21'

REGISTERED PROFESSIONAL LAND SURVEYOR  
Douglas A. Popham  
OREGON  
JULY 14, 1968  
DOUGLAS A. POPHAM  
2877  
Expires 12-31-2016

CERTIFIED FEDERAL SURVEYOR  
1245  
Expires June 5, 2017

REGISTERED PROFESSIONAL LAND SURVEYOR  
Michael W. Erickson  
OREGON  
JULY 26, 1968  
MICHAEL W. ERICKSON  
2340  
Expires 12-31-2015

REGISTERED PROFESSIONAL LAND SURVEYOR  
James M. Klein  
OREGON  
JULY 12, 2005  
JAMES M. KLEIN  
59002  
Expires 6-30-2017

Primm Land Surveying, Inc.  
1340 NE 4th Street, Hermiston, OR 97838  
TEL (541) 564-7887 FAX (541) 567-8020

**D** THE DYER PARTNERSHIP ENGINEERS & PLANNERS, INC.  
1330 Teakwood Avenue / Coos Bay, Oregon 97420  
(541) 269-0732 / WWW.DYERPART.COM

**KA** Klein & Associates, Inc.  
ENGINEERING • SURVEYING • PLANNING  
1411 13th Street • Hood River, OR 97031  
TEL: 541-386-3322 • FAX: 541-386-2515

PACIFIC CONNECTOR GAS PIPELINE PROJECT  
PACIFIC CONNECTOR GAS PIPELINE, LP  
RECORD OF SURVEY  
SECTION 17  
TOWNSHIP 29 SOUTH, RANGE 4 WEST, W.M.  
DOUGLAS COUNTY, OREGON

**Pacific Connector**  
GAS PIPELINE

DRAWN BY: LJS	DATE: 06-01-2015	ISSUED FOR BID:	SCALE: 1" = 200'
CHECKED BY:	DATE:	ISSUED FOR CONSTRUCTION:	
APPROVED BY:	DATE:	DRAWING NUMBER:	SHEET 4 OF 4