

# RECORD OF SURVEY

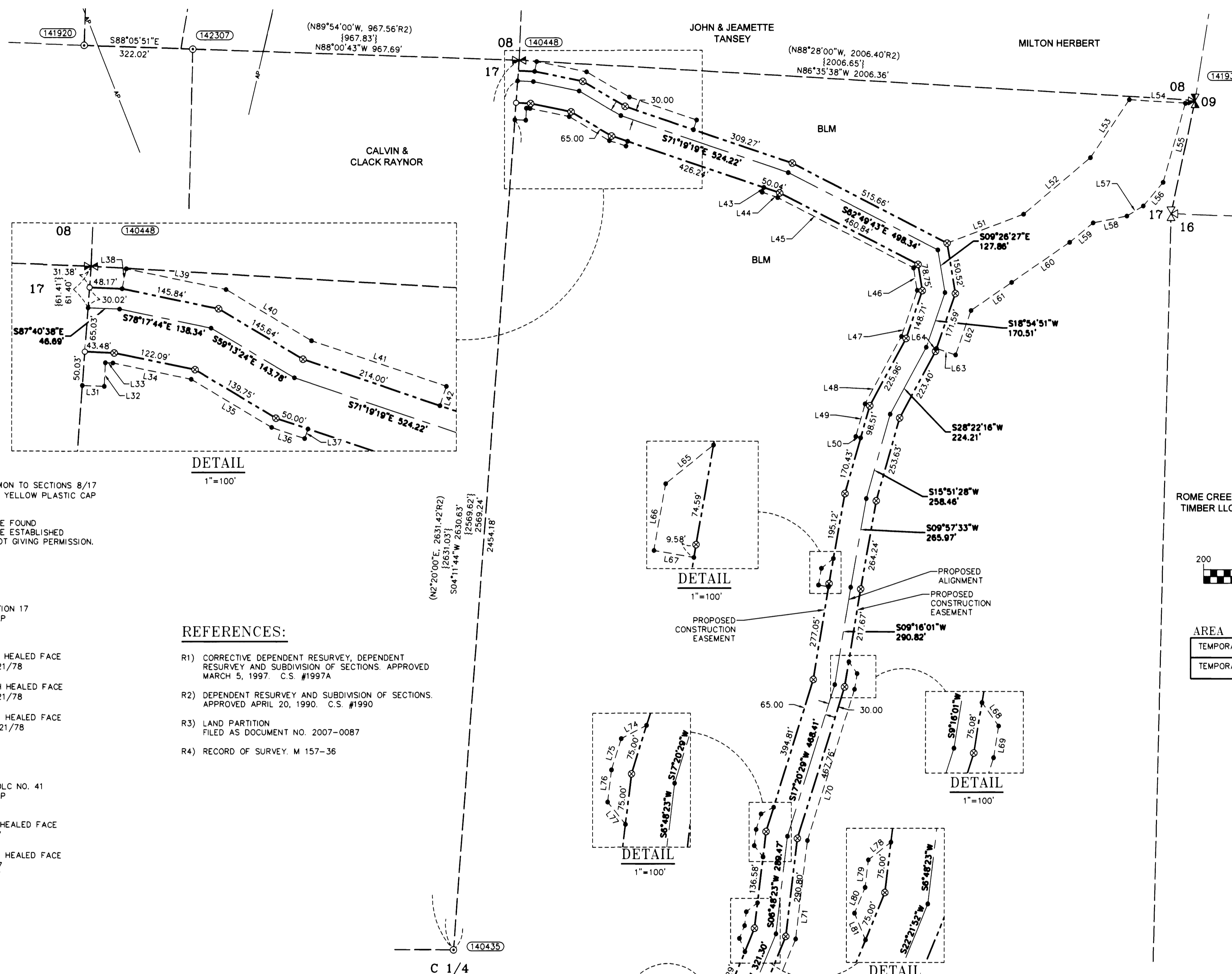
LOCATED IN THE E 1/2 OF SECTION 17  
TOWNSHIP 29 SOUTH, RANGE 4 WEST, WILLAMETTE MERIDIAN  
DOUGLAS COUNTY, OREGON

FILED  
Date: 2-12-2015 By: J.C.  
Title: Survey consists of:  
M166-38A-D  
NAME:  
COUNTY:

DOUGLAS COUNTY  
SURVEYOR

### LINE TABLE

Line #	Direction	Length
L31	S87°40'38"E	32.66'
L32	N02°19'22"E	35.00'
L33	S87°40'38"E	11.22'
L34	S78°17'44"E	118.34'
L35	S59°13'24"E	138.82'
L36	S71°19'19"E	51.59'
L37	N18°40'43"E	15.00'
L38	N11°42'16"E	30.00'
L39	S78°17'44"E	150.88'
L40	S59°13'24"E	147.50'
L41	S71°19'19"E	210.82'
L42	S18°40'41"W	30.00'
L43	S18°40'40"W	15.00'
L44	S71°19'19"E	48.93'
L45	S62°49'43"E	452.18'
L46	S09°26'27"E	67.42'
L47	S18°54'51"W	143.68'
L48	S28°22'16"W	226.37'
L49	S15°51'28"W	100.15'
L50	S74°08'32"E	15.00'
L51	N69°27'46"E	242.31'
L52	N49°52'26"E	258.80'
L53	N33°56'37"E	206.10'
L54	S86°39'38"E	166.41'
L55	S15°43'55"W	243.12'
L56	S40°19'45"W	91.02'
L57	S58°14'08"W	56.63'
L58	S78°38'01"W	101.97'
L59	S50°37'46"W	90.00'
L60	S55°27'36"W	208.73'
L61	S55°27'07"W	146.59'
L62	S18°54'51"W	138.78'
L63	N71°05'09"W	60.00'
L64	S18°54'51"W	8.98'
L65	S51°09'59"W	45.54'
L66	S09°57'33"W	49.95'
L67	S80°07'08"E	30.12'
L68	S35°40'59"E	42.46'
L69	S09°16'01"W	47.15'
L70	S17°20'29"W	467.11'
L71	S06°48'23"W	292.13'
L72	S22°21'52"W	361.60'
L73	S13°19'46"E	51.42'
L74	S62°20'29"W	42.43'
L75	S17°20'29"W	47.77'
L76	S06°48'23"W	47.77'
L77	S38°11'37"E	42.43'
L78	S51°48'23"W	42.43'
L79	S06°48'23"W	40.90'
L80	S22°21'52"W	40.90'
L81	S22°38'08"E	42.43'
L82	S67°21'52"W	42.43'
L83	S22°21'52"W	49.72'
L84	S13°19'46"E	62.81'
L85	S58°18'32"E	42.44'
L86	S13°19'46"E	47.25'
L87	S76°40'46"W	30.00'
L88	S13°19'46"E	197.99'



### CORNER NOTES:

**(141920)**  
CENTER 1/4 CORNER SECTION 17  
FOUND 3-1/4" BRASS CAP  
STAMPED BLM 1987  
BT REFERENCES:  
1) FOUND 14" FIR WITH HEALED FACE  
AND TAG DATED '87  
S 41° W - 58.7'  
2) FOUND 18" CEDAR WITH HEALED FACE  
AND TAG DATED '87  
N 89-3/4° W - 58.7'

**(141933)**  
WEST 1/16 CORNER COMMON TO SECTIONS 8/17  
FOUND 5/8" REBAR WITH YELLOW PLASTIC CAP  
STAMPED LS 1076  
NO BEARING TREES WHERE FOUND  
NO BEARING TREES WHERE ESTABLISHED  
DUE TO LAND OWNERS NOT GIVING PERMISSION.

**(140448)**  
1/4 CORNER COMMON TO SECTIONS 8/17  
FOUND 2.5" BRASS DISK  
STAMPED COUNTY SURVEYORS OFFICE, 1954  
BT REFERENCES:  
1) FOUND 36" PINE SNAG WITH VISIBLE SCRIBING  
AND TAG DATED 10/87  
S 49° E - 30.4'  
2) FOUND 34" FIR WITH HEALED FACE  
AND TAG DATED 3/21/78  
S 33° W - 21.1'  
3) FOUND 18" FIR WITH HEALED FACE  
AND TAG DATED 3/21/78  
N 05° W - 4.9'

**(141933)**  
NORTHEAST CORNER SECTION 17  
FOUND 3-1/4" BRASS CAP  
STAMPED BLM 1969  
CLOSING CORNER  
BT REFERENCES:  
1) FOUND 31" FIR WITH HEALED FACE  
AND TAG DATED 3/21/78  
S 16° W - 45.2'  
2) FOUND 34" FIR WITH HEALED FACE  
AND TAG DATED 3/21/78  
S 33° W - 21.1'  
3) FOUND 18" FIR WITH HEALED FACE  
AND TAG DATED 3/21/78  
N 05° W - 4.9'

**(142307)**  
NORTHEAST CORNER OF DLC NO. 41  
FOUND 3-1/4" BRASS CAP  
STAMPED BLM 1987  
BT REFERENCES:  
1) FOUND 5" FIR WITH HEALED FACE  
WITH TAG DATED '87  
S 6°30' E - 7.6'  
2) FOUND 12" FIR WITH HEALED FACE  
WITH TAG DATED '87  
S 46°30' W - 18.15'

### REFERENCES:

- R1) CORRECTIVE DEPENDENT RESURVEY, DEPENDENT RESURVEY AND SUBDIVISION OF SECTIONS. APPROVED MARCH 5, 1997. C.S. #1997A
- R2) DEPENDENT RESURVEY AND SUBDIVISION OF SECTIONS. APPROVED APRIL 20, 1990. C.S. #1990
- R3) LAND PARTITION FILED AS DOCUMENT NO. 2007-0087
- R4) RECORD OF SURVEY, M 157-36

### LEGEND

- SET 5/8" X 24" REBAR WITH 1 1/4" YELLOW PLASTIC CAP (KLEIN & ASSOC. LS 59002)
- ⊗ SET 5/8" X 24" REBAR WITH 1 1/4" YELLOW PLASTIC CAP (DYER PARTNER LS 2340)
- FOUND MONUMENT AS NOTED (SEE CORNER NOTES)
- COMPUTED POINT, NOT MONUMENTED
- ⊠ FOUND QUARTER CORNER SEE CORNER NOTES
- ⊞ FOUND SECTION CORNER SEE CORNER NOTES
- ⊞ QUARTER CORNER NOT SEARCHED SHOWN FOR REFERENCE ONLY
- ⊞ SECTION CORNER NOT SEARCHED SHOWN FOR REFERENCE ONLY
- POINT NUMBER
- {xxx.xx'} GROUND DISTANCE
- {xxx.xx'} RECORD DISTANCE PER REFERENCED SURVEY
- RI REFERENCED SURVEY
- PROPOSED ALIGNMENT
- - - - - TEMPORARY CONSTRUCTION EASEMENT
- - - - - TEMPORARY WORK AREA
- AP POWER TRANSMISSION LINE

REGISTERED PROFESSIONAL LAND SURVEYOR  
Douglas A. Popham  
OREGON  
JULY 14, 1998  
DOUGLAS A. POPHAM  
2877  
Expires 12-31-2016

CERTIFIED  
FEDERAL SURVEYOR  
1245  
Expires June 5, 2017

Primm Land Surveying, Inc.  
1340 NE 4th Street, Hermiston, OR 97838  
TEL (541) 564-7887 FAX (541) 567-8020

REGISTERED PROFESSIONAL LAND SURVEYOR  
Michael W. Erickson  
OREGON  
JULY 28, 1988  
MICHAEL W. ERICKSON  
2340  
Expires 12-31-2015

REGISTERED PROFESSIONAL LAND SURVEYOR  
James M. Klein  
OREGON  
JULY 12, 2005  
JAMES M. KLEIN  
59002  
Expires 6-30-2017

**D** THE DYER PARTNERSHIP ENGINEERS & PLANNERS, INC.  
1330 Teakwood Avenue / Coos Bay, Oregon 97420  
(541) 269-0732 / WWW.DYERPART.COM

**KA** Klein & Associates, Inc.  
ENGINEERING • SURVEYING • PLANNING  
1411 13th Street • Hood River, OR 97031  
TEL: 541-386-3322 • FAX: 541-386-2615

PACIFIC CONNECTOR GAS PIPELINE PROJECT  
PACIFIC CONNECTOR GAS PIPELINE, LP  
RECORD OF SURVEY  
SECTION 17  
TOWNSHIP 29 SOUTH, RANGE 4 WEST, W.M.  
DOUGLAS COUNTY, OREGON

DRAWN BY: LJS DATE: 06-01-2015 ISSUED FOR BID: SCALE: 1" = 200'  
CHECKED BY: DATE: ISSUED FOR CONSTRUCTION:  
APPROVED BY: DATE: DRAWING NUMBER: SHEET 3 OF 4