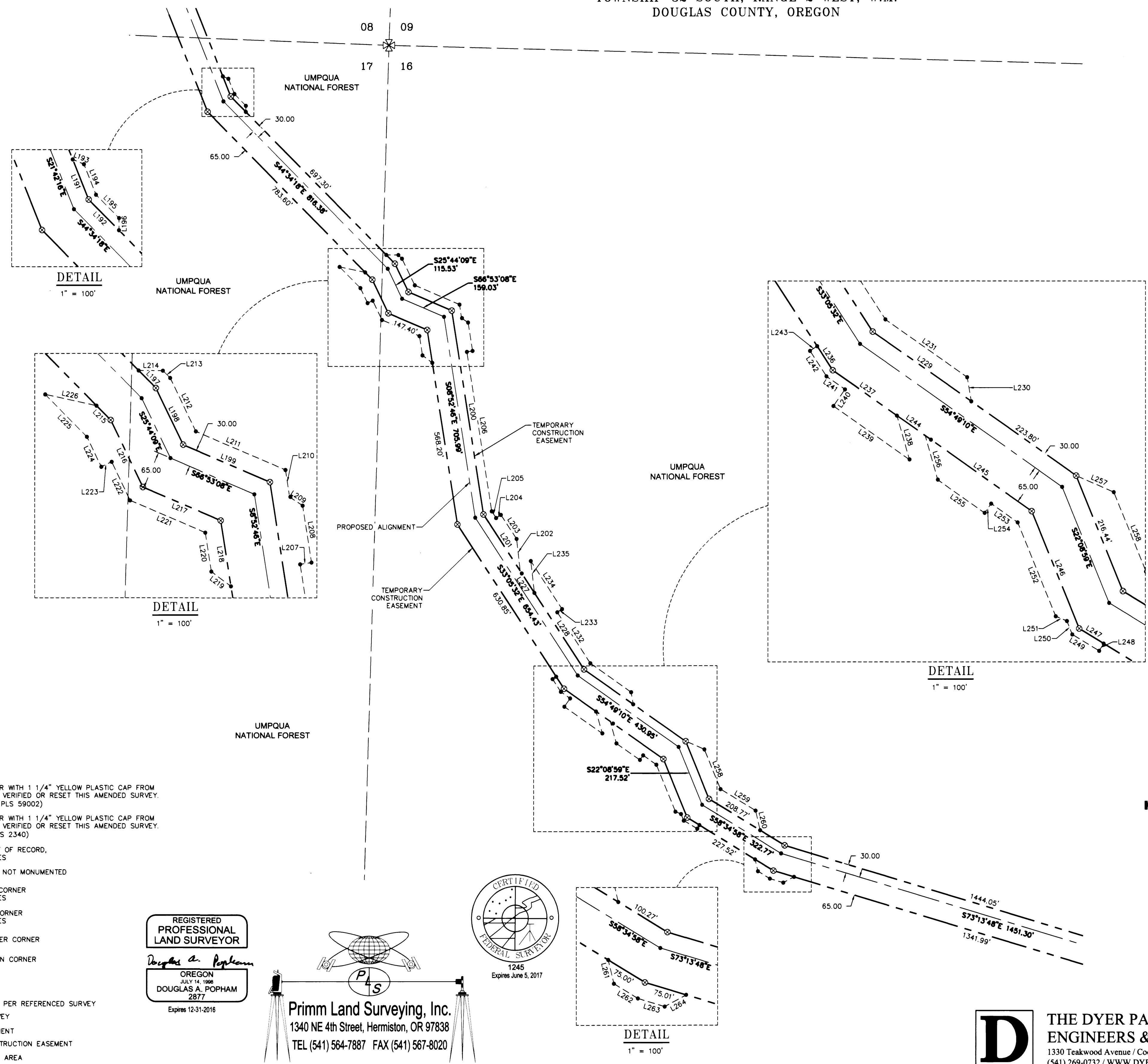
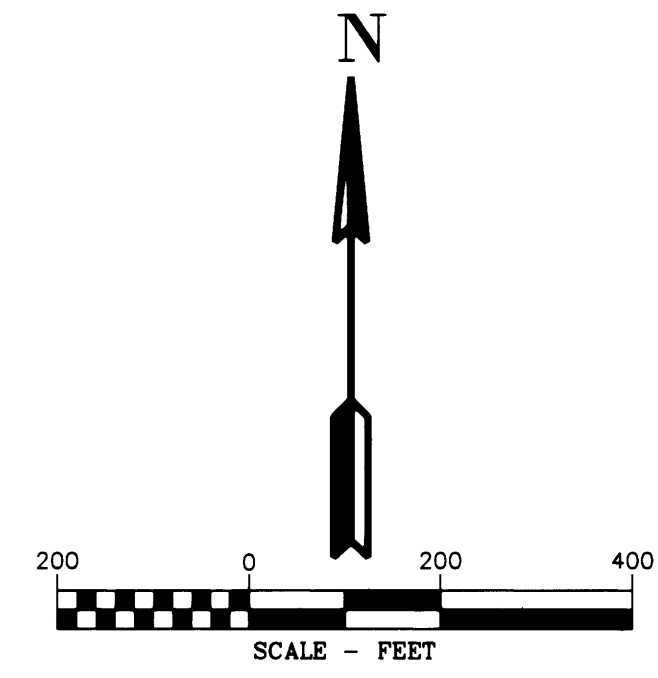


AMENDED RECORD OF SURVEY

(SURVEY M166-25)
LOCATED IN
THE NE 1/4 OF SECTION 17
AND
THE NW 1/4, THE SW 1/4 AND THE SE 1/4 OF SECTION 16
TOWNSHIP 32 SOUTH, RANGE 2 WEST, W.M.
DOUGLAS COUNTY, OREGON

FILED
Date: 7-13-2015, By: JC
This survey consists of:
Map: M166-35 A-H
No. of Acres: _____
Corner: Right
DOUGLAS COUNTY
SURVEYOR



LINE TABLE

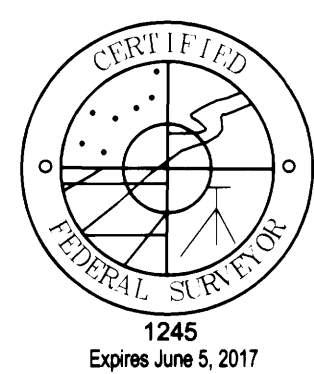
Line #	Direction	Length	Line #	Direction	Length
L191	S21°42'16"E	75.00'	L226	N77°42'08"W	91.48'
L192	S44°34'18"E	75.00'	L227	S33°05'32"E	90.96'
L193	S66°42'16"E	21.21'	L228	S33°05'32"E	316.93'
L194	S21°42'16"E	56.97'	L229	S54°49'10"E	210.18'
L195	S44°34'18"E	56.97'	L230	S9°51'04"E	42.45'
L196	S0°25'42"W	21.21'	L231	S54°49'10"E	174.39'
L197	S44°34'18"E	42.99'	L232	S33°05'32"E	211.17'
L198	S25°44'09"E	109.24'	L233	S56°54'25"W	20.00'
L199	S66°53'08"E	164.41'	L234	S33°05'32"E	200.00'
L200	N8°52'46"W	716.19'	L235	N6°31'41"W	111.81'
L201	N33°05'32"W	234.34'	L236	S33°05'32"E	50.00'
L202	S6°31'41"E	111.81'	L237	S54°49'10"E	136.67'
L203	S33°05'32"E	100.00'	L238	N15°54'37"W	79.61'
L204	N56°54'28"E	20.00'	L239	S54°49'10"E	161.95'
L205	S33°05'32"E	27.90'	L240	S35°10'50"W	35.00'
L206	S8°52'46"E	560.53'	L241	S54°49'10"E	39.55'
L207	S81°07'14"W	20.00'	L242	S33°05'32"E	52.88'
L208	S8°52'46"E	100.00'	L243	S56°54'28"W	15.00'
L209	S56°16'14"E	27.17'	L244	S54°49'10"E	60.40'
L210	S8°52'45"E	47.46'	L245	S54°49'10"E	227.30'
L211	S66°53'08"E	169.78'	L246	S22°08'59"E	219.87'
L212	S25°44'09"E	102.96'	L247	S58°34'58"E	50.00'
L213	S44°34'18"E	17.96'	L248	S31°25'02"W	15.00'
L214	S89°34'18"E	42.43'	L249	N58°34'58"W	54.94'
L215	S44°34'18"E	35.15'	L250	S22°08'58"E	24.95'
L216	S25°44'09"E	129.14'	L251	S67°09'00"E	21.21'
L217	S66°53'08"E	147.40'	L252	S22°08'59"E	176.06'
L218	S8°52'46"E	115.70'	L253	S54°49'10"E	56.56'
L219	S53°11'05"E	42.95'	L254	N35°10'50"E	20.00'
L220	S8°52'46"E	68.33'	L255	S54°49'10"E	100.00'
L221	S66°53'08"E	142.03'	L256	S15°54'37"E	79.61'
L222	S25°44'09"E	74.32'	L257	S66°29'50"E	71.53'
L223	N64°15'51"E	20.00'	L258	S22°08'59"E	148.84'
L224	S25°44'09"E	57.79'	L259	S58°34'58"E	143.14'
L225	S44°34'18"E	103.47'	L260	S13°06'16"E	70.13'
L226	N77°42'08"W	91.48'	L261	S13°34'58"E	42.43'
			L262	S58°34'58"E	48.86'
			L263	S73°14'03"E	48.86'
			L264	N61°46'19"E	42.43'

LEGEND

- 5/8" X 24" REBAR WITH 1 1/4" YELLOW PLASTIC CAP FROM SURVEY M166-25 VERIFIED OR RESET THIS AMENDED SURVEY. (KLEIN & ASSOC. PLS 59002)
- ⊗ 5/8" X 24" REBAR WITH 1 1/4" YELLOW PLASTIC CAP FROM SURVEY M166-25 VERIFIED OR RESET THIS AMENDED SURVEY. (DYER PARTNER LS 2340)
- FOUND MONUMENT OF RECORD, SEE CORNER NOTES
- COMPUTED POINT, NOT MONUMENTED
- ⊠ FOUND QUARTER CORNER SEE CORNER NOTES
- ⊞ FOUND SECTION CORNER SEE CORNER NOTES
- ⊠ COMPUTED QUARTER CORNER
- ⊞ COMPUTED SECTION CORNER
- ① POINT NUMBER
- {XXX.XX'} GROUND DISTANCE
- {XXX.XX'} RECORD DISTANCE PER REFERENCED SURVEY
- R1 REFERENCED SURVEY
- PROPOSED ALIGNMENT
- - - - - TEMPORARY CONSTRUCTION EASEMENT
- - - - - TEMPORARY WORK AREA

REGISTERED PROFESSIONAL LAND SURVEYOR
OREGON
JULY 14, 1988
DOUGLAS A. POPHAM
2877
Expires 12-31-2016

Primm Land Surveying, Inc.
1340 NE 4th Street, Hermiston, OR 97838
TEL (541) 564-7887 FAX (541) 567-8020



REGISTERED PROFESSIONAL LAND SURVEYOR
OREGON
JULY 12, 2005
JAMES M. KLEIN
59002
Expires 6-30-2015

KA
Klein & Associates, Inc.
ENGINEERING • SURVEYING • PLANNING
1411 13th Street • Hood River, OR 97031
TEL: 541-386-3322 • FAX: 541-386-2515

REGISTERED PROFESSIONAL LAND SURVEYOR
OREGON
JULY 28, 1988
MICHAEL W. ERICKSSON
2340
Expires 12-31-2015

D THE DYER PARTNERSHIP
ENGINEERS & PLANNERS, INC.
1330 Teakwood Avenue / Coos Bay, Oregon 97420
(541) 269-0732 / WWW.DYERPART.COM

PACIFIC CONNECTOR GAS PIPELINE PROJECT
PACIFIC CONNECTOR GAS PIPELINE, LP
RECORD OF SURVEY
SECTION 17 & 16
TOWNSHIP 32 SOUTH, RANGE 2 WEST, W.M.
DOUGLAS COUNTY OREGON

DRAWN BY: LJS	DATE: 04-09-2015	ISSUED FOR BID:	SCALE: 1" = 200'
CHECKED BY:	DATE:	ISSUED FOR CONSTRUCTION:	
APPROVED BY:	DATE:	DRAWING NUMBER:	SHEET 6 OF 8