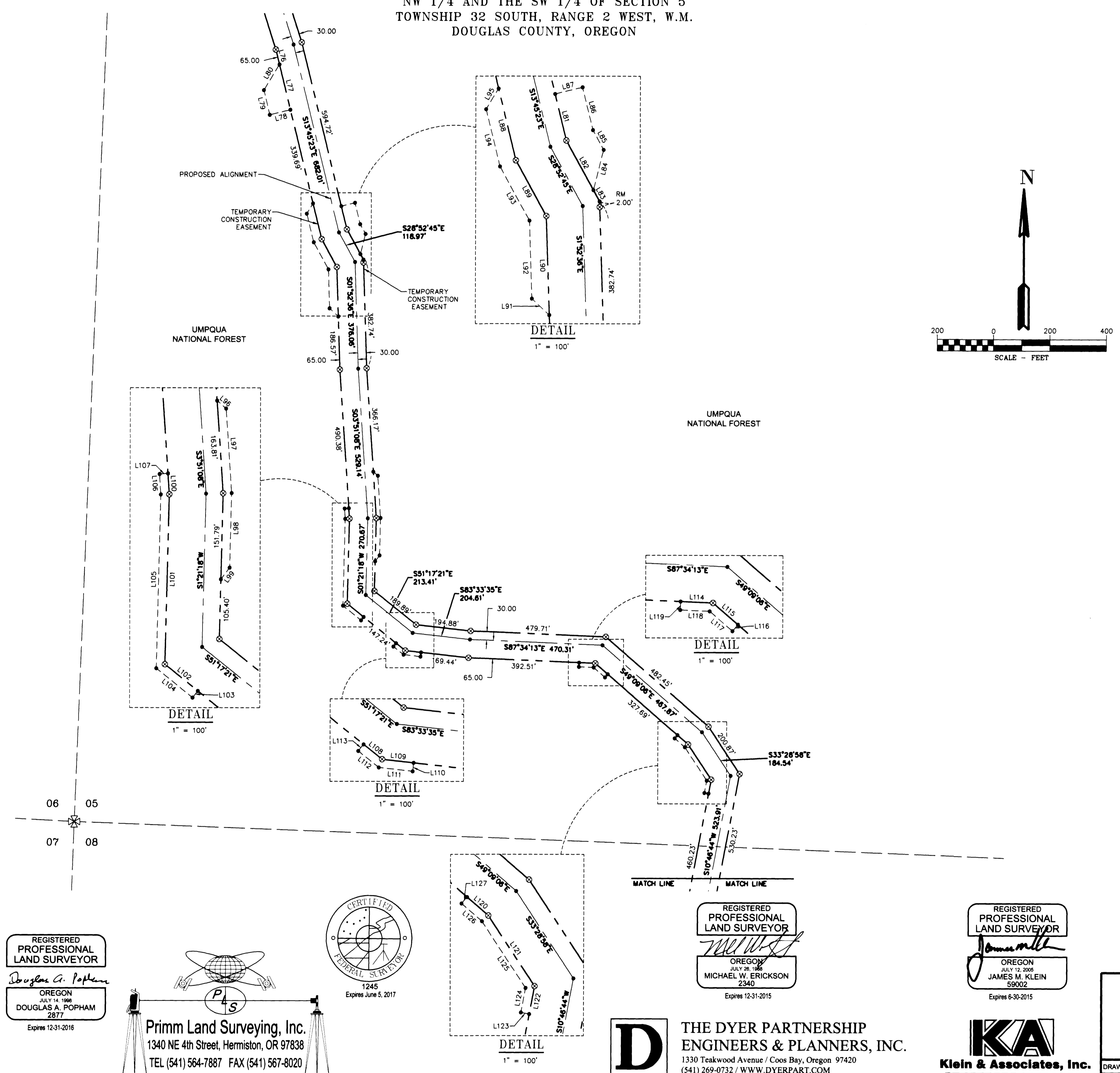


AMENDED RECORD OF SURVEY

(SURVEY M166-25)
 LOCATED IN THE
 NW 1/4 AND THE SW 1/4 OF SECTION 5
 TOWNSHIP 32 SOUTH, RANGE 2 WEST, W.M.
 DOUGLAS COUNTY, OREGON

FILED
 Date: 7-13-2015 By: JC
 This survey consists of:
 Map: M166-35 A-H
 Number:
 Containing:
DOUGLAS COUNTY
SURVEYOR



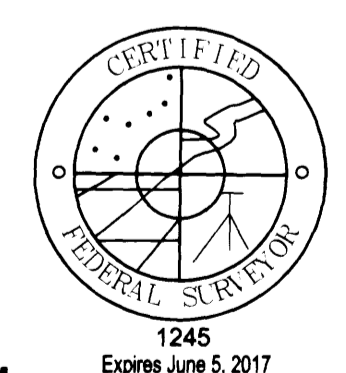
| Line # | Direction | Length |
|--------|-------------|---------|
| L76 | S13°45'23"E | 54.21' |
| L77 | S13°45'23"E | 164.49' |
| L78 | N76°14'37"E | 75.00' |
| L79 | S13°45'23"E | 89.49' |
| L80 | S31°14'37"W | 106.07' |
| L81 | S13°45'23"E | 84.36' |
| L82 | S28°52'45"E | 99.67' |
| L83 | S28°52'45"E | 22.53' |
| L84 | N14°11'15"E | 73.22' |
| L85 | S28°52'45"E | 39.53' |
| L86 | N13°45'23"W | 77.72' |
| L87 | S76°14'37"W | 50.00' |
| L88 | S13°45'23"E | 130.00' |
| L89 | N28°52'45"W | 111.99' |
| L90 | S1°52'36"E | 175.00' |
| L91 | S46°52'36"E | 42.43' |
| L92 | S1°52'36"E | 137.80' |
| L93 | S28°52'45"E | 108.77' |
| L94 | S13°45'23"E | 103.98' |
| L95 | S31°14'37"W | 42.43' |
| L96 | S48°51'08"E | 21.21' |
| L97 | S3°51'08"E | 149.50' |
| L98 | S1°21'18"W | 131.45' |
| L99 | S36°51'42"W | 25.83' |
| L100 | S3°51'08"E | 36.93' |
| L101 | S1°21'18"W | 299.87' |
| L102 | S51°17'21"E | 75.00' |
| L103 | N38°42'39"E | 15.00' |
| L104 | S51°17'21"E | 82.42' |
| L105 | S1°21'18"W | 306.61' |
| L106 | S3°51'08"E | 36.25' |
| L107 | S86°08'52"W | 15.00' |
| L108 | S51°17'21"E | 42.13' |
| L109 | S83°33'35"E | 56.25' |
| L110 | N6°30'18"E | 15.00' |
| L111 | S83°33'35"E | 60.57' |
| L112 | S51°17'21"E | 46.47' |
| L113 | S38°42'39"W | 15.00' |
| L114 | S87°34'13"E | 57.43' |
| L115 | S49°09'06"E | 58.57' |
| L116 | N40°50'51"E | 15.00' |
| L117 | S49°09'06"E | 53.34' |
| L118 | S87°34'13"E | 52.20' |
| L119 | S2°25'53"W | 15.00' |
| L120 | S49°09'06"E | 50.02' |
| L121 | S33°28'58"E | 149.16' |
| L122 | S10°46'44"W | 50.00' |
| L123 | S79°13'16"E | 15.00' |
| L124 | S10°46'44"W | 43.90' |
| L125 | S33°28'58"E | 141.00' |
| L126 | S49°09'06"E | 47.95' |
| L127 | S40°50'53"W | 15.00' |

LEGEND

- 5/8" X 24" REBAR WITH 1 1/4" YELLOW PLASTIC CAP FROM SURVEY M166-25 VERIFIED OR RESET THIS AMENDED SURVEY (KLEIN & ASSOC. PLS 59002)
- ⊗ 5/8" X 24" REBAR WITH 1 1/4" YELLOW PLASTIC CAP FROM SURVEY M166-25 VERIFIED OR RESET THIS AMENDED SURVEY (DYER PARTNER LS 2340)
- ⊙ FOUND MONUMENT OF RECORD, SEE CORNER NOTES
- COMPUTED POINT, NOT MONUMENTED
- ⊗ FOUND QUARTER CORNER, SEE CORNER NOTES
- ⊗ FOUND SECTION CORNER, SEE CORNER NOTES
- ⊗ COMPUTED QUARTER CORNER
- ⊗ COMPUTED SECTION CORNER
- 1000000 POINT NUMBER
- {xxx.xx'} GROUND DISTANCE
- (xxx.xx') RECORD DISTANCE PER REFERENCED SURVEY
- R1 REFERENCED SURVEY
- PROPOSED ALIGNMENT
- - - - - TEMPORARY CONSTRUCTION EASEMENT
- - - - - TEMPORARY WORK AREA

REGISTERED PROFESSIONAL LAND SURVEYOR
 Douglas A. Popham
 OREGON JULY 14, 1988
 DOUGLAS A. POPHAM 2877
 Expires 12-31-2016

Primm Land Surveying, Inc.
 1340 NE 4th Street, Hermiston, OR 97838
 TEL (541) 564-7887 FAX (541) 567-8020



REGISTERED PROFESSIONAL LAND SURVEYOR
 MICHAEL W. ERICKSON
 OREGON JULY 28, 1988
 MICHAEL W. ERICKSON 2340
 Expires 12-31-2015

D THE DYER PARTNERSHIP ENGINEERS & PLANNERS, INC.
 1330 Teakwood Avenue / Coos Bay, Oregon 97420
 (541) 269-0732 / WWW.DYERPART.COM

REGISTERED PROFESSIONAL LAND SURVEYOR
 James M. Klein
 OREGON JULY 12, 2005
 JAMES M. KLEIN 59002
 Expires 6-30-2015

KA Klein & Associates, Inc.
 ENGINEERING • SURVEYING • PLANNING
 1411 13th Street • Hood River, OR 97031
 TEL. 541-386-3322 • FAX: 541-386-2515

PACIFIC CONNECTOR GAS PIPELINE PROJECT
 PACIFIC CONNECTOR GAS PIPELINE, LP
 RECORD OF SURVEY
 SECTION 05
 TOWNSHIP 32 SOUTH, RANGE 2 WEST, W.M.
 DOUGLAS COUNTY OREGON

Pacific Connector GAS PIPELINE

| | | | |
|---------------|------------------|--------------------------|------------------|
| DRAWN BY: LJS | DATE: 04-09-2015 | ISSUED FOR BID: | SCALE: 1" = 200' |
| CHECKED BY: | DATE: | ISSUED FOR CONSTRUCTION: | |
| APPROVED BY: | DATE: | DRAWING NUMBER: | SHEET 3 OF 8 |