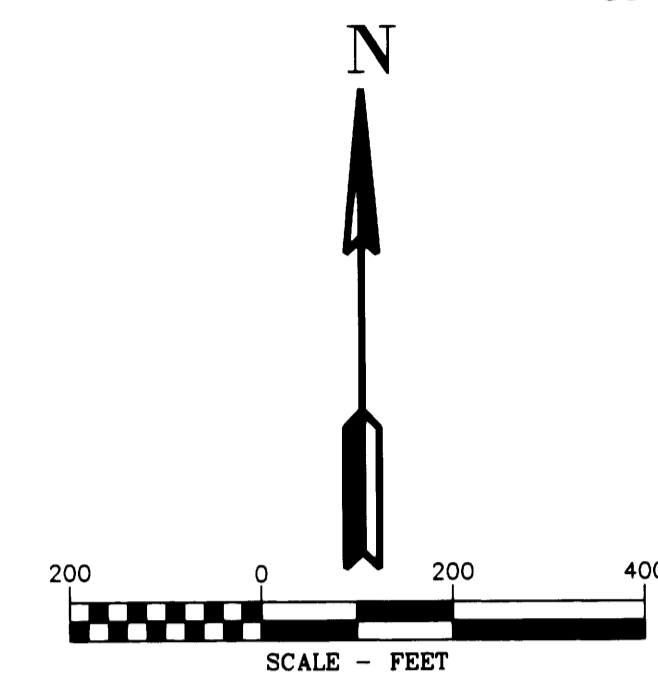


# AMENDED RECORD OF SURVEY

(SURVEY M166-25) LOCATED IN  
THE NW 1/4, THE NE 1/4 AND SE 1/4 OF SECTION 6  
AND THE SW 1/4 OF SECTION 5  
TOWNSHIP 32 SOUTH, RANGE 2 WEST, W.M.  
DOUGLAS COUNTY, OREGON

FILED  
Date: 7-13-2015 By: JC  
This survey consists of:  
Map: M166-35 A-F  
County: Douglas County  
Surveyor: Douglas County Surveyor



### CORNER NOTES:

- (142717)**  
SOUTHWEST CORNER SECTION 32 T31S-R02W  
FOUND 2-1/2" BRASS CAP  
STAMPED COUNTY SURVEYORS OFFICE 1966  
BT REFERENCES:  
1) 16" MADRONE WITH HEALED FACE  
AND TAG DATED 8/66  
N 32° W - 27.6' TO NAIL SIDE CENTER  
2) 17" MADRONE HEALED FACE  
AND TAG DATED 8/66  
N 52-1/2° W - 35.6' TO NAIL SIDE CENTER  
3) BEARING TREE PER M166-25  
15" GRAND FIR WITH BLAZED FACE  
SET TAG DATED 8/14  
N 66° E - 13.3' TO NAIL SIDE CENTER  
4) BEARING TREE PER M166-25  
10" GRAND FIR WITH BLAZED FACE  
SET TAG DATED 8/14  
S 44° E - 24.6' TO NAIL SIDE CENTER

- (148050)**  
NORTHEAST CORNER SECTION 6 T31S-R02W  
FOUND 2-1/2" BRASS CAP  
STAMPED COUNTY SURVEYORS OFFICE 1966  
BT REFERENCES:  
1) 19" D. FIR 10" STUMP WITH VISIBLE SCRIBE  
AND TAG DATED 9/66  
S 44° E - 27.1'  
2) 33" D. FIR 8" STUMP WITH VISIBLE SCRIBE  
AND TAG DATED 9/66  
S 21-1/2° W, 10.6'  
3) BEARING TREE PER M166-25  
13" FIR BLAZED FACE  
SET TAG DATED 8/14  
S 66° E - 18.6' TO NAIL SIDE CENTER  
4) BEARING TREE PER M166-25  
10" FIR BLAZED FACE  
SET TAG DATED 8/14  
S 73° W - 1.2' TO NAIL SIDE CENTER  
5) BEARING TREE PER M166-25  
15" FIR BLAZED FACE  
SET TAG DATE 8/14  
N 21° W - 17.85' TO NAIL SIDE CENTER

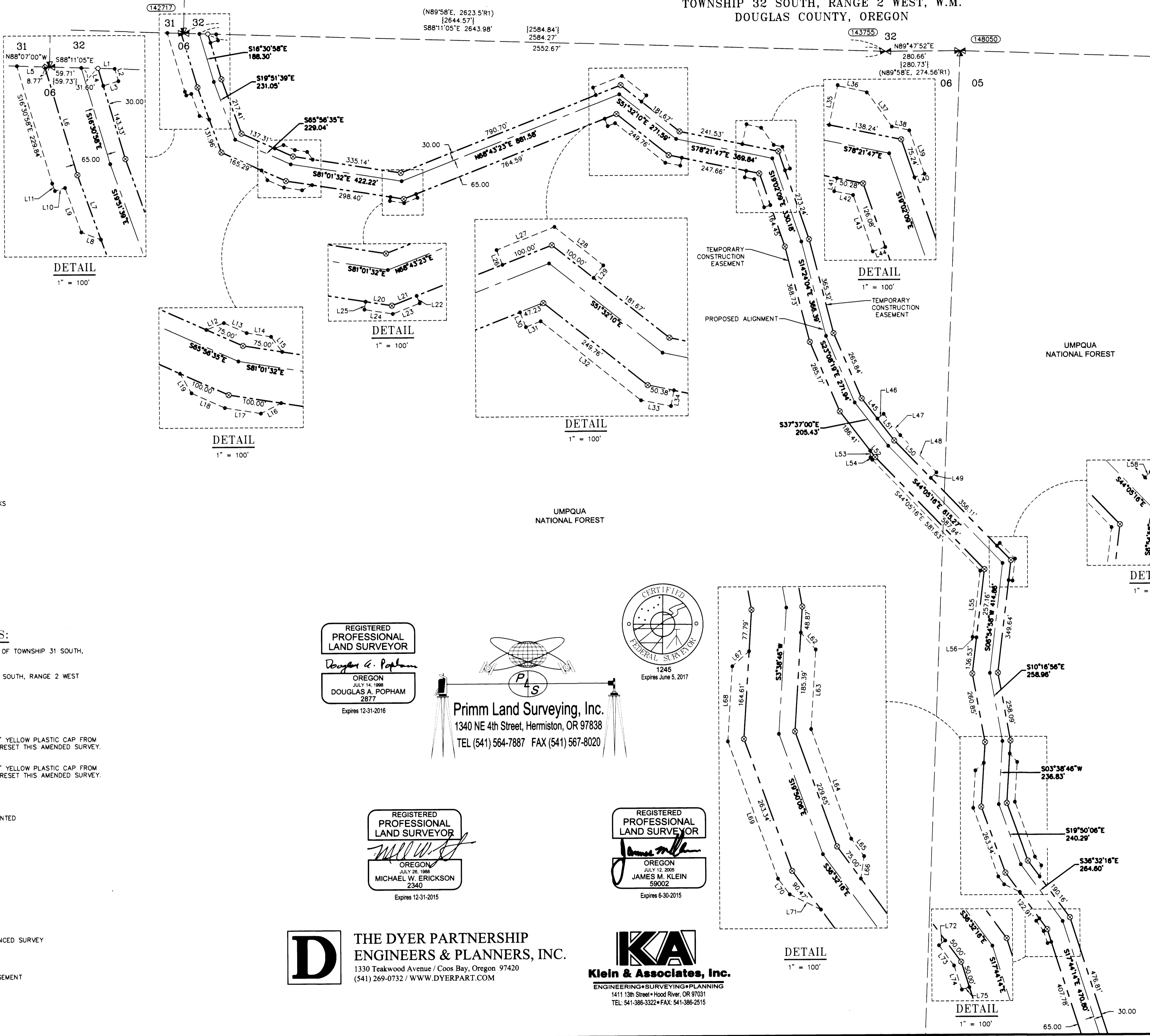
- (143755)**  
SOUTH 1/4 CORNER SECTION 32, T31S-R02W  
FOUND 2-1/2" BRASS CAP  
STAMPED COUNTY SURVEYORS OFFICE 1966  
BT REFERENCES:  
1) 30" DIA. 3" TALL STUMP WITH HACK MARKS  
N 30° W - 50.8'  
2) SET NEW BEARING TREE  
13" FIR (MARKED CS1/4 S6 BT)  
SET TAG DATED 3/15  
S 38° E - 12.95' TO NAIL SIDE CENTER  
3) SET NEW BEARING TREE  
12.5" FIR (MARKED - CS1/4 S32 BT)  
SET TAG DATED 3/15  
N 08° W - 19.1' TO NAIL SIDE CENTER

### REFERENCE SURVEYS:

- ORIGINAL GLO NOTES, SOUTH LINE OF TOWNSHIP 31 SOUTH, RANGE 2 WEST - SEPT. 26, 1908
- ORIGINAL GLO PLAT, TOWNSHIP 32 SOUTH, RANGE 2 WEST - DEC. 11, 1903
- COUNTY SURVEY NO. M166-25

### LEGEND

- 5/8" X 24" REBAR WITH 1 1/4" YELLOW PLASTIC CAP FROM SURVEY M166-25 VERIFIED OR RESET THIS AMENDED SURVEY. (KLEIN & ASSOC. PLS 59002)
- ⊙ 5/8" X 24" REBAR WITH 1 1/4" YELLOW PLASTIC CAP FROM SURVEY M166-25 VERIFIED OR RESET THIS AMENDED SURVEY. (DYER PARTNER LS 2340)
- ⊙ FOUND MONUMENT OF RECORD, SEE CORNER NOTES
- COMPUTED POINT, NOT MONUMENTED
- ⌵ FOUND QUARTER CORNER SEE CORNER NOTES
- ⊕ FOUND SECTION CORNER SEE CORNER NOTES
- ⌵ COMPUTED QUARTER CORNER
- ⊕ COMPUTED SECTION CORNER
- ① POINT NUMBER
- {XXX.XX'} GROUND DISTANCE
- (XXX.XX') RECORD DISTANCE PER REFERENCED SURVEY
- R1 REFERENCED SURVEY
- PROPOSED ALIGNMENT
- - - - - TEMPORARY CONSTRUCTION EASEMENT
- - - - - TEMPORARY WORK AREA



### LINE TABLE

Line #	Direction	Length	Line #	Direction	Length
L1	S88°11'05"E	31.60'	L38	S78°21'47"E	33.38'
L2	S16°30'58"E	24.21'	L39	S19°02'10"E	86.63'
L3	S73°29'02"W	30.00'	L40	S70°57'51"W	20.00'
L4	S16°30'58"E	34.15'	L41	S11°38'13"W	25.00'
L5	N88°07'00"W	52.69'	L42	S78°21'47"E	36.04'
L6	S16°30'58"E	211.74'	L43	S19°02'09"E	111.84'
L7	S19°51'39"E	128.63'	L44	N70°57'51"E	25.00'
L8	S69°26'38"E	39.40'	L45	S37°37'00"E	96.64'
L9	S19°51'39"E	88.47'	L46	N52°23'09"E	30.00'
L10	N73°22'07"E	20.03'	L47	S37°37'00"E	101.59'
L11	S19°51'41"E	14.95'	L48	S44°05'16"E	195.08'
L12	N69°03'25"E	35.36'	L49	S45°54'44"W	30.00'
L13	S65°56'35"E	46.69'	L50	S44°05'16"E	196.77'
L14	S81°01'32"E	46.69'	L51	S37°37'00"E	103.28'
L15	S36°01'32"E	35.36'	L52	S37°37'00"E	30.95'
L16	N63°11'51"E	42.76'	L53	S15°53'58"E	25.69'
L17	S81°01'32"E	68.62'	L54	S37°37'00"E	10.93'
L18	S65°56'35"E	68.61'	L55	S6°54'58"W	250.00'
L19	S30°10'21"E	42.77'	L56	S83°05'02"E	15.00'
L20	S81°01'32"E	50.00'	L58	S45°54'44"W	15.00'
L21	N68°43'23"E	50.00'	L59	N44°05'16"W	82.16'
L22	N21°16'37"W	15.00'	L60	N6°54'58"E	82.16'
L23	N68°43'23"E	54.05'	L61	S83°05'02"E	15.00'
L24	S81°01'32"E	54.05'	L62	N41°21'14"W	42.43'
L25	S8°58'28"W	15.00'	L63	N3°38'46"E	149.16'
L26	N21°16'37"W	30.00'	L64	N19°50'06"W	219.01'
L27	N68°43'23"E	117.23'	L65	N36°32'16"W	40.59'
L28	S51°32'10"E	117.23'	L66	N8°27'40"E	42.43'
L29	S38°27'50"W	30.00'	L67	S48°38'46"W	42.43'
L30	S21°16'35"E	30.00'	L68	S3°38'46"W	140.84'
L31	N68°43'23"E	30.00'	L69	N19°50'06"W	273.97'
L32	S51°32'10"E	239.68'	L70	S36°32'16"E	36.83'
L33	S78°21'47"E	57.89'	L71	S63°52'21"E	65.33'
L34	N10°56'51"E	30.00'	L72	S53°27'40"W	15.00'
L35	N12°21'04"E	75.01'	L73	S36°32'16"E	47.52'
L36	S78°21'47"E	56.24'	L74	S17°44'14"E	47.52'
L37	S35°24'47"E	80.72'	L75	N72°15'46"E	15.00'

REGISTERED PROFESSIONAL LAND SURVEYOR  
*Douglas A. Popham*  
OREGON  
JULY 14, 1968  
DOUGLAS A. POPHAM  
2877  
Expires 12-31-2016

Primm Land Surveying, Inc.  
1340 NE 4th Street, Hermiston, OR 97838  
TEL (541) 564-7887 FAX (541) 567-8020

REGISTERED PROFESSIONAL LAND SURVEYOR  
*Michael W. Erickson*  
OREGON  
JULY 26, 1968  
MICHAEL W. ERICKSON  
2340  
Expires 12-31-2015

REGISTERED PROFESSIONAL LAND SURVEYOR  
*James M. Klein*  
OREGON  
JULY 12, 2005  
JAMES M. KLEIN  
59002  
Expires 6-30-2015

**D** THE DYER PARTNERSHIP ENGINEERS & PLANNERS, INC.  
1330 Teakwood Avenue / Coos Bay, Oregon 97420  
(541) 269-0732 / WWW.DYERPART.COM

**KA** Klein & Associates, Inc.  
ENGINEERING • SURVEYING • PLANNING  
1411 13th Street • Hood River, OR 97031  
TEL: 541-386-3322 • FAX: 541-386-2515

PACIFIC CONNECTOR GAS PIPELINE PROJECT  
PACIFIC CONNECTOR GAS PIPELINE, LP  
RECORD OF SURVEY  
SECTIONS 05 AND 06  
TOWNSHIP 32 SOUTH, RANGE 2 WEST, W.M.  
DOUGLAS COUNTY OREGON

**Pacific Connector**  
GAS PIPELINE

DRAWN BY: LJS DATE: 04-09-2015 ISSUED FOR BID:  SCALE: 1" = 200'  
CHECKED BY: DATE: ISSUED FOR CONSTRUCTION:   
APPROVED BY: DATE: DRAWING NUMBER: SHEET 2 OF 8