

LEGEND

- SET 5/8" x 30" IRON ROD WITH 2 1/2" ALUMINUM CAP STAMPED AS SHOWN
- FOUND BRASS CAP
- △ CALCULATED POINT
- ===== LINES BLAZED, FLAGGED & POSTED
- () RECORD PER 1909 GLO PLAT
- (()) RECORD PER 1908 GLO LINENOTES

① CC FOR SEC. 5 & 6 ONLY

FOUND BRASS CAP PER 1978 U.S. FOREST SERVICE RENEWAL

FOUND BEARING OBJECTS:

45" FIR S14°W 13.2' VISIBLY HEALED "X"
10" FIR S53°E 21.8' FULLY HEALED VISIBLE SCAR

NEW BEARING OBJECTS:

7" FIR S82°E 30.4'
6" FIR S25°E 24.5'
BOTH SCRIBED "T31S R2W S5 BT"

② 1/4 CORNER-SECTION 6|5

FOUND BRASS CAP PER 1978 U.S. FOREST SERVICE RENEWAL

FOUND BEARING OBJECTS:

25" FIR S51°W 18.5' VISIBLE "X"
15" TALL ROTTEN STUMP S65°E 15.8'
VISIBLE X AND HOLLOW SCAR
19" HEMLOCK S10°E 34.1'

NEW BEARING OBJECTS:

25" FIR N33°W 16.0'
6" HEMLOCK N76°W 15.5'
BOTH SCRIBED "1/4 S6 BT"

③ SECTION CORNER-SECTION 5, 6, 7 & 8

FOUND BRASS CAP PER 1966 DCSO RENEWAL

FOUND BEARING OBJECTS:

51" DOUG. FIR N34°E 17.8' FULLY HEALED FACE
26" HEMLOCK S64°W 17.8' ROTTEN SCRIBE
23" W. FIR N11°W 19.8' FULLY HEALED FACE
15" HEMLOCK S82°E 34.9' MOSTLY HEALED FACE

④ 1/4 CORNER-SECTION 6

FOUND STONE PER 1906 GLO SURVEY & BRASS CAP PER 1977 U.S. FOREST SERVICE RENEWAL

FOUND BEARING OBJECTS:

44" FIR S70°W 11.2' HEALED FACE
30" FIR STUMP (ROTTEN) N67°W 16.0'
28" FIR S53°W 57.5' MOSTLY HEALED FACE
17" FIR N50°E 38.3' FULLY HEALED FACE

NEW BEARING OBJECT:

13" FIR N50°W 25.4' SCRIBED "1/4 S6 BT"

⑤ E SECTION CORNER-SECTION 1

FOUND BRASS CAP PER 1970 DCSO RENEWAL

FOUND BEARING OBJECTS:

15" HEMLOCK S33°W 8.5' HEALED FACE
9" TALL-11" CHINQUAPIN SNAG N55°W 15.6'
SCRIBE VISIBLE
12" CHINQUAPIN N66°E 10.4' HEALED FACE
35" FIR N24°E 50.8' HEALED FACE
31" FIR S16°E 76.0' HEALED FACE

⑥ CC FOR SEC. 6 & 7 ONLY

FOUND BRASS CAP PER 1970 DCSO RENEWAL

FOUND BEARING OBJECTS:

19" FIR N7°E 40.3' HEALED FACE
37" FIR S69°E 22.4' HEALED FACE
4' TALL - 30" CEDAR STUMP N49°E 48.8'
VISIBLE SCRIBE

NEW BEARING OBJECTS:

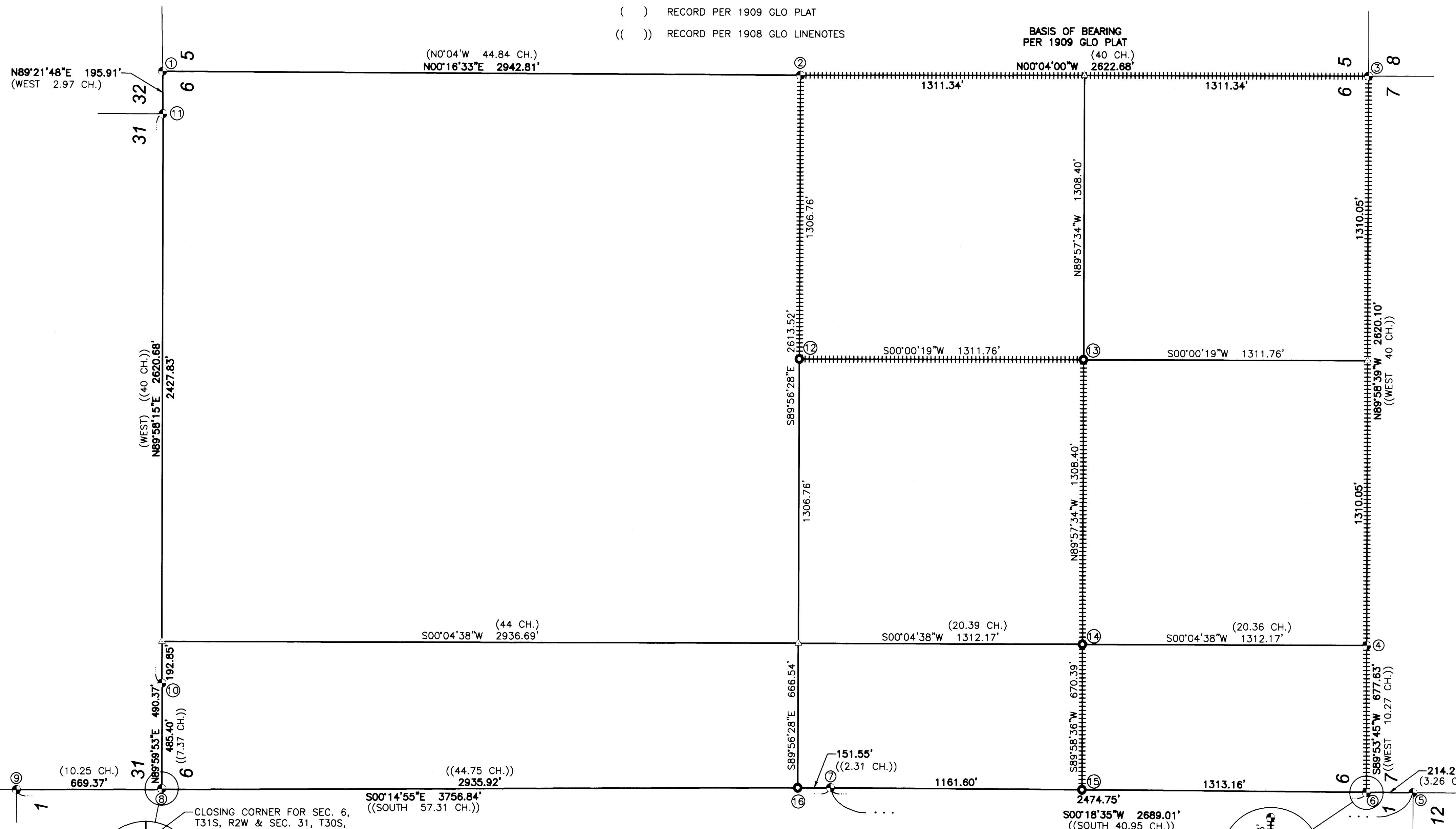
10" WHITE FIR S59°E 19.1'
SCRIBED "T31S R2W CC S7 BT"
18" DOUGLAS FIR N44°E 54.8'
SCRIBED "T31S R2W CC S6 BT"

⑦ E 1/4 CORNER-SECTION 1 ONLY

FOUND BRASS CAP PER 1970 DCSO RENEWAL

FOUND BEARING OBJECTS:

38" DOUG. FIR SNAG S50°W 17.8' NO VISIBLE SCAR
13" LAUREL N41°W 27.1' HEALED FACE
18" DOUG. FIR N12°W 52.0' HEALED FACE
19" LAUREL N87°W 17.0' OPEN SCAR, SCRIBE UN-READABLE



⑧ CC FOR SEC. 6, T31S, R2W & SEC. 31, T30S, R2W

FOUND BRASS CAP PER 1981 DCSO RENEWAL

FOUND BEARING OBJECTS:

13" FIR N10°E 21.4' HEALED FACE
11" FIR N26°E 29.8' HEALED FACE
BOTH HAVE CORRECT DISTANCE WRITTEN ON TAGS, BUT WRONG BEARINGS
9" CHINQUAPIN S89°E 26.4' HEALED FACE
FELL OVER AND LEANING ON ANOTHER TREE
11" CHINQUAPIN S16°E 11.7' HEALED FACE

⑨ NE CORNER-SECTION 1

FOUND BRASS CAP PER 1981 DCSO RENEWAL

FOUND BEARING OBJECTS:

38"x3" FIR STUMP S39°W 37.1'
(TO NAIL) HEALED FACE
24"x4" HEMLOCK STUMP N17°W 21.8'
(TO NAIL) HEALED FACE
36"x3" FIR STUMP N81°W 31.0'
(TO NAIL) HEALED FACE
14"x3" HEMLOCK STUMP S19°E 20.8'
(TO NAIL) HEALED FACE

⑩ SOUTH 1/4 CORNER-SECTION 31 ONLY

FOUND BRASS CAP PER 1981 DCSO RENEWAL

FOUND BEARING OBJECTS:

25"x3" FIR STUMP N87°E 35.4'
PARTIALLY VISIBLE SCRIBE
10" FIR STUMP UP-ROOTED AND ROTTEN
8" MADRONE S14°W 21.0' HEALED FACE
44" MADRONE S67°W 2.9'
(TO PK NAIL) HEALED FACE

⑪ SECTION CORNER-SECTION 31|32 ONLY

FOUND BRASS CAP PER 1978 FOREST SERVICE RENEWAL

FOUND BEARING OBJECTS:

45" FIR N23°E 124.7' HEALED FACE
10" FIR N20°W 15.4' HEALED FACE

NEW BEARING OBJECTS:

6" FIR N33°W 33.3'
SCRIBED "T30S R2W S31 BT"
5" FIR N75°E 28.8'
SCRIBED "T30S R2W S32 BT"

NARRATIVE:

THE PURPOSE OF THIS MAP IS TO SUBDIVIDE SECTION 6, MONUMENT CORNERS BETWEEN ROSEBURG RESOURCES & FEDERAL O&C PROPERTY AND MARK PROPERTY LINES AS SHOWN.

PROCEDURE WAS AS FOLLOWS:

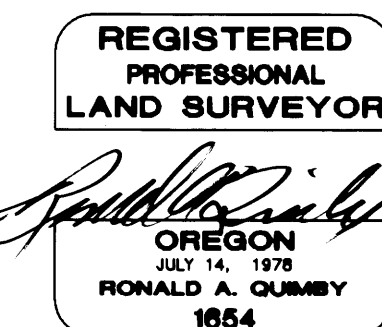
MONUMENTS OF RECORD PER DOUGLAS COUNTY SURVEYOR'S OFFICE CORNER NOTES WERE TIED AND HELD AS SHOWN. THE WEST 1/4 CORNER AND NORTH 1/4 CORNER OF SECTION 6 WERE NEVER MONUMENTED. THE WEST 1/4 CORNER WAS RE-ESTABLISHED BY PROPORTIONING, USING THE CARDINAL DIFFERENCE OF THE CLOSING CORNERS AT THE NORTHWEST & SOUTHWEST CORNERS OF SAID SECTION 6 PER GLO LOTTING INSTRUCTIONS. THE NORTH 1/4 CORNER WAS RE-ESTABLISHED BY PROPORTIONING, USING THE CARDINAL DIFFERENCE OF THE CLOSING CORNER OF SECTION 5 & 6 AND THE NORTHWEST CLOSING CORNER OF SECTION 6 PER GLO LOTTING INSTRUCTIONS. THE SECTION WAS THEN SUBDIVIDED PER THE 2009 MANUAL OF INSTRUCTIONS AND MONUMENTS SET, AS SHOWN.

FIELD CREW: NOLAN FROMDAHL, RICHARD OLSON & DAVE MANRING

EQUIPMENT: NIKON TOTAL STATION AND TDS RANGER DATA COLLECTOR

OFFICE: RON QUIMBY

DRAFTING: DEREK FEIGEL



EXPIRES: 12/31/2014

SURVEYED BY:
i.e.
ENGINEERING

809 SE Pine Street
Roseburg, Oregon 97470
PHONE (541) 673-0166
FAX (541) 440-3392
email@ieengineering.com

SURVEYED FOR:
ROSEBURG RESOURCES CO.
P.O. BOX 1088
ROSEBURG, OR 97470

DWG. BY: DAF
PM: RAQ
PAGE: 1 OF 1
JOB NO: 1851-28
DATE: DEC., 2014
SCALE: AS NOTED

0' 150 300 600
SCALE: 1" = 300'

RECORD OF SURVEY AND SUBDIVISION OF SECTION 6

LYING IN THE N.W. 1/4, THE N.E. 1/4, THE S.W. 1/4 & THE S.E. 1/4 OF SECTION 6, TOWNSHIP 31 SOUTH, RANGE 2 WEST, WILLAMETTE MERIDIAN, DOUGLAS COUNTY, OREGON