

# RECORD OF SURVEY

LOCATED IN  
THE NE 1/4 OF SECTION 21  
AND  
THE NW 1/4 OF SECTION 22  
TOWNSHIP 32 SOUTH, RANGE 2 WEST, W.M.  
DOUGLAS COUNTY, OREGON

REVISED SEE M166-35 A-H

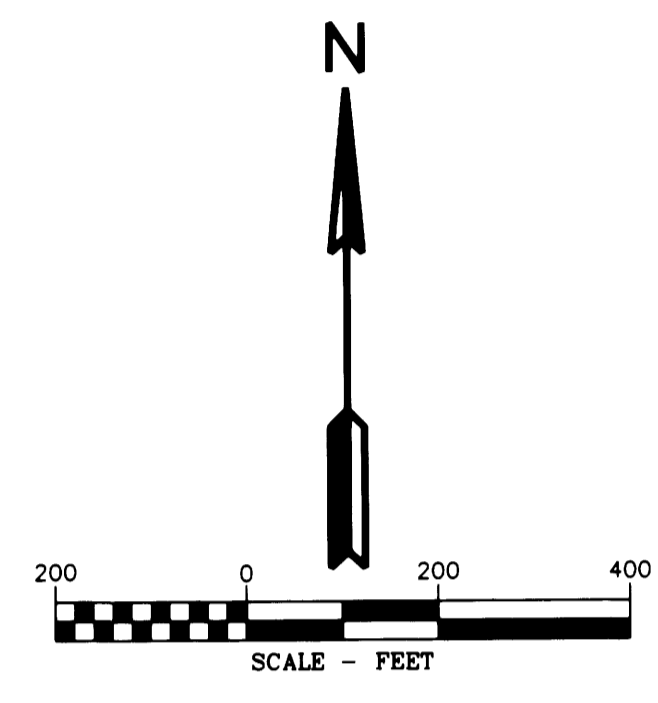
### LINE TABLE

Line #	Direction	Length
L273	S14°07'59"W	438.41
L274	N75°52'01"W	30.07
L275	S24°58'17"W	70.26
L276	S20°20'42"E	150.44
L277	N18°42'47"E	79.35
L278	N79°28'01"E	47.52
L279	S60°06'08"E	59.06
L280	S38°13'32"E	54.71
L281	S28°25'12"E	70.41
L282	S4°32'58"E	58.74
L283	S0°05'20"E	59.78
L284	S4°31'59"W	177.26
L285	N20°20'55"W	47.53
L286	N4°31'59"E	133.33
L287	N0°05'20"W	58.20
L288	N4°32'58"W	53.74
L289	N28°25'12"W	64.47
L290	N38°13'32"W	49.13
L291	N60°06'08"W	47.83
L292	S79°28'01"W	36.70
L293	N20°20'55"W	20.30
L294	S20°20'55"E	33.98
L295	S20°20'55"E	32.16
L296	S11°12'33"E	27.04
L297	N83°36'42"E	48.28
L298	N76°06'38"E	22.40
L299	N1°36'38"E	19.05
L300	N42°02'20"E	12.85
L301	N78°35'59"E	17.53
L302	S61°28'55"E	14.09
L303	S25°42'48"W	10.16
L304	S36°12'03"W	33.95
L305	S41°02'43"W	18.73
L306	S52°41'57"W	69.44
L307	S28°25'12"W	15.68
L308	S11°12'33"E	80.39
L309	S61°07'45"E	13.07
L310	S11°12'33"E	116.71
L311	S41°14'28"W	70.87
L312	S41°14'28"W	31.88
L313	S31°32'01"W	74.41
L314	S39°48'21"E	60.31
L315	S39°48'20"E	7.11
L316	N9°03'36"E	135.42
L317	S35°07'18"E	55.36
L318	S81°09'28"E	6.84
L319	N11°12'33"W	7.17
L320	N63°56'27"W	12.57
L321	N11°12'33"W	48.21
L322	N33°39'59"E	14.17
L323	S11°12'33"E	50.31
L324	S11°12'33"E	66.90
L325	S41°14'28"W	64.01
L326	S31°32'01"W	12.12
L327	S31°32'01"W	138.55
L328	N15°58'52"E	129.05
L329	N39°48'21"W	106.60
L330	N80°28'09"W	31.02
L331	N35°12'40"W	69.21
L332	N47°17'11"W	17.74
L333	N2°17'11"W	21.14
L334	S50°38'32"E	23.89
L335	N39°23'44"E	28.61
L336	S50°43'42"E	190.52
L337	S39°15'19"W	28.89
L338	S39°01'05"W	15.82
L339	S50°44'26"E	197.77
L340	N39°59'59"E	15.49

FILED  
Date: 12-4-2014 By: J.C.  
This survey consists of:  
Map... M166-25 A-H  
Manhole: \_\_\_\_\_  
Cantile Foot: \_\_\_\_\_  
DOUGLAS COUNTY  
SURVEYOR

Line #	Direction	Length
L341	S50°38'32"E	2.95
L342	N39°21'28"E	30.00
L343	S50°38'32"E	42.40

AREA SECTION 21 & 22	
TEMPORARY CONSTRUCTION EASEMENT	6.73 ACRES
TEMPORARY WORK AREA	1.02 ACRES



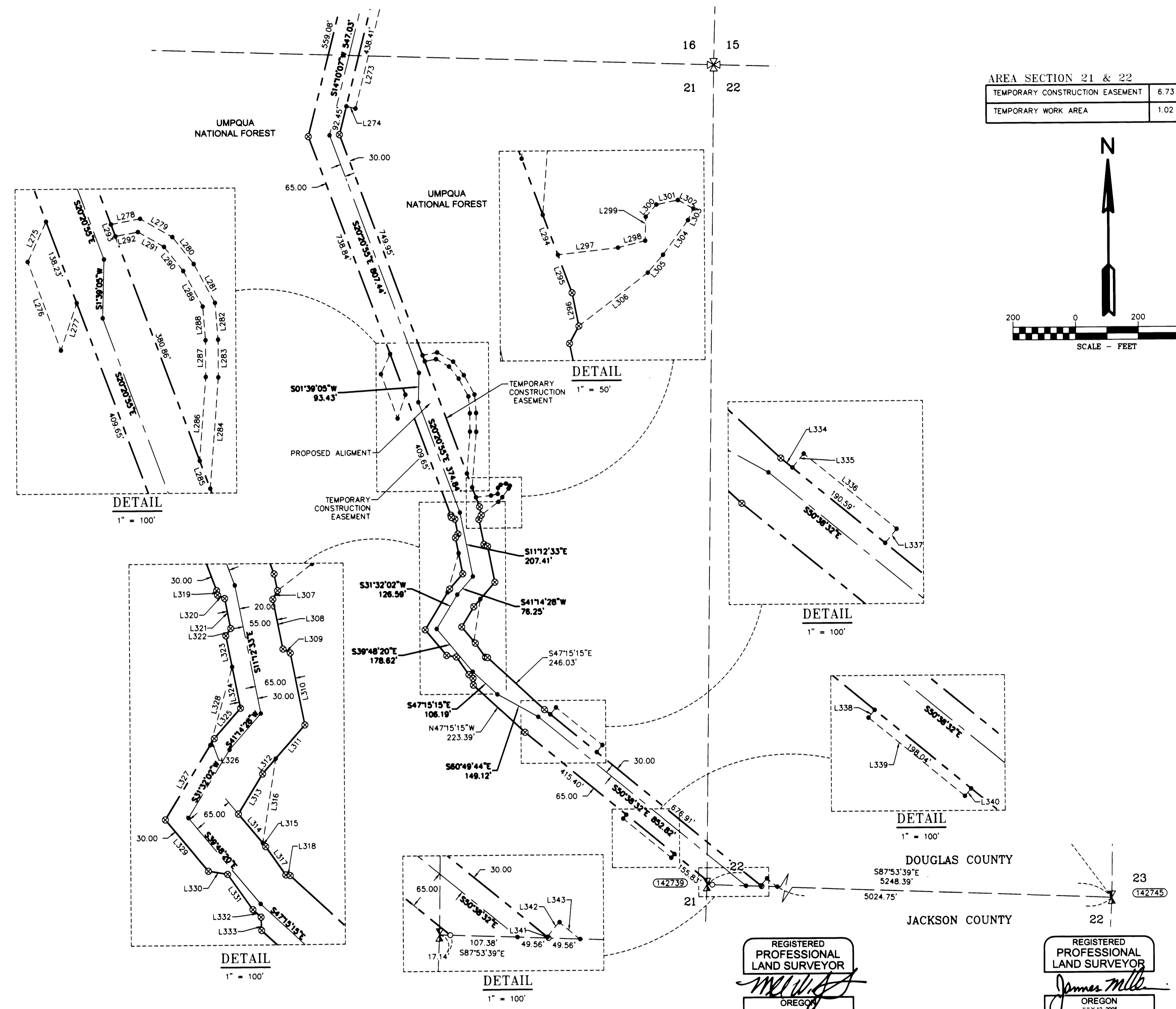
### CORNER NOTES:

(142739)  
WEST 1/4 CORNER SECTIONS 22  
FOUND 2-1/2" BRASS CAP  
STAMPED OLS 536, 1968  
AND CS 1988  
BT REFERENCES:  
1) 15" CEDAR WITH HEALED FACE  
AND TAG DATED 10/13  
S 23° E - 9.0' TO NAIL SIDE CENTER  
2) 24" D. FIR WITH TAG DATED 10/13  
N 76° W - 46.4' TO NAIL SIDE CENTER

(142745)  
EAST 1/4 CORNER SECTIONS 22  
FOUND 2-1/2" BRASS CAP  
STAMPED CS 1986  
BT REFERENCES:  
1) 12.5" D. FIR WITH HEALED FACE  
AND TAG DATED 8/86  
N 76° E - 28.4' TO NAIL SIDE CENTER  
2) 28" D. FIR 50' SNAG WITH HEALED FACE  
S 45° E - 7.5' NO TAG FOUND OR SET  
3) 19.5" D. FIR 30' SNAG WITH VISIBLE SCRIBE  
AND TAG DATED 8/86  
S 10° W - 9.9'  
4) 10" D. FIR BLAZED AND SCRIBED  
SET TAG DATED 8/14  
N 55° W - 11.95' TO NAIL SIDE CENTER

### LEGEND

- SET 5/8" X 24" REBAR WITH 1 1/4" YELLOW PLASTIC CAP (KLEIN & ASSOC. PLS 59002)
- ⊙ SET 5/8" X 24" REBAR WITH 1 1/4" YELLOW PLASTIC CAP (DYER PARTNER LS 2340)
- ⊙ FOUND MONUMENT OF RECORD, SEE CORNER NOTES
- COMPUTED POINT, NOT MONUMENTED
- ⊠ FOUND QUARTER CORNER SEE CORNER NOTES
- ⊠ FOUND SECTION CORNER SEE CORNER NOTES
- ⊠ COMPUTED QUARTER CORNER
- ⊠ COMPUTED SECTION CORNER
- ① POINT NUMBER
- PROPOSED ALIGNMENT
- - - - - TEMPORARY CONSTRUCTION EASEMENT
- - - - - TEMPORARY WORK AREA



REGISTERED  
PROFESSIONAL  
LAND SURVEYOR  
*Michael W. Erickson*  
OREGON  
JULY 26, 2008  
MICHAEL W. ERICKSON  
2340  
Expires 6-30-2015

REGISTERED  
PROFESSIONAL  
LAND SURVEYOR  
*James M. Klein*  
OREGON  
JULY 12, 2008  
JAMES M. KLEIN  
59002  
Expires 6-30-2015

**D** THE DYER PARTNERSHIP  
ENGINEERS & PLANNERS, INC.  
1330 Teakwood Avenue / Coos Bay, Oregon 97420  
(541) 269-0732 / WWW.DYERPART.COM

**KA**  
Klein & Associates, Inc.  
ENGINEERING • SURVEYING • PLANNING  
1411 13th Street • Hood River, OR 97031  
TEL: 541-386-3322 • FAX: 541-386-2515

PACIFIC CONNECTOR GAS PIPELINE PROJECT  
PACIFIC CONNECTOR GAS PIPELINE, LP  
RECORD OF SURVEY  
SECTIONS 21 AND 22  
TOWNSHIP 32 SOUTH, RANGE 2 WEST, W.M.  
DOUGLAS COUNTY OREGON

Pacific Connector  
GAS PIPELINE

DRAWN BY: LJS	DATE: 09-10-2014	ISSUED FOR BID:	SCALE: 1" = 200'
CHECKED BY:	DATE:	ISSUED FOR CONSTRUCTION:	
APPROVED BY:	DATE:	DRAWING NUMBER:	SHEET 8 OF 8