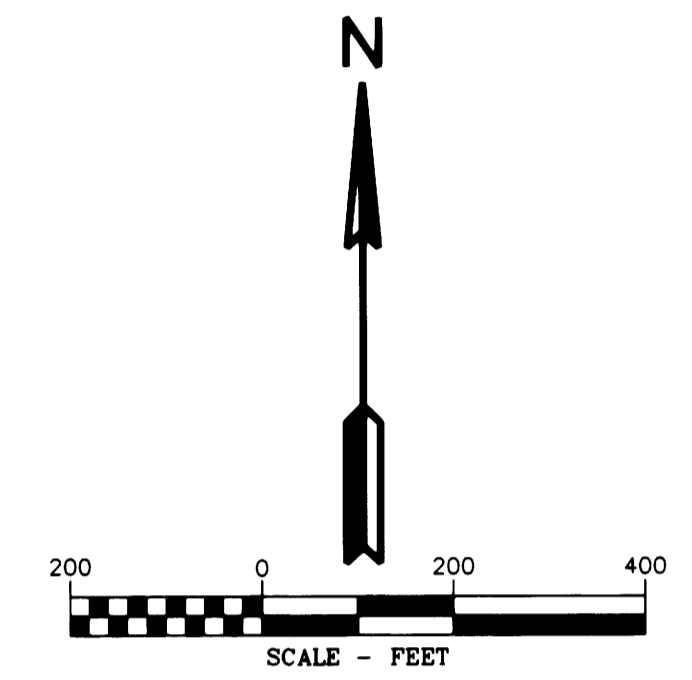
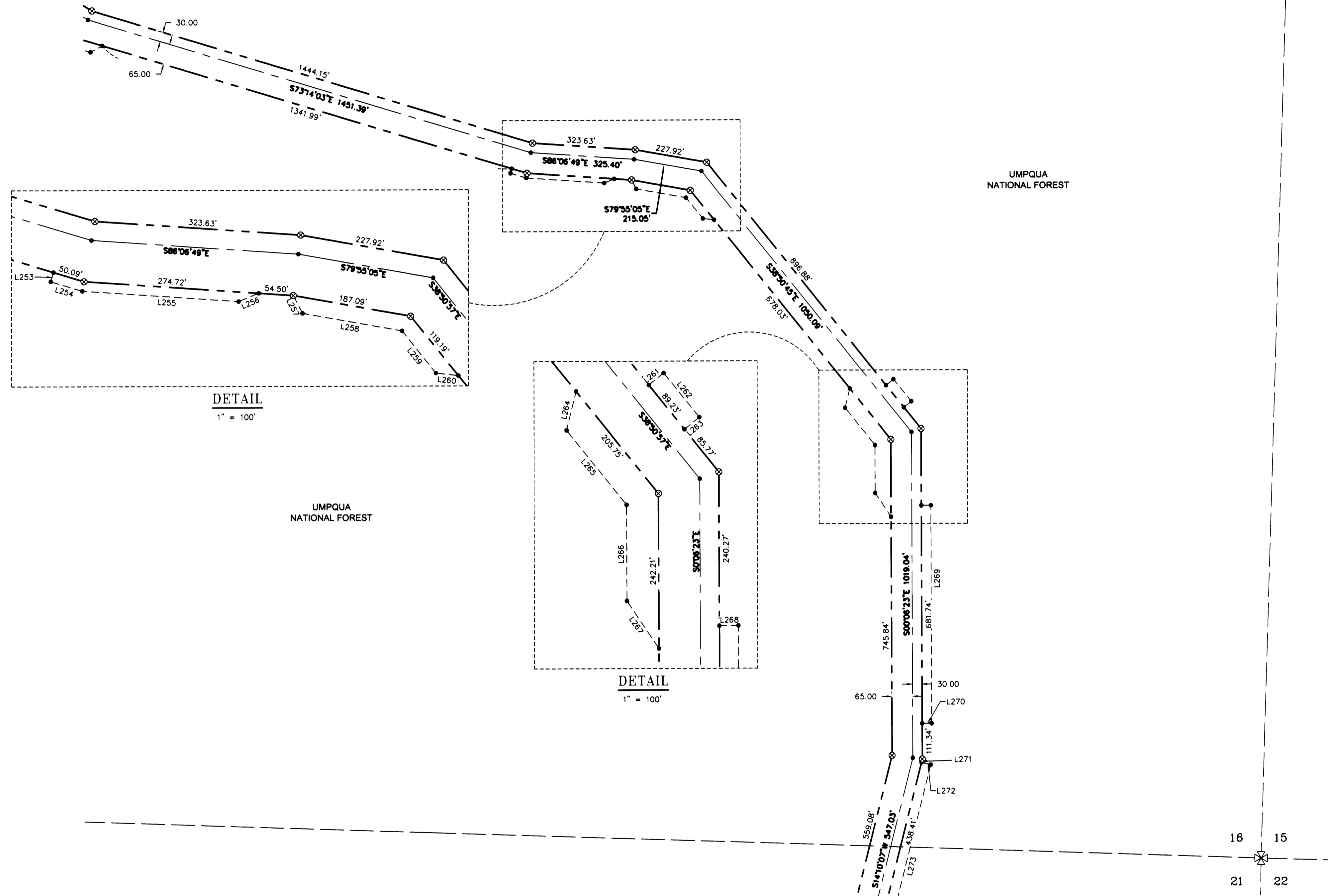


# RECORD OF SURVEY

LOCATED IN  
THE NW 1/4, THE SW 1/4 AND THE SE 1/4 OF  
SECTION 16  
TOWNSHIP 32 SOUTH, RANGE 2 WEST, W.M.  
DOUGLAS COUNTY, OREGON

REVISED SEE M166-35 A-H

**FILED**  
Date: 12-14-2014 By: J.C.  
This survey consists of:  
Map: H. 166-25 A-H  
Narrative:  
Gunter (ft):  
**DOUGLAS COUNTY**  
SURVEYOR



Line #	Direction	Length
L253	S16°46'12"W	15.10
L254	S73°13'48"E	51.70
L255	S86°07'39"E	245.83
L256	N67°48'10"E	34.16
L257	S27°05'32"E	31.38
L258	S79°55'05"E	158.86
L259	S38°50'45"E	84.43
L260	S83°25'49"E	35.54
L261	N51°09'15"E	30.00
L262	S38°50'45"E	89.23
L263	S51°09'15"W	30.00
L264	S13°50'34"W	62.82
L265	S38°50'32"E	150.00
L266	S0°05'50"E	150.00
L267	S33°53'25"E	89.90
L268	N89°54'19"E	29.95
L269	S0°05'41"E	681.74
L270	S89°54'19"W	29.81
L271	S14°10'07"W	10.60
L272	S79°52'01"E	29.80
L273	S14°07'59"W	438.41

**LEGEND**

- SET 5/8" X 24" REBAR WITH 1 1/4" YELLOW PLASTIC CAP (KLEIN & ASSOC. PLS 59002)
- ⊗ SET 5/8" X 24" REBAR WITH 1 1/4" YELLOW PLASTIC CAP (DYER PARTNER LS 2340)
- ⊙ FOUND MONUMENT OF RECORD, SEE CORNER NOTES
- COMPUTED POINT, NOT MONUMENTED
- ⊠ FOUND QUARTER CORNER SEE CORNER NOTES
- ⊞ FOUND SECTION CORNER SEE CORNER NOTES
- ⊞ COMPUTED QUARTER CORNER
- ⊞ COMPUTED SECTION CORNER
- POINT NUMBER
- PROPOSED ALIGNMENT
- - - - - TEMPORARY CONSTRUCTION EASEMENT
- - - - - TEMPORARY WORK AREA

REGISTERED PROFESSIONAL LAND SURVEYOR  
*Michael W. Erickson*  
OREGON JULY 28, 2008  
MICHAEL W. ERICKSON  
2340  
Expires 12-31-2015

REGISTERED PROFESSIONAL LAND SURVEYOR  
*James M. Klein*  
OREGON JULY 12, 2008  
JAMES M. KLEIN  
59002  
Expires 6-30-2015

**THE DYER PARTNERSHIP**  
**ENGINEERS & PLANNERS, INC.**  
1330 Teakwood Avenue / Coos Bay, Oregon 97420  
(541) 269-0732 / WWW.DYERPART.COM

**Klein & Associates, Inc.**  
ENGINEERING • SURVEYING • PLANNING  
1411 13th Street • Hood River, OR 97031  
TEL: 541-386-3322 • FAX: 541-386-2515

PACIFIC CONNECTOR GAS PIPELINE PROJECT PACIFIC CONNECTOR GAS PIPELINE, LP RECORD OF SURVEY SECTION 16 TOWNSHIP 32 SOUTH, RANGE 2 WEST, W.M. DOUGLAS COUNTY OREGON				
DRAWN BY: LJS	DATE: 09-10-2014	ISSUED FOR BID:	SCALE: 1" = 200'	
CHECKED BY:	DATE:	ISSUED FOR CONSTRUCTION:		
APPROVED BY:	DATE:	DRAWINGS NUMBER:		SHEET 7 OF 8