

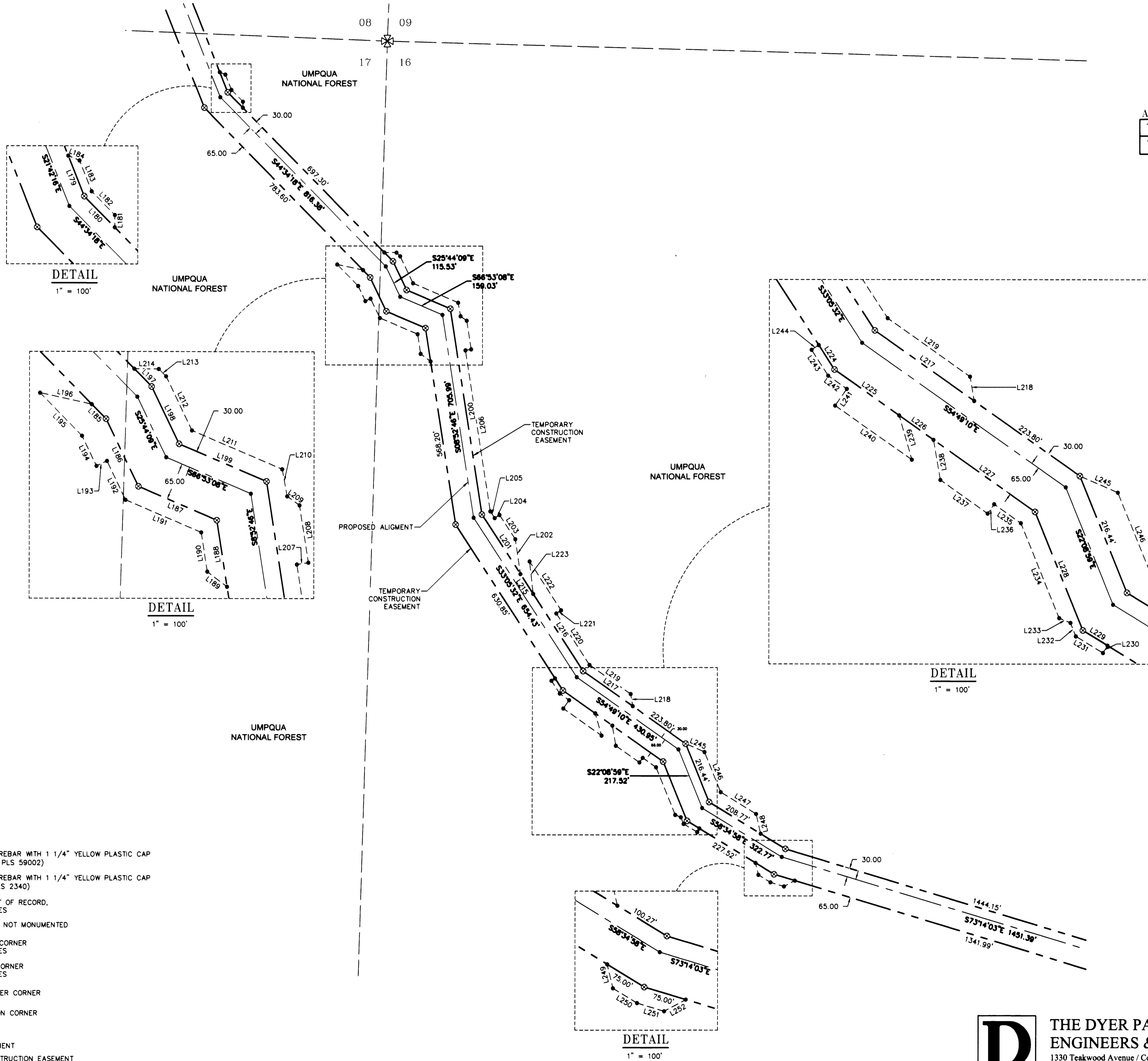
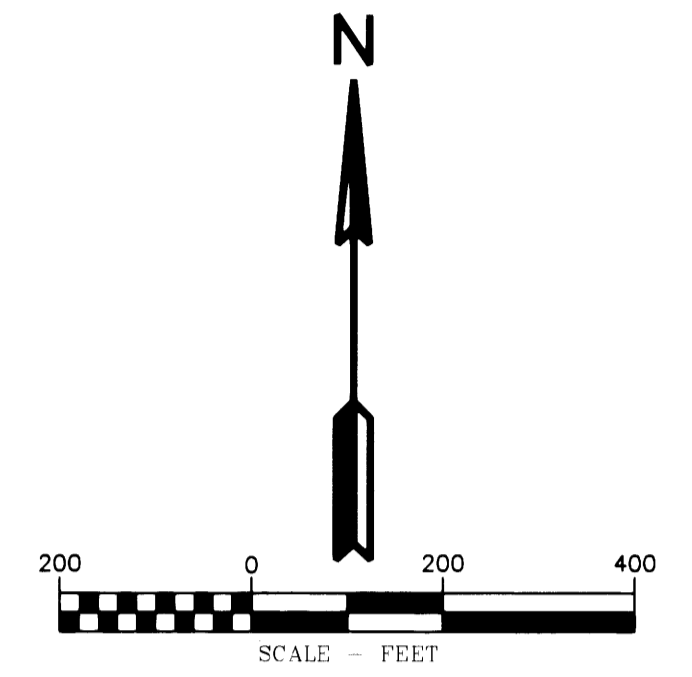
# RECORD OF SURVEY

LOCATED IN  
 THE NE 1/4 OF SECTION 17  
 AND  
 THE NW 1/4, THE SW 1/4 AND THE SE 1/4 OF SECTION 16  
 TOWNSHIP 32 SOUTH, RANGE 2 WEST, W.M.  
 DOUGLAS COUNTY, OREGON

REVISED SEE M166-35 A-H

**FILED**  
 Date: 12-10-14  
 This survey consists of:  
 Map: M166-35 A-H  
 No. of: \_\_\_\_\_  
 Corner kpts: \_\_\_\_\_  
**DOUGLAS COUNTY SURVEYOR**

AREA SECTION 17 & 16	
TEMPORARY CONSTRUCTION EASEMENT	17.45 ACRES
TEMPORARY WORK AREA	4.24 ACRES



LINE TABLE

Line #	Direction	Length	Line #	Direction	Length
L179	S21°42'16"E	75.00	L217	S54°49'10"E	210.18
L180	S44°34'18"E	75.00	L218	S9°51'04"E	42.45
L181	S0°25'42"W	21.21	L219	S54°49'10"E	174.39
L182	S44°34'18"E	56.97	L220	S33°05'32"E	211.17
L183	S21°42'16"E	56.97	L221	S56°54'25"W	20.00
L184	S66°53'08"E	21.21	L222	S33°05'35"E	200.00
L185	S44°34'18"E	35.15	L223	N6°31'41"W	111.80
L186	S25°44'09"E	129.14	L224	S33°05'32"E	50.00
L187	S66°53'08"E	147.40	L225	S54°49'10"E	136.67
L188	S8°52'46"E	115.70	L226	S54°49'10"E	72.65
L189	S53°11'05"E	42.95	L227	S54°49'10"E	215.05
L190	S8°52'46"E	68.33	L228	S22°08'59"E	219.87
L191	S66°53'08"E	142.03	L229	S58°34'58"E	50.00
L192	S25°44'09"E	74.32	L230	S31°25'02"W	15.00
L193	N64°15'51"E	20.00	L231	N58°34'58"W	54.94
L194	S25°44'09"E	57.79	L232	S22°08'58"E	24.95
L195	S44°34'18"E	103.47	L233	S67°09'00"E	21.21
L196	N77°42'08"W	91.48	L234	S22°08'59"E	176.06
L197	S44°34'18"E	42.99	L235	S54°49'10"E	56.56
L198	S25°44'09"E	109.24	L236	N35°10'50"E	19.84
L199	S66°53'08"E	164.41	L237	S54°49'10"E	100.00
L200	N8°52'46"W	716.19	L238	S9°51'04"E	70.24
L201	N33°05'32"W	244.29	L239	N16°09'36"W	79.33
L202	S8°38'17"E	120.78	L240	S54°58'36"E	161.95
L203	S33°05'35"E	100.00	L241	S35°10'50"W	35.00
L204	N56°54'25"E	20.00	L242	S54°49'10"E	39.55
L205	S33°05'32"E	27.90	L243	S33°05'32"E	52.88
L206	S8°52'46"E	560.53	L244	S56°54'28"W	15.00
L207	S81°07'14"W	20.00	L245	S66°29'50"E	71.53
L208	S8°52'46"E	100.00	L246	S22°08'59"E	148.84
L209	S54°19'32"E	26.22	L247	S58°34'58"E	143.14
L210	S10°27'57"E	47.48	L248	S13°06'16"E	70.13
L211	S66°53'08"E	169.78	L249	S13°34'58"E	42.43
L212	S25°44'09"E	102.96	L250	S58°34'58"E	48.86
L213	S44°34'18"E	17.96	L251	S73°13'48"E	48.86
L214	S89°34'18"E	42.43	L252	N61°46'12"E	42.43
L215	S33°05'32"E	81.02			
L216	S33°05'32"E	316.93			

REGISTERED PROFESSIONAL LAND SURVEYOR  
 OREGON  
 JULY 19, 2006  
 JAMES M. KLEIN  
 59002  
 Expires 6-30-2015

**KA**  
**Klein & Associates, Inc.**  
 ENGINEERING • SURVEYING • PLANNING  
 1411 13th Street Hood River, OR 97031  
 TEL: 541-386-3322 • FAX: 541-386-2515

REGISTERED PROFESSIONAL LAND SURVEYOR  
 OREGON  
 JULY 26, 1988  
 MICHAEL W. ERICKSON  
 2340  
 Expires 12-31-2015

**LEGEND**

- SET 5/8" X 24" REBAR WITH 1 1/4" YELLOW PLASTIC CAP (KLEIN & ASSOC. PLS 59002)
- ⊙ SET 5/8" X 24" REBAR WITH 1 1/4" YELLOW PLASTIC CAP (DYER PARTNER LS 2340)
- ⊙ FOUND MONUMENT OF RECORD, SEE CORNER NOTES
- COMPUTED POINT, NOT MONUMENTED
- ⊗ FOUND QUARTER CORNER, SEE CORNER NOTES
- ⊗ FOUND SECTION CORNER, SEE CORNER NOTES
- ⊗ COMPUTED QUARTER CORNER
- ⊗ COMPUTED SECTION CORNER
- POINT NUMBER
- PROPOSED ALIGNMENT
- - - TEMPORARY CONSTRUCTION EASEMENT
- · · TEMPORARY WORK AREA

**D** THE DYER PARTNERSHIP  
 ENGINEERS & PLANNERS, INC.  
 1330 Teakwood Avenue / Coos Bay, Oregon 97420  
 (541) 269-0732 / WWW.DYERPART.COM

PACIFIC CONNECTOR GAS PIPELINE PROJECT  
 PACIFIC CONNECTOR GAS PIPELINE, LP  
 RECORD OF SURVEY  
 SECTION 17 & 16  
 TOWNSHIP 32 SOUTH, RANGE 2 WEST, W.M.  
 DOUGLAS COUNTY OREGON

**Pacific Connector**  
 GAS PIPELINE

DRAWN BY: LJS	DATE: 09-10-2014	ISSUED FOR BID:	SCALE: 1" = 200'
CHECKED BY:	DATE:	ISSUED FOR CONSTRUCTION:	
APPROVED BY:	DATE:	DRAWING NUMBER:	SHEET 6 OF 8