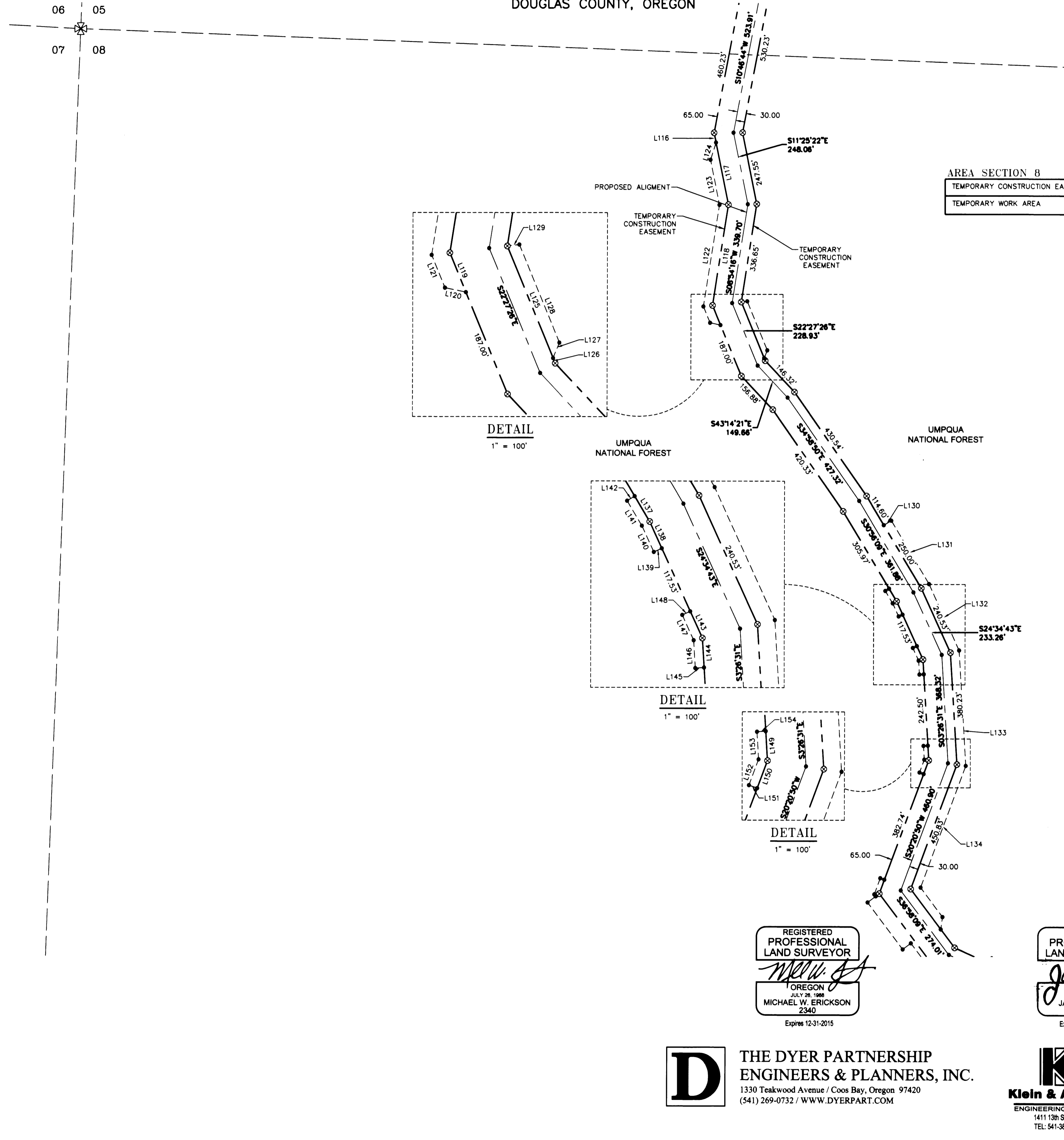


RECORD OF SURVEY

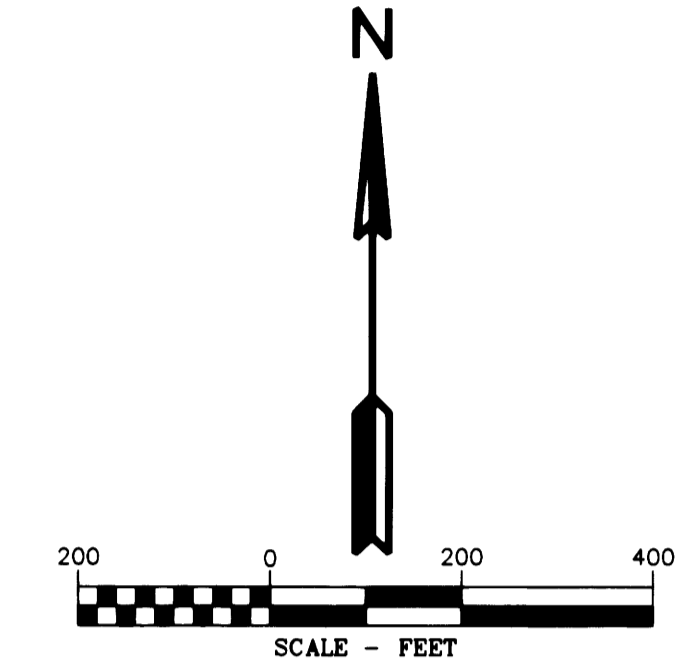
REVISED SEE M166-35 A-H

LOCATED IN
THE NW 1/4, THE NE 1/4 AND THE SE 1/4 OF SECTION 8
TOWNSHIP 32 SOUTH, RANGE 2 WEST, W.M.
DOUGLAS COUNTY, OREGON

FILED
Date: 12-4-2014 By: J.C.
This survey consists of:
Map: M166-25 A-H
Corner: spt:
DOUGLAS COUNTY
SURVEYOR



AREA SECTION 8	
TEMPORARY CONSTRUCTION EASEMENT	13.39 ACRES
TEMPORARY WORK AREA	2.02 ACRES



LINE TABLE

Line #	Direction	Length
L116	S11°25'22"E	33.77
L117	S11°25'22"E	215.39
L118	S8°54'16"W	346.29
L119	S22°27'26"E	72.10
L120	S77°57'29"E	36.52
L121	S22°27'45"E	59.88
L122	S8°55'23"W	349.36
L123	S11°25'18"E	155.94
L124	S17°35'45"W	61.83
L125	S22°27'26"E	205.63
L126	S22°27'26"E	9.38
L127	S22°13'37"W	28.34
L128	S22°27'45"E	179.91
L129	N83°10'26"E	20.68
L130	N59°03'51"E	30.00
L131	S30°56'09"E	251.67
L132	S24°34'39"E	247.79
L133	S3°26'33"E	392.15
L134	S20°20'50"W	440.75
L135	S36°58'09"E	124.99
L136	S8°01'51"W	42.43
L137	S30°56'09"E	50.00
L138	S24°34'43"E	50.00
L139	S65°25'21"W	15.00
L140	N24°34'39"W	49.17
L141	N30°56'09"W	49.17
L142	N59°03'51"E	15.00
L143	S24°34'43"E	50.00
L144	S3°26'31"E	50.00
L145	S86°33'27"W	15.00
L146	N3°26'33"W	47.20
L147	N24°34'39"W	47.20
L148	N65°25'21"E	15.00
L149	S3°26'31"E	50.00
L150	S20°20'50"W	50.00
L151	N69°39'10"W	15.00
L152	N20°20'50"E	46.84
L153	N3°26'33"W	46.84
L154	N86°33'27"E	15.00

LEGEND

- SET 5/8" X 24" REBAR WITH 1/4" YELLOW PLASTIC CAP (KLEIN & ASSOC. PLS 59002)
- ⊙ SET 5/8" X 24" REBAR WITH 1/4" YELLOW PLASTIC CAP (DYER PARTNER LS 2340)
- ⊙ FOUND MONUMENT OF RECORD, SEE CORNER NOTES
- COMPUTED POINT, NOT MONUMENTED
- ⊗ FOUND QUARTER CORNER SEE CORNER NOTES
- ⊗ FOUND SECTION CORNER SEE CORNER NOTES
- ⊗ COMPUTED QUARTER CORNER
- ⊗ COMPUTED SECTION CORNER
- ⑩ POINT NUMBER
- PROPOSED ALIGNMENT
- - - - - TEMPORARY CONSTRUCTION EASEMENT
- - - - - TEMPORARY WORK AREA

REGISTERED PROFESSIONAL LAND SURVEYOR
MICHAEL W. ERICKSON
2340
Expires 12-31-2015

REGISTERED PROFESSIONAL LAND SURVEYOR
JAMES M. KLEIN
59002
Expires 6-30-2015

D THE DYER PARTNERSHIP ENGINEERS & PLANNERS, INC.
1330 Teakwood Avenue / Coos Bay, Oregon 97420
(541) 269-0732 / WWW.DYERPART.COM

KA Klein & Associates, Inc.
ENGINEERING • SURVEYING • PLANNING
1411 13th Street • Hood River, OR 97031
TEL: 541-386-3322 • FAX: 541-386-2515

PACIFIC CONNECTOR GAS PIPELINE PROJECT
PACIFIC CONNECTOR GAS PIPELINE, LP
RECORD OF SURVEY
SECTION 08
TOWNSHIP 32 SOUTH, RANGE 2 WEST, W.M.
DOUGLAS COUNTY OREGON

Pacific Connector
GAS PIPELINE

DRAWN BY:	LJS	DATE:	09-10-2014	ISSUED FOR:	BID	SCALE:	1" = 200'
CHECKED BY:		DATE:		ISSUED FOR CONSTRUCTION:			
APPROVED BY:		DATE:		DRAWING NUMBER:			

SHEET 4 OF 8