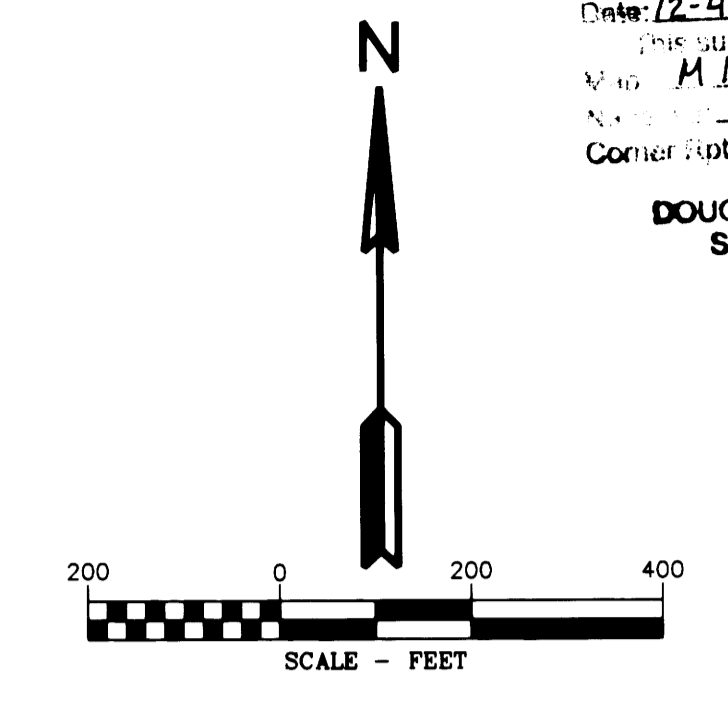


RECORD OF SURVEY

LOCATED IN THE
NW 1/4 AND THE SW 1/4 OF SECTION 5
TOWNSHIP 32 SOUTH, RANGE 2 WEST, W.M.
DOUGLAS COUNTY, OREGON

REVISED SEE M166-35 A-H

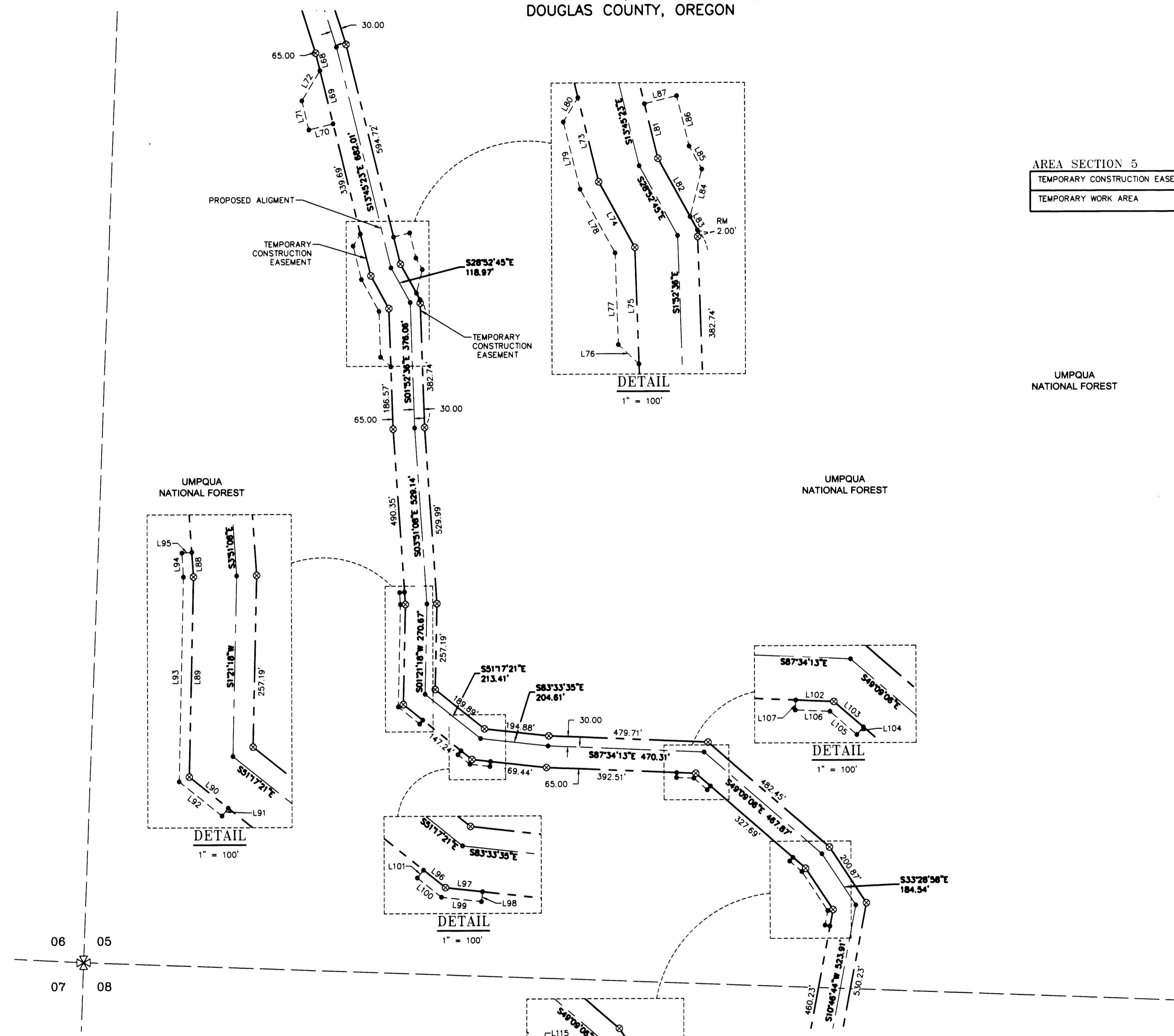
FILED
Date: 12-4-2014 By: JC
This survey consists of:
Map: M166-25 A-H
Corner:
DOUGLAS COUNTY
SURVEYOR



AREA SECTION 5	
TEMPORARY CONSTRUCTION EASEMENT	12.95 ACRES
TEMPORARY WORK AREA	1.84 ACRES

LINE TABLE

Line #	Direction	Length
L68	S13°45'23"E	54.21
L69	S13°45'23"E	164.49
L70	N76°14'37"E	75.00
L71	S13°45'23"E	89.49
L72	S31°14'37"W	106.07
L73	S13°45'23"E	130.00
L74	N28°52'45"W	111.99
L75	S1°52'36"E	175.00
L76	S46°52'36"E	42.43
L77	S1°52'36"E	137.80
L78	S28°52'45"E	108.77
L79	S13°45'23"E	103.98
L80	S31°14'37"W	42.43
L81	S13°45'23"E	84.36
L82	S28°52'45"E	99.67
L83	S28°52'45"E	22.53
L84	N14°11'15"E	73.22
L85	N28°52'45"W	39.53
L86	N13°45'23"W	77.72
L87	S76°14'37"W	50.00
L88	S35°1'08"E	36.95
L89	S1°21'18"W	299.87
L90	S51°17'21"E	75.00
L91	N38°42'40"E	15.00
L92	S51°17'19"E	82.42
L93	S1°21'18"W	306.76
L94	S33°7'42"E	36.09
L95	S86°03'02"W	14.84
L96	S51°17'21"E	42.13
L97	S83°33'35"E	56.25
L98	N6°30'21"E	15.00
L99	S83°33'35"E	60.57
L100	S51°17'21"E	46.47
L101	S38°42'40"W	15.00
L102	S87°34'13"E	57.43
L103	S49°09'06"E	58.57
L104	N40°50'48"E	15.01
L105	S49°09'10"E	53.35
L106	S87°34'13"E	52.19
L107	S2°25'48"W	15.00
L108	S49°09'06"E	50.02
L109	S33°28'58"E	149.16
L110	S10°46'44"W	50.00
L111	S79°13'33"E	14.99
L112	S10°46'27"W	43.90
L113	S33°29'04"E	141.02
L114	S49°09'09"E	47.94
L115	S40°50'51"W	15.00



- LEGEND**
- SET 5/8" X 24" REBAR WITH 1/4" YELLOW PLASTIC CAP (KLEIN & ASSOC. PLS 59002)
 - ⊗ SET 5/8" X 24" REBAR WITH 1/4" YELLOW PLASTIC CAP (DYER PARTNER LS 2340)
 - ⊙ FOUND MONUMENT OF RECORD, SEE CORNER NOTES
 - COMPUTED POINT, NOT MONUMENTED
 - ⊗ FOUND QUARTER CORNER, SEE CORNER NOTES
 - ⊗ FOUND SECTION CORNER, SEE CORNER NOTES
 - ⊗ COMPUTED QUARTER CORNER
 - ⊗ COMPUTED SECTION CORNER
 - ① POINT NUMBER
 - PROPOSED ALIGNMENT
 - - - - - TEMPORARY CONSTRUCTION EASEMENT
 - TEMPORARY WORK AREA

REGISTERED PROFESSIONAL LAND SURVEYOR
Michael W. Erickson
OREGON
JULY 28, 1988
MICHAEL W. ERICKSON
2340
Expires 12-31-2015

REGISTERED PROFESSIONAL LAND SURVEYOR
James M. Klein
OREGON
JULY 12, 2005
JAMES M. KLEIN
59002
Expires 6-30-2015

D THE DYER PARTNERSHIP
ENGINEERS & PLANNERS, INC.
1330 Teakwood Avenue / Coos Bay, Oregon 97420
(541) 269-0732 / WWW.DYERPART.COM

Klein & Associates, Inc.
ENGINEERING • SURVEYING • PLANNING
1411 13th Street • Hood River, OR 97031
TEL: 541-386-3322 • FAX: 541-386-2515

PACIFIC CONNECTOR GAS PIPELINE PROJECT PACIFIC CONNECTOR GAS PIPELINE, LP RECORD OF SURVEY SECTION 05 TOWNSHIP 32 SOUTH, RANGE 2 WEST, W.M. DOUGLAS COUNTY OREGON		
DRAWN BY: LJS	DATE: 09-10-2014	
CHECKED BY: _____	DATE: _____	ISSUED FOR CONSTRUCTION: _____
APPROVED BY: _____	DATE: _____	DRAWING NUMBER: _____
		SHEET 3 OF 8