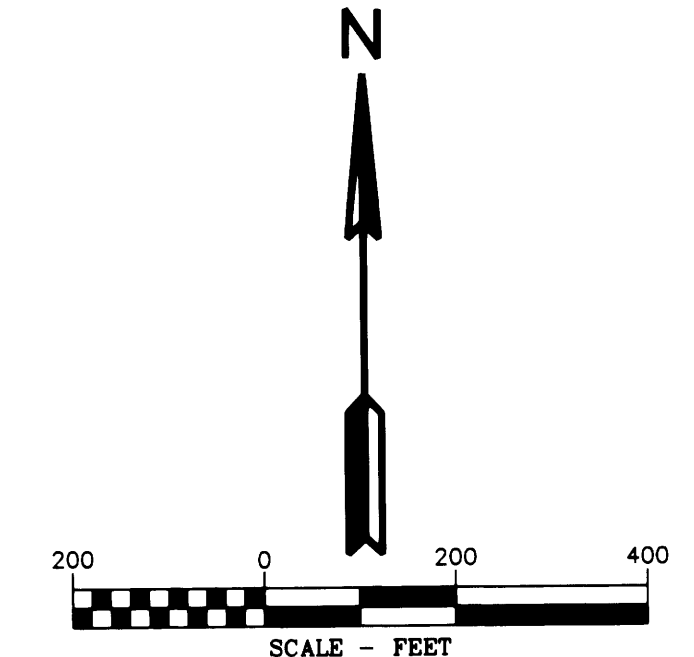
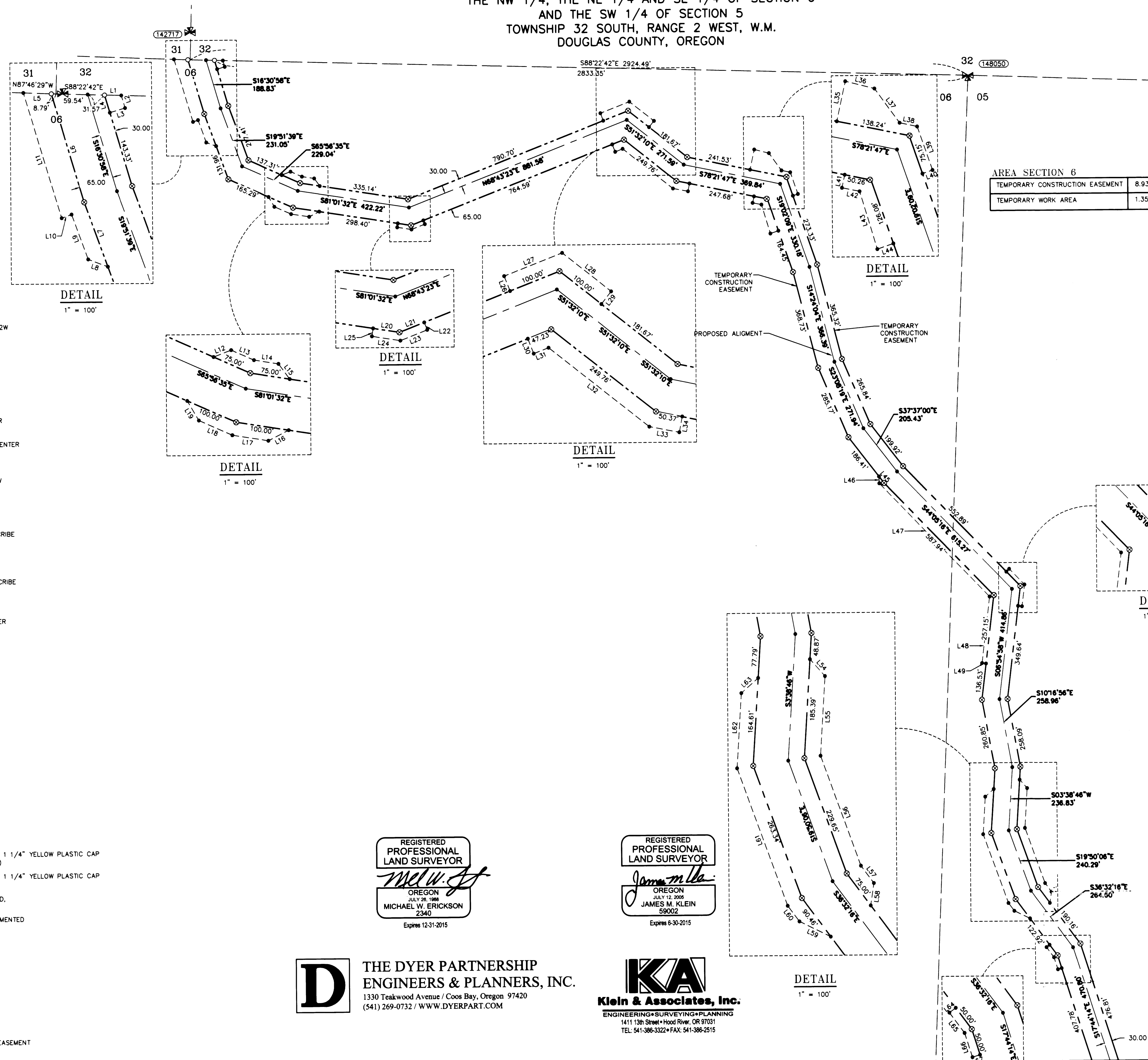


RECORD OF SURVEY

LOCATED IN
THE NW 1/4, THE NE 1/4 AND SE 1/4 OF SECTION 6
AND THE SW 1/4 OF SECTION 5
TOWNSHIP 32 SOUTH, RANGE 2 WEST, W.M.
DOUGLAS COUNTY, OREGON

REVISED SEE M166-35 A-H

FILED
Date: 12-4-2014 By: JC
This survey consists of:
Map: M166-258-A-H
Narrative:
Corner Rpt:
DOUGLAS COUNTY SURVEYOR



AREA SECTION 6	
TEMPORARY CONSTRUCTION EASEMENT	8.93 ACRES
TEMPORARY WORK AREA	1.35 ACRES

CORNER NOTES:

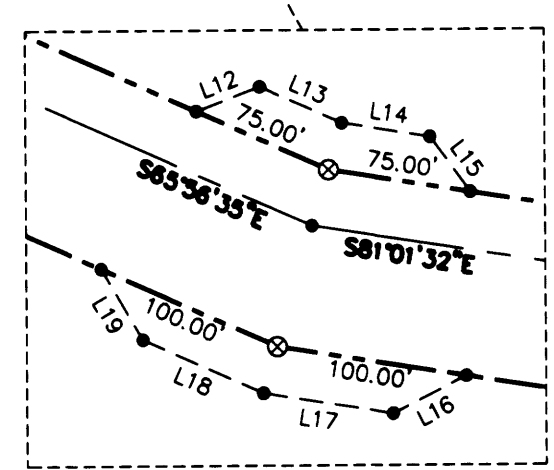
- (142717)
SOUTHWEST CORNER SECTIONS 32 T351-R02W
FOUND 2-1/2" BRASS CAP
STAMPED COUNTY SURVEYORS OFFICE 1966
BT REFERENCES:
1) 15" GRAND FIR
SET TAG DATED 8/14
S 66° W - 13.2' TO NAIL SIDE CENTER
2) 10" GRAND FIR
SET TAG DATED 8/14
S 44° E - 24.6' TO NAIL SIDE CENTER
3) 16" MADRONE WITH HEALED FACE
AND TAG DATED 8/66
N 32° W - 27.6' TO NAIL SIDE CENTER
4) 17" MADRONE HEALED FACE
AND TAG DATED 8/66
N 52-1/2° W - 35.6' TO NAIL SIDE CENTER

- (148050)
NORTHEAST CORNER SECTION 6 T325-R02W
FOUND 2-1/2" BRASS CAP
STAMPED COUNTY SURVEYORS OFFICE 1966
BT REFERENCES:
1) 13" D. FIR
SET TAG DATED 8/14
S 66° E - 18.6' TO NAIL SIDE CENTER
2) 19" D. FIR 10' STUMP WITH VISIBLE SCRIBE
AND TAG DATED 9/66
S 24° W - 27.1'
3) 10" D. FIR
SET TAG DATED 8/14
S 73° W - 1.2' TO NAIL SIDE CENTER
4) 32" D. FIR 10' STUMP WITH VISIBLE SCRIBE
AND TAG DATED 9/66
S 21-1/2° W, 10.6'
5) 15" D. FIR
SET TAG DATE 8/14
N 21° W - 17.85' TO NAIL SIDE CENTER

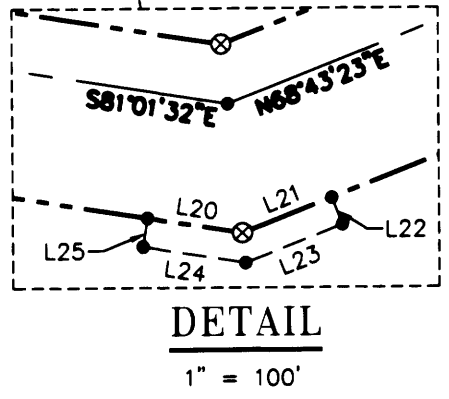
LEGEND

- SET 5/8" X 24" REBAR WITH 1 1/4" YELLOW PLASTIC CAP (KLEIN & ASSOC. PLS 59002)
- ⊗ SET 5/8" X 24" REBAR WITH 1 1/4" YELLOW PLASTIC CAP (DYER PARTNER LS 2340)
- ⊙ FOUND MONUMENT OF RECORD, SEE CORNER NOTES
- COMPUTED POINT, NOT MONUMENTED
- ⚡ FOUND QUARTER CORNER SEE CORNER NOTES
- ⊠ FOUND SECTION CORNER SEE CORNER NOTES
- ⊞ COMPUTED QUARTER CORNER
- ⊞ COMPUTED SECTION CORNER
- ⊞ POINT NUMBER
- PROPOSED ALIGNMENT
- - - - - TEMPORARY CONSTRUCTION EASEMENT
- - - - - TEMPORARY WORK AREA

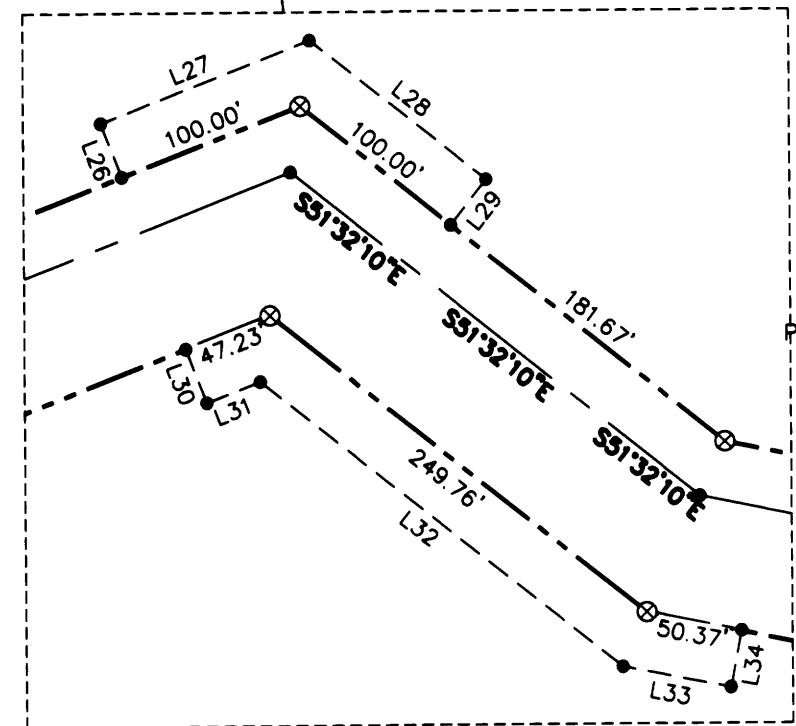
DETAIL
1" = 100'



DETAIL
1" = 100'



DETAIL
1" = 100'



DETAIL
1" = 100'

DETAIL
1" = 100'

DETAIL
1" = 100'

LINE TABLE

Line #	Direction	Length	Line #	Direction	Length
L1	S88°22'42"E	31.53	L35	N12°20'21"E	76.49
L2	S16°31'33"E	24.66	L36	S75°39'20"E	56.48
L3	S73°29'02"W	29.97	L37	S35°56'42"E	79.68
L4	S16°30'58"E	34.48	L38	S77°39'39"E	33.66
L5	N87°46'09"W	52.40	L39	S19°02'09"E	86.23
L6	S16°30'58"E	211.80	L40	S71°13'47"W	20.00
L7	S19°51'39"E	128.63	L41	S12°20'05"W	25.00
L8	S69°26'38"E	39.40	L42	S78°21'47"E	33.76
L9	S19°51'39"E	89.59	L43	S16°35'53"E	113.25
L10	N70°08'21"E	20.00	L44	N70°57'58"E	32.03
L11	S16°37'52"E	245.02	L45	S37°37'00"E	30.95
L12	N69°03'25"E	35.36	L46	S1°54'01"E	25.69
L13	S65°56'35"E	46.69	L47	S43°58'07"E	592.50
L14	S81°01'32"E	46.69	L48	S6°54'58"W	250.00
L15	S36°01'32"E	35.36	L49	S83°05'01"E	15.00
L16	N63°11'51"E	42.79	L50	S45°54'44"W	15.00
L17	S81°00'36"E	68.59	L51	N44°05'16"W	82.16
L18	S65°56'35"E	68.61	L52	N6°54'58"E	82.16
L19	S30°10'21"E	42.77	L53	S83°05'02"E	15.00
L20	S81°01'32"E	50.00	L54	N41°21'14"W	42.43
L21	N68°43'23"E	50.00	L55	N3°38'46"E	149.16
L22	N21°16'37"W	15.00	L56	N19°50'02"W	219.01
L23	N68°43'23"E	54.05	L57	N36°32'20"W	40.60
L24	S81°01'32"E	54.05	L58	N8°27'40"E	42.43
L25	S8°58'28"W	15.00	L59	S63°52'21"E	65.33
L26	N21°16'37"W	30.00	L60	S36°32'20"E	36.82
L27	N68°43'23"E	117.23	L61	S19°50'02"E	273.98
L28	S51°32'10"E	117.23	L62	S3°38'46"W	140.84
L29	S38°27'50"W	30.00	L63	S48°38'46"W	42.43
L30	S21°16'35"E	30.00	L64	S53°27'40"W	15.00
L31	N68°43'23"E	30.00	L65	S36°32'20"E	47.52
L32	S51°32'10"E	240.30	L66	S17°44'14"E	47.52
L33	S79°03'43"E	57.35	L67	N72°15'46"E	15.00
L34	N10°56'16"E	29.58	L68	S13°45'23"E	54.21

REGISTERED PROFESSIONAL LAND SURVEYOR
Michael W. Erickson
OREGON
JULY 28 1988
MICHAEL W. ERICKSON
2340
Expires 12-31-2015

REGISTERED PROFESSIONAL LAND SURVEYOR
James M. Klein
OREGON
JULY 12 2005
JAMES M. KLEIN
59002
Expires 6-30-2015

D THE DYER PARTNERSHIP ENGINEERS & PLANNERS, INC.
1330 Teakwood Avenue / Coos Bay, Oregon 97420
(541) 269-0732 / WWW.DYERPART.COM

KA Klein & Associates, Inc.
ENGINEERING • SURVEYING • PLANNING
1411 13th Street • Hood River, OR 97031
TEL: 541-386-3322 • FAX: 541-386-2515

PACIFIC CONNECTOR GAS PIPELINE PROJECT
PACIFIC CONNECTOR GAS PIPELINE, LP
RECORD OF SURVEY
SECTIONS 05 AND 06
TOWNSHIP 32 SOUTH, RANGE 2 WEST, W.M.
DOUGLAS COUNTY OREGON

Pacific Connector GAS PIPELINE

DRAWN BY: LIS	DATE: 09-10-2014	ISSUED FOR BID:	SCALE: 1" = 200'
CHECKED BY:	DATE:	ISSUED FOR CONSTRUCTION:	
APPROVED BY:	DATE:	DRAWING NUMBER:	SHEET 2 OF 8