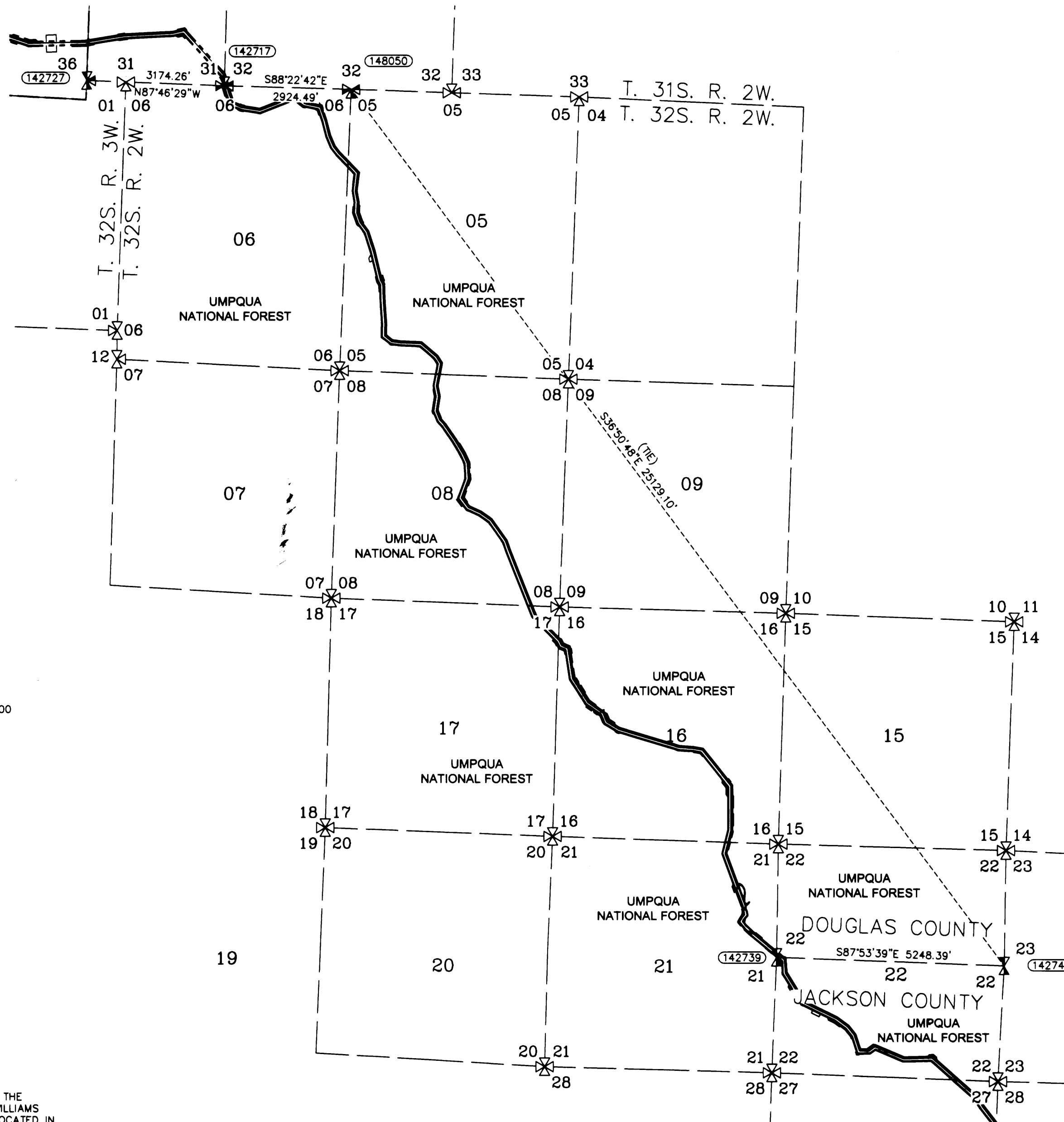


RECORD OF SURVEY

LOCATED IN SECTIONS 5,6,8,16,17,21 AND 22 TOWNSHIP 32 SOUTH, RANGE 2 WEST, W.M. DOUGLAS COUNTY, OREGON

REVISED SEE M166-35 A-H

FILED
Date: 12-4-2014 By: JC
This survey consists of:
Map: M166-35 A-H
Narrative:
Corner Rpt:
DOUGLAS COUNTY SURVEYOR



CORNER NOTES:

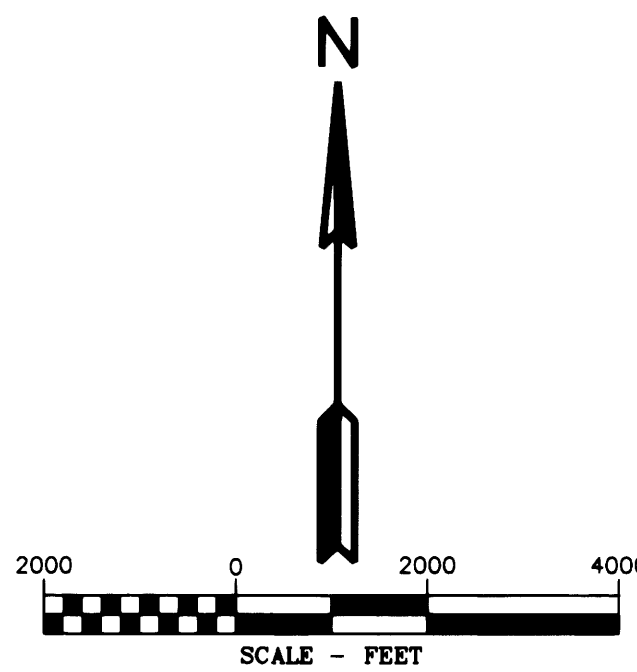
(142727)
SOUTHWEST CORNER SECTIONS 31, T31S-R02W
FOUND 2-1/2" BRASS CAP
STAMPED COUNTY SURVEYORS OFFICE 1966
BT REFERENCES:
1) 38" D. FIR SNAG WITH HEALED FACE AND TAG DATED 6/80
N 42° E - 22.8' TO NAIL SIDE CENTER
2) 41" D. FIR WITH HEALED FACE AND TAG DATED 6/80
S 29° E - 34.0'
3) 11" D. FIR
SET TAG DATED 8/14
N 20' W - 14.3' TO NAIL SIDE CENTER
4) 20" HEMLOCK WITH HEALED FACE AND TAG DATED 6/80
N 50° E - 44.6' TO NAIL SIDE CENTER

(142717)
SOUTHWEST CORNER SECTIONS 32 T32S-R02W
FOUND 2-1/2" BRASS CAP
STAMPED COUNTY SURVEYORS OFFICE 1966
BT REFERENCES:
1) 15" GRAND FIR
SET TAG DATED 8/14
S 66° W - 13.2' TO NAIL SIDE CENTER
2) 10" GRAND FIR
SET TAG DATED 8/14
S 44° E - 24.6' TO NAIL SIDE CENTER
3) 15" MADRONE WITH HEALED FACE AND TAG DATED 8/66
N 32° W - 27.6' TO NAIL SIDE CENTER
4) 17" MADRONE HEALED FACE AND TAG DATED 8/66
N 52-1/2° W - 35.6' TO NAIL SIDE CENTER

(148050)
NORTHEAST CORNER SECTION 6 T32S-R02W
FOUND 2-1/2" BRASS CAP
STAMPED COUNTY SURVEYORS OFFICE 1966
BT REFERENCES:
1) 13" D. FIR
SET TAG DATED 8/14
S 68° E - 18.6' TO NAIL SIDE CENTER
2) 19" D. FIR 10" STUMP WITH VISIBLE SCRIBE AND TAG DATED 9/66
S 44° W - 27.1'
3) 10" D. FIR
SET TAG DATED 8/14
S 73° W - 1.2' TO NAIL SIDE CENTER
4) 32" D. FIR 10" STUMP WITH VISIBLE SCRIBE AND TAG DATED 9/66
S 21-1/2° W, 10.6'
5) 15" D. FIR
SET TAG DATE 8/14
N 21° W - 17.85' TO NAIL SIDE CENTER

LEGEND

- SET 5/8" X 24" REBAR WITH 1 1/4" YELLOW PLASTIC CAP (KLEIN & ASSOC. PLS 59002)
- ⊗ SET 5/8" X 24" REBAR WITH 1 1/4" YELLOW PLASTIC CAP (DYER PARTNER LS 2340)
- ⊙ FOUND MONUMENT OF RECORD, SEE CORNER NOTES
- COMPUTED POINT, NOT MONUMENTED
- ⊗ FOUND QUARTER CORNER, SEE CORNER NOTES
- ⊗ FOUND SECTION CORNER, SEE CORNER NOTES
- ⊗ COMPUTED QUARTER CORNER
- ⊗ COMPUTED SECTION CORNER
- POINT NUMBER
- PROPOSED ALIGNMENT
- TEMPORARY CONSTRUCTION EASEMENT
- TEMPORARY WORK AREA



BASIS OF BEARINGS

OREGON STATE PLANE COORDINATE SYSTEM NAD 1983 (CONUS) OREGON SOUTH ZONE 3602 US SURVEY FOOT GRID NORTH

SHEET INDEX:

- SHEET 1 = COVER PAGE TOWNSHIP OVERVIEW
- SHEET 2 = SECTIONS 6 & 5
- SHEET 3 = SECTION 5
- SHEET 4 = SECTION 8
- SHEET 5 = SECTION 8
- SHEET 6 = SECTIONS 17 & 16
- SHEET 7 = SECTIONS 17 & 16
- SHEET 8 = SECTIONS 21 & 22

NARRATIVE

THE PURPOSE OF THIS SURVEY IS TO MONUMENT THE TEMPORARY CONSTRUCTION CORRIDOR FOR THE WILLIAMS PACIFIC CONNECTOR GAS LINE. THIS SURVEY IS LOCATED IN TOWNSHIP 32 SOUTH, RANGE 2 WEST, OF THE WILLAMETTE MERIDIAN.

THE PUBLIC LAND SURVEY SYSTEM MONUMENTS WERE FOUND AND TIED BY KLEIN & ASSOCIATES.

THE TEMPORARY CONSTRUCTION EASEMENT WAS SURVEYED AND MONUMENTED BY THE DYER PARTNERSHIP ENGINEERS & PLANNERS, INC.

THE INTERSECTION OF THE TEMPORARY CONSTRUCTION EASEMENT AND THE FEDERAL LANDS WERE MONUMENTED BY KLEIN & ASSOCIATES.

SCALE FACTOR NOTE

THE DISTANCES SHOWN ON THIS SURVEY ARE GRID DISTANCES. THE COMBINED SCALE FACTOR = 0.999745737 TO CONVERT FROM GRID TO GROUND MULTIPLY THE DISTANCE BY 1.000254328.

EXAMPLE: 300.00' GRID DISTANCE
300.00' x 1.000254328 = 300.08' GROUND DISTANCE.

SURVEYOR'S CERTIFICATE

I, JAMES M. KLEIN BEING DULY SWORN AS A PROFESSIONAL LAND SURVEYOR IN THE STATE OF OREGON DO HEREBY CERTIFY THAT THIS MAP CORRECTLY REPRESENTS A SURVEY CONDUCTED UNDER MY DIRECT SUPERVISION IN CONFORMANCE WITH THE REQUIREMENTS OF THE SURVEY RECORDING LAW, AS ESTABLISHED BY ORS CHAPTER 209, AND HAVE SET THE PROPER MONUMENTS AS REFERENCED IN THE LEGEND BY MY REGISTRATION NUMBER AND SEAL.

FURTHERMORE, I APPROVE THE LOCATION OF THE MONUMENTS AS DEPICTED ON THIS SURVEY DRAWING TO BE IN THEIR PROPER LOCATION.

James M. Klein
JAMES M. KLEIN PLS. 59002

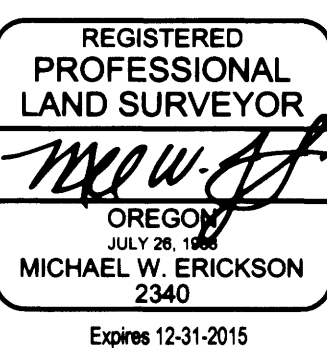
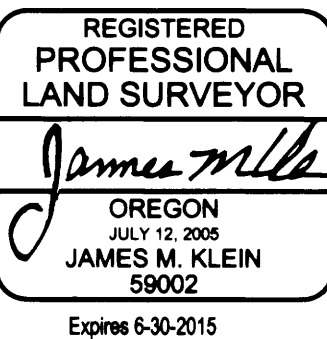
SURVEYOR'S CERTIFICATE

I, MICHAEL W. ERICKSON BEING DULY SWORN AS A PROFESSIONAL LAND SURVEYOR IN THE STATE OF OREGON DO HEREBY CERTIFY THAT THIS MAP CORRECTLY REPRESENTS A SURVEY CONDUCTED UNDER MY DIRECT SUPERVISION IN CONFORMANCE WITH THE REQUIREMENTS OF THE SURVEY RECORDING LAW, AS ESTABLISHED BY ORS CHAPTER 209, AND HAVE SET THE PROPER MONUMENTS AS REFERENCED IN THE LEGEND BY MY REGISTRATION NUMBER AND SEAL.

FURTHERMORE, I APPROVE THE LOCATION OF THE MONUMENTS AS DEPICTED ON THIS SURVEY DRAWING TO BE IN THEIR PROPER LOCATION.

Michael W. Erickson
MICHAEL W. ERICKSON PLS. 2340

SURVEY PERFORMED FOR:
WILLIAMS
DATE OF MONUMENTATION: AUGUST 7, 2014
PROJECT: 14-02-05 DRAFT: GD, LS
FILE: RS-365-05E.DWG



PACIFIC CONNECTOR GAS PIPELINE PROJECT			
PACIFIC CONNECTOR GAS PIPELINE, LP			
RECORD OF SURVEY			
TOWNSHIP 32 SOUTH, RANGE 2 WEST, W.M. DOUGLAS COUNTY OREGON			
DRAWN BY:	LJS	DATE: 09-10-2014	ISSUED FOR BID: SCALE: 1" = 2000'
CHECKED BY:		DATE:	ISSUED FOR CONSTRUCTION:
APPROVED BY:		DATE:	DRAWING NUMBER: SHEET 1 OF 8