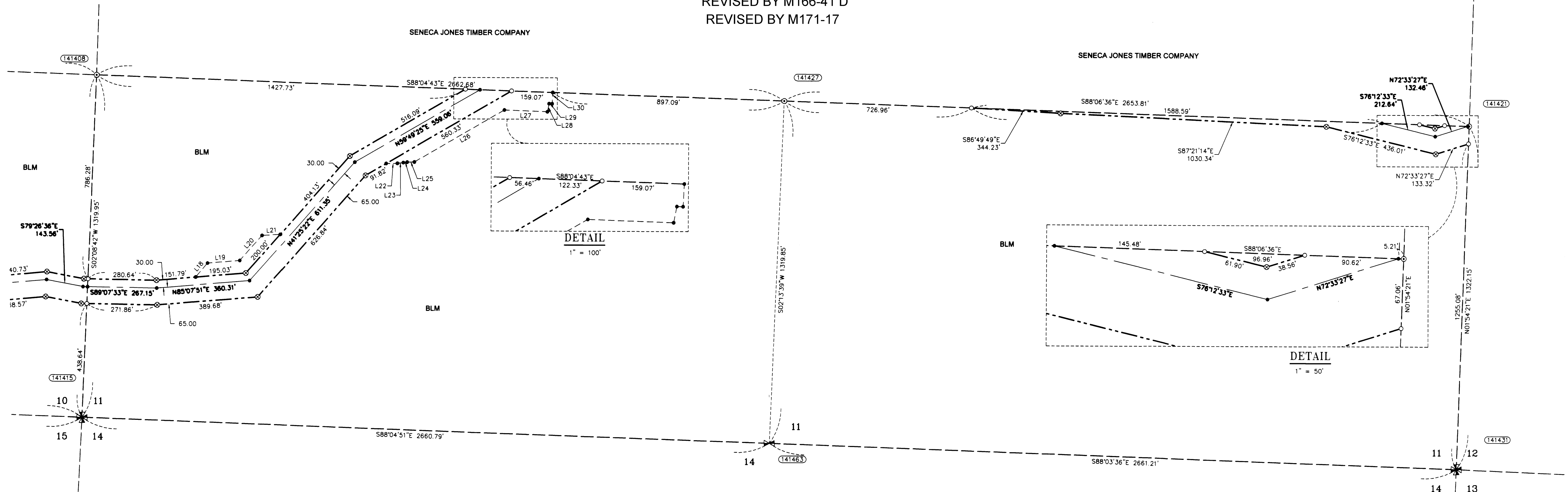


RECORD OF SURVEY

LOCATED IN THE
 SW 1/4 AND THE SE 1/4 OF SECTION 11
 TOWNSHIP 29 SOUTH, RANGE 8 WEST, W.M.
 DOUGLAS COUNTY, OREGON

REVISED BY M166-41 D
 REVISED BY M171-17

FILED
 Date: 12/14/2014 By: J.C.
 This survey consists of
 Map: M166-41 D
 Narrative: REVISED BY M166-41 D
 Corner Rpt: REVISED BY M171-17
 DOUGLAS COUNTY
 SURVEYOR



(141408) SOUTH 1/16 CORNER SECTIONS 10/11
 FOUND 3.25" BRASS CAP
 STAMPED BLM 1980
 BT REFERENCES:
 1) 19" FIR WITH HEALED FACE
 AND TAG DATED 6/80
 N 70-1/4° E - 46.2'

(141427) SOUTH 1/16 CORNER SECTIONS 11/12
 FOUND 3.25" BRASS CAP
 STAMPED BLM 1980
 BT REFERENCES:
 1) 19" FIR WITH HEALED FACE
 AND TAG DATED 5/80
 S 20° E - 78.5'
 2) 42" FIR WITH HEALED FACE
 AND TAG DATED 5/80
 S 16° W - 19.1'

(141433) SE 1/4 CORNER SECTION 11
 FOUND 2.5" BRASS CAP
 STAMPED U.S. G.O. DATED 1924
 BT REFERENCES:
 1) 43" MADRONE WITH HEALED FACE
 AND TAG DATED 4/7/77
 N 25° E - 48.1'
 2) 26" FIR WITH HEALED FACE
 AND TAG DATED 4/98
 S 81° E - 12.0'
 3) 26" FIR WITH BLAZED FACE
 AND TAG DATED 4/98
 S 66° W - 3'
 4) SET NEW BT
 5" FIR WITH BLAZED FACE
 AND SET TAG DATED 5/10/14
 N 13° W - 13.4' TO NAIL SIDE CENTER
 5) SET NEW BT
 12" FIR WITH BLAZED FACE
 AND SET TAG DATED 5/10/14
 N 40° E - 47.1' TO NAIL SIDE CENTER

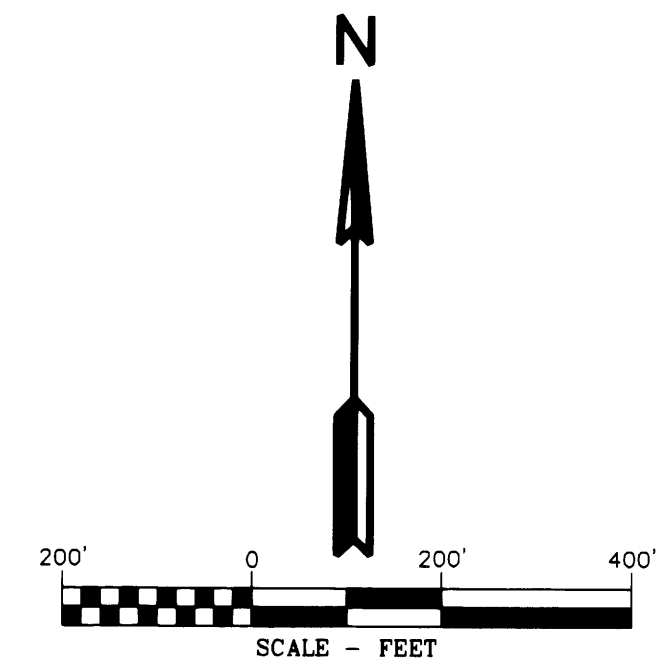
(141427) CS 1/16 CORNER SECTION 11
 FOUND 3.25" BRASS CAP
 STAMPED BLM 1980
 BT REFERENCES:
 1) 6" FIR WITH HEALED FACE
 AND TAG DATED 6/80
 S 0-1/2° E - 25.7'

(141415) SW CORNER SECTION 11
 FOUND 2.5" BRASS CAP
 STAMPED COUNTY SURVEYORS
 OFFICE DATED 1958
 BT REFERENCES:
 1) 19" FIR WITH HEALED FACE
 AND TAG DATED 2/08
 N 28° E - 44.9'
 2) 16" FIR STUMP 10" TALL HEALED FACE
 AND TAG DATED 2/08
 S 85° E - 33.3'
 3) 23" FIR WITH HEALED FACE
 AND TAG DATED 5/80
 S 25° W - 25.7'
 4) 25" CEDAR WITH HEALED FACE
 AND TAG DATED 5/80
 N 36-1/2° W - 13.3'

(141463) SOUTH 1/4 CORNER SECTION 11
 FOUND 3.25" BRASS CAP
 STAMPED BLM DATED 1980
 BT REFERENCES:
 NOTE - NO BEARING TREES FOUND
 BT'S HAVE FALLEN OVER OR LOGGED.
 1) SET NEW BT
 51" FIR WITH BLAZED FACE
 AND SET TAG DATED 5/14/14
 N 11° W - 30.35' TO NAIL SIDE CENTER
 NO TREES AVAILABLE IN SECTION 14.

LEGEND

- SET 5/8" X 24" REBAR WITH 1 1/4" YELLOW PLASTIC CAP (KLEIN & ASSOC. LS 59002)
- ⊗ SET 5/8" X 24" REBAR WITH 1 1/4" YELLOW PLASTIC CAP (DYER PARTNER LS 2340)
- ⊙ FOUND MONUMENT AS NOTED (SEE CORNER NOTES)
- COMPUTED POINT, NOT MONUMENTED
- ⊠ FOUND QUARTER CORNER SEE CORNER NOTES
- ⊞ FOUND SECTION CORNER SEE CORNER NOTES
- ⊡ COMPUTED QUARTER CORNER
- ⊠ COMPUTED SECTION CORNER
- POINT NUMBER
- PROPOSED ALIGNMENT
- - - - - TEMPORARY CONSTRUCTION EASEMENT
- - - - - TEMPORARY WORK AREA



AREA SECTION 11

TEMPORARY CONSTRUCTION EASEMENT	5.27 AC
TEMPORARY WORK AREA	1.21 AC

LINE TABLE

Line #	Direction	Length
L18	N40°07'51"E	70.71
L19	N85°07'51"E	125.00
L20	N41°25'06"E	129.94
L21	N86°25'06"E	70.71
L22	N88°50'31"E	43.33
L23	N82°52'30"E	22.93
L24	N82°52'30"E	15.37
L25	N88°36'10"E	27.84
L26	N59°54'22"E	402.10
L27	S87°55'13"E	166.29
L28	N10°56'28"E	31.76
L29	S88°35'45"E	12.08
L30	N2°40'59"E	43.60

REGISTERED
 PROFESSIONAL
 LAND SURVEYOR
 MICHAEL W. ERICKSON
 2340
 Expires 8-31-2015

REGISTERED
 PROFESSIONAL
 LAND SURVEYOR
 JAMES M. KLEIN
 59002
 Expires 8-30-2015

D THE DYER PARTNERSHIP
 ENGINEERS & PLANNERS, INC.
 1330 Teakwood Avenue / Coos Bay, Oregon 97420
 (541) 269-0732 / WWW.DYERPART.COM

KA
 Klein & Associates, Inc.
 ENGINEERING • SURVEYING • PLANNING
 1411 13th Street • Hood River, OR 97031
 TEL: 541-386-3322 • FAX: 541-386-2515

PACIFIC CONNECTOR GAS PIPELINE PROJECT
 PACIFIC CONNECTOR GAS PIPELINE, LP
 SECTION 11
 RECORD OF SURVEY
 TOWNSHIP 29 SOUTH, RANGE 8 WEST, W.M.
 DOUGLAS COUNTY, OREGON

Pacific Connector
 GAS PIPELINE

DRAWN BY: GJD	DATE: 11-11-2014	ISSUED FOR BID:	SCALE: 1" = 200'
CHECKED BY:	DATE:	ISSUED FOR CONSTRUCTION:	
APPROVED BY:	DATE:	DRAWING NUMBER:	SHEET 4 OF 4