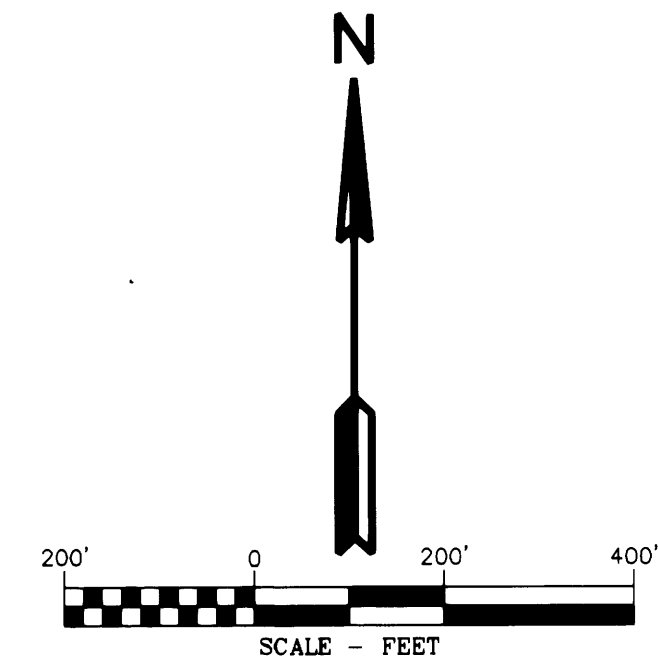
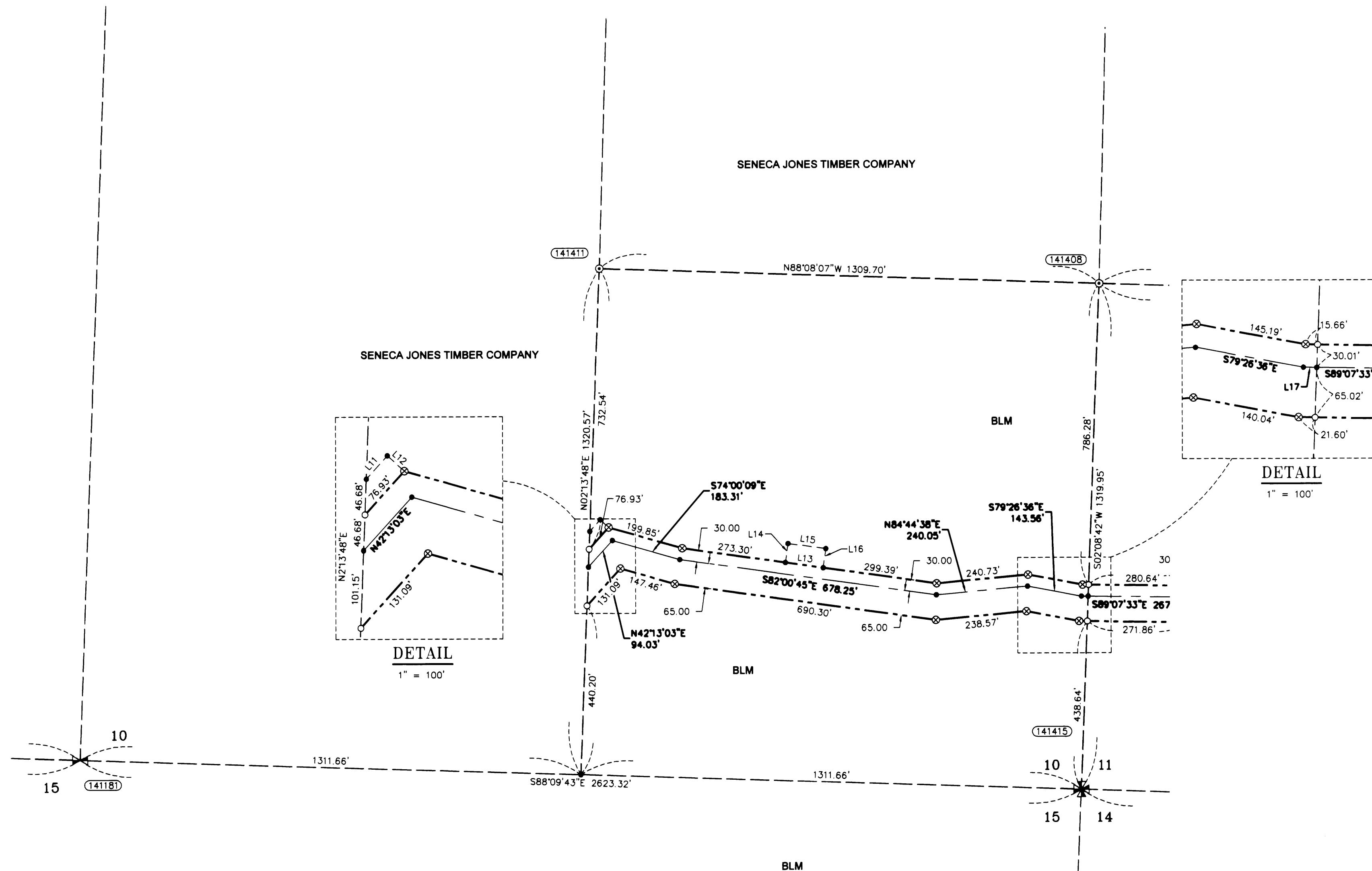


RECORD OF SURVEY

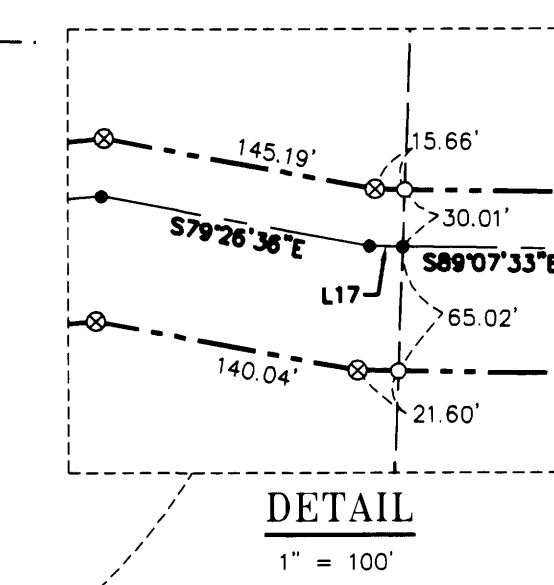
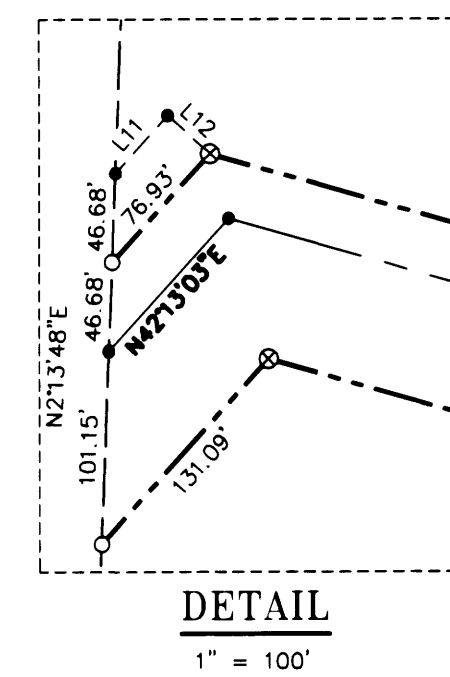
LOCATED IN
 THE SE 1/4 OF SECTION 10
 TOWNSHIP 29 SOUTH, RANGE 8 WEST, W.M.
 DOUGLAS COUNTY, OREGON
 REVISED BY M166-41 C

FILED
 Date: 12/11/2014 By: J.C.
 This survey consists of:
 Map: M166-24 A-D
 Narrative: REVISED BY M166-41 A-D
 Corner Rpt:
 DOUGLAS COUNTY
 SURVEYOR



AREA SECTION 10

TEMPORARY CONSTRUCTION EASEMENT	2.97 AC.
TEMPORARY WORK AREA	0.15 AC.



LINE TABLE

Line #	Direction	Length
L11	N42°13'03\"/>	
L12	S47°56'28\"/>	
L13	S82°00'44\"/>	
L14	N7°54'14\"/>	
L15	S82°05'46\"/>	
L16	S7°54'14\"/>	
L17	S89°07'33\"/>	

CORNER NOTES:

- (14118) SOUTH 1/4 CORNER SECTION 10
 FOUND 3.25\"/>

(14141) SE 1/16 CORNER SECTION 10
 FOUND 3.25\"/>

(141415) SE CORNER SECTION 10
 FOUND 2.5\"/>

(141408) SOUTH 1/16 CORNER SECTIONS 10/11
 FOUND 3.25\"/>

LEGEND

- SET 5/8\"/>
- ⊗ SET 5/8\"/>
- FOUND MONUMENT AS NOTED (SEE CORNER NOTES)
- ⊙ COMPUTED POINT, NOT MONUMENTED
- ⊗ FOUND QUARTER CORNER
SEE CORNER NOTES
- ⊗ FOUND SECTION CORNER
SEE CORNER NOTES
- ⊗ COMPUTED QUARTER CORNER
- ⊗ COMPUTED SECTION CORNER
- ① POINT NUMBER
- PROPOSED ALIGNMENT
- - - TEMPORARY CONSTRUCTION EASEMENT
- - - - - TEMPORARY WORK AREA

REGISTERED PROFESSIONAL LAND SURVEYOR
 MICHAEL W. ERICKSON
 2340
 Expires 12-31-2015

REGISTERED PROFESSIONAL LAND SURVEYOR
 JAMES M. KLEIN
 59002
 Expires 6-30-2015

D THE DYER PARTNERSHIP ENGINEERS & PLANNERS, INC.
 1330 Teakwood Avenue / Coos Bay, Oregon 97420
 (541) 269-0732 / WWW.DYERPART.COM

KA Klein & Associates, Inc.
 ENGINEERING • SURVEYING • PLANNING
 1411 13th Street - Hood River, OR 97031
 TEL: 541-386-3322 • FAX: 541-386-2515

PACIFIC CONNECTOR GAS PIPELINE PROJECT
 PACIFIC CONNECTOR GAS PIPELINE, LP
 SECTION 10
 RECORD OF SURVEY
 TOWNSHIP 29 SOUTH, RANGE 8 WEST, W.M.
 DOUGLAS COUNTY, OREGON

Pacific Connector GAS PIPELINE

DRAWN BY: GJD	DATE: 11-11-2014	ISSUED FOR BID:	SCALE: 1" = 200'
CHECKED BY:	DATE:	ISSUED FOR CONSTRUCTION:	
APPROVED BY:	DATE:	DRAWING NUMBER:	SHEET 3 OF 4